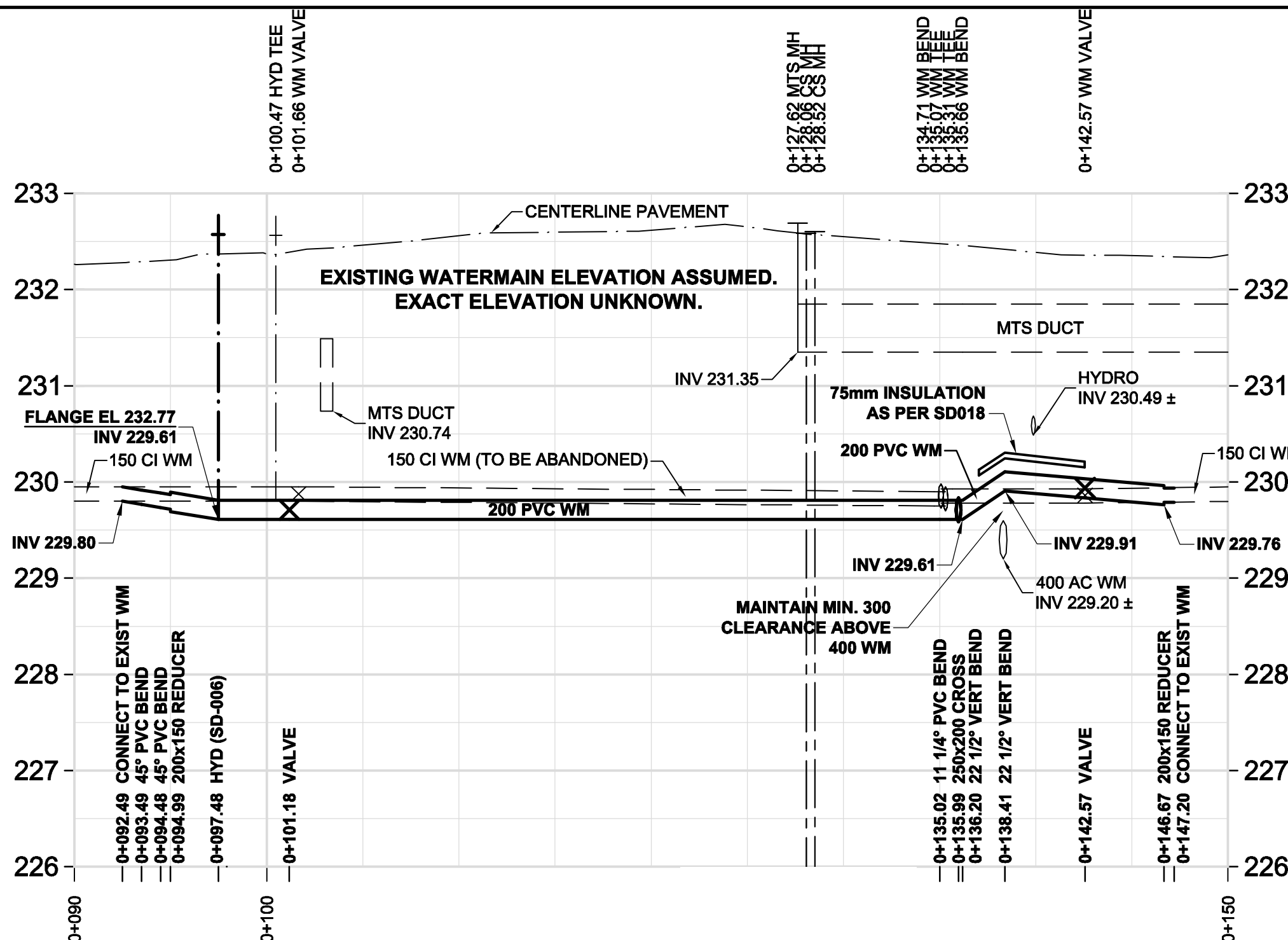


D SIZE 22" x 34" (559mm x 864mm)

PLOT: 11/04/07 12:42:47 PM

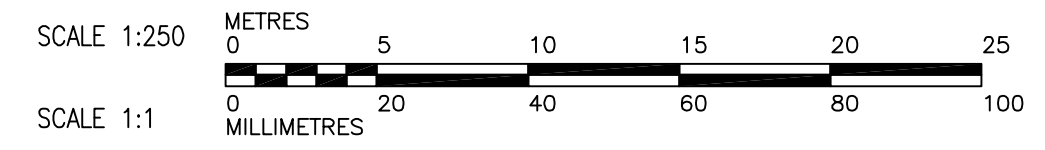
AECOM REVIEW DRFT CHK



ADDRESS	NATURE OF SERVICE	SIZE	MATERIAL	DISTANCE SC TO PROPERTY	POSITION OF SC (curb stop)	POSITION OF CC (corp)	COMMENTS:
937	PORTAGE AVE	1/2 in (13 mm)	LEAD	(0.6 m)	Long: (8.8 m) N of NL STORE Short: (0.3 m) S of NL STORE	Long: (0.3 m) S of SL PORTAGE	
938	PORTAGE AVE	3/4 in (19 mm)	COPPER	(1.2 m)	Long: (10.4 m) W of WL RUBY Short: SAME AS LONG MEAS.	Long: (1.5 m) S of SL PORTAGE	
940/942	PORTAGE AVE	3/4 in (19 mm)	COPPER	(1.2 m)	Long: (16.8 m) W of WL RUBY Short: SAME AS LONG MEAS.	Long: (1.5 m) S of SL PORTAGE	
944/946	PORTAGE AVE	3/4 in (19 mm)	COPPER	(1.5 m)	Long: (27.4 m) W of WL RUBY Short: (5.2 m) E of WL BUILDING	Long: (1.5 m) S of SL PORTAGE	

WARNING
 IF POWER EQUIPMENT OR EXPLOSIVES ARE TO BE USED FOR EXCAVATION ON THIS PROJECT, THE CONTRACTOR MUST NOTIFY THE GAS COMPANY OF THE PROPOSED LOCATION OF EXCAVATION. TAKE PRECAUTION TO AVOID DAMAGE TO GAS COMPANY INSTALLATIONS. SEE PROVINCIAL REGULATION 140/92 FOR DETAILS

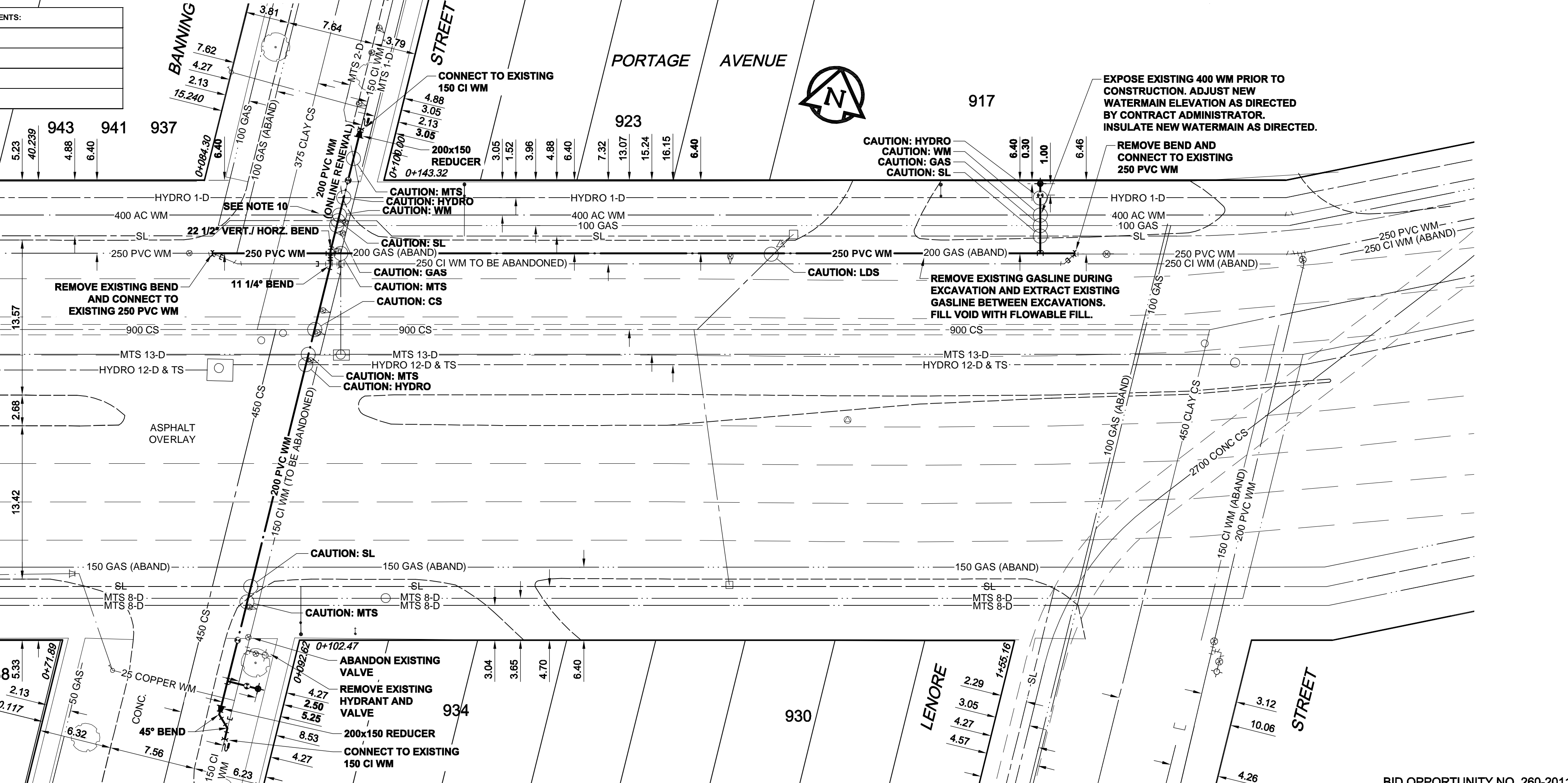
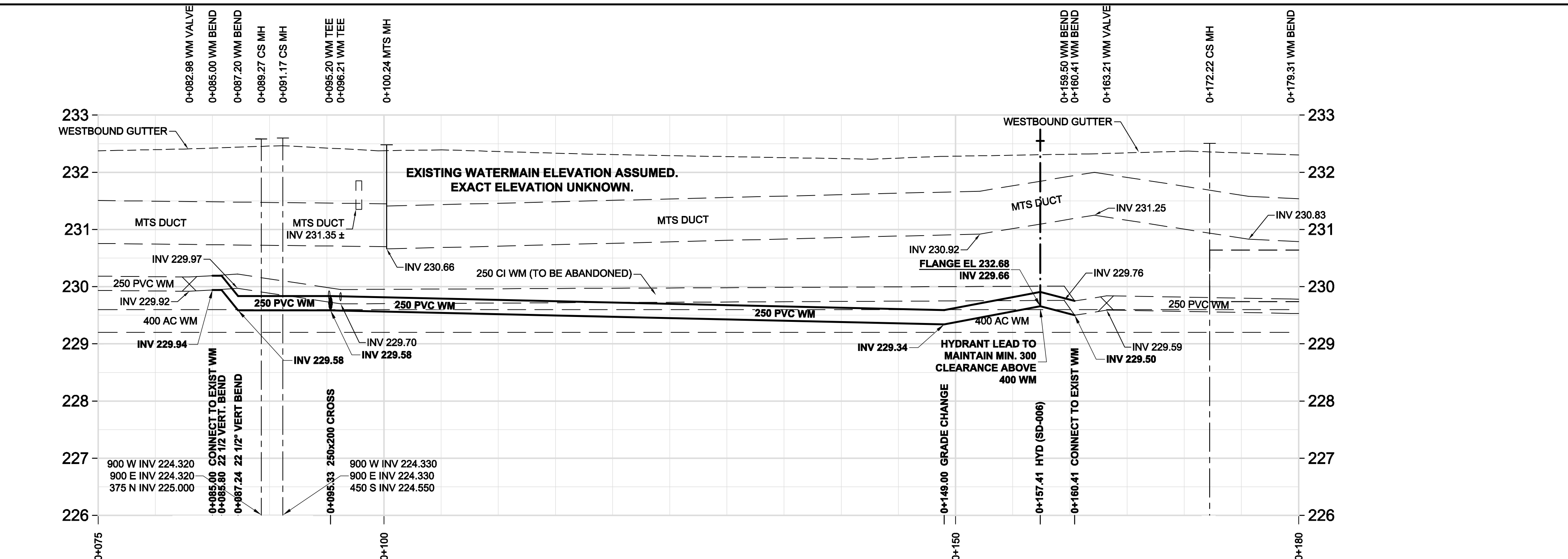
- CONSTRUCTION NOTES:**
1. EXPOSE WATERMAIN CONNECTIONS AND CONFIRM INVERTS PRIOR TO CONSTRUCTION
 2. INSTALL WATERMAIN BY TRENCHLESS METHODS.
 3. ALL MATERIALS SHALL CONFORM TO THE CITY OF WINNIPEG STANDARD CONSTRUCTION SPECIFICATIONS.
 4. MINIMUM COVER TO TOP OF PROPOSED WATERMAIN SHALL BE 2.5m FROM STREET CENTERLINE.
 5. INSTALL ALL HYDRANTS WITH FLANGE ELEVATION 50mm TO 150mm ABOVE FINISHED GRADE.
 6. REPLACE ALL EXISTING LEAD SERVICES FROM THE PROPOSED WATERMAIN TO PROPERTY LINE.
 7. NOTIFY ALL AFFECTED RESIDENTS AND BUSINESSES 24 HOURS IN ADVANCE OF ANY WATER SHUTDOWN OR DISRUPTION OF SERVICE.
 8. LOCATION OF WATER SERVICES SHOWN ON DRAWINGS ARE APPROXIMATE. THE CONTRACTOR SHALL FIELD LOCATE ALL WATER SERVICES PRIOR TO CONSTRUCTION.
 9. BACKFILL UNDER OR WITHIN 1.0m OF PAVEMENTS, INCLUDING SIDEWALKS SHALL BE CLASS 3 BACKFILL EXCEPT AS NOTED. BACKFILL IN BOULEVARDS SHALL BE CLASS 5 BACKFILL.
 10. EXPOSE EXISTING 400 WM PRIOR TO CONSTRUCTION. ADJUST NEW WATERMAIN ELEVATION AS DIRECTED BY CONTRACT ADMINISTRATOR. INSULATE NEW WATERMAIN AS DIRECTED.



METRIC
 WHOLE NUMBERS INDICATE MILLIMETRES
 DECIMALIZED NUMBERS INDICATE METRES

AECOM
 Certificate of Authorization
 AECOM Canada Ltd.
 No. 4671 Date: APRIL 7, 2011

EXISTING	LEGEND - PLAN	NEW	EXISTING	LEGEND - PLAN	NEW	EXISTING	LEGEND - PROFILE	NEW
150 WM	WATERMAIN	150 WM	○	CURB STOP	⬮	150 WM	WATERMAIN	150 WM
300 LDS	HYDRANT VALVE	300 LDS	⊕	REDUCER	⬮	300 LDS	HYDRANT VALVE	300 LDS
250 WWS	LAND DRAINAGE SEWER	250 WWS	⊕	COUPLER	⬮	250 WWS	LAND DRAINAGE SEWER	250 WWS
○	WASTE WATER SEWER	○	⊕	ANODE	⬮	○	WASTE WATER SEWER	○
○	MANHOLE	○	⊕	HYDRO	⬮	○	MANHOLE	○
○	CATCH BASIN	○	⊕	MTS	⬮	○	CATCH BASIN	○
○	CURB INLET	○	⊕	TESTHOLE	⬮	○	CURB INLET	○
○	CULVERT	○	⊕	LAMP STANDARD	⬮	○	CULVERT	○
○	PIPE ABANDONMENTS	○	⊕	TREE	⬮	○	PIPE ABANDONMENTS	○
○	SURVEY BAR	○	⊕			○	SURVEY BAR	○



LOCATION APPROVED UNDERGROUND STRUCTURES

SUPR. U/G STRUCTURES DATE COMMITTEE

NOTE: LOCATION OF UNDERGROUND STRUCTURES AS SHOWN ARE BASED ON THE BEST INFORMATION AVAILABLE. BUT NO GUARANTEE IS GIVEN THAT ALL EXISTING UTILITIES ARE SHOWN OR THAT THE GIVEN LOCATIONS ARE EXACT. CONFIRMATION OF EXISTENCE AND EXACT LOCATION OF ALL SERVICES MUST BE OBTAINED FROM THE INDIVIDUAL UTILITIES BEFORE PROCEEDING WITH CONSTRUCTION.

AECOM

DESIGNED BY: GSK
 CHECKED BY: FMI
 DRAWN BY: JP
 APPROVED BY: CCM

HOR. SCALE: 1:250
 VERT. SCALE: 1:50

ISSUED FOR TENDER: 11/04/06 GDL
 ISSUED FOR REVIEW: 11/03/22 JP
 NO. REVISIONS: YNMMDDI BY

RELEASED FOR CONSTRUCTION: KAS ZUREK
 DATE: 2011/04/07

PROFESSIONAL'S SEAL
 PROVINCE OF MANITOBA
 ORIGINAL SIGNED BY
K.W. FITCHETT
 REGISTERED PROFESSIONAL ENGINEER
 APRIL 7, 2011
 CONSULTANT DRAWING NO.
 60188096-01-C-106-ROX.dwg

THE CITY OF WINNIPEG
 WATER AND WASTE DEPARTMENT

2011 WATERMAIN RENEWALS CONTRACT 6

PORTAGE AVENUE / RUBY STREET
 60m EAST OF BANNING STREET TO BANNING STREET / SOUTH SIDE PORTAGE AVENUE TO NORTH SIDE PORTAGE AVENUE

SHEET 10 OF 10
 CITY DRAWING NUMBER
D-12345

BID OPPORTUNITY NO. 260-2011