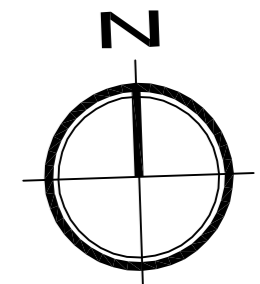
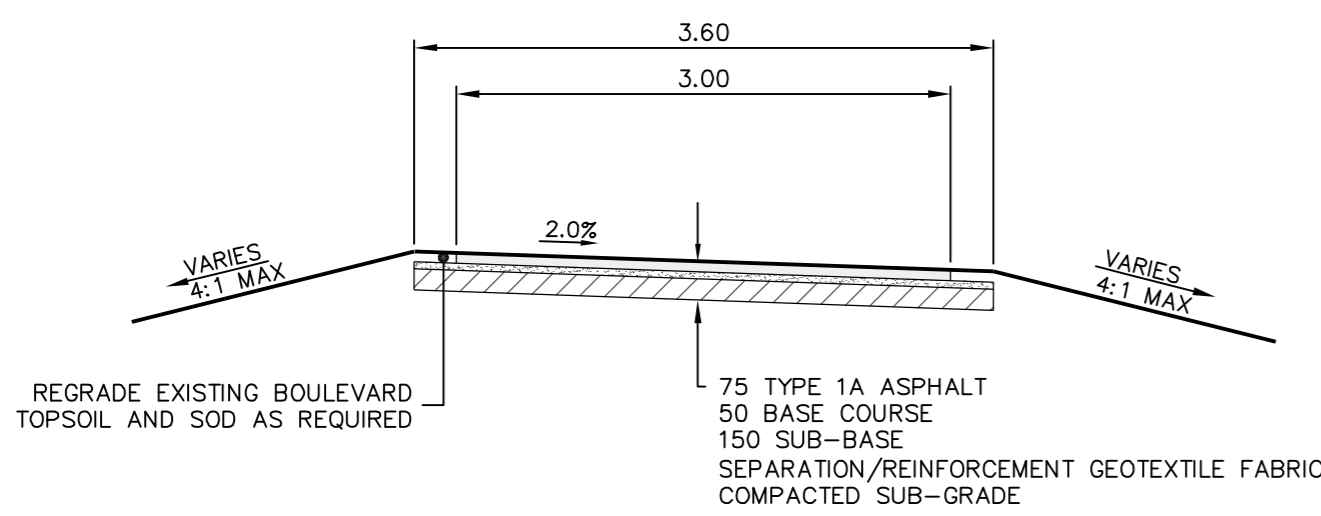


OMAND PARK MULTI-USE PATH



MATCHLINE - SEE DWG. 5509114-C-15 STA 3+25



TYPICAL CROSS SECTION
SCALE N.T.S.

NOTES:

- ALL WORK AND MATERIALS TO BE IN ACCORDANCE WITH THE LATEST REVISIONS OF THE CITY OF WINNIPEG STANDARD CONSTRUCTION SPECIFICATIONS.
- CONTRACTOR TO VERIFY DEPTH OF UTILITIES PRIOR TO CONSTRUCTION.
- LOCATION OF UNDERGROUND STRUCTURES AS SHOWN ARE BASED ON THE BEST INFORMATION AVAILABLE, BUT NO GUARANTEE IS GIVEN THAT ALL EXISTING UTILITIES ARE SHOWN OR THAT THE GIVEN LOCATIONS ARE EXACT. CONFIRMATION OF EXISTENCE AND EXACT LOCATION OF ALL SERVICES MUST BE OBTAINED FROM THE INDIVIDUAL UTILITIES BEFORE PROCEEDING WITH CONSTRUCTION.
- EXCAVATED MATERIAL TO BE USED AS BACKFILL WHERE REQUIRED.
- ALL SURFACES TO BE MAINTAINED OR RESTORED TO PREVIOUS CONDITION OR BETTER.
- THE LIGHTING WILL CONSIST OF 100W HPS POST TOP LUMINAIRES INSTALLED ADJACENT TO THE PATHWAY. ALL LIGHTING TO BE CONTROLLED VIA AN OUTDOOR DISTRIBUTION CABINET C/W PHOTOCELL.
- POST TOP LUMINAIRES TO BE VANDAL-RESISTANT SDL LIGHTING: VP80-LR2-100S-120/240-H11-PC/8G. LUMINAIRES TO BE MOUNTED ON 15 FOOT STEEL POLES. POLES TO BE INSTALLED ON POURED CONCRETE BASES REFER TO SCD-652R. NOTE THAT BASE TO EXTEND 50mm ABOVE GRADE.
- ALL LUMINAIRE LOCATIONS TO BE CONFIRMED BY CONTRACT ADMINISTRATOR PRIOR TO COMMENCING WORK.
- THE CONTRACTOR SHALL INFORM THE CONTRACT ADMINISTRATOR AT LEAST FIVE DAYS IN ADVANCE OF POURING THE BASES TO ALLOW THE CONTRACT ADMINISTRATOR TO VERIFY LOCATIONS AND WITNESS PROCESSES. THE CONTRACTOR TO ALSO INFORM THE CONTRACT ADMINISTRATOR AT LEAST FIVE DAYS IN ADVANCE OF THE TRENCHING TO ALLOW THE CONTRACT ADMINISTRATOR TO WITNESS THE PROCESS.
- ALL DIMENSIONS IN METERS UNLESS INDICATED OTHERWISE.
- TRENCHING
 - CONTRACTOR TO PROVIDE TRENCHING REQUIRED TO POWER ALL LUMINAIRES. DEPTH TO BE MINIMUM 600mm AS PER ELECTRICAL CODE. WIRING TO BE DIRECT-BURY RWJ, PROVIDE MINIMUM 150mm SAND ABOVE AND BELOW WIRING. MAINTAIN ACCURATE LOCATIONS OF TRENCHING FOR INCLUSION ON AS-BUILT DRAWINGS.
 - CONTRACTOR TO COORDINATE TRENCHING WITH CONTRACT ADMINISTRATOR AND OTHER ON SITE CONTRACTORS COMPLETING LANDSCAPE WORK.
 - CONTRACTOR TO PROVIDE SOIL COMPACTION TO 95% PROCTOR DENSITY. RE-SOD AS REQUIRED IN ACCORDANCE WITH THE CITY OF WINNIPEG STANDARD CONSTRUCTION SPECIFICATIONS CW 3510 TO RETURN AREA TO ORIGINAL CONDITION.



METRIC
WHOLE NUMBERS INDICATE MILLIMETERS
DECIMALIZED NUMBERS INDICATE METERS

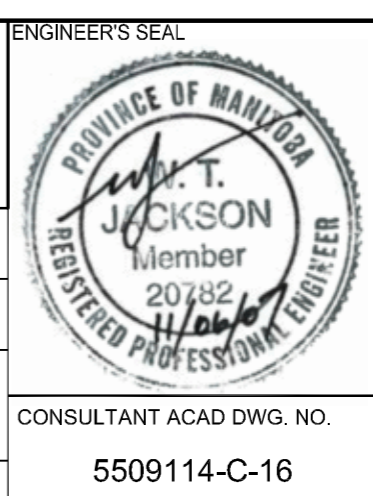
NOTE:
These design documents are prepared solely for the use by the party with whom the design professional has contracted for a specific and fixed fee. No representation of any kind made by the design professional to any party with whom the design professional has no contract fee is intended.

231.99	ELEVATION	(32.50)	◇	HYDRANT	---	EXISTING GROUND	---
○	WATER VALVE			150mm BARRIER CURB	---	PROPOSED CENTERLINE	---
□	MANHOLE			CONCRETE	---		---
	CATCH BASIN			ASPHALT	---		---
	MTS CABLE			LIGHT STANDARD	---		---
	LDS				---		---
	WWS				---		---
	WATER				---		---
	PROPERTY LINE				---		---
HP	HYDRO POLE				---		---
HP	HYDRO POLE WITH LIGHT				---		---
---	EXISTING			LEGEND-PLAN	---	EXISTING	---
---	PROPOSED			LEGEND-PLAN	---	PROPOSED	---
---	EXISTING			LEGEND-PROFILE	---	EXISTING	---
---	PROPOSED			LEGEND-PROFILE	---	PROPOSED	---

LOCATIONS APPROVED	
U	S
U	S
SIGNED BY:	DATE:
SUPV U/G STRUCTURES	DATE:

G.B.M. TBL IN 3.7m CONC PILE, 3.7m N OF S.L. OF PORTAGE AVE. & 3.4m E OF LINE OF W.L. OF KING EDWARD ST. ELEV. 235.437m			
NO.	REVISIONS	DATE	BY
5	ISSUED FOR TENDER	07.06.11	RP
4	350 GAS LINE ADDED	09.05.11	RP
3	FOR CITY REVIEW	05.05.11	RP
2	FOR CITY REVIEW - OPTION 2	03.05.11	RP
1	FOR REVIEW	27.04.11	WTJ

DESIGNED BY		CHECKED BY	
DRAWN BY		APPROVED BY	
HOR. SCALE 1:200		RELEASED FOR CONSTRUCTION	
VERTICAL 1:50		DATE	
RP			
TR		RP	
10.09.10			



MMM Group Limited
Suite 111 - 93 Lombard Ave
Winnipeg, MB R2B 3B1
T: 204.943.3719
F: 204.943.4548
www.mmm.ca

CITY OF WINNIPEG
PUBLIC WORKS DEPARTMENT
TRANSPORTATION ENGINEERING DIVISION

2010 ACTIVE TRANSPORTATION/
INFRASTRUCTURE STIMULUS PROGRAM
OMAND PARK UPGRADES

MULTI-USE PATH
STA. 3+25.00 TO 3+55.00

C-16
SHEET 3 OF 5

Jun 07 2011 - 2:46pm
P:\5509114-5509114-000 2010 Active Transportation Infrastructure Stimulus Program\MMM Drawings\Omand Park Upgrades\5509114 Omand Park C-14-18_030611.dwg - tab.C-16