

**SPECIFICATION**

**DELIVERY AND INSPECTION**

- SPRAY ALL PLANT MATERIAL WITH ANTI DESICCANT PRIOR TO TRANSPORT.
- KEEP ALL ROOTS AND ROOTBALLS MOIST PRIOR TO PLANTING.
- OBTAIN LANDSCAPE ARCHITECT'S APPROVAL ON ALL PLANT MATERIAL AT SOURCE OR UPON DELIVERY, PRIOR TO COMMENCEMENT OF PLANTING WORK.
- APPROVAL OF PLANT MATERIAL PRIOR TO PLANTING SHALL NOT IMPAIR THE RIGHT OF THE LANDSCAPE ARCHITECT TO REJECT PLANTS AFTER PLANTING, WHICH HAVE BEEN DAMAGED, OR WHICH IN ANY WAY DO NOT CONFORM TO THE SPECIFICATIONS.
- SUBSTITUTIONS OF SIZE, OR WITH OTHER PLANT MATERIAL WILL ONLY BE ALLOWED WITH THE WRITTEN APPROVAL OF THE CONSULTANT.
- ALL MATERIAL MUST CONFORM TO THE SIZES SHOWN ON THE PLANT LIST, EXCEPT WHERE LARGER PLANT MATERIAL IS USED WHEN APPROVED BY THE CONSULTANT. USE OF LARGER PLANTS WILL NOT INCREASE THE CONTRACT PRICE. UNDERSIZED MATERIAL WILL BE REJECTED.
- \*ALL SHRUBS AND TREES SHALL CONFORM TO THE PRESENT STANDARDS OF THE CANADIAN NURSERY TRADES ASSOCIATION FOR SIZE AND SPECIES.
- PLANTS ARE TO BE NURSERY GROWN UNDER PROPER CULTURAL CONDITIONS, IN PARTICULAR WITH RESPECT TO SPACING, PEST AND DISEASE CONTROL, AND BRANCH AND ROOT PRUNING.
- TREES ARE TO HAVE STRAIGHT STURDY TRUNKS.
- TREES SHALL BE WELL BRANCHED AND BALANCED WITH A STRONG CENTRAL LEADER.
- DECIDUOUS SHADE TREES SHALL BE FREE OF BRANCHES NOT LESS THAN 1.8M ABOVE THE GROUND.

**PREPARATION AND INSTALLATION**

- PREPARE PLANTING BEDS PRIOR TO ARRIVAL OF PLANT MATERIAL ON SITE. EXCAVATE PER PLANTING DETAILS.
- PLANTING SOIL TO BE A MIXTURE OF:
- 6 PARTS GOOD QUALITY TOPSOIL : 2 PARTS WELL ROTTED HORSE OR COW MANURE : 1 PART COMPOSTED
- 0.58 KILOS BONE MEAL PER CUBIC METRE OF SOIL PLANTING SOIL IS TO BE THOROUGHLY MIXED TO ELIMINATE AIR POCKETS AND PREVENT SETTLEMENT.

**NOTES**

- CONTRACTOR IS RESPONSIBLE FOR LOCATING ALL UTILITIES PRIOR TO CONSTRUCTION.
- CONTRACTOR IS RESPONSIBLE FOR ANY DAMAGE TO MARKED UTILITIES OR AS A RESULT OF NOT CONTRACTING THE APPROPRIATE UTILITIES.
- CONTRACTOR TO VERIFY ALL QUANTITIES PRIOR TO CONSTRUCTION, AND NOTIFY THE OWNER'S REPRESENTATIVE OF ANY DISCREPANCIES.
- CONTRACTOR IS RESPONSIBLE FOR ANY DAMAGE TO REMAINING LANDSCAPE AREAS, PAVEMENT, CONCRETE AREAS AND MUST MAKE ALL NECESSARY RESTORATIONS AND REPAIRS.
- CONTRACTOR IS RESPONSIBLE FOR HAULING OF ALL EXCESS OR UNSUITABLE MATERIALS OFF SITE AND PAY ALL COSTS AND FEES ASSOCIATED THEREWITH.
- CONTRACTOR IS RESPONSIBLE FOR GENERAL SITE CLEANUP.
- CONTRACTOR IS RESPONSIBLE FOR THE PROTECTION OF ALL EXISTING TREES WITHIN OR ADJACENT TO CONSTRUCTION AREAS.
- ALL QUANTITIES ARE APPROXIMATE ONLY.
- ALL MEASUREMENTS ARE IN METERS UNLESS OTHERWISE NOTED.
- CONTRACTOR SHALL MAINTAIN AND WARRANTY ALL LANDSCAPING FOR A PERIOD OF 1 (ONE) YEAR FROM CONSTRUCTION COMPLETION ACCEPTANCE.

**SEEDING**

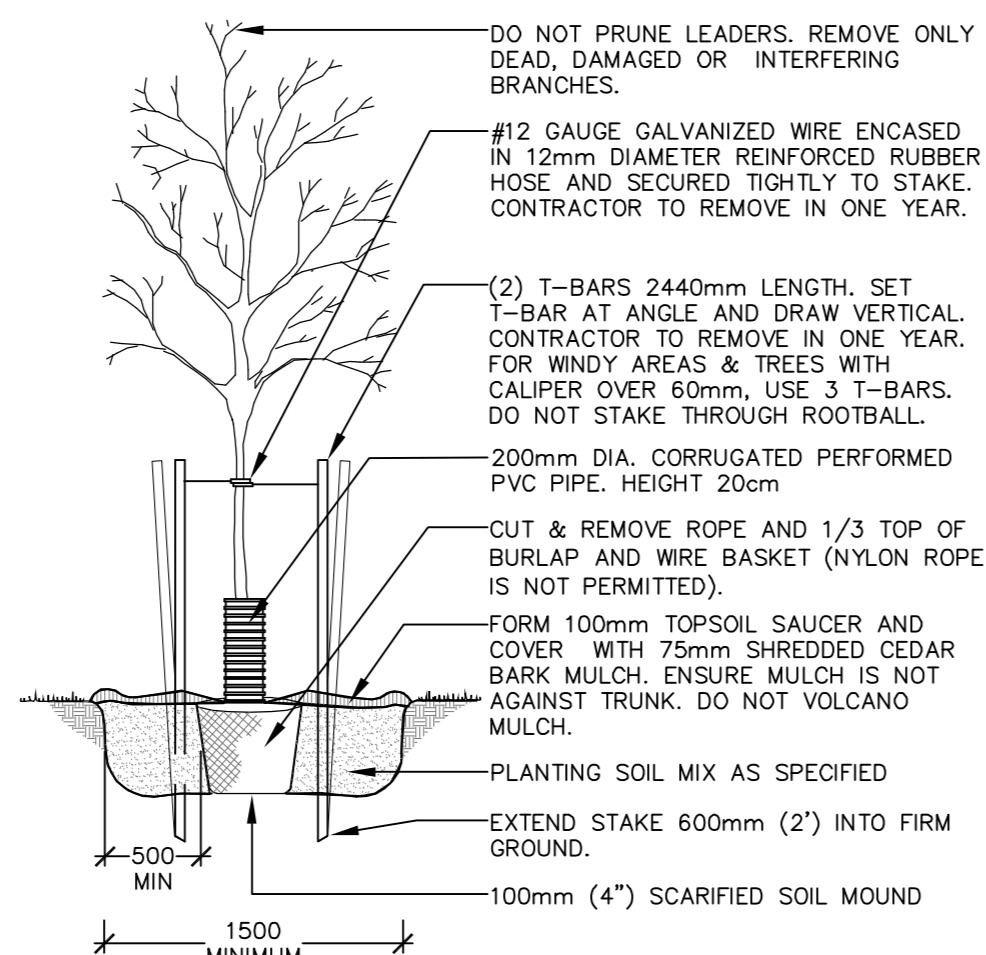
- RESTORE ALL DISTURBED AREAS WITH 150mm TOPSOIL AND SEED UNLESS SOD IS INDICATED ON PLAN.
- CONTRACTOR TO EXERCISE CAUTION WHEN SEEDING AROUND NEW PLANT MATERIAL. ALL PLANTS SHOWING EXCESSIVE OVERSPRAY OF HYDROSEED MATERIAL SHALL BE REPLACED AT CONTRACTOR'S EXPENSE.
- CONTRACTOR TO VERIFY SEEDING RATES RELATIVE TO SOIL TYPE PRIOR TO SEEDING.

**TOPSOIL**

- USE EVENLY MIXED TOPSOIL OF FERTILE, FRIABLE NATURAL LOAM CONTAINING NOT LESS THAN 4% ORGANIC
- MATTER FOR CLAY LOAM'S AND 2% MINIMUM ORGANIC MATTER FOR SANDY LOAM'S WITH AN ACIDITY RANGE OF 5.5 TO 7.5 pH, TO 150mm DEPTH IN ALL AREAS.
- ALL TOPSOIL SHALL BE STRIPPED WHERE NECESSARY AND STOCKPILED ON SITE. NO TOPSOIL SHALL BE REMOVED FROM SITE WITHOUT PRIOR WRITTEN CONSENT FROM THE TOWN.
- TOPSOIL SHALL NOT BE USED TO CONSTRUCT PERMANENT BERMS.
- NEW TOPSOIL SHALL CONFORM TO SPECIFICATIONS HEREIN.
- ALL TOPSOIL SHOULD BE FREE OF SUBSOILS, CLAY STONES, ROOTS, EXCESS WATER, FROST AND OTHER EXTRANEIOUS MATTER.

**UTILITIES**

- CONTRACTOR IS RESPONSIBLE FOR LOCATING ALL EXISTING UTILITIES ON THE SITE.
- CONTRACTOR MUST CHECK & VERIFY ALL DIMENSIONS AND CONDITIONS ON THE JOB, REPORTING ALL DISCREPANCIES TO THE LANDSCAPE ARCHITECT BEFORE PROCEEDING WITH THE WORK.
- CONTRACTOR IS RESPONSIBLE FOR ANY DAMAGE CAUSED TO EXISTING SERVICES WHEN EXCAVATING.



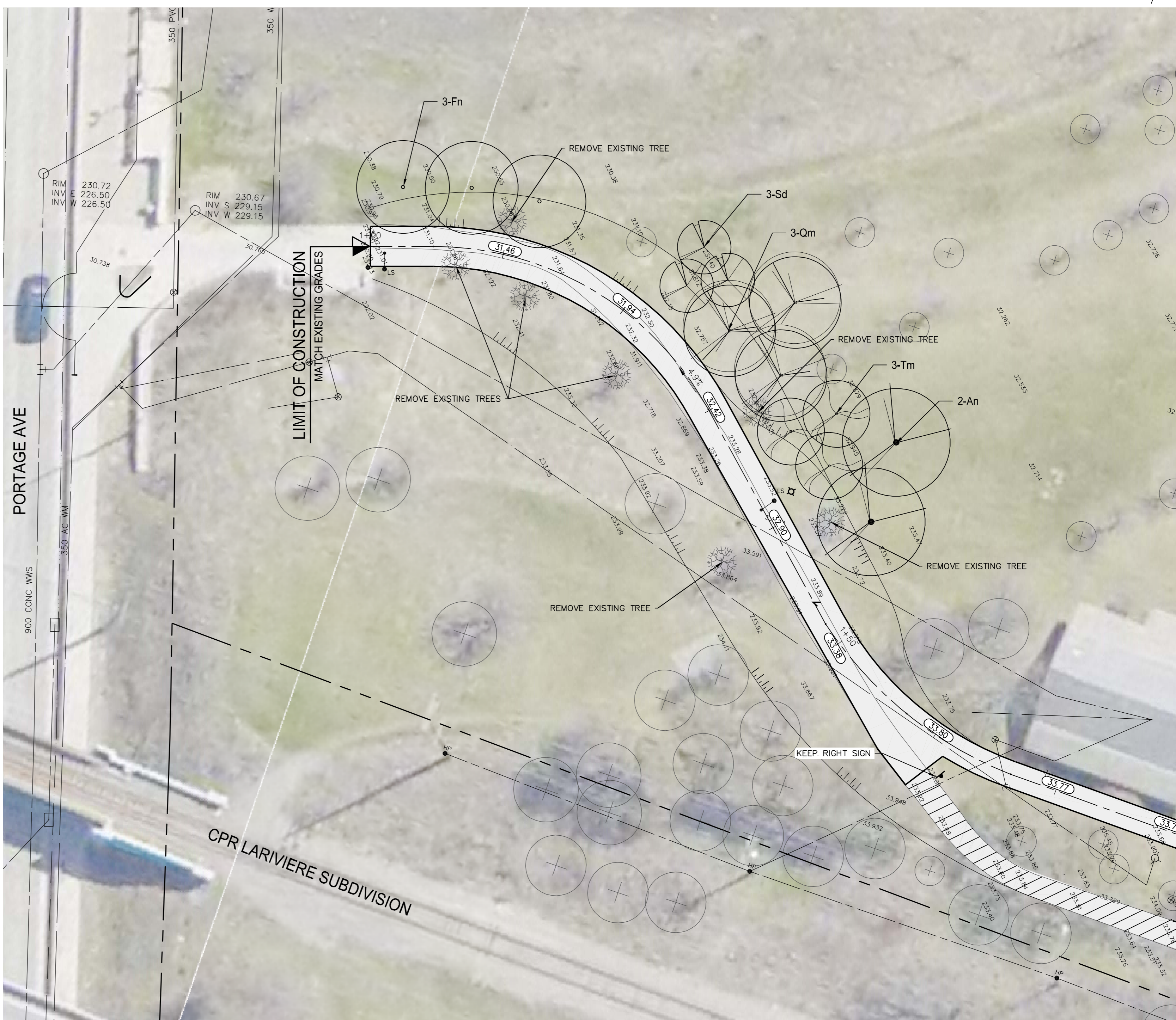
**NOTES**

- APPLY ANTI-DESSICANT PRIOR TO DELIVERY.
- PLANT TREE NO HIGHER THAN 50mm ABOVE ORIGINAL GROUND GRADE TO ALLOW FOR SETTLEMENT.
- WATER AT TIME OF PLANTING AND WHENEVER DEEMED NECESSARY TO MAINTAIN TREES IN A HEALTHY CONDITION.
- ALL TAGS AND LABELS TO REMAIN UNTIL INSPECTION IS COMPLETED.
- CONTRACTOR TO REMOVE ALL TAGS, LABELS AND STAKES AT THE END OF THE FIRST YEAR OF WARRANTY.



**PLANT LIST**

KEY	QTY.	BOTANICAL NAME	COMMON NAME	CAL.	COND.
<b>DECIDUOUS TREES</b>					
An	2	Acer negundo 'Baron'	Manitoba Maple 'Baron'	64mm (2.5 inch)	BB
Fn	3	Fraxinus nigra 'Fallgold'	Black Ash Fallgold	64mm (2.5 inch)	BB
Qm	3	Quercus macrocarpa	Bur Oak	50mm (2 inch)	BB
Sd	3	Sorbus decora	Showy Mountain Ash	45mm (1.75 inch)	BB
Tm	3	Tilia mongolica 'Harvest Gold'	Mongolian Linden 'Harvest Gold'	45mm (1.75 inch)	BB



MATCHLINE - SEE DWG. 5509114-C-15 STA 1+80

Jun 07, 2011 - 2:50pm  
P:\5509100-5509114-000 2010 Active Transportation Infrastructure Stimulus Program\MM Drawings\Omand Park Upgrades\5509114 Omand Park C-18\_3105114.dwg - Job: C-18

**FOR CIVIL INFORMATION SEE DRAWING C-14**



**METRIC**  
WHOLE NUMBERS INDICATE MILLIMETERS  
DECIMALIZED NUMBERS INDICATE METERS

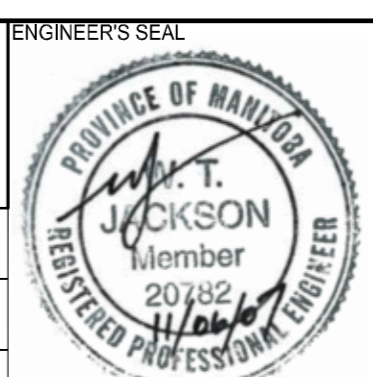
**CITY OF WINNIPEG**  
PUBLIC WORKS DEPARTMENT  
TRANSPORTATION ENGINEERING DIVISION

2010 ACTIVE TRANSPORTATION/  
INFRASTRUCTURE STIMULUS PROGRAM  
OMAND PARK UPGRADES

**MULTI-USE PATH**  
LANDSCAPE PLAN

**C-18**

SHEET 5 OF 5



CONSULTANT ACAD DWG. NO.  
5509114-C-18

DESIGNED BY	CHECKED BY
RP	-
DRAWN BY	APPROVED BY
JRC	RP
HOR. SCALE	RELEASED FOR CONSTRUCTION
1:200	DATE
VERTICAL	DATE
1:50	10.09.10

NO.	ISSUED FOR TENDER	DATE	BY
1	ISSUED FOR TENDER	07.06.11	RP
NO. REVISIONS	DATE	BY	DATE

231.99	ELEVATION	(32.50)	HYDRANT	EXISTING GROUND
	WATER VALVE		150mm BARRIER CURB	PROPOSED CENTERLINE
	MANHOLE		CONCRETE	
	CATCH BASIN		ASPHALT	
	MTS CABLE		LIGHT STANDARD	
	LDS			
	WWS			
	WATER			
	PROPERTY LINE			
	HYDRO POLE			
	HYDRO POLE WITH LIGHT			
EXISTING	LEGEND-PLAN	PROPOSED	EXISTING	LEGEND-PROFILE