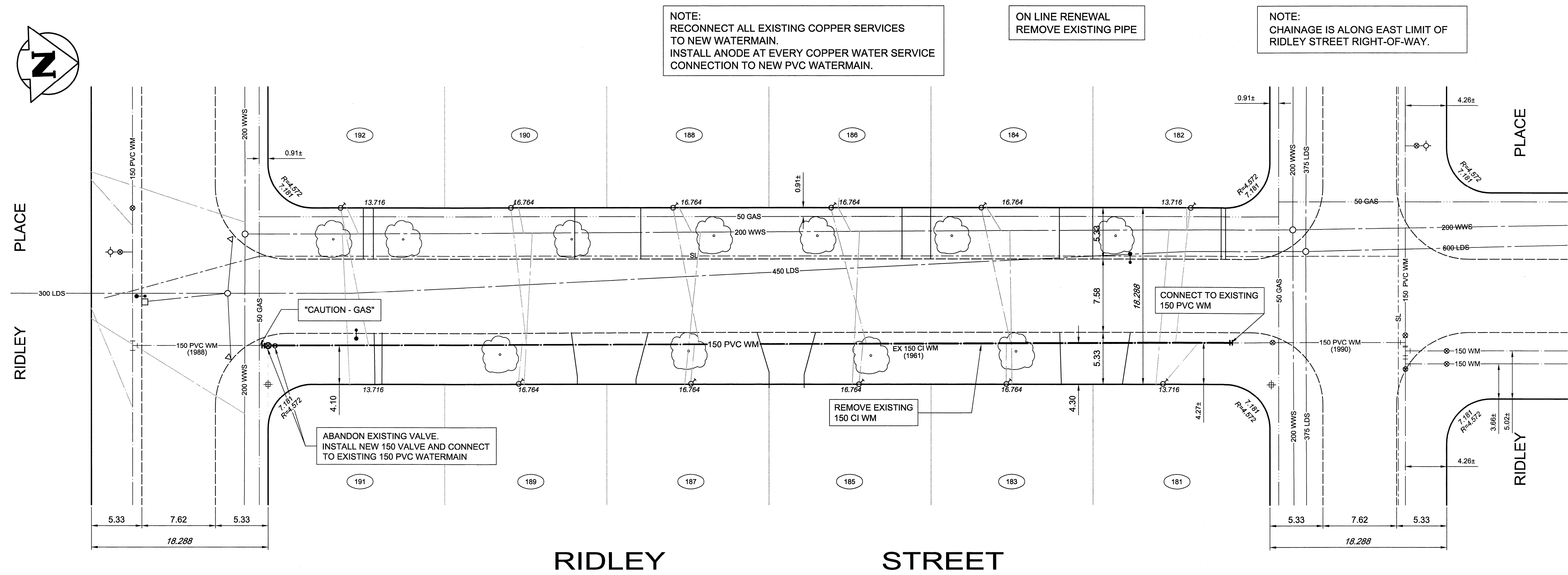
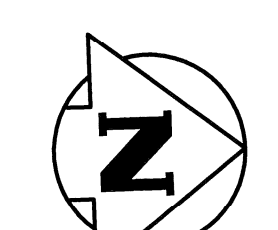


WATER CONNECTION DATA					
ADDRESS	SIZE & TYPE	DISTANCE TO PL	STOP COCK LOCATION SHORT / LONG	CORPORATION COCK LOCATION	COMMENTS
181 RIDLEY ST (RESIDENTIAL)	19 COPPER	-	7.4 S OF N SIDE BLDG	3.7 N OF SIC	
182 RIDLEY ST (RESIDENTIAL)	19 COPPER	-	6.7 N OF S SIDE BLDG	5.2 W OF SIC	
183 RIDLEY ST (RESIDENTIAL)	19 COPPER	-	5.5 S OF N SIDE BLDG	-	CORP 27.2 S VALVE COR RIDLEY ST & RIDLEY PL
184 RIDLEY ST (RESIDENTIAL)	19 COPPER	-	5.2 N OF S SIDE BLDG	-	CORP 26.8 S VALVE COR RIDLEY ST & RIDLEY PL
185 RIDLEY ST (RESIDENTIAL)	19 COPPER	-	5.5 S OF N SIDE BLDG	-	CORP 41.9 S VALVE COR RIDLEY ST & RIDLEY PL
186 RIDLEY ST (RESIDENTIAL)	19 COPPER	-	6.4 N OF S SIDE BLDG	-	CORP 41.8 S VALVE COR RIDLEY ST & RIDLEY PL
187 RIDLEY ST (RESIDENTIAL)	19 COPPER	-	5.1 S OF N SIDE BLDG	-	CORP 44.2 N OF NPL OF RIDLEY PL S LEG
188 RIDLEY ST (RESIDENTIAL)	19 COPPER	-	4.7 N OF S SIDE BLDG	-	CORP 44.5 N OF NPL OF RIDLEY PL S LEG
189 RIDLEY ST (RESIDENTIAL)	19 COPPER	-	5.4 SNL BLDG	-	CORP 26.5 N OF NPL OF RIDLEY PL S LEG
190 RIDLEY ST (RESIDENTIAL)	19 COPPER	-	5.2 N OF S SIDE BLDG	-	CORP 26.6 N OF NPL OF RIDLEY PL S LEG
191 RIDLEY ST (RESIDENTIAL)	19 COPPER	-	0.8 E OF W SIDE BLDG	25.2 E OF HYD	RIDLEY ST & RIDLEY PL
192 RIDLEY ST (RESIDENTIAL)	19 COPPER	-	3.0 N OF S SIDE BLDG	-	



NOTE:
RIDLEY STREET IS PART OF 2011 PAVEMENT RENEWAL PROJECT. FINAL SURFACE RESTORATION OF PAVEMENTS, BOULEVARDS, AND DRIVEWAYS EXCAVATED FOR WATERMAIN CONSTRUCTION IN THIS PORTION OF RIDLEY STREET WILL BE CARRIED OUT BY THE PAVEMENT RENEWAL CONTRACTOR.

- CONSTRUCTION NOTES**
1. WATERMAIN TO HAVE 2.5m COVER FROM CENTRELINE OF ROAD.
 2. ALL CURB REPLACEMENT TO MATCH EXISTING CURB.
 3. ALL EXISTING WATERMANS AT CONNECTION LOCATIONS ARE TO HAVE INVERTS VERIFIED PRIOR TO CONSTRUCTION.
 4. INSTALL ALL HYDRANTS WITH FLANGE ELEVATION FROM 50mm TO 150mm ABOVE FINISHED GRADE.
 5. SALVAGE ALL EXISTING HYDRANT ASSEMBLIES AND VALVES WHEN DIRECTED BY THE CONTRACT ADMINISTRATOR AND RETURN TO THE CITY YARD. ABANDON THE REMAINING VALVES (AND/OR VALVE BOXES) AND HYDRANT ASSEMBLIES.
 6. INSTALL WATERMAIN BY TRENCHLESS METHODS UNDER ALL PAVEMENTS, TREES, LIGHT STANDARDS, AND OTHER APPURTENANCES.
 7. LOCATION OF ALL SERVICES TO BE CONFIRMED IN FIELD.
 8. RENEW ALL LEAD WATER CONNECTIONS UP TO THE PROPERTY LINE WITH 19mm COPPER WATER CONNECTIONS UNLESS RENEWAL SIZE IS OTHERWISE NOTED.
 9. ALL VALVES SHALL TURN COUNTER CLOCKWISE TO CLOSE WITH RED OPERATING NUT.
 10. ALL BACKFILL UNDER AND WITHIN 1.0m OF PAVEMENT OR SIDEWALK SHALL BE CLASS 3.
 11. ALL BACKFILL UNDER BOULEVARD SHALL BE CLASS 5.
 12. ABANDON SERVICES NO LONGER IN USE WHERE DIRECTED BY CONTRACT ADMINISTRATOR.
 13. CONTRACTOR TO NOTIFY BUSINESSES AND RESIDENTS A MINIMUM OF 24 HOURS PRIOR TO ANY DISRUPTION TO WATER SERVICE.

- GENERAL NOTES**
1. STATION 1+00 = SOUTHEAST CORNER OF RIDLEY PLACE AND RIDLEY STREET.

EXISTING	LEGEND-PLAN	PROPOSED	EXISTING	LEGEND-PLAN	PROPOSED	EXISTING	LEGEND-PLAN	PROPOSED
150 WM	WATERMAIN	---	TEE	---	---	TREE	---	---
400 FM	FEEDERMAIN	---	CURB STOP	---	---	LEGAL DIMENSION	---	---
300 LDS	LAND DRAINAGE SEWER	---	PLUG	---	---	SURVEY BAR	---	---
250 WWS	WASTEWATER SEWER	---	MANHOLE	---	---	TRAFFIC SIGNAL	---	---
300 CS	COMBINED SEWER	---	CATCHBASIN	---	---	GAS	---	---
200 FCM	FORCEMAIN	---	CURB INLET	---	---	HYDRO	---	---
REDUCER	REDUCER	---	ZINC ANODE	---	---	ASPHALT	---	---
HYDRANT	HYDRANT	---	HYDRO POLE	---	---	CURB	---	---
VALVE	VALVE	---	LIGHT STANDARD	---	---	ADDRESS	---	---
BEND	BEND	---	ANCHOR	---	---	SIGN	---	---

LOCATION APPROVED UNDERGROUND STRUCTURES

SUPV. U/G STRUCTURES COMMITTEE DATE

NOTE:
LOCATION OF UNDERGROUND STRUCTURES AS SHOWN ARE BASED ON THE BEST INFORMATION AVAILABLE. BUT NO GUARANTEE IS GIVEN THAT ALL EXISTING UTILITIES ARE SHOWN OR THAT THE GIVEN LOCATIONS ARE EXACT. CONFIRMATION OF EXISTENCE AND EXACT LOCATION OF ALL SERVICES MUST BE OBTAINED FROM THE INDIVIDUAL UTILITIES BEFORE PROCEEDING WITH CONSTRUCTION.

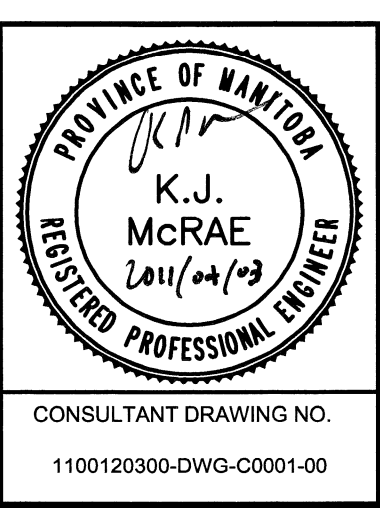
B.M. ELEV.	DATE	BY
04	ISSUED FOR TENDER	11.04.05
00	ISSUED FOR APPROVAL	11.04.03
NO	REVISIONS	

WARDROP PEOPLE. PASSION. PERFORMANCE. TRUSTED GLOBALLY.

DESIGNED BY: GWC
CHECKED BY: KJM
DRAWN BY: GMD
APPROVED BY: GS

HOR. SCALE: 1 : 250
VERTICAL: 1 : 50

RELEASED FOR CONSTRUCTION
DATE: 11.02.09



THE CITY OF WINNIPEG
WATER AND WASTE DEPARTMENT

2011 - WATERMAIN RENEWALS CONTRACT 3

CITY DRAWING NUMBER: D-12352
SHEET 1 OF 12

RIDLEY STREET
RIDLEY PLACE (SOUTH LEG) TO
RIDLEY PLACE (NORTH LEG)

C0001