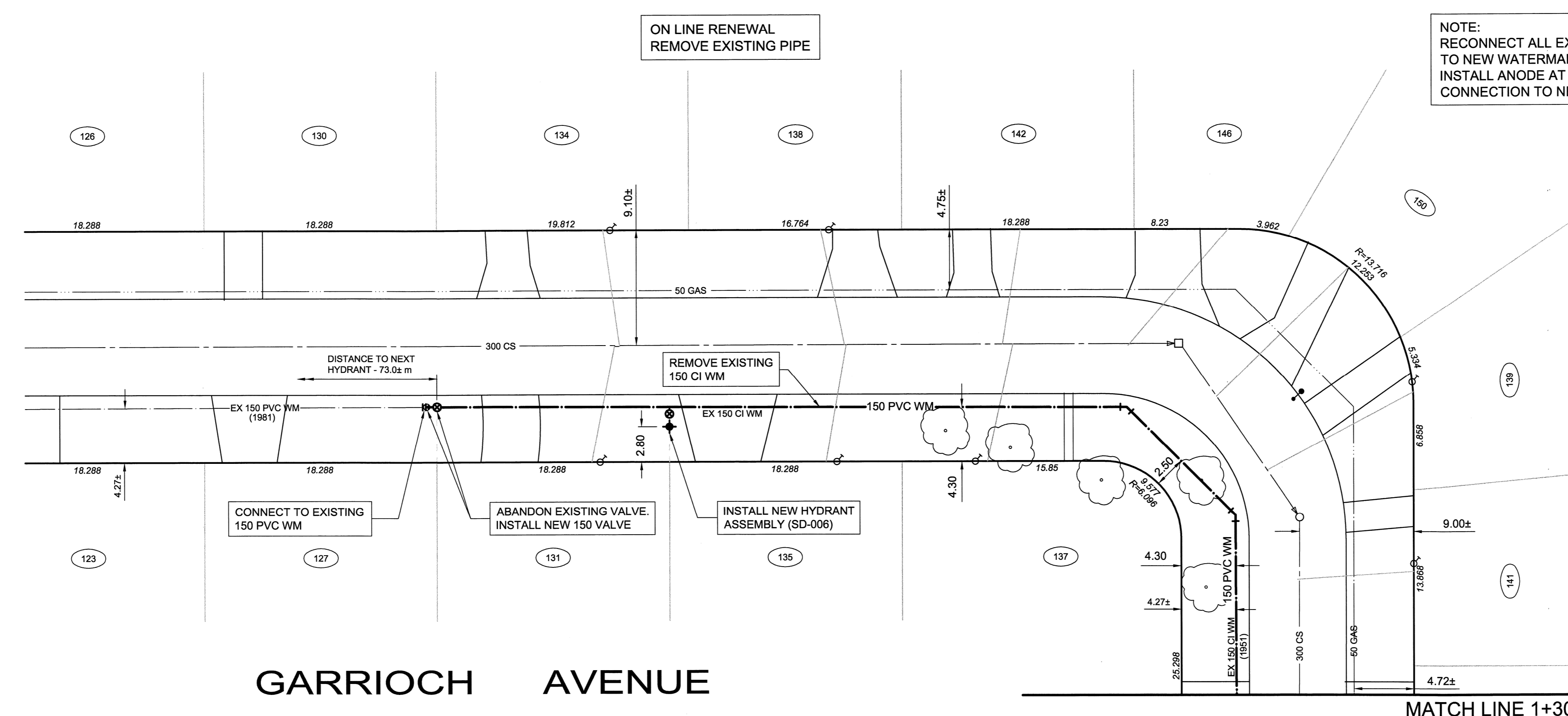
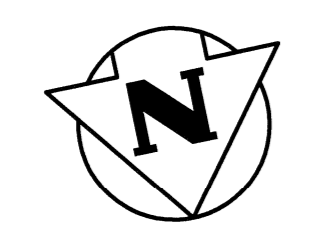


WATER CONNECTION DATA					
ADDRESS	SIZE & TYPE	DISTANCE TO PL	STOP COCK LOCATION		COMMENTS
			SHORT / LONG	CORPORATION COCK LOCATION	
123 GARRIOCH AVE (RESIDENTIAL)	19 COPPER	-	4.6 E OF W SIDE	49.8 W OF 1st HYD W OF MOUNT ROYAL	
126 GARRIOCH AVE (RESIDENTIAL)	19 COPPER	-	25.5 E OF W SIDE	49.4 W OF 1st HYD W OF MOUNT ROYAL	
127 GARRIOCH AVE (RESIDENTIAL)	19 COPPER	-	6.8 E OF W SIDE	67.4 W OF 1st HYD W OF MOUNT ROYAL	
130 GARRIOCH AVE (RESIDENTIAL)	19 COPPER	-	4.3 E OF W SIDE	68.0 W OF 1st HYD W OF MOUNT ROYAL	
131 GARRIOCH AVE (RESIDENTIAL)	19 COPPER	-	4.6 E OF W SIDE	87.2 W OF HYDRANT	
134 GARRIOCH AVE (RESIDENTIAL)	19 COPPER	-	4.1 E OF W SIDE	86.1 W OF HYDRANT	
135 GARRIOCH AVE (RESIDENTIAL)	19 COPPER	-	4.6 E OF W SIDE	105.8 W OF HYDRANT	
137 GARRIOCH AVE (RESIDENTIAL)	19 COPPER	-	2.3 E OF W SIDE	116.7 W OF HYDRANT	58.2 S VALVE
138 GARRIOCH AVE (RESIDENTIAL)	19 COPPER	-	3.8 EW SIDE BLDG	105.2 W OF HYDRANT	
139 GARRIOCH AVE (RESIDENTIAL)	19 COPPER	-	3.7 N OF S SIDE	37.8 S OF HYDRANT	
141 GARRIOCH AVE (RESIDENTIAL)	19 COPPER	-	2.7 N OF S SIDE	23.5 S OF HYDRANT	
142 GARRIOCH AVE (RESIDENTIAL)	19 COPPER	-	5.8 E OF W SIDE	120.4 W OF HYDRANT	
146 GARRIOCH AVE (RESIDENTIAL)	19 COPPER	-	8.2 E OF W SIDE	46.3 S OF HYDRANT	
150 GARRIOCH AVE (RESIDENTIAL)	19 COPPER	-	3.7 E/EHL	-	



NOTE: RECONNECT ALL EXISTING COPPER SERVICES TO NEW WATERMAIN. INSTALL ANODE AT EVERY COPPER WATER SERVICE CONNECTION TO NEW PVC WATERMAIN.

NOTE: CHAINAGE IS ALONG CENTRELINE OF GARRIOCH AVENUE RIGHT-OF-WAY.

NOTE: HOUSE NUMBERING NOT CONSISTENT THIS STREET

NOTE: GARRIOCH AVENUE IS PART OF 2011 PAVEMENT RENEWAL PROJECT. FINAL SURFACE RESTORATION OF PAVEMENTS, BOULEVARDS, AND DRIVEWAYS EXCAVATED FOR WATERMAIN CONSTRUCTION IN THIS PORTION OF GARRIOCH AVENUE WILL BE CARRIED OUT BY THE PAVEMENT RENEWAL CONTRACTOR.

- CONSTRUCTION NOTES**
1. WATERMAIN TO HAVE 2.5m COVER FROM CENTRELINE OF ROAD.
  2. ALL CURB REPLACEMENT TO MATCH EXISTING CURB.
  3. ALL EXISTING WATERMANS AT CONNECTION LOCATIONS ARE TO HAVE INVERTS VERIFIED PRIOR TO CONSTRUCTION.
  4. INSTALL ALL HYDRANTS WITH FLANGE ELEVATION FROM 50mm TO 150mm ABOVE FINISHED GRADE.
  5. SALVAGE ALL EXISTING HYDRANT ASSEMBLIES AND VALVES WHEN DIRECTED BY THE CONTRACT ADMINISTRATOR AND RETURN TO THE CITY YARD. ABANDON THE REMAINING VALVES (AND/OR VALVE BOXES) AND HYDRANT ASSEMBLIES.
  6. INSTALL WATERMAIN BY TRENCHLESS METHODS UNDER ALL PAVEMENTS, TREES, LIGHT STANDARDS, AND OTHER APPURTENANCES.
  7. LOCATION OF ALL SERVICES TO BE CONFIRMED IN FIELD.
  8. RENEW ALL LEAD WATER CONNECTIONS UP TO THE PROPERTY LINE WITH 19mm COPPER WATER CONNECTIONS UNLESS RENEWAL SIZE IS OTHERWISE NOTED.
  9. ALL VALVES SHALL TURN COUNTER CLOCKWISE TO CLOSE WITH RED OPERATING NUT.
  10. ALL BACKFILL UNDER AND WITHIN 1.0m OF PAVEMENT OR SIDEWALK SHALL BE CLASS 3.
  11. ALL BACKFILL UNDER BOULEVARD SHALL BE CLASS 5.
  12. ABANDON SERVICES NO LONGER IN USE WHERE DIRECTED BY CONTRACT ADMINISTRATOR.
  13. CONTRACTOR TO NOTIFY BUSINESSES AND RESIDENTS A MINIMUM OF 24 HOURS PRIOR TO ANY DISRUPTION TO WATER SERVICE.

- GENERAL NOTES**
1. STATION 1+00 = SOUTHEAST CORNER OF GARRIOCH AVENUE SOUTH AND WEST LEGS.

**APEGM**  
Certificate of Authorization  
**Wardrop Engineering Inc.**  
No. 195 Expiry: April 30, 2011

EXISTING	LEGEND-PLAN	PROPOSED	EXISTING	LEGEND-PLAN	PROPOSED	EXISTING	LEGEND-PLAN	PROPOSED
150 WM	WATERMAIN	150 WM	TEE	TEE	TEE	TREE	TREE	TREE
400 FM	FEEDERMAIN	400 FM	CURB STOP	CURB STOP	CURB STOP	LEGAL DIMENSION	LEGAL DIMENSION	LEGAL DIMENSION
300 LDS	LAND DRAINAGE SEWER	300 LDS	PLUG	PLUG	PLUG	SURVEY BAR	SURVEY BAR	SURVEY BAR
250 WWS	WASTEWATER SEWER	250 WWS	MANHOLE	MANHOLE	MANHOLE	TRAFFIC SIGNAL	TRAFFIC SIGNAL	TRAFFIC SIGNAL
300 CS	COMBINED SEWER	300 CS	CATCHBASIN	CATCHBASIN	CATCHBASIN	GAS	GAS	GAS
200 FCM	FORCEMAIN	200 FCM	CURB INLET	CURB INLET	CURB INLET	HYDRO	HYDRO	HYDRO
REDUCER	REDUCER	REDUCER	ZINC ANODE	ZINC ANODE	ZINC ANODE	ASPHALT	ASPHALT	ASPHALT
HYDRANT	HYDRANT	HYDRANT	CURB	CURB	CURB	CURB	CURB	CURB
VALVE	VALVE	VALVE	LIGHT STANDARD	LIGHT STANDARD	LIGHT STANDARD	ADDRESS	ADDRESS	ADDRESS
BEND	BEND	BEND	ANCHOR	ANCHOR	ANCHOR	SIGN	SIGN	SIGN

**LOCATION APPROVED UNDERGROUND STRUCTURES**

SUPV. U/G STRUCTURES COMMITTEE DATE

NOTE: LOCATION OF UNDERGROUND STRUCTURES AS SHOWN ARE BASED ON THE BEST INFORMATION AVAILABLE. BUT NO GUARANTEE IS GIVEN THAT ALL EXISTING UTILITIES ARE SHOWN OR THAT THE GIVEN LOCATIONS ARE EXACT. CONFIRMATION OF EXISTENCE AND EXACT LOCATION OF ALL SERVICES MUST BE OBTAINED FROM THE INDIVIDUAL UTILITIES BEFORE PROCEEDING WITH CONSTRUCTION.

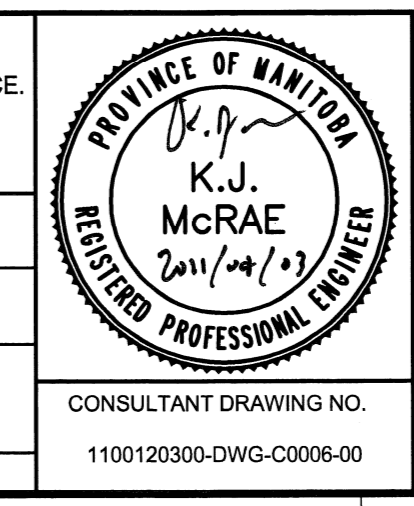
NO.	REVISIONS	DATE	BY
01	ISSUED FOR TENDER	11.04.09	JJA
00	ISSUED FOR APPROVAL	11.04.03	JJA

**WARDROP** PEOPLE, PASSION, PERFORMANCE. TRUSTED GLOBALLY

DESIGNED BY: GWC CHECKED BY: KJM  
DRAWN BY: GMD/NL APPROVED BY: GS

HOR. SCALE: 1 : 250  
VERTICAL: 1 : 50

DATE: 11.02.10



**THE CITY OF WINNIPEG**  
WATER AND WASTE DEPARTMENT

2011 - WATERMAIN RENEWALS  
CONTRACT 3  
GARRIOCH AVENUE (SOUTH LEG)

CITY DRAWING NUMBER: D-12357  
SHEET 6 OF 12  
C0006