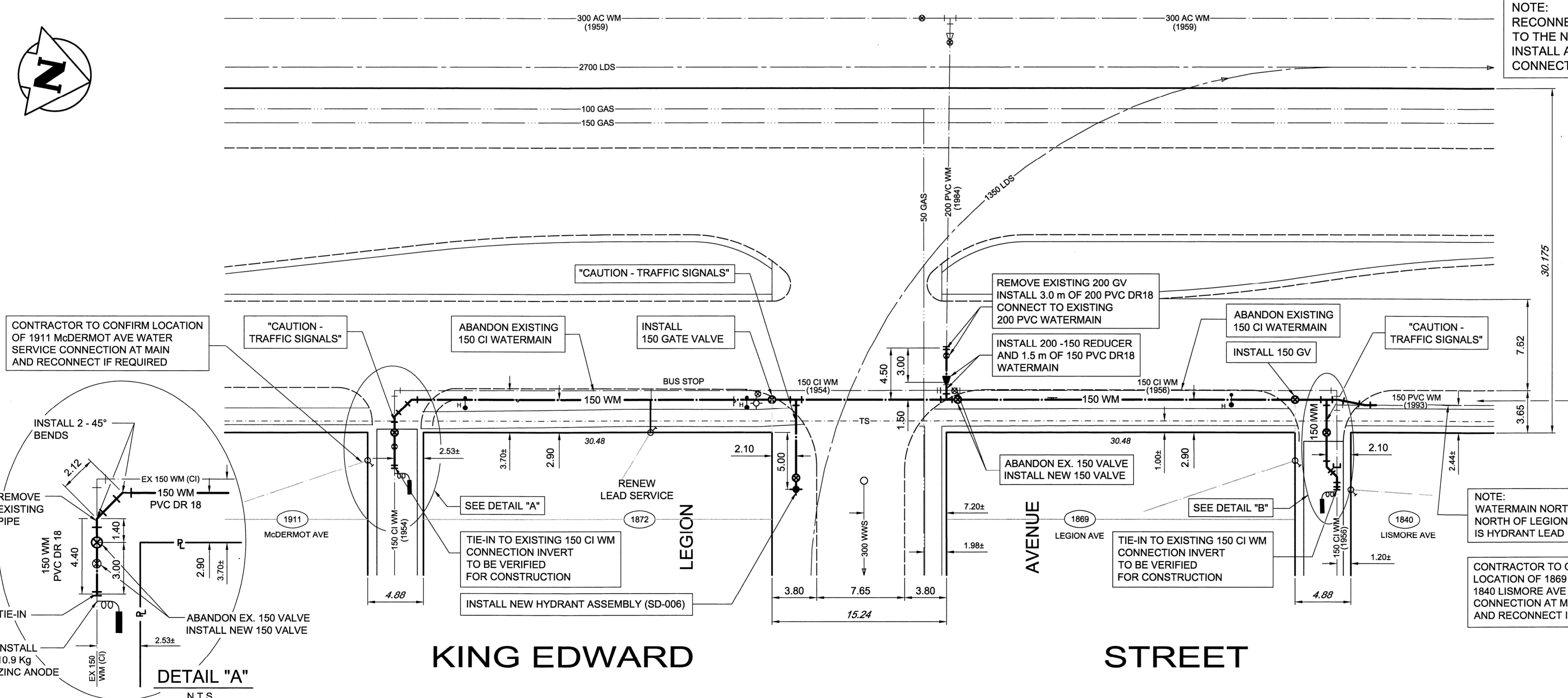


NOTE:  
CHAINAGE IS ALONG EAST LIMIT OF KING EDWARD STREET RIGHT-OF-WAY.

NOTE:  
KING EDWARD STREET IS PART OF 2011 PAVEMENT RENEWAL PROJECT. FINAL SURFACE RESTORATION OF PAVEMENTS, BOULEVARDS, AND SIDEWALKS EXCAVATED FOR WATERMAIN CONSTRUCTION IN THIS PORTION OF KING EDWARD STREET WILL BE CARRIED OUT BY THE PAVEMENT RENEWAL CONTRACTOR.

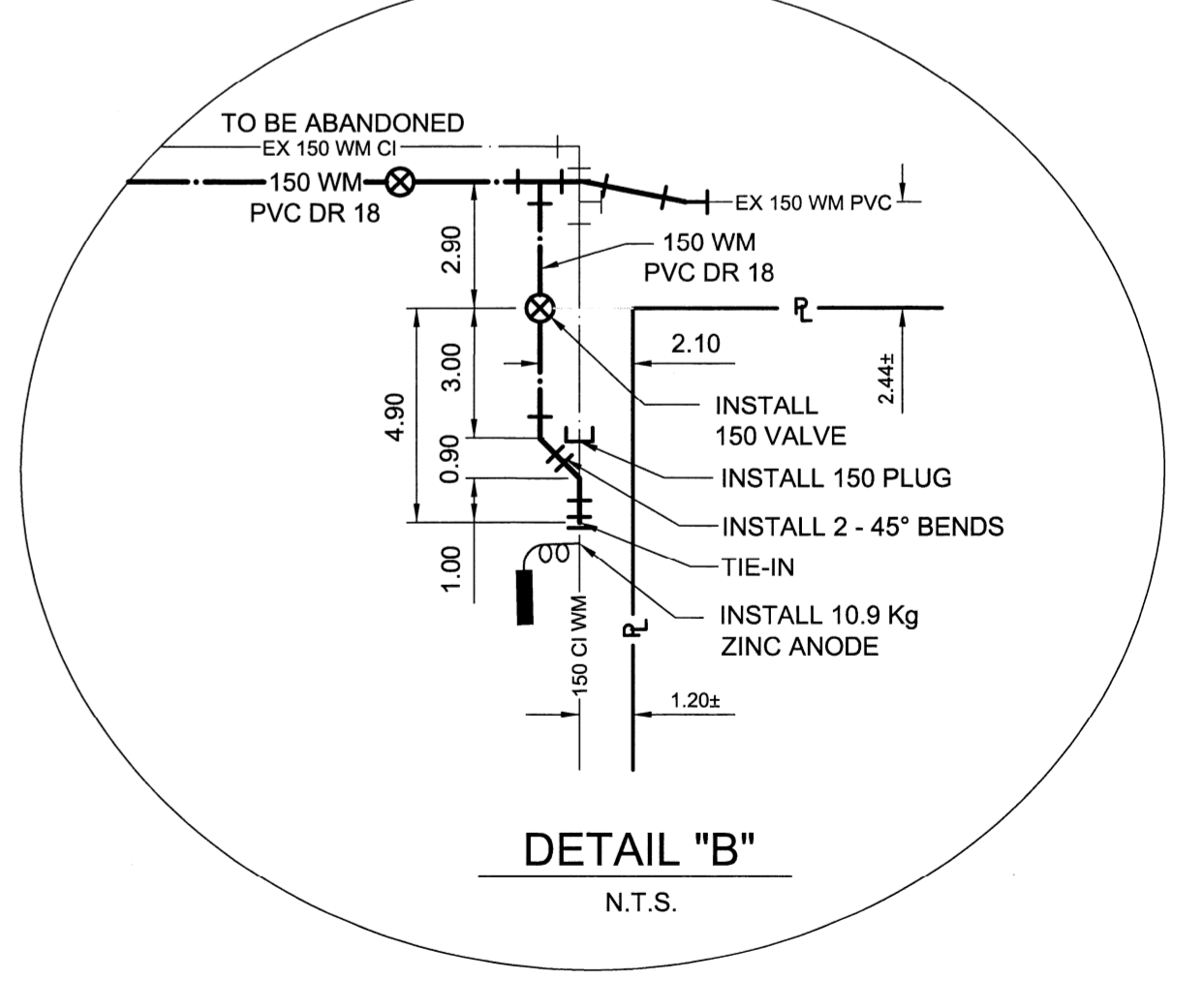
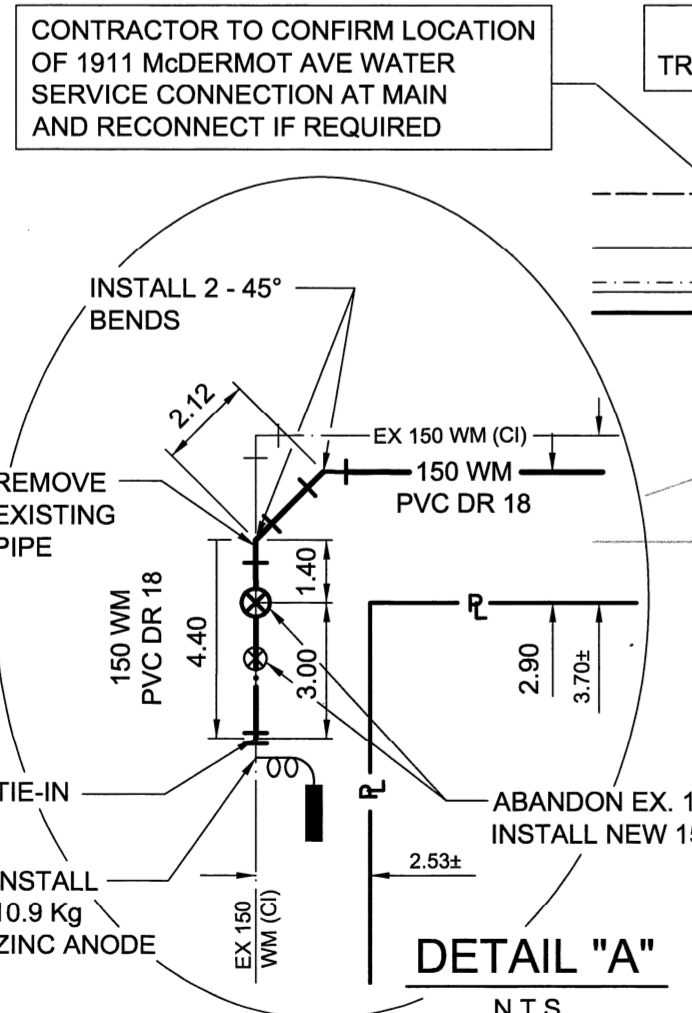
WATER CONNECTION DATA					
ADDRESS	SIZE & TYPE	DISTANCE TO PL	STOP COCK LOCATION SHORT / LONG	CORPORATION COCK LOCATION	COMMENTS
1840 LISMORE AVE (RESIDENTIAL)	-	-	-	-	STOP COCK 5.0 E OF E LINE KING EDWARD ST
1869 LEGION AVE (RESIDENTIAL)	19 COPPER	-	0.6 E OF W SIDE BLDG	-	-
1872 LEGION AVE (RESIDENTIAL)	13 LEAD	-	2.1 S OF N SIDE BLDG	-	RENEW SERVICE
1911 McDERMOT AVE (RESIDENTIAL)	-	-	-	-	STOP COCK 2.44 E OF E LINE KING EDWARD ST

- CONSTRUCTION NOTES**
- WATERMAIN TO HAVE 2.5m COVER FROM CENTRELINE OF ROAD.
  - ALL CURB REPLACEMENT TO MATCH EXISTING CURB.
  - ALL EXISTING WATERMANS AT CONNECTION LOCATIONS ARE TO HAVE INVERTS VERIFIED PRIOR TO CONSTRUCTION.
  - INSTALL ALL HYDRANTS WITH FLANGE ELEVATION FROM 50mm TO 150mm ABOVE FINISHED GRADE.
  - SALVAGE ALL EXISTING HYDRANT ASSEMBLIES AND VALVES WHEN DIRECTED BY THE CONTRACT ADMINISTRATOR AND RETURN TO THE CITY YARD. ABANDON THE REMAINING VALVES (AND/OR VALVE BOXES) AND HYDRANT ASSEMBLIES.
  - INSTALL WATERMAIN BY TRENCHLESS METHODS UNDER ALL PAVEMENTS, TREES, LIGHT STANDARDS, AND OTHER APPURTENANCES.
  - LOCATION OF ALL SERVICES TO BE CONFIRMED IN FIELD.
  - RENEW ALL LEAD WATER CONNECTIONS UP TO THE PROPERTY LINE WITH 19mm COPPER WATER CONNECTIONS UNLESS RENEWAL SIZE IS OTHERWISE NOTED.
  - ALL VALVES SHALL TURN CLOCKWISE TO CLOSE WITH BLACK OPERATING NUT.
  - ALL BACKFILL UNDER AND WITHIN 1.0m OF PAVEMENT OR SIDEWALK SHALL BE CLASS 3.
  - ALL BACKFILL UNDER BOULEVARD SHALL BE CLASS 5.
  - ABANDON SERVICES NO LONGER IN USE WHERE DIRECTED BY CONTRACT ADMINISTRATOR.
  - CONTRACTOR TO NOTIFY BUSINESSES AND RESIDENTS A MINIMUM OF 24 HOURS PRIOR TO ANY DISRUPTION TO WATER SERVICE.
- GENERAL NOTES**
- STATION 1+00 = SOUTHEAST CORNER OF KING EDWARD STREET AND LEGION AVENUE.



NOTE:  
RECONNECT ALL EXISTING COPPER SERVICES TO THE NEW WATERMAIN. INSTALL ANODE AT EVERY COPPER WATER SERVICE CONNECTION TO NEW PVC WATERMAIN.

NOTE:  
OFFLINE WATERMAIN RENEWAL. ABANDON EXISTING PIPE



EXISTING	LEGEND-PLAN	PROPOSED	EXISTING	LEGEND-PLAN	PROPOSED	EXISTING	LEGEND-PLAN	PROPOSED
150 WM	WATERMAIN	150 WM	TEE	TEE	TEE	TREE	TREE	TREE
400 FM	FEEDERMAIN	400 FM	CURB STOP	CURB STOP	CURB STOP	LEGAL DIMENSION	LEGAL DIMENSION	LEGAL DIMENSION
300 LDS	LAND DRAINAGE SEWER	300 LDS	PLUG	PLUG	PLUG	SURVEY BAR	SURVEY BAR	SURVEY BAR
250 WWS	WASTEWATER SEWER	250 WWS	MANHOLE	MANHOLE	MANHOLE	TRAFFIC SIGNAL	TRAFFIC SIGNAL	TRAFFIC SIGNAL
300 CS	COMBINED SEWER	300 CS	CATCHBASIN	CATCHBASIN	CATCHBASIN	GAS	GAS	GAS
200 FCM	FORCEMAIN	200 FCM	CURB INLET	CURB INLET	CURB INLET	HYDRO	HYDRO	HYDRO
	REDUCER	REDUCER	ZINC ANODE	ZINC ANODE	ZINC ANODE	ASPHALT	ASPHALT	ASPHALT
	HYDRANT	HYDRANT	CURB	CURB	CURB	CURB	CURB	CURB
	VALVE	VALVE	HYDRO POLE	HYDRO POLE	HYDRO POLE	ADDRESS	ADDRESS	ADDRESS
	BEND	BEND	ANCHOR	ANCHOR	ANCHOR	SIGN	SIGN	SIGN

LOCATION APPROVED UNDERGROUND STRUCTURES

SUPV. U/G STRUCTURES COMMITTEE	DATE

NOTE:  
LOCATION OF UNDERGROUND STRUCTURES AS SHOWN ARE BASED ON THE BEST INFORMATION AVAILABLE. BUT NO GUARANTEE IS GIVEN THAT ALL EXISTING UTILITIES ARE SHOWN OR THAT THE GIVEN LOCATIONS ARE EXACT. CONFIRMATION OF EXISTENCE AND EXACT LOCATION OF ALL SERVICES MUST BE OBTAINED FROM THE INDIVIDUAL UTILITIES BEFORE PROCEEDING WITH CONSTRUCTION.

B.M. ELEV.

NO.	REVISIONS	DATE	BY
01	ISSUED FOR TENDER	11.04.05	LJA
00	ISSUED FOR APPROVAL	11.04.03	LJA

**WARDROP**  
A TERRACON COMPANY

PEOPLE. PASSION. PERFORMANCE. TRUSTED GLOBALLY.

DESIGNED BY: GWC  
CHECKED BY: KJM  
DRAWN BY: GMD/NL  
APPROVED BY: GS

HOR. SCALE: 1 : 250  
VERTICAL: 1 : 50

RELEASED FOR CONSTRUCTION  
DATE: 11.02.10

PROVINCE OF MANITOBA  
REGISTERED PROFESSIONAL ENGINEER  
K.J. MCRAE  
1211/04/05

**THE CITY OF WINNIPEG**  
WATER AND WASTE DEPARTMENT

2011 - WATERMAIN RENEWALS CONTRACT 3

KING EDWARD STREET  
LANE SOUTH OF LEGION AVENUE TO  
LANE NORTH OF LEGION AVENUE

CITY DRAWING NUMBER: D-12359  
SHEET: 8 OF 12  
C0008