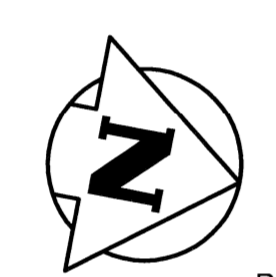


WATER CONNECTION DATA					
ADDRESS	SIZE & TYPE	DISTANCE TO PL	STOP COCK LOCATION SHORT / LONG	CORPORATION COCK LOCATION	COMMENTS
1751 KING EDWARD ST (RESIDENTIAL)	UNKNOWN	0.6	2.3 S OF N SIDE BLDG	-	STOP COCK 17.1 S OF S LINE ELGIN AVE
1755 KING EDWARD ST (RESIDENTIAL)	UNKNOWN	0.3	4.3 E OF W SIDE BLDG	-	STOP COCK 19.8 E OF E LINE KING EDWARD ST
1759 KING EDWARD ST (RESIDENTIAL)	19 COPPER		2.4 W OF E SIDE BLDG	-	SERVICED OFF ELGIN AVE
1761 KING EDWARD ST (RESIDENTIAL)	19 COPPER		5.2 N OF S SIDE BLDG	-	
1765 KING EDWARD ST (RESIDENTIAL)	19 COPPER	0.46	2.4 N OF S LINE BLDG	-	
1767 KING EDWARD ST (RESIDENTIAL)	UNKNOWN		7.6 S OF N LINE BLDG	-	
1770 KING EDWARD ST (COMMERCIAL)	38 COPPER		7.6 E OF W SIDE BLDG	-	STOP COCK 12.2 N OF N LINE OF SCHOOL
1771 KING EDWARD ST (RESIDENTIAL)	UNKNOWN		EVEN WITH E COR BLDG	-	
1775 KING EDWARD ST (RESIDENTIAL)	19 COPPER		9.1 E OF E	-	



MATCH LINE 2+20

NOTE:
CHAINAGE IS ALONG EAST LIMIT OF KING EDWARD STREET RIGHT-OF-WAY.

NOTE:
RECONNECT ALL EXISTING COPPER SERVICES TO NEW WATERMAIN.
INSTALL ANODE AT EVERY COPPER WATER SERVICE CONNECTION TO NEW PVC WATERMAIN.

NOTE:
KING EDWARD STREET IS PART OF 2011 PAVEMENT RENEWAL PROJECT.
FINAL SURFACE RESTORATION OF PAVEMENTS, BOULEVARDS, AND SIDEWALKS EXCAVATED FOR WATERMAIN CONSTRUCTION IN THIS PORTION OF KING EDWARD STREET WILL BE CARRIED OUT BY THE PAVEMENT RENEWAL CONTRACTOR.

- CONSTRUCTION NOTES**
1. WATERMAIN TO HAVE 2.5m COVER FROM CENTRELINE OF ROAD.
 2. ALL CURB REPLACEMENT TO MATCH EXISTING CURB.
 3. ALL EXISTING WATERMANS AT CONNECTION LOCATIONS ARE TO HAVE INVERTS VERIFIED PRIOR TO CONSTRUCTION.
 4. INSTALL ALL HYDRANTS WITH FLANGE ELEVATION FROM 50mm TO 150mm ABOVE FINISHED GRADE.
 5. SALVAGE ALL EXISTING HYDRANT ASSEMBLIES AND VALVES WHEN DIRECTED BY THE CONTRACT ADMINISTRATOR AND RETURN TO THE CITY YARD. ABANDON THE REMAINING VALVES (AND/OR VALVE BOXES) AND HYDRANT ASSEMBLIES.
 6. INSTALL WATERMAIN BY TRENCHLESS METHODS UNDER ALL PAVEMENTS, TREES, LIGHT STANDARDS, AND OTHER APPURTENANCES.
 7. LOCATION OF ALL SERVICES TO BE CONFIRMED IN FIELD.
 8. RENEW ALL LEAD WATER CONNECTIONS UP TO THE PROPERTY LINE WITH 19mm COPPER WATER CONNECTIONS UNLESS RENEWAL SIZE IS OTHERWISE NOTED.
 9. ALL VALVES SHALL TURN CLOCKWISE TO CLOSE WITH BLACK OPERATING NUT.
 10. ALL BACKFILL UNDER AND WITHIN 1.0m OF PAVEMENT OR SIDEWALK SHALL BE CLASS 3.
 11. ALL BACKFILL UNDER BOULEVARD SHALL BE CLASS 5.
 12. ABANDON SERVICES NO LONGER IN USE WHERE DIRECTED BY CONTRACT ADMINISTRATOR.
 13. CONTRACTOR TO NOTIFY BUSINESSES AND RESIDENTS A MINIMUM OF 24 HOURS PRIOR TO ANY DISRUPTION TO WATER SERVICE.

- GENERAL NOTES**
1. STATION 1+00 = SOUTHWEST CORNER OF KING EDWARD STREET AND ELGIN AVENUE W.

APEGM
Certificate of Authorization
Wardrop Engineering Inc.
No. 195 Expiry: April 30, 2011

150 WM	WATERMAIN	150 WM	TEE	15.240	TREE
400 FM	FEEDERMAIN	400 FM	CURB STOP		LEGAL DIMENSION
300 LDS	LAND DRAINAGE SEWER	300 LDS	PLUG		SURVEY BAR
250 WWS	WASTEWATER SEWER	250 WWS	MANHOLE		TRAFFIC SIGNAL
300 CS	COMBINED SEWER	300 CS	CATCHBASIN		GAS
200 FCM	FORCEMAIN	200 FCM	CURB INLET		HYDRO
	REDUCER		ZINC ANODE		ASPHALT
	HYDRANT		HYDRO POLE		CURB
	VALVE		LIGHT STANDARD		ADDRESS
	BEND		ANCHOR		SIGN

LOCATION APPROVED UNDERGROUND STRUCTURES

SUPV. U/G STRUCTURES COMMITTEE DATE

NOTE:
LOCATION OF UNDERGROUND STRUCTURES AS SHOWN ARE BASED ON THE BEST INFORMATION AVAILABLE. BUT NO GUARANTEE IS GIVEN THAT ALL EXISTING UTILITIES ARE SHOWN OR THAT THE GIVEN LOCATIONS ARE EXACT. CONFIRMATION OF EXISTENCE AND EXACT LOCATION OF ALL SERVICES MUST BE OBTAINED FROM THE INDIVIDUAL UTILITIES BEFORE PROCEEDING WITH CONSTRUCTION.

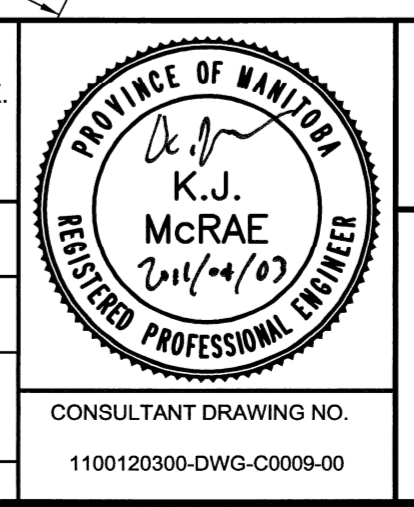
B.M. ELEV.	
ISSUED FOR TENDER	11.04.05
ISSUED FOR APPROVAL	11.04.05
NO. REVISIONS	DATE BY

WARDROP
PEOPLE. PASSION. PERFORMANCE. TRUSTED GLOBALLY.

DESIGNED BY GWC CHECKED BY KJM
DRAWN BY GMD/NL APPROVED BY GS

HOR. SCALE: 1:250
VERTICAL: 1:50

DATE 11.02.10



THE CITY OF WINNIPEG
WATER AND WASTE DEPARTMENT

2011 - WATERMAIN RENEWALS CONTRACT 3

KING EDWARD STREET
ELGIN AVENUE W TO
10m NORTH OF ROSS AVENUE W

CITY DRAWING NUMBER D-12360
SHEET 9 OF 12
C0009