

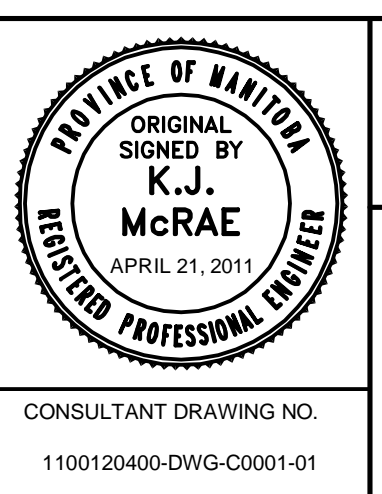
WATER SERVICE INFORMATION					
ADDRESS	SIZE (mm) & TYPE (STREET)	SIZE (mm) & TYPE (PROP.)	SHORT & LONG MEASUREMENT	CORP. LOCATION	REMARKS
380 PADDINGTON RD	20 PB	20	19.64 NNL WILLOWBEND NLEG	2.0 S S/C	RENEW TO E W/20 COPPER
382 PADDINGTON RD	20 PB	20	11.83 NNL WILLOWBEND NLEG	OPP S/C	RENEW TO E W/20 COPPER
386 PADDINGTON RD	20 PB	20	3.86 NNL WILLOWBEND NLEG	0.3 S S/C	RENEW TO E W/20 COPPER
388 PADDINGTON RD	20 PB	20	3.82 SNL WILLOWBEND NLEG	OPP S/C	RENEW TO E W/20 COPPER
392 PADDINGTON RD	20 PB	20	13.02 SNL WILLOWBEND NLEG	1.0 N S/C	RENEW TO E W/20 COPPER
394 PADDINGTON RD	20 PB	20	0.06 SSL WILLOWBEND NLEG	0.7 N S/C	RENEW TO E W/20 COPPER
396 PADDINGTON RD	20 PB	20	24.94 SSL WILLOWBEND NLEG	1.0 S S/C	RENEW TO E W/20 COPPER
404 PADDINGTON RD	20 PB	20	30.99 SSL WILLOWBEND NLEG	0.8 S S/C	RENEW TO E W/20 COPPER
406 PADDINGTON RD	20 PB	20	37.84 SSL WILLOWBEND NLEG	0.6 S S/C	RENEW TO E W/20 COPPER
410 PADDINGTON RD	20 PB	20	12.85 NNL CHARING CROSS	OPP S/C	RENEW TO E W/20 COPPER
412 PADDINGTON RD	20 PB	20	4.06 SSL CHARING CROSS	0.6 S S/C	RENEW TO E W/20 COPPER
416 PADDINGTON RD	20 PB	20	21.30 SSL CHARING CROSS	0.9 S S/C	RENEW TO E W/20 COPPER
422 PADDINGTON RD	20 PB	20	7.44 SSL CHARING CROSS	0.9 S S/C	RENEW TO E W/20 COPPER
424 PADDINGTON RD	20 PB	20	44.13 SSL CHARING CROSS	1.4 N S/C	RENEW TO E W/20 COPPER
426 PADDINGTON RD	20 PB	20	52.17 SSL CHARING CROSS	0.3 N S/C	RENEW TO E W/20 COPPER
428 PADDINGTON RD	20 PB	20	59.89 SSL CHARING CROSS	1.0 N S/C	RENEW TO E W/20 COPPER
430 PADDINGTON RD	20 PB	20	67.32 SSL CHARING CROSS	OPP S/C	RENEW TO E W/20 COPPER
432 PADDINGTON RD	20 PB	20	73.52 SSL CHARING CROSS	0.2 N S/C	RENEW TO E W/20 COPPER
434 PADDINGTON RD	20 PB	20	81.46 SSL CHARING CROSS	0.9 S S/C	RENEW TO E W/20 COPPER
436 PADDINGTON RD	20 PB	20	89.17 SSL CHARING CROSS	0.2 N S/C	RENEW TO E W/20 COPPER
438 PADDINGTON RD	20 PB	20	97.66 SSL CHARING CROSS	OPP S/C	RENEW TO E W/20 COPPER
440 PADDINGTON RD	20 PB	20	105.08 SSL CHARING CROSS	OPP S/C	RENEW TO E W/20 COPPER
442 PADDINGTON RD	20 PB	20	7.66 WWL PADDINGTON	0.2 W S/C	RENEW TO E W/20 COPPER
444 PADDINGTON RD	20 PB	20	7.83 WWL PADDINGTON	0.6 W S/C	RENEW TO E W/20 COPPER
446 PADDINGTON RD	20 PB	20	21.17 WWL PADDINGTON	0.8 W S/C	RENEW TO E W/20 COPPER
448 PADDINGTON RD	20 PB	20	21.25 WWL PADDINGTON	1.0 W S/C	RENEW TO E W/20 COPPER
450 PADDINGTON RD	20 PB	20	37.65 WWL PADDINGTON	0.4 E S/C	RENEW TO E W/20 COPPER
452 PADDINGTON RD	20 PB	20	35.14 WWL PADDINGTON	1.0 W S/C	RENEW TO E W/20 COPPER
454 PADDINGTON RD	20 PB	20	35.14 WWL PADDINGTON	0.4 W S/C	RENEW TO E W/20 COPPER
456 PADDINGTON RD	20 PB	20	49.05 WWL PADDINGTON	0.4 W S/C	RENEW TO E W/20 COPPER
458 PADDINGTON RD	20 PB	20	49.65 WWL PADDINGTON	0.9 W S/C	RENEW TO E W/20 COPPER
460 PADDINGTON RD	20 PB	20	62.86 WWL PADDINGTON	0.8 W S/C	RENEW TO E W/20 COPPER
462 PADDINGTON RD	20 PB	20	61.88 WWL PADDINGTON	1.5 W S/C	RENEW TO E W/20 COPPER
464 PADDINGTON RD	20 PB	20	77.58 WWL PADDINGTON	0.4 W S/C	RENEW TO E W/20 COPPER
466 PADDINGTON RD	20 PB	20	77.72 WWL PADDINGTON	0.2 E S/C	RENEW TO E W/20 COPPER
468 PADDINGTON RD	20 PB	20	90.06 WWL PADDINGTON	0.2 E S/C	RENEW TO E W/20 COPPER
470 PADDINGTON RD	20 PB	20	104.01 WWL PADDINGTON	1.1 E S/C	RENEW TO E W/20 COPPER
472 PADDINGTON RD	20 PB	20	103.56 WWL PADDINGTON	0.2 W S/C	RENEW TO E W/20 COPPER
474 PADDINGTON RD	20 PB	20	117.96 WWL PADDINGTON	0.6 E S/C	RENEW TO E W/20 COPPER
476 PADDINGTON RD	20 PB	20	117.12 WWL PADDINGTON	1.1 W S/C	RENEW TO E W/20 COPPER
478 PADDINGTON RD	20 PB	20	128.62 WWL PADDINGTON	OPP S/C	RENEW TO E W/20 COPPER
480 PADDINGTON RD	20 PB	20	130.87 WWL PADDINGTON	0.9 E S/C	RENEW TO E W/20 COPPER
482 PADDINGTON RD	20 PB	20	49.39 EEL WILLOWBEND WLEG	1.7 E S/C	RENEW TO E W/20 COPPER
484 PADDINGTON RD	20 PB	20	47.58 EEL WILLOWBEND WLEG	0.6 E S/C	RENEW TO E W/20 COPPER
486 PADDINGTON RD	20 PB	20	36.21 EEL WILLOWBEND WLEG	1.4 E S/C	RENEW TO E W/20 COPPER
488 PADDINGTON RD	20 PB	20	34.30 EEL WILLOWBEND WLEG	1.3 W S/C	RENEW TO E W/20 COPPER
490 PADDINGTON RD	20 PB	20	21.90 EEL WILLOWBEND WLEG	0.3 W S/C	RENEW TO E W/20 COPPER
492 PADDINGTON RD	20 PB	20	21.47 EEL WILLOWBEND WLEG	OPP S/C	RENEW TO E W/20 COPPER
494 PADDINGTON RD	20 PB	20	5.59 EEL WILLOWBEND WLEG	1.1 W S/C	RENEW TO E W/20 COPPER
496 PADDINGTON RD	20 PB	20	7.87 EEL WILLOWBEND WLEG	2.9 E S/C	RENEW TO E W/20 COPPER
498 PADDINGTON RD	20 PB	20	3.94 WEL WILLOWBEND WLEG	14.3 E S/C	RENEW TO E W/20 COPPER
500 PADDINGTON RD	20 PB	20	16.27 WEL WILLOWBEND WLEG	5.3 S S/C	RENEW TO E W/20 COPPER
502 PADDINGTON RD	20 PB	20	6.79 NSL WILLOWBEND NLEG	0.9 S S/C	RENEW TO E W/20 COPPER
504 PADDINGTON RD	20 PB	20	7.89 SSL WILLOWBEND NLEG	1.6 S S/C	RENEW TO E W/20 COPPER
506 PADDINGTON RD	20 PB	20	21.51 SSL WILLOWBEND NLEG	6.5 S S/C	RENEW TO E W/20 COPPER
508 PADDINGTON RD	20 PB	20	8.58 NNL SONNING	0.7 S S/C	RENEW TO E W/20 COPPER
510 PADDINGTON RD	20 PB	20	3.63 NNL SONNING	0.7 S S/C	RENEW TO E W/20 COPPER
512 PADDINGTON RD	20 PB	20	10.30 SNL SONNING	0.7 S S/C	RENEW TO E W/20 COPPER
514 PADDINGTON RD	20 PB	20	11.53 SSL SONNING	2.4 S S/C	RENEW TO E W/20 COPPER
516 PADDINGTON RD	20 PB	20	7.69 SSL SONNING	1.0 S S/C	RENEW TO E W/20 COPPER
518 PADDINGTON RD	20 PB	20	21.58 SSL SONNING	OPP S/C	RENEW TO E W/20 COPPER
520 PADDINGTON RD	20 PB	20	19.41 SSL SONNING	0.4 S S/C	RENEW TO E W/20 COPPER
522 PADDINGTON RD	20 PB	20	34.25 SSL SONNING	1.3 S S/C	RENEW TO E W/20 COPPER
524 PADDINGTON RD	20 PB	20	50.29 NNL WILLOWBEND NLEG	1.9 S S/C	RENEW TO E W/20 COPPER
526 PADDINGTON RD	20 PB	20	36.68 NNL WILLOWBEND NLEG	1.4 S S/C	RENEW TO E W/20 COPPER
528 PADDINGTON RD	20 PB	20	37.72 NNL WILLOWBEND NLEG	1.0 S S/C	RENEW TO E W/20 COPPER
530 PADDINGTON RD	20 PB	20	22.56 NNL WILLOWBEND NLEG	1.4 S S/C	RENEW TO E W/20 COPPER
532 PADDINGTON RD	20 PB	20	22.55 NNL WILLOWBEND NLEG	0.3 N S/C	RENEW TO E W/20 COPPER
534 PADDINGTON RD	20 PB	20	8.06 NNL WILLOWBEND NLEG	0.9 N S/C	RENEW TO E W/20 COPPER
536 PADDINGTON RD	20 PB	20	9.60 NNL WILLOWBEND NLEG	OPP S/C	RENEW TO E W/20 COPPER
538 PADDINGTON RD	20 PB	20	6.24 SNL WILLOWBEND NLEG	5.6 N S/C	RENEW TO E W/20 COPPER
540 PADDINGTON RD	20 PB	20	16.04 SNL WILLOWBEND NLEG	13.3 N S/C	RENEW TO E W/20 COPPER
542 PADDINGTON RD	20 PB	20	6.67 WEL WILLOWBEND WLEG	5.7 E S/C	RENEW TO E W/20 COPPER
544 PADDINGTON RD	20 PB	20	6.13 EEL WILLOWBEND WLEG	5.3 E S/C	RENEW TO E W/20 COPPER
546 PADDINGTON RD	20 PB	20	19.31 EEL WILLOWBEND WLEG	4.6 W S/C	RENEW TO E W/20 COPPER
548 PADDINGTON RD	20 PB	20	20.60 WWL WILLOWBEND WLEG	6.8 E S/C	RENEW TO E W/20 COPPER
550 PADDINGTON RD	20 PB	20	7.45 WWL WILLOWBEND WLEG	6.2 W S/C	RENEW TO E W/20 COPPER
552 PADDINGTON RD	20 PB	20	34.30 WWL PADDINGTON	6.8 W S/C	RENEW TO E W/20 COPPER
554 PADDINGTON RD	20 PB	20	22.09 WWL PADDINGTON	2.1 E S/C	RENEW TO E W/20 COPPER
556 PADDINGTON RD	20 PB	20	20.49 WWL PADDINGTON	0.5 W S/C	RENEW TO E W/20 COPPER
558 PADDINGTON RD	20 PB	20	7.62 WWL PADDINGTON	1.1 E S/C	RENEW TO E W/20 COPPER
560 PADDINGTON RD	20 PB	20	7.74 WWL PADDINGTON	0.2 E S/C	RENEW TO E W/20 COPPER

EXISTING	LEGEND-PLAN	PROPOSED	EXISTING	LEGEND-PLAN	PROPOSED	EXISTING	LEGEND-PLAN	PROPOSED
150 WM	WATERMAIN	---	TEE	+	---	TREE	+	---
400 FM	FEEDERMAIN	---	CURB STOP	+	15.240	LEGAL DIMENSION	---	---
300 LDS	LAND DRAINAGE SEWER	---	PLUG	+	---	SURVEY BAR	---	---
250 WWS	WASTEWATER SEWER	---	MANHOLE	+	---	TRAFFIC SIGNAL	---	---
300 CS	COMBINED SEWER	---	CATCHBASIN	+	---	GAS	---	---
200 FCM	FORCEMAIN	---	CURB INLET	+	---	HYDRO	---	---
---	REDUCER	---	ZINC ANODE	+	---	ASPHALT	---	---
---	HYDRANT	+	HYDRO POLE	+	---	CURB	---	---
---	VALVE	+	LIGHT STANDARD	+	66	ADDRESS	---	---
---	BEND	+	ANCHOR	+	---	SIGN	---	---

LOCATION APPROVED UNDERGROUND STRUCTURES	DATE
SUPV. U/G STRUCTURES COMMITTEE	DATE

B.M. ELEV.	DATE	BY	
01	ISSUED FOR TENDER	11.04.21	KJM
00	ISSUED FOR APPROVAL	11.04.21	KJM
NO.	REVISIONS	DATE	BY

DESIGNED BY	CHECKED BY	APPROVED BY	RELEASED FOR CONSTRUCTION
GWC	KJM	GS	KAS ZUREK



WARDROP PEOPLE, PASSION, PERFORMANCE. TRUSTED GLOBALLY.

THE CITY OF WINNIPEG WATER AND WASTE DEPARTMENT

2011 WATER SERVICE REPLACEMENT PROGRAM
 CONTRACT 11
 WILLOWBEND CRESCENT
 NORTH, SOUTH, WEST AND EAST LEGS

CITY DRAWING NUMBER: D-12397
 SHEET 1 OF 2

PADDINGTON ROAD
 WARDE AVE TO 253m N OF WARDE AVE

C0001

METRIC
 WHOLE NUMBERS INDICATE MILLIMETRES
 DECIMALIZED NUMBERS INDICATE METRES

WARNING
 IF POWER EQUIPMENT OR EXPLOSIVES ARE TO BE USED FOR EXCAVATION ON THIS PROJECT THE CONTRACTOR MUST:
 1) NOTIFY THE GAS COMPANY OF THE PROPOSED LOCATION OF EXCAVATION.
 2) TAKE PRECAUTION TO AVOID DAMAGE TO GAS COMPANY INSTALLATIONS.
 SEE PROVINCIAL REGULATION 210/72 FOR DETAILS



- CONSTRUCTION NOTES**
- CONFIRM LOCATION OF ALL SERVICES IN THE FIELD.
 - CONNECT ALL NEW SERVICES AT EXISTING CORP. LOCATIONS UNLESS OTHERWISE NOTED OR AS DIRECTED BY THE CONTRACT ADMINISTRATOR.
 - * INDICATES SERVICE HAS BEEN PREVIOUSLY RENEWED

CAUTION: FEEDERMAIN DO NOT OPERATE HEAVY OR VIBRATORY EQUIPMENT OVER OR WITHIN 3.0m OF CENTRE LINE OF FEEDERMAIN.
 CONTACT THE WATER AND WASTE DEPARTMENT CONSTRUCTION SERVICES COORDINATOR AT 986-3823
 A MINIMUM OF SEVEN DAYS PRIOR TO CROSSING OR WORKING ADJACENT TO FEEDERMAINS TO ARRANGE FOR INSPECTION.
 EXPOSE AQUEDUCT OR FEEDERMAIN BY HYDRO VACUUM OR OTHER SOFT DIG METHODS TO CONFIRM DEPTH AND ALIGNMENT OF PIPE.

NOTE: 250 WM UNKNOWN PIPE MATERIAL (ASSUME TO BE AC)

NOTE: RELOCATE BUS STOP WHILE WORKING ON THIS BLOCK

CAUTION: HYDRO CROSSINGS, SL & 600 FEEDERMAIN ON E SIDE OF PADDINGTON ROAD

CAUTION: GAS, WWS & LDS ON N SIDE OF WILLOWBEND CR N LEG

CAUTION: GAS, WWS & LDS ON N SIDE OF WILLOWBEND CR S LEG

CAUTION: SL ON S SIDE OF WILLOWBEND CR N LEG

CAUTION: SL ON S SIDE OF WILLOWBEND CR W LEG

CAUTION: GAS, WWS & LDS ON W SIDE OF WILLOWBEND CR E LEG

CAUTION: SL ON E SIDE OF WILLOWBEND CR E LEG

CAUTION: GAS, WWS & LDS ON W SIDE OF WILLOWBEND CR W LEG