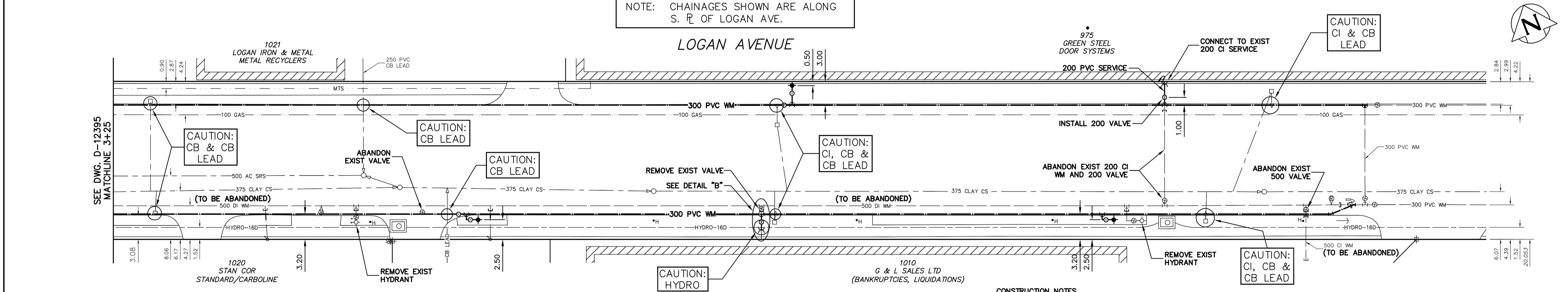


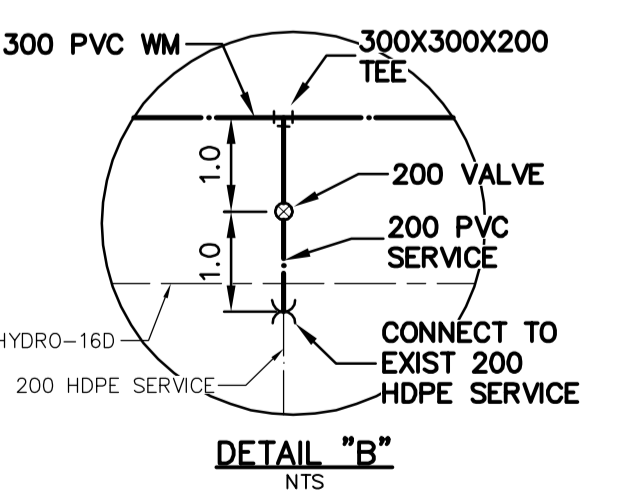
NOTE: CHAINAGES SHOWN ARE ALONG S. R. OF LOGAN AVE.



WATER SERVICE INFORMATION

ADDRESS	SIZE(mm) & TYPE (STREET)	SIZE(mm) & TYPE (PROP.)	SHORT & LONG MEASUREMENT	CORP. LOCATION	REMARKS
975 LOGAN ST COMMERCIAL	200	200	53.24 WEL BLDG 143.61 WML TRINITY	OPP VALVE	RENEW TO R/W/200 PVC
1010 LOGAN ST SPRINKLER	200	200	22.31 EWL BLDG 107.60 EEL MAUDE	OPP VALVE	RECONNECT SPRINKLER
1010 LOGAN ST COMMERCIAL	25	25	12.16 WML BLDG 72.98 EEL MAUDE	OPP S/C	RECONNECT SERVICE
1020 LOGAN ST COMMERCIAL	20	20	2.67 EWL BLDG 44.56 EEL MAUDE	0.3 W OF S/C	RECONNECT SERVICE
1021 LOGAN ST COMMERCIAL	20	20	4.96 EWL BLDG 9.15 EEL MAUDE	0.3 W OF S/C	RECONNECT SERVICE

* SERVICES TO BE RENEWED TO R/W UPON CONFIRMATION BY THE CONTRACTOR OF EXISTING LEAD SERVICE.



- CONSTRUCTION NOTES**
1. EXPOSE EXISTING WATERMAIN & CONFIRM INVERTS PRIOR TO CONSTRUCTION.
 2. LOCATION OF ALL SERVICES TO BE CONFIRMED IN THE FIELD.
 3. INSTALL WATERMAIN BY TRENCHLESS METHODS.
 4. TRENCHES AND EXCAVATIONS WITHIN 1 METRE OF A PAVED AREA INCLUDING SIDEWALKS SHALL BE CLASS 3 BACKFILL.
 5. ALL MATERIALS SHALL CONFORM TO THE CITY OF WINNIPEG STANDARD CONSTRUCTION SPECIFICATIONS.
 6. MINIMUM COVER TO TOP OF WATERMAIN SHALL BE 2.4 m.
 7. REPLACE ALL EXISTING LEAD SERVICES FROM PROPOSED WATERMAIN TO R.
 8. NOTIFY ALL AFFECTED RESIDENTS AND BUSINESSES 24 HOURS IN ADVANCE OF ANY WATER SHUTDOWNS OR DISRUPTION OF SERVICE.

WARNING
 IF POWER EQUIPMENT OR EXPLOSIVES ARE TO BE USED FOR EXCAVATION ON THIS PROJECT THE CONTRACTOR MUST:
 1) NOTIFY THE GAS COMPANY OF THE PROPOSED LOCATION OF EXCAVATION.
 2) TAKE PRECAUTION TO AVOID DAMAGE TO GAS COMPANY INSTALLATIONS.
 SEE PROVINCIAL REGULATION 210/72 FOR DETAILS

EXISTING	LEGEND-PLAN	PROPOSED	EXISTING	LEGEND-PLAN	PROPOSED	EXISTING	LEGEND-PROFILE	PROPOSED
200 WM	WATERMAIN	200 WM	SL, HYDRO	MTS	150 WM	WATERMAIN	150 WM	
525 LDS	LAND DRAINAGE SEWER	525 LDS	50 GAS	TRAFFIC SIGNALS	50 GAS	HYDRANT	50 GAS	
375 WWS	WASTEWATER SEWER	375 WWS	SURVEY BAR	FENCE	250 WWS	VALVE	250 WWS	
○	MANHOLE	●	* * *	POLE - HYDRO, MTS	△	GROUND ABOVE PIPE	△	
□	CATCH BASIN	■	* H * T	CURB STOP	▽	② DITCH (NORTH & WEST)	▽	
▽	CURB INLET	▼	♂	REDUCER	⊕	② DITCH (SOUTH & EAST)	⊕	
△	REDUCER	⊕	♂	GUY ANCHOR	▽	GUTTER (NORTH & WEST)	▽	
X	COUPLER	X	→	LIGHT STANDARD	○	GUTTER (SOUTH & EAST)	○	
⊕	ANODE	⊕	○	TREE	○		○	
⊕	LEGEND-PLAN	⊕	⊕	LEGEND-PLAN	⊕	LEGEND-PROFILE	⊕	PROPOSED

NO.	REVISIONS	DATE	BY

DESIGNED BY	CHECKED BY	DRAWN BY	APPROVED BY	HOR. SCALE	VERTICAL	DATE
RC	SC	CJH	SC	1:250	1:50	2011 04 08

ENGINEER'S SEAL
 ORIGINAL SIGNED BY
 S.R.J. COUNOYER
 11-04-08

THE CITY OF WINNIPEG
 WATER AND WASTE DEPARTMENT

2011 WATERMAIN RENEWALS
 CONTRACT NO. 1
LOGAN AVENUE
 25 E OF MAUDE STREET TO
 200 E OF MAUDE STREET

SHEET 3 OF 3
 CITY DRAWING NUMBER
D-12396