

TEMPORARY ASPHALT PAVEMENT WIDENING DETAIL

NTS



STAGE 1A CONSTRUCTION WORKS

→ STAGE 1A TRAFFIC

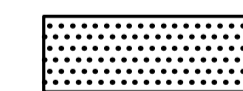
ANTICIPATED START JUNE 27/11 TO JULY 22/11
 COMPLETE EB GUTTER LANE 65m FROM THE CP TRACKS, INCLUDING CURBS AND SIDEWALK REMOVE CURB AND A PORTION OF THE SIDEWALK ON THE NORTH SIDE OF LOGAN FROM THE TRACKS TO 1ST APPROACH EAST OF McPHILLIPS STREET, PLACE 350mm OF 50mm LIMESTONE AND 80mm OF ASPHALT.
 COMPLETE RIGHT TURN YIELD LANE AND WESTBOUND THRU LANE FROM McPHILLIPS TO YEOMANS STREET
 COMPLETE THE MILL AND FILL ON McPHILLIPS FROM NOTRE DAME AVENUE TO LOGAN AVENUE
 MAINTAIN 1 LANE OF TRAFFIC IN EACH DIRECTION IN MEDIAN LANES OF LOGAN AVENUE



STAGE 1B CONSTRUCTION WORKS

→ STAGE 1B TRAFFIC

ANTICIPATED START JULY 25/11-AUG 26/11
 COMPLETE EB LANES FROM McPHILLIPS STREET TO 65m WEST OF THE CP TRACKS
 MAINTAIN 1 LANE OF TRAFFIC IN EACH DIRECTION ON WB LANES WITH THE EB TRAFFIC TRANSITIONING INTO THE EB MEDIAN LANE 65m WEST OF TRACKS. INCLUDE MISCELLANEOUS WORKS WEST AND THROUGH THE McPHILLIPS STREET AND LOGAN AVENUE INTERSECTION IN THE EASTBOUND LANES.



STAGE 2 CONSTRUCTION WORKS

→ STAGE 2 TRAFFIC

ANTICIPATED START AUG 29/11 TO OCTOBER 14/11
 COMPLETE WB LANES FROM THE TRACKS TO McPHILLIPS STREET INCLUDING THE MEDIAN AND ASPHALT WORK WEST OF McPHILLIPS STREET.
 COMPLETE THE MILL AND FILL OF THE INTERSECTION AT THIS TIME. A WEEKEND CLOSURE IS REQUIRED FOR THIS WORK.
 MAINTAIN 1 LANE OF TRAFFIC IN THE EB GUTTER LANE DURING THIS STAGE
 NO WESTBOUND TRAFFIC WILL BE ACCOMMODATED DURING STAGE 2



STAGE 1A SUBSTAGE CONSTRUCTION WORKS

→ SUBSTAGE 1A TRAFFIC

ANTICIPATED START JUNE 27/11 TO JULY 22/11
 APPROX. 2 WEEK DURATION TO COMPLETE EB MEDIAN LANE 65m FROM CP TRACKS. EB TRAFFIC IN WB MEDIAN LANE. CP AND TRAFFIC FLAGGING REQUIRED. LIMITS OF THIS WORK TO 65m WEST OF THE TRACKS. WORK TO BE COMPLETED DURING STAGE 1 A. CRITICAL STAGE COMPLETION DATE JULY 22/11



METRIC

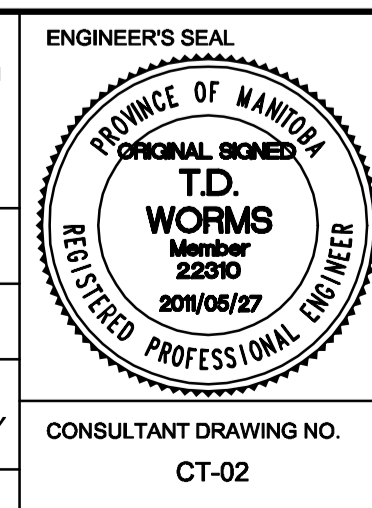
WHOLE NUMBERS INDICATE MILLIMETRES
 DECIMALIZED NUMBERS INDICATE METRES

150 mm W.M.	WATERMAIN	150 mm W.M.	HYDRO	C PROFILE
+	HYDRANT	+	M.T.S.	NORTH/WEST GUTTER
⊕	VALVE	⊕	CONCRETE	SOUTH/EAST GUTTER
300mm L.D.S.	LAND DRAINAGE SEWER	300mm L.D.S.	ASPHALT	N/W PROPERTY LINE
250mm W.W.S.	WASTEWATER SEWER	250mm W.W.S.	PROPERTY LINE	S/E PROPERTY LINE
○	MANHOLE	⊕	SURVEY BAR	
□	CATCH BASIN	235.750	ELEVATION	(35.750)
▽	CURB INLET	500φ	TREE	
—	JUNCTIONS		SIDEWALK RAMP	
—	CULVERT		CONCRETE SIDEWALK	
—	GAS		FENCE	
EXISTING	LEGEND - PLAN	PROPOSED	EXISTING	LEGEND - PROFILE

LOCATION APPROVED	B.M.	S.E. Cor. Logan Ave. & Trinity St., Tbt. in N. Conc. 1dn. of No. 936 Logan Ave., 3 m W. & 0.3 m below window of N.E. Cor. of Bldg.
UNDERGROUND STRUCTURES	36-020	ELEV. 232.294
SUPV. U/G STRUCTURES COMMITTEE	DATE	
NOTE:		
LOCATION OF UNDERGROUND STRUCTURES AS SHOWN ARE BASED ON THE BEST INFORMATION AVAILABLE, BUT NO GUARANTEE IS GIVEN THAT ALL EXISTING UTILITIES ARE SHOWN OR THAT THE GIVEN LOCATIONS ARE EXACT. CONFIRMATION OF EXISTENCE AND EXACT LOCATION OF ALL SERVICES MUST BE OBTAINED FROM THE INDIVIDUAL UTILITIES BEFORE PROCEEDING WITH CONSTRUCTION.		

NO.	REVISIONS	DATE	BY
0	ISSUED FOR TENDER	2011/05/27	KWR
A	ISSUED FOR REVIEW	2011/05/13	KWR

DESIGNED BY	TDW	CHECKED BY	KWR
DRAWN BY	PAAP	APPROVED BY	KWR
HOR. SCALE:	1:500	RELEASED FOR CONSTRUCTION BY:	B.S. KIBBINS
VERTICAL:	NA	ORIGINAL SIGNED BY:	B.S. KIBBINS
DATE	2011/05/13	DATE	2011/06/27



THE CITY OF WINNIPEG
 PUBLIC WORKS DEPARTMENT
 ENGINEERING DIVISION

LOGAN AVENUE
 McPHILLIPS STREET TO TRINITY STREET
 PAVEMENT RECONSTRUCTION

CONSTRUCTION STAGING
 YEOMANS STREET TO TRINITY STREET (RAILWAY)

CITY DRAWING NUMBER
 P-3326-02
 SHEET 2 OF 10

CONSULTANT DRAWING NO.
 CT-02