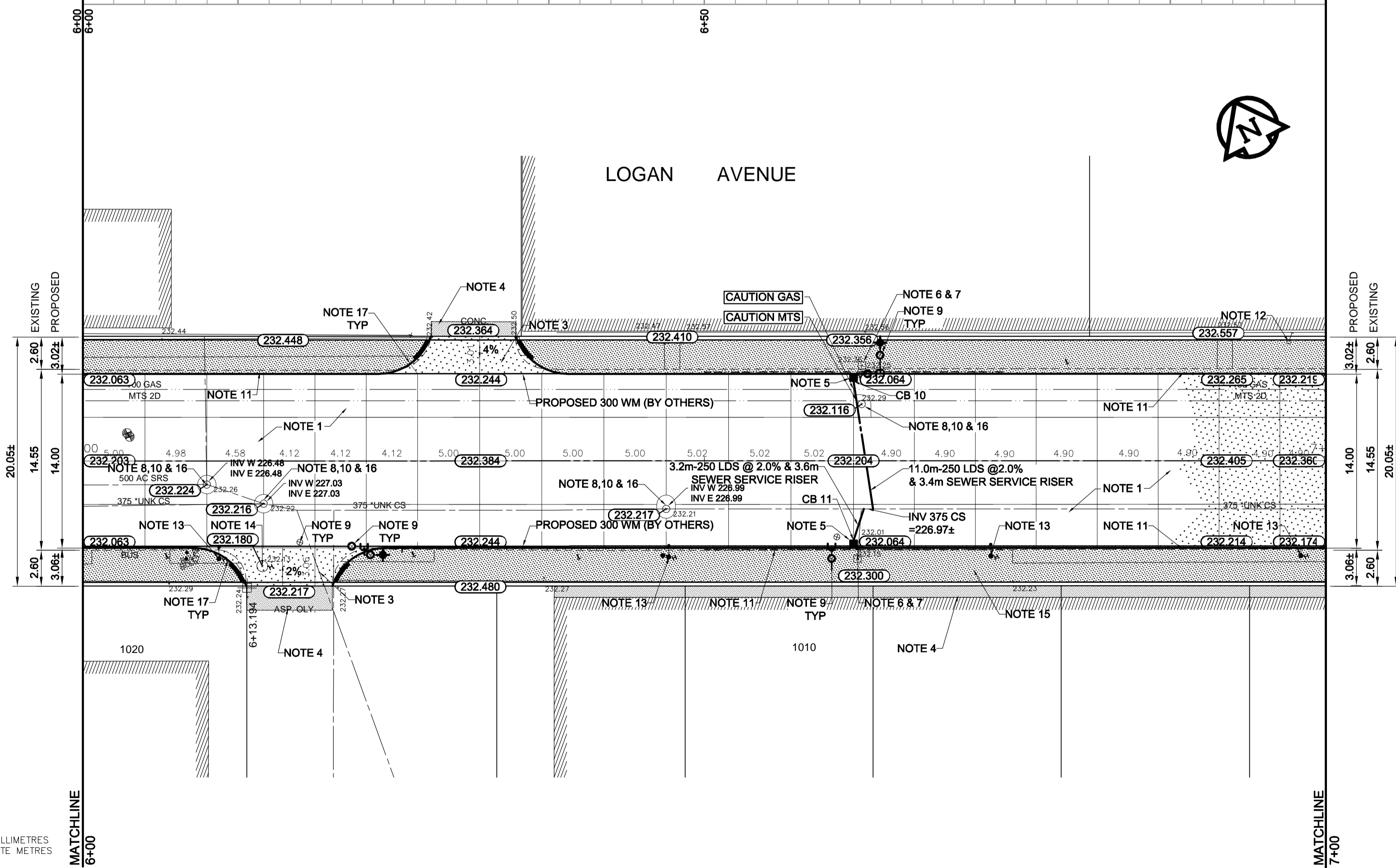


TYPICAL CROSS SECTION
N.T.S.

DESCRIPTION	RIM ELEV.	INVERT			
		EAST	WEST	NORTH	SOUTH
CB 10	232.064			231.010	230.010
CB 11	232.064				

- REFERENCE NOTES**
- PAVEMENT DIMENSIONS ARE TO BACK OF CURB
 - BASELINE IS CENTRELINE OF RIGHT-OF-WAY
 - PROPERTY LINES OBTAINED FROM THE CITY OF WINNIPEG L.B.I.S., AND NO SCALE FACTOR WAS APPLIED
 - REFER TO AECOM FIELD BOOK NO. 4703

- CONSTRUCTION NOTES**
- REMOVE EXISTING PAVEMENT AND CONSTRUCT NEW 230mm PLAIN DOWELLED CONCRETE PAVEMENT
 - CONSTRUCT NEW 200mm PLAIN DOWELLED CONCRETE PAVEMENT
 - CONSTRUCT NEW 200mm REINFORCED CONCRETE PAVEMENT
 - CONSTRUCT NEW ASPHALTIC CONCRETE OVERLAY
 - INSTALL NEW CURB AND GUTTER INLET c/w CATCH BASIN (SD-024) AND CONNECT NEW 250mm LEAD TO EXISTING 375 COMBINED SEWER
 - REMOVE EXISTING DRAINAGE INLET
 - REMOVE EXISTING CATCHBASIN AND ABANDON EXISTING LEAD
 - ADJUST EXISTING CATCHBASIN/MANHOLE FRAME AND COVER
 - ADJUST EXISTING WATERMAIN VALVE BOX TO GRADE
 - INSTALL NEW 50mm CAST IRON RISER RING
 - INSTALL 150mm SUBDRAIN 12m ON EACH SIDE OF CATCHBASIN
 - ADJUST EXISTING CURB STOP TO GRADE
 - REMOVE EXISTING HYDRO POLE (BY OTHERS)
 - ADJUST EXISTING HYDRO MANHOLE (BY OTHERS)
 - CONSTRUCT NEW MONOLITHIC BARRIER CURB (180mm HT.) AND 100mm CONCRETE SIDEWALK
 - SUPPLY AND INSTALL NEW FRAME AND COVER (AP004/AP005)
 - CONSTRUCT NEW MODIFIED BARRIER CURB (180mm HT. INTEGRAL)



METRIC
WHOLE NUMBERS INDICATE MILLIMETRES
DECIMALIZED NUMBERS INDICATE METRES

EXISTING	LEGEND - PLAN	PROPOSED	EXISTING	LEGEND - PLAN	PROPOSED	EXISTING	LEGEND - PROFILE	PROPOSED
150mm W.M.	WATERMAIN	150mm W.M.	---	HYDRO	---	---	C PROFILE	---
300mm L.D.S.	LAND DRAINAGE SEWER	300mm L.D.S.	---	CONCRETE	---	---	NORTH/WEST GUTTER	---
250mm W.W.S.	WASTEWATER SEWER	250mm W.W.S.	---	ASPHALT	---	---	SOUTH/EAST GUTTER	---
○	MANHOLE	●	---	PROPERTY LINE	---	---	N/W PROPERTY LINE	---
□	CATCH BASIN	■	---	SURVEY BAR	---	---	S/E PROPERTY LINE	---
▽	CURB INLET	▽	---	ELEVATION	(35.750)	---		
+	JUNCTIONS	+	---	TREE	---	---		
---	CULVERT	---	---	SIDEWALK RAMP	---	---		
---	GAS	---	---	CONCRETE SIDEWALK	---	---		
---	LEGEND - PLAN	---	---	FENCE	---	---		

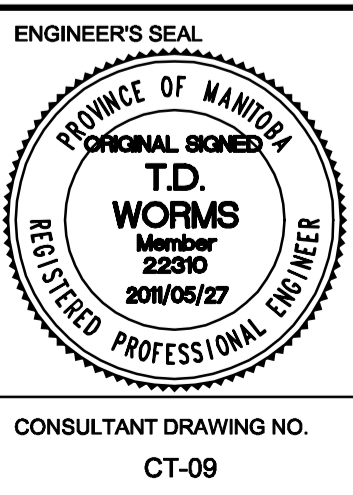
LOCATION APPROVED
UNDERGROUND STRUCTURES

SUPV. U/G STRUCTURES COMMITTEE DATE

NOTE:
LOCATION OF UNDERGROUND STRUCTURES AS SHOWN ARE BASED ON THE BEST INFORMATION AVAILABLE, BUT NO GUARANTEE IS GIVEN THAT ALL EXISTING UTILITIES ARE SHOWN OR THAT THE GIVEN LOCATIONS ARE EXACT. CONFIRMATION OF EXISTENCE AND EXACT LOCATION OF ALL SERVICES MUST BE OBTAINED FROM THE INDIVIDUAL UTILITIES BEFORE PROCEEDING WITH CONSTRUCTION.

B.M.	36-020	S.E. Cor. Logan Ave. & Trinity St., Tbt. in N. Conc. ftn. of No. 936 Logan Ave., 3 m W. & 0.3 m below window of N.E. Cor. of Bldg.	ELEV. 232.294
0	ISSUED FOR TENDER	2011/05/27	KWR
A	ISSUED FOR REVIEW	2011/05/13	KWR
NO.	REVISIONS	DATE	BY

DESIGNED BY	TDW	CHECKED BY	KWR
DRAWN BY	PAAP	APPROVED BY	KWR
HOR. SCALE:	1:250	RELEASED FOR CONSTRUCTION BY:	B.S. KIBBINS
VERTICAL:	1:10	ORIGINAL SIGNED BY:	B.S. KIBBINS
DATE	2011/05/13	DATE	2011/05/27



THE CITY OF WINNIPEG
PUBLIC WORKS DEPARTMENT
ENGINEERING DIVISION

LOGAN AVENUE
McPHILLIPS STREET TO TRINITY STREET
PAVEMENT RECONSTRUCTION

PLAN/PROFILE
STATION 6+00 TO STATION 7+00

CITY DRAWING NUMBER
P-3326-09
SHEET 9 OF 10

CONSULTANT DRAWING NO.
CT-09