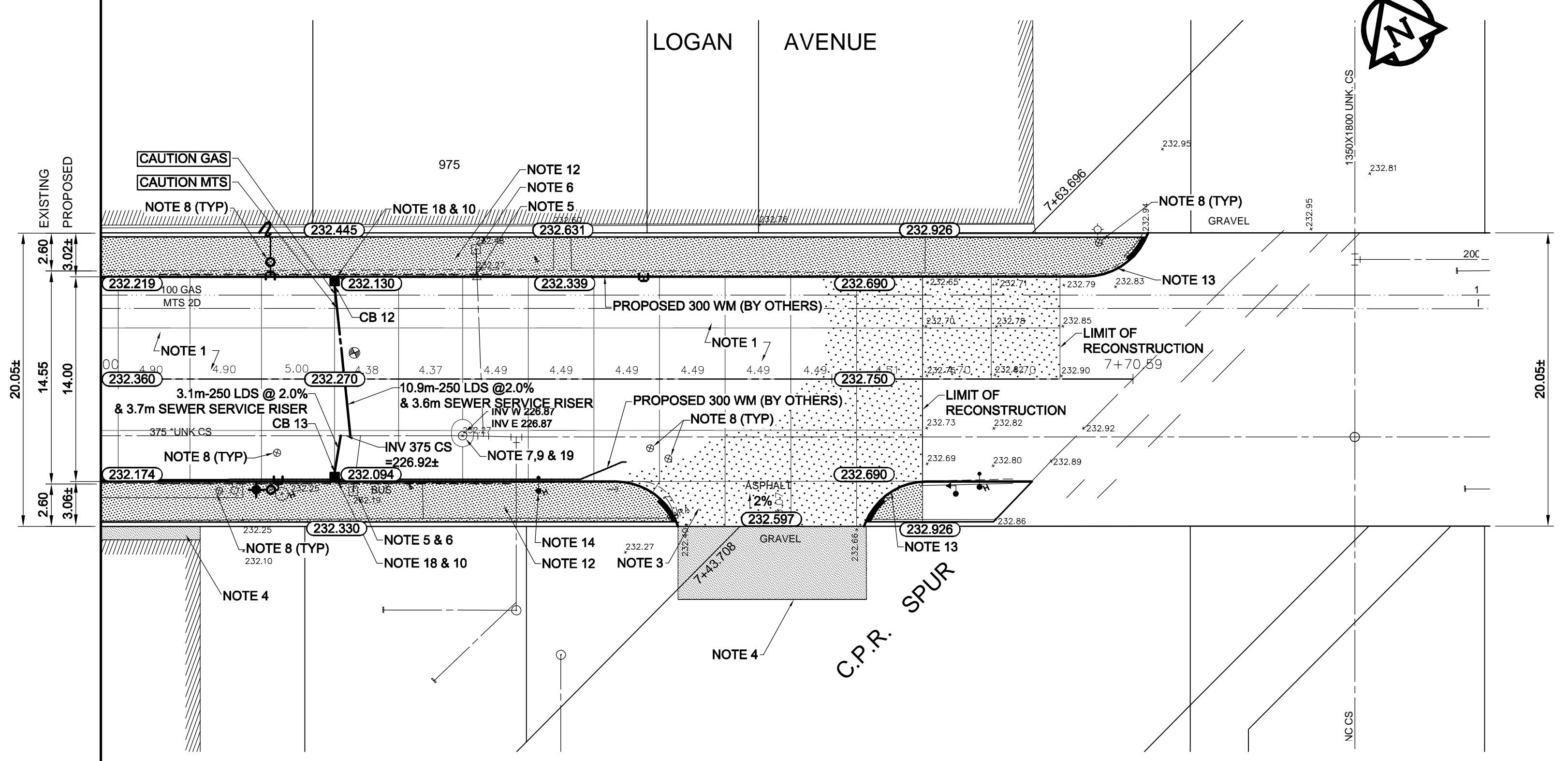


**TYPICAL CROSS SECTION**  
N.T.S.

CB TABLE - COMBINED SEWER				
DESCRIPTION	RIM ELEV.	INVERT		
		EAST	WEST	NORTH SOUTH
CB 12	232.130			231.080
CB 13	232.094		231.040	

- REFERENCE NOTES**
- PAVEMENT DIMENSIONS ARE TO BACK OF CURB
  - BASELINE IS CENTRELINE OF RIGHT-OF-WAY
  - PROPERTY LINES OBTAINED FROM THE CITY OF WINNIPEG L.B.I.S., AND NO SCALE FACTOR WAS APPLIED
  - REFER TO AECOM FIELD BOOK NO. 4703

- CONSTRUCTION NOTES**
- REMOVE EXISTING PAVEMENT AND CONSTRUCT NEW 230mm PLAIN DOWELLED CONCRETE PAVEMENT
  - CONSTRUCT NEW 200mm PLAIN DOWELLED CONCRETE PAVEMENT
  - CONSTRUCT NEW 200mm REINFORCED CONCRETE PAVEMENT
  - CONSTRUCT NEW ASPHALTIC CONCRETE OVERLAY
  - ABANDON EXISTING DRAINAGE INLET
  - REMOVE EXISTING CATCHBASIN AND ABANDON EXISTING LEAD
  - ADJUST EXISTING CATCHBASIN/Manhole FRAME AND COVER
  - ADJUST EXISTING WATERMAIN VALVE BOX TO GRADE
  - INSTALL NEW 50mm CAST IRON RISER RING
  - INSTALL 150mm SUBDRAIN 12m ON EACH SIDE OF CATCHBASIN
  - ADJUST EXISTING CURB TOP TO GRADE
  - CONSTRUCT NEW MONOLITHIC BARRIER CURB (180mm HT.) AND 100mm CONCRETE SIDEWALK
  - CONSTRUCT NEW MODIFIED BARRIER CURB (180mm HT. INTEGRAL)
  - REMOVE EXISTING HYDRO POLE (BY OTHERS)
  - RELOCATED EXISTING CHAINLINK FENCE
  - REMOVE EXISTING ADVERTISING SIGN (BY OTHERS)
  - ADJUST EXISTING HYDRO MANHOLE (BY OTHERS)
  - INSTALL NEW CATCHBASIN (SD024) AND CONNECT NEW 250mm LEAD TO EXISTING 375 COMBINED SEWER
  - SUPPLY AND INSTALL NEW FRAME AND COVER (AP004/AP005)



**METRIC**  
WHOLE NUMBERS INDICATE MILLIMETRES  
DECIMALIZED NUMBERS INDICATE METRES



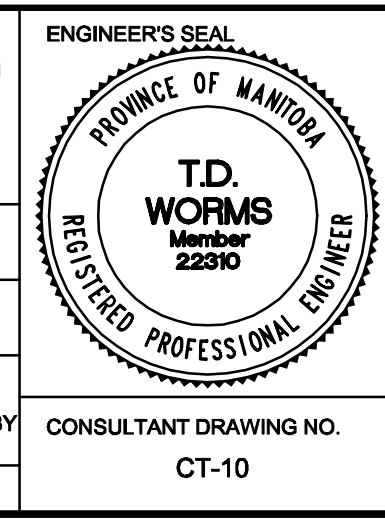
EXISTING	LEGEND - PLAN	PROPOSED	EXISTING	LEGEND - PLAN	PROPOSED	EXISTING	LEGEND - PROFILE	PROPOSED
150 mm W.M.	WATERMAIN	150 mm W.M.	HYDRO	CONCRETE	CONCRETE	---	C PROFILE	---
300mm L.D.S.	LAND DRAINAGE SEWER	300mm L.D.S.	ASPHALT	ASPHALT	ASPHALT	---	NORTH/WEST GUTTER	---
250mm W.W.S.	WASTEWATER SEWER	250mm W.W.S.	PROPERTY LINE	PROPERTY LINE	PROPERTY LINE	---	SOUTH/EAST GUTTER	---
MANHOLE	MANHOLE	MANHOLE	SURVEY BAR	SURVEY BAR	SURVEY BAR	---	N/W PROPERTY LINE	---
CATCH BASIN	CATCH BASIN	CATCH BASIN	ELEVATION	ELEVATION	ELEVATION	---	S/E PROPERTY LINE	---
CURB INLET	CURB INLET	CURB INLET	TREE	TREE	TREE	---		
JUNCTIONS	JUNCTIONS	JUNCTIONS	SIDEWALK RAMP	SIDEWALK RAMP	SIDEWALK RAMP	---		
CULVERT	CULVERT	CULVERT	CONCRETE SIDEWALK	CONCRETE SIDEWALK	CONCRETE SIDEWALK	---		
GAS	GAS	GAS	FENCE	FENCE	FENCE	---		

**LOCATION APPROVED UNDERGROUND STRUCTURES**

SUPV. U/G STRUCTURES COMMITTEE DATE

**NOTE:**  
LOCATION OF UNDERGROUND STRUCTURES AS SHOWN ARE BASED ON THE BEST INFORMATION AVAILABLE, BUT NO GUARANTEE IS GIVEN THAT ALL EXISTING UTILITIES ARE SHOWN OR THAT THE GIVEN LOCATIONS ARE EXACT. CONFIRMATION OF EXISTENCE AND EXACT LOCATION OF ALL SERVICES MUST BE OBTAINED FROM THE INDIVIDUAL UTILITIES BEFORE PROCEEDING WITH CONSTRUCTION.

B.M. 36-020	S.E. Cor. Logan Ave. & Trinity St., Tbt. in N. Conc. 1dn. of No. 936 Logan Ave., 3 m W. & 0.3 m below window of N.E. Cor. of Bldg.	ELEV. 232.294	
DESIGNED BY	TDW	CHECKED BY	KWR
DRAWN BY	PAAP	APPROVED BY	KWR
HOR. SCALE:	1:250	RELEASED FOR CONSTRUCTION BY:	B.S. KIBBINS
VERTICAL:	1:10	ORIGINAL SIGNED BY:	B.S. KIBBINS
ISSUED FOR TENDER	2011/05/27	DATE	2011/05/27
ISSUED FOR REVIEW	2011/05/13	DATE	2011/05/13
NO. REVISIONS		DATE	



**THE CITY OF WINNIPEG**  
PUBLIC WORKS DEPARTMENT  
ENGINEERING DIVISION

**LOGAN AVENUE**  
McPHILLIPS STREET TO TRINITY STREET  
PAVEMENT RECONSTRUCTION

PLAN/PROFILE  
STATION 7+00 TO TRINITY STREET (RAILWAY)

CITY DRAWING NUMBER  
P-3326-10  
SHEET 10 OF 10

CONSULTANT DRAWING NO.  
CT-10