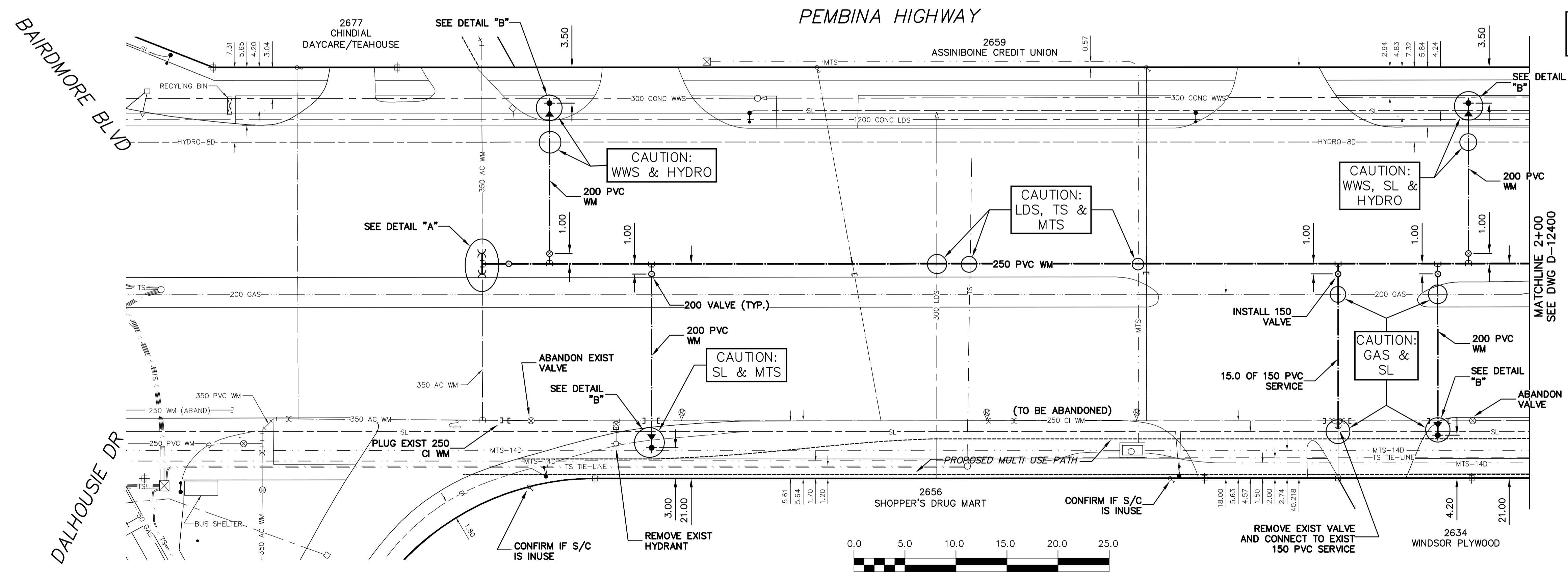


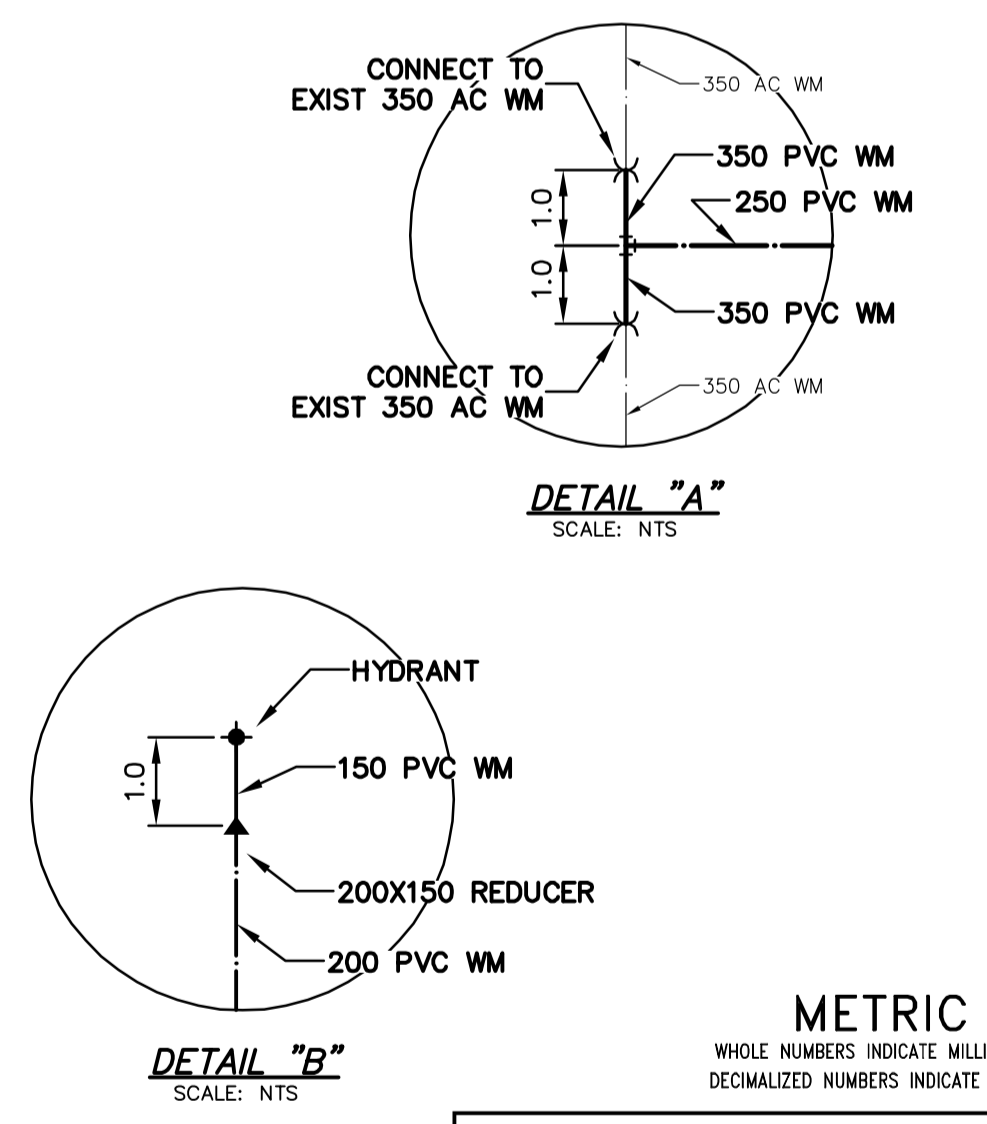
- CONSTRUCTION NOTES**
1. EXPOSE EXISTING WATERMAIN & CONFIRM INVERTS PRIOR TO CONSTRUCTION.
  2. LOCATION OF ALL SERVICES TO BE CONFIRMED IN THE FIELD.
  3. INSTALL WATERMAIN BY TRENCHLESS METHODS.
  4. TRENCHES AND EXCAVATIONS WITHIN 1 METRE OF A PAVED AREA INCLUDING SIDEWALKS SHALL BE CLASS 3 BACKFILL.
  5. ALL MATERIALS SHALL CONFORM TO THE CITY OF WINNIPEG STANDARD CONSTRUCTION SPECIFICATIONS.
  6. MINIMUM COVER TO TOP OF WATERMAIN SHALL BE 2.4 m.
  7. REPLACE ALL EXISTING LEAD SERVICES FROM PROPOSED WATERMAIN TO R.
  8. NOTIFY ALL AFFECTED RESIDENTS AND BUSINESSES 24 HOURS IN ADVANCE OF ANY WATER SHUTDOWNS OR DISRUPTION OF SERVICE.

WATER SERVICE INFORMATION					
ADDRESS	SIZE(mm) & TYPE (STREET)	SIZE(mm) & TYPE (PROP.)	SHORT & LONG MEASUREMENT	CORP. LOCATION	REMARKS
2615 PEMBINA HWY COMMERCIAL	50 COPPER	50 COPPER	270.25>NNL BRAIDMORE	3.2 N S/C	RECONNECT SERVICE
2627 PEMBINA HWY COMMERCIAL	50 COPPER	50 COPPER	186.28>NNL BRAIDMORE	19.2 N S/C	RECONNECT SERVICE
2634 PEMBINA HWY COMMERCIAL	25 COPPER	25 COPPER	122.34>NNL BRAIDMORE	2.8 S S/C	RECONNECT SERVICE
2645 PEMBINA HWY COMMERCIAL	25 COPPER	25 COPPER	149.92>NNL BRAIDMORE	2.05 N S/C	RECONNECT SERVICE
2656 PEMBINA HWY COMMERCIAL	150 PVC	150 PVC	72.79>NNL BRAIDMORE	OPP VALVE	RECONNECT SERVICE
2656 PEMBINA HWY COMMERCIAL	-	-	6.60>NNL BRAIDMORE	-	CONFIRM IF IN USE
2659 PEMBINA HWY COMMERCIAL	50 COPPER	50 COPPER	91.29>NNL BRAIDMORE	OPP S/C	RECONNECT SERVICE
2659 PEMBINA HWY COMMERCIAL	50 COPPER	50 COPPER	59.02>NNL BRAIDMORE	6.4 N S/C	CONFIRM IF IN USE
2677 PEMBINA HWY COMMERCIAL	50 COPPER	50 COPPER	8.12>NNL BRAIDMORE	OPP S/C	OUTSIDE RENEWAL LIMITS

\* SERVICES TO BE RENEWED TO R UPON CONFIRMATION BY THE CONTRACTOR OF EXISTING LEAD SERVICE.



NOTE: CHAINAGES SHOWN ARE ALONG E. R. OF PEMBINA HWY.



**WARNING**

IF POWER EQUIPMENT OR EXPLOSIVES ARE TO BE USED FOR EXCAVATION ON THIS PROJECT THE CONTRACTOR MUST:

- 1) NOTIFY THE GAS COMPANY OF THE PROPOSED LOCATION OF EXCAVATION.
- 2) TAKE PRECAUTION TO AVOID DAMAGE TO GAS COMPANY INSTALLATIONS.

SEE PROVINCIAL REGULATION 210/72 FOR DETAILS

200 WM	WATERMAIN	200 WM	SL, HYDRO	150 WM	WATERMAIN	150 WM
⊕	HYDRANT	⊕	MTS	⊕	HYDRANT	⊕
⊕	VALVE	⊕	TRAFFIC SIGNALS	⊕	VALVE	⊕
⊕	525 LDS	⊕	50 GAS	⊕	525 LDS	⊕
⊕	375 WWS	⊕	SURVEY BAR	⊕	375 WWS	⊕
○	MANHOLE	○	FENCE	○	MANHOLE	○
□	CATCH BASIN	□	POLE - HYDRO, MTS	□	CATCH BASIN	□
▽	CURB INLET	▽	CURB STOP	▽	CURB INLET	▽
△	REDUCER	△	GUY ANCHOR	△	REDUCER	△
X	COUPLER	X	LIGHT STANDARD	X	COUPLER	X
⊕	ANODE	⊕	TREE	⊕	ANODE	⊕
---	EXISTING	---	LEGEND-PLAN	---	EXISTING	---
---	LEGEND-PLAN	---	LEGEND-PLAN	---	LEGEND-PROFILE	---
---	PROPOSED	---	PROPOSED	---	PROPOSED	---

LOCATION APPROVED UNDERGROUND STRUCTURES		B.M. ELEV.	FIELD BOOK #:
SUPV. U/G STRUCTURES COMMITTEE <td>DATE <td>POSTED TO LBIS <td></td> </td></td>	DATE <td>POSTED TO LBIS <td></td> </td>	POSTED TO LBIS <td></td>	
NOTE: LOCATION OF UNDERGROUND STRUCTURES AS SHOWN ARE BASED ON THE BEST INFORMATION AVAILABLE BUT NO GUARANTEE IS GIVEN THAT ALL EXISTING UTILITIES ARE SHOWN OR THAT THE GIVEN LOCATIONS ARE EXACT. CONFIRMATION OF EXISTENCE AND EXACT LOCATION OF ALL SERVICES MUST BE OBTAINED FROM THE INDIVIDUAL UTILITIES BEFORE PROCEEDING WITH CONSTRUCTION.			
NO.	REVISIONS	DATE	BY
1	ADJUSTED HYDRANTS FOR PROPOSED MULTI USE PATH	11.05.12	CJH

CITY OF WINNIPEG WATER AND WASTE ENGINEERING DIVISION			
DESIGNED BY	DB	CHECKED BY	KZ
DRAWN BY	CJH	APPROVED BY	KZ
HOR. SCALE	1:250	RELEASED FOR CONSTRUCTION	
VERTICAL	1:50	K.R. ZUREK	
		DATE	MAY 12, 2011

ENGINEER'S SEAL

ORIGINAL SIGNED BY K.R. ZUREK MAY 12, 2011

BID OPPORTUNITY: 373-2011  
FILENAME: 12399.dwg  
PLOT DATE: 2011 05 12

**THE CITY OF WINNIPEG WATER AND WASTE DEPARTMENT**

2011 WATERMAIN RENEWALS CONTRACT NO. 17

**PEMBINA HIGHWAY**  
DALHOUSIE DRIVE TO 100 N OF DALHOUSIE DRIVE

SHEET 1 OF 5  
CITY DRAWING NUMBER D-12399