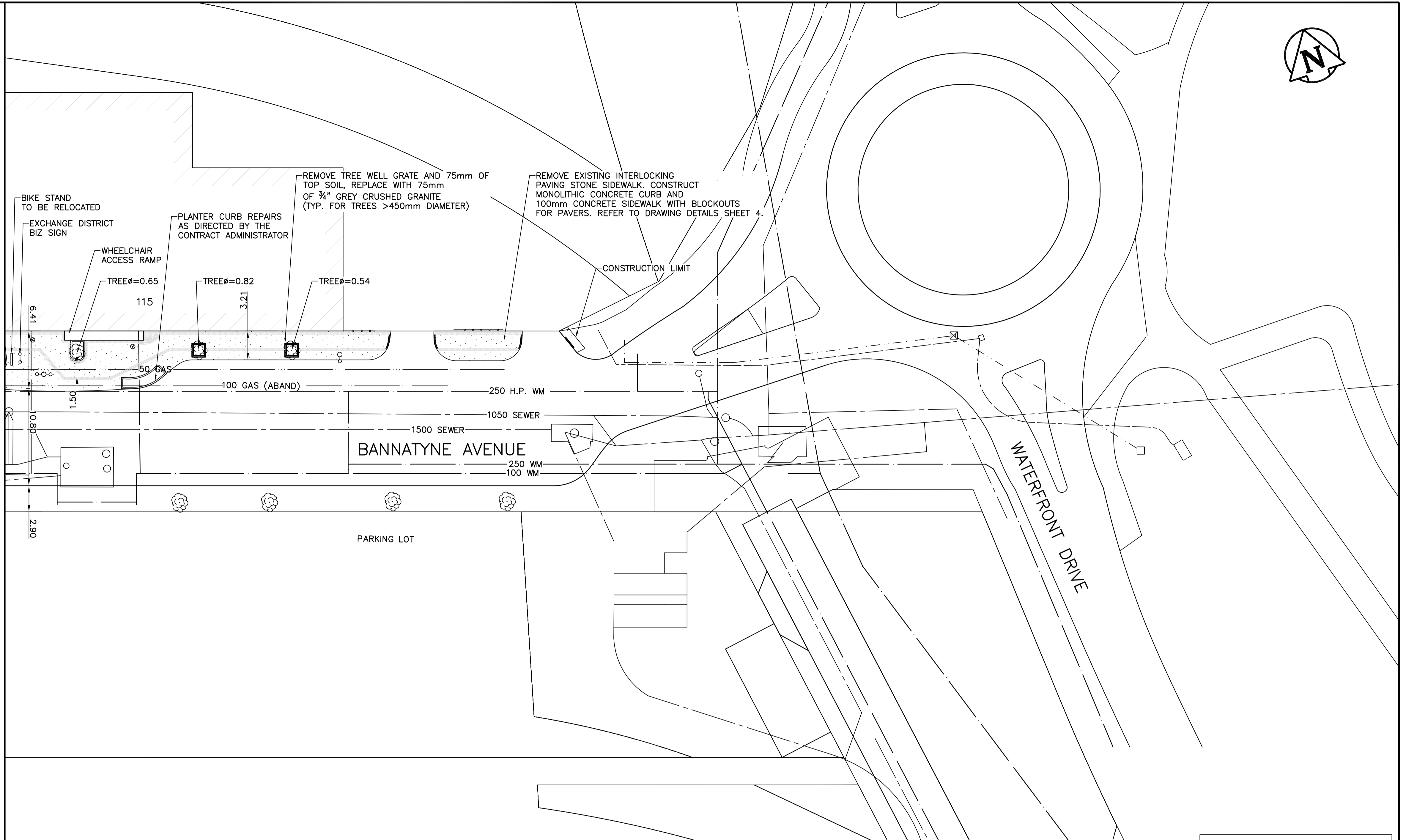


MATCHLINE STA 4+00



- CONSTRUCTION NOTES**
- 1) CURB REPLACEMENT AS DIRECTED BY THE CONTRACT ADMINISTRATOR
 - 2) ALL STREET RADIUS CURB UNDER 15M RADIUS SHALL BE REPLACED AS MODIFIED OR AS DIRECTED BY THE CONTRACT ADMINISTRATOR
 - 3) PAVEMENT REPAIRS SHOWN ARE ONLY A REPRESENTATIVE SAMPLE OF THE TENDERED QUANTITIES
 - 4) CONTRACTOR SHALL BE RESPONSIBLE FOR REMOVAL, STORAGE, AND REINSTALLATION OF ALL STREET FURNITURE. ALL STREET FURNITURE TO BE REINSTALLED IN ORIGINAL LOCATION.
 - 5) REMOVE FORMER PARKING METERS BEING USED AS BIKE POSTS.

WARNING

IF POWER EQUIPMENT OR EXPLOSIVES ARE TO BE USED FOR EXCAVATION ON THIS PROJECT THE CONTRACTOR MUST:

- 1) OBTAIN CLEARANCE FROM THE GAS UTILITY PRIOR TO EXCAVATION.
- 2) TAKE PRECAUTION TO AVOID DAMAGE TO GAS UTILITY INSTALLATIONS.

SEE PROVINCIAL REGULATION 210/72 FOR DETAILS

METRIC
WHOLE NUMBERS INDICATE MILLIMETRES
DECIMALIZED NUMBERS INDICATE METRES

BID OPPORTUNITY NO. 375-2011

⊕	HYDRANT	◆	---	LDS/WWS	---	☐	PAY STATION	
⊗	VALVE	●	---	WATERMAIN	---			
⊖	CURB STOP	◆	---	GAS	---			
▬	CONCRETE SIDEWALK	▬	---	TRAFFIC SIGNALS	---			
○	O.L.S.	●	---	CONCRETE CURB RENEWAL	---			
○	DECORATIVE LIGHT	●	---	ELEVATIONS	[231.000]			
○	MANHOLE	●	---	PROPERTY LINE	---			
□	CATCH BASIN	■	---	SURVEY BAR	---			
△	CURB INLET	▲	---	GEODETIC BENCH MARK	---			
☆	HYDRO POLE	◆	---	RAMP CURB	---			
○	TRAFFIC SIGNAL POLE	◆	---					
---	EXISTING	---	---	PROPOSED	---	---	---	---

LOCATION APPROVED UNDERGROUND STRUCTURES

SUPR. U/G STRUCTURES COMMITTEE DATE

NOTE:
LOCATION OF UNDERGROUND STRUCTURES AS SHOWN ARE BASED ON THE BEST INFORMATION AVAILABLE. BUT NO GUARANTEE IS GIVEN THAT ALL EXISTING UTILITIES ARE SHOWN OR THAT THE GIVEN LOCATIONS ARE EXACT. CONFIRMATION OF EXISTENCE AND EXACT LOCATION OF ALL SERVICES MUST BE OBTAINED FROM THE INDIVIDUAL UTILITIES BEFORE PROCEEDING WITH CONSTRUCTION.

B.M. ELEV.	GBM 35-006		
	232.063		
NO.	REVISIONS	DATE	BY

ENGINEERING DIVISION TECHNOLOGY SERVICES BRANCH 106 - 1155 PACIFIC AVE			
DESIGNED BY	L.B.	CHECKED BY	C.T.
DRAWN BY	R.M.C.	APPROVED BY	S.P.
HOR. SCALE:	1 : 250	VERTICAL:	N.T.S.
DATE	2011/06/02		

ENGINEER'S SEAL

THE CITY OF WINNIPEG
PUBLIC WORKS DEPARTMENT

BANNATYNE AVENUE
FROM MAIN STREET TO WATERFRONT DRIVE
SIDEWALK RENEWAL AND ASSOCIATED WORKS
STA. 4+00 TO LIMIT OF CONSTRUCTION

CITY DRAWING NUMBER SE-11-26
SHEET 3 OF 4
3