

2 Timber Curb/Retaining Wall Step Down
L-9 Scale: 1:10

Note:
 Number of courses may vary (see Grading Drawing)

Courses to be LEVEL.

End Cut preservative to be used in accordance with Timber Supplier Instructions

Bottom course to be minimum 1/2 buried into subgrade. (below safety surfacing and drainage course (if required))

150 mm x 150 mm PT Timber. 8 mm chamfer on both top edges. Joints at corners to be half lap. Joints in straight runs lap with min 90 cm overlap. Min length of Timber is 120 cm. Used longest lengths possible. Layers of timber below the topmost layer to be offset 10 mm to the outside.

19mm dia. rebar 50 cm in length placed in predrilled holes 1200 mm o.c. and at all lap and half lap joints.

32 mm x 150 mm angelim pedra Cap. 8 mm chamfer on both top and bottom edges. Bark side to be up. Joints to be lapped with Timber below.

75 mm ø Weeping tile or 150 mm depth multi flo connected into subsurface drain system or drained to air.

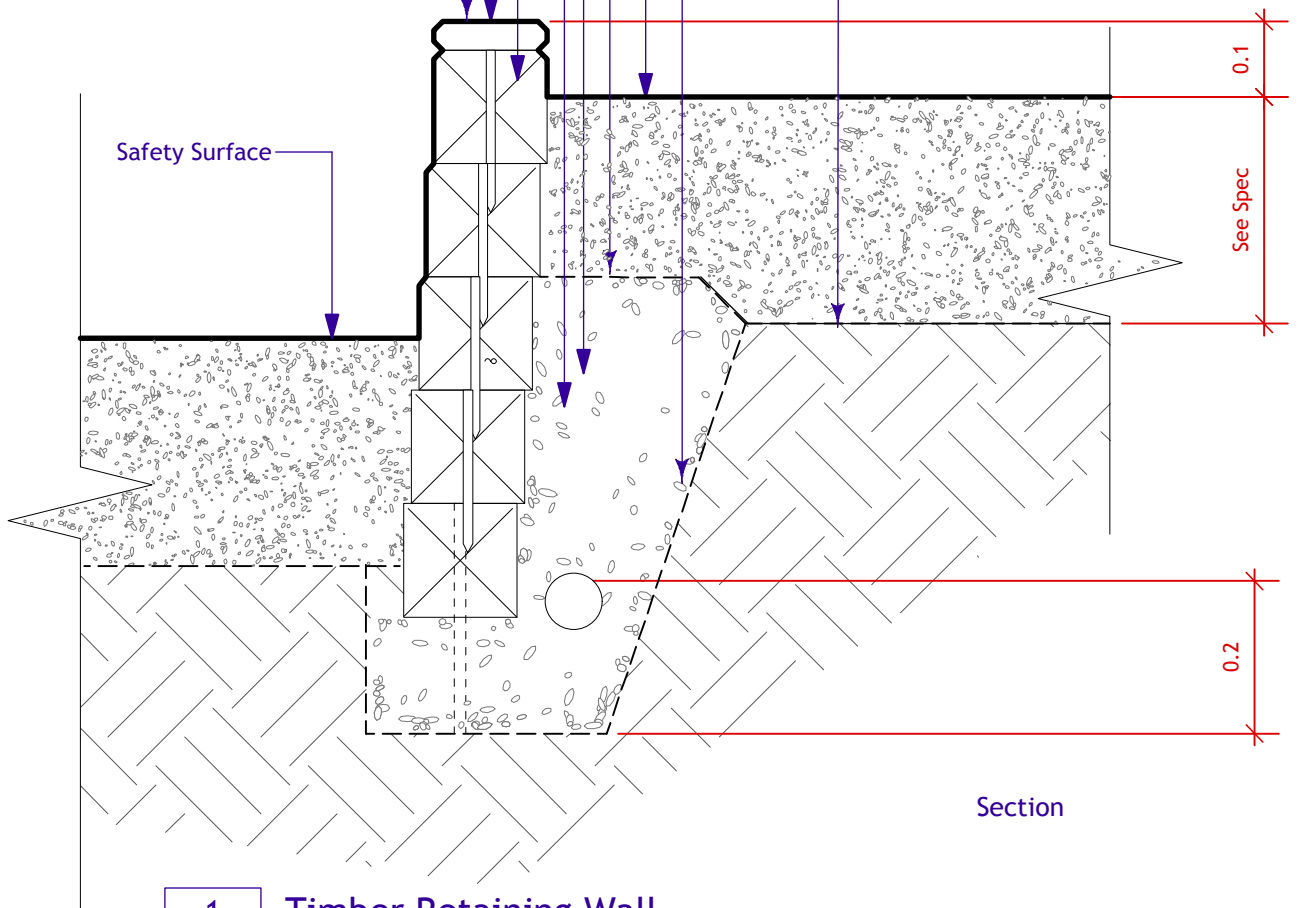
Compacted 20 mm ø down Limestone

Filter fabric

Safety Surface

Filter fabric

Filter fabric



1 Timber Retaining Wall
L-9 Scale: 1:10

No.	Date	Issue Notes
C	4/26/11	For Bid Opp

Sir William Churchill Park
 Play Curb Details 2

