

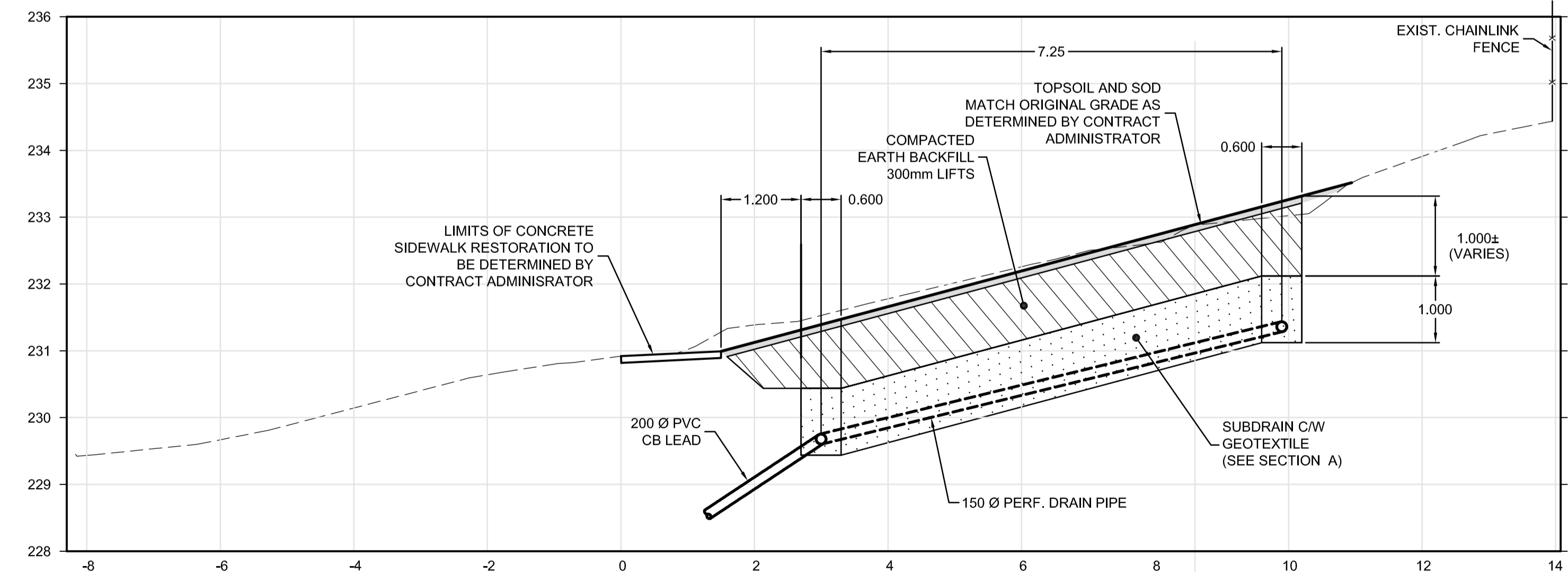
**NOTES:**

1. THE CONTRACTOR WILL OBTAIN UTILITY CLEARANCES FOR UNDERGROUND PLANT IN THE VICINITY OF THE WORK BEFORE STARTING CONSTRUCTION.
2. THE CONTRACTOR WILL ARRANGE AND PAY FOR HYDRO-EXCAVATION (SOFT DIGGING) TO LOCATE AND VERIFY THE LOCATION AND DEPTH OF EXISTING SERVICES, UTILITIES AND STRUCTURES.
3. THE CONTRACTOR WILL BE REQUIRED TO MAINTAIN ANY SERVICES, UTILITIES, AND STRUCTURES FROM DAMAGE AS A RESULT OF CONSTRUCTION ACTIVITIES.
4. THE CONTRACTOR WILL MAKE ARRANGEMENTS WITH THE UTILITY OWNER TO REPAIR EXISTING SERVICES, UTILITIES AND STRUCTURES ADJACENT TO THE WORK THAT ARE DAMAGED DUE TO CARELESSNESS DURING CONSTRUCTION.
5. THE CONTRACTOR WILL NOTIFY THE CONTRACT ADMINISTRATOR IMMEDIATELY OF EXISTING SERVICES, UTILITIES, STRUCTURES AND OBSTRUCTIONS THAT ARE NOT SHOWN ON THE DRAWINGS OR ARE IN DIFFERENT LOCATIONS THAN SHOWN ON THE DRAWINGS AND ARE IN CONFLICT WITH THE WORK.
6. PLACE TOPSOIL & SOD ON AREAS DAMAGED BY CONSTRUCTION ACTIVITIES.

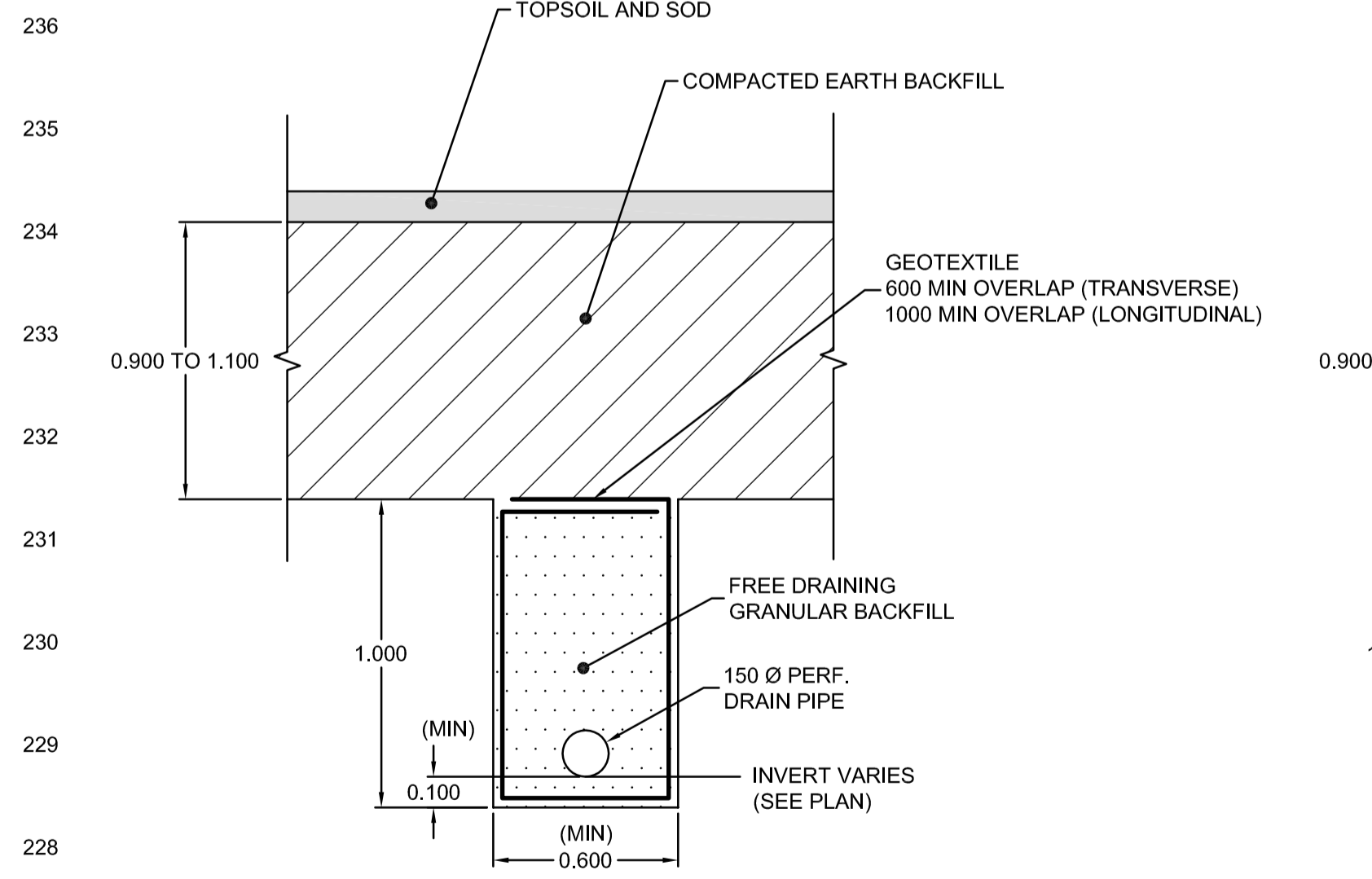
**APEGM**  
 Certificate of Authorization  
**Dillon Consulting Limited (MB)**  
 No. 1789 Date: MAY 14, 2011

**KING EDWARD ST NORTHBOUND**

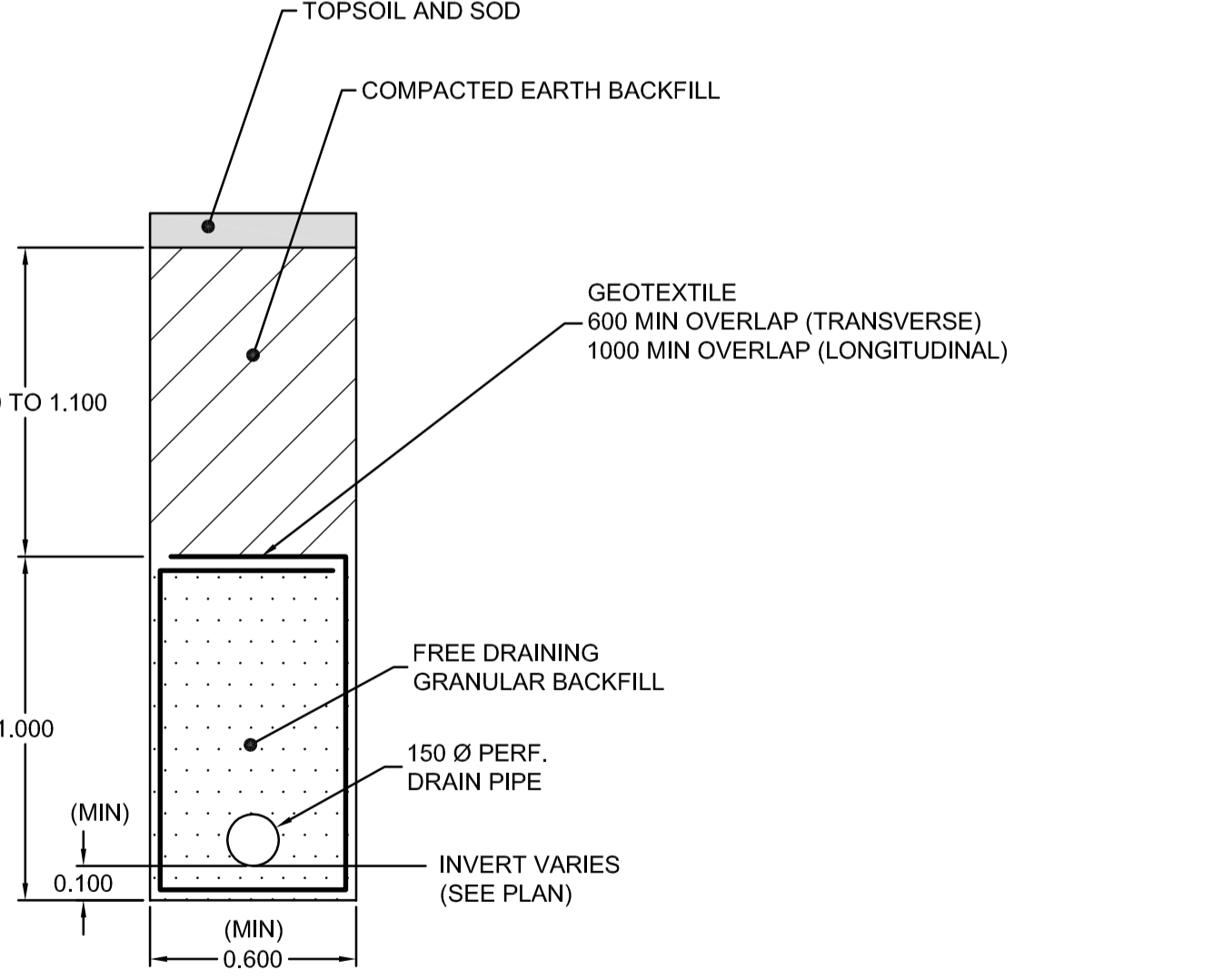
**PLAN**  
SCALE 1:100



**SECTION 1**  
SCALE 1:60



**SECTION A**  
SCALE 1:20



**SECTION B**  
SCALE 1:20

150 WM	WATERMAIN	150 WM	HYDRO	HYDRO	HYDRO	B.M. N: 5531849.011 E: 628727.609	DESIGNED BY	MVH
300 LDS	LAND DRAINAGE SEWER	300 LDS	300 LDS	WATERMAIN	150 mm W.M.		DRAWN BY	MRD
250 WWS	WASTE WATER SEWER	250 WWS	250 WWS	HYDRANT	+		CHECKED BY	JAB
○	MANHOLE	●	●	VALVE	×		REVIEWED BY	SSR
□	CATCH BASIN	■	■	LAND DRAINAGE SEWER	300 mm L.D.S.			
▽	CURB INLET	▼	▼	WASTE WATER SEWER	250 mm W.W.S.			
—	JUNCTIONS	—	—	PROPERTY LINE	—			
—	CULVERT	—	—	SURVEY BAR	—			
—	100 GAS	—	—	CURB RAMP	—			
—	EXISTING	—	—	LEGEND-PLAN	—			
—	LEGEND-PLAN	—	—	PROPOSED	—			

1	ISSUED FOR TENDER	5-14-11	MRD
0	ISSUED FOR REVIEW	5-12-11	MRD
NO.	REVISIONS	DATE	BY

DATE	MAY 2011
------	----------

RELEASED FOR CONSTRUCTION

**TREK GEOTECHNICAL**

**DILLON CONSULTING**

ENGINEER'S SEAL

PROVINCE OF MANITOBA  
**M. J. VAN HELDEN**  
 Member 24729  
 REGISTERED PROFESSIONAL ENGINEER

ENGINEER'S SEAL

PROVINCE OF MANITOBA  
**M.R. DOUCET**  
 Member 22306  
 REGISTERED PROFESSIONAL ENGINEER

CONSULTANT PROJECT NO.  
11-4559

**THE CITY OF WINNIPEG**  
 PUBLIC WORKS DEPARTMENT

Winnipeg

2011 BRIDGE MAINTENANCE ROUTE 90 UNDERPASS AT CPR MAINLINE AND CNR OAKPOINT SUB.

CITY DRAWING NUMBER U228-11-01 SHEET 1 OF 1

BID OPP. NO. 395-2011

SLOPE STABILIZATION PLANS AND DETAILS