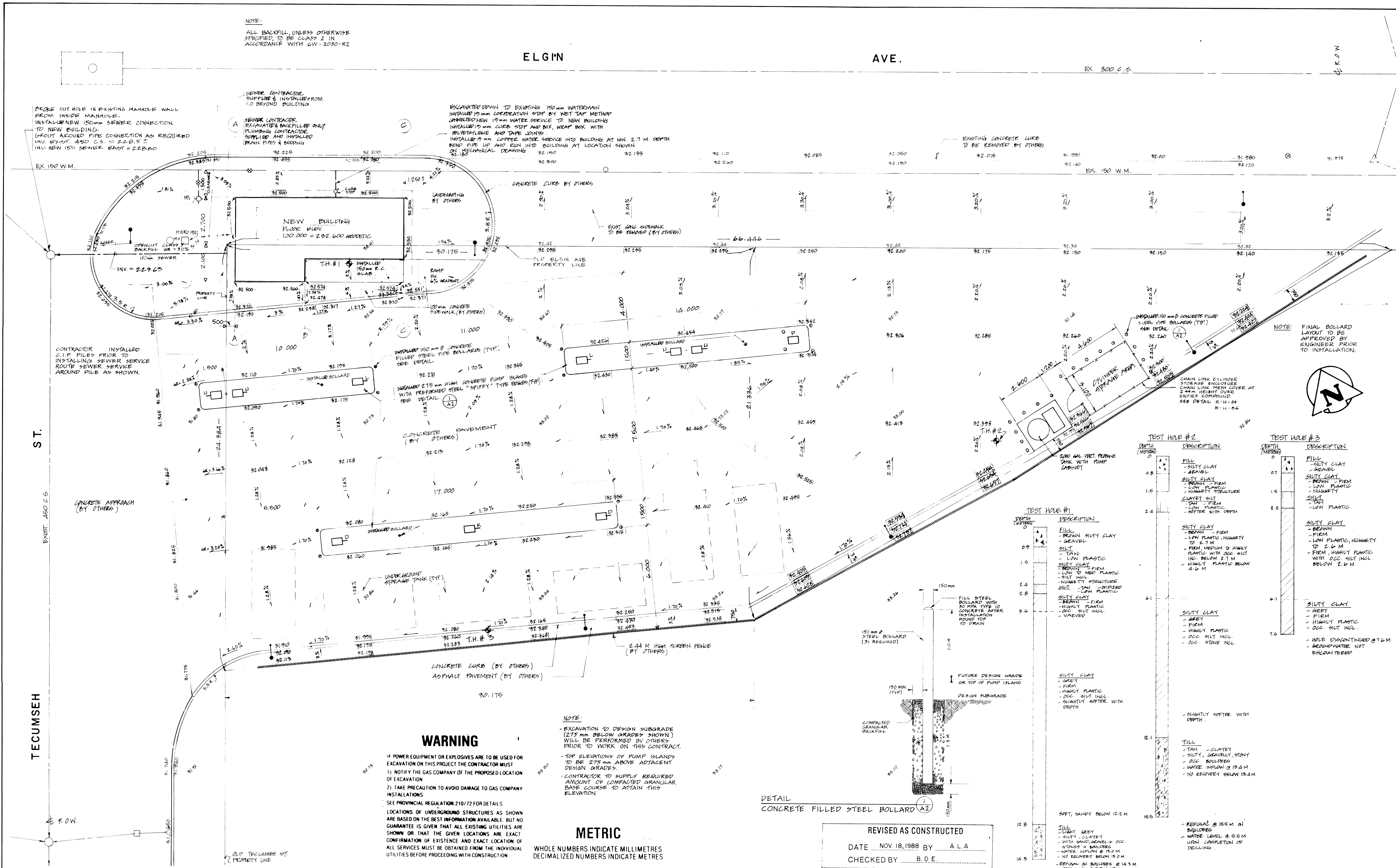


NOTE:
ALL BACKFILL, UNLESS OTHERWISE SPECIFIED, TO BE CLASS 2 IN ACCORDANCE WITH CW-2070-R2

ELGIN AVE.

EX. 300 C.S.

R.O.W.



WARNING

IF POWER EQUIPMENT OR EXPLOSIVES ARE TO BE USED FOR EXCAVATION ON THIS PROJECT THE CONTRACTOR MUST:
1) NOTIFY THE GAS COMPANY OF THE PROPOSED LOCATION OF EXCAVATION
2) TAKE PRECAUTION TO AVOID DAMAGE TO GAS COMPANY INSTALLATIONS
SEE PROVINCIAL REGULATION 210/72 FOR DETAILS
LOCATIONS OF UNDERGROUND STRUCTURES AS SHOWN ARE BASED ON THE BEST INFORMATION AVAILABLE, BUT NO GUARANTEE IS GIVEN THAT ALL EXISTING UTILITIES ARE SHOWN OR THAT THE GIVEN LOCATIONS ARE EXACT
CONFIRMATION OF EXISTENCE AND EXACT LOCATION OF ALL SERVICES MUST BE OBTAINED FROM THE INDIVIDUAL UTILITIES BEFORE PROCEEDING WITH CONSTRUCTION

NOTE:
- EXCAVATION TO DESIGN SUBGRADE (275 mm BELOW GRADES SHOWN) WILL BE PERFORMED BY OTHERS PRIOR TO WORK ON THIS CONTRACT.
- TOP ELEVATIONS OF PUMP ISLANDS TO BE 275 mm ABOVE ADJACENT DESIGN GRADES.
- CONTRACTOR TO SUPPLY REQUIRED AMOUNT OF COMPACTED GRANULAR BASE COURSE TO ATTAIN THIS ELEVATION.

METRIC

WHOLE NUMBERS INDICATE MILLIMETRES
DECIMALIZED NUMBERS INDICATE METRES

REVISED AS CONSTRUCTED

DATE NOV. 18, 1988 BY A.L.A.
CHECKED BY B.D.E.

EXISTING	LEGEND	PROPOSED	EXISTING	LEGEND	PROPOSED
○	WATERMAIN	○	○	COMBINED SEWER	○
□	MANHOLE	□	□	CATCH BASIN	□
◇	CATCH BASIN INLET	◇	◇	VALVE	◇
○	HYDRANT	○	○	ELEVATION	○
○	LAMP STANDARD	○	○	SIGN	○

RELEASED FOR CONSTRUCTION			
DIRECTOR OF CIVIC PROPERTIES		Professional Engineer	
DIRECTOR OF OPERATIONS		Professional Engineer	
BENCH MARK: METROPOLITAN 96-209 TRAIL IN W. WALL OF THE CITY OF WINNIPEG PUBLIC WORKS SHOPS, SOUTHWEST CORNER OF PACIFIC AVE AND TECUMSEH STREET, 2.6M SOUTH OF NORTHWEST CORNER OF BUILDING. ELEVATION = 232.501 M.			
NO.	REVISIONS	DATE	BY
3	REVISED LAMP STD. & BOLLARD	2-12-88	B.D.E.
2	REVISED TO AS BUILT	18.11.88	B.D.E.
1	REVISED FOR P.D. 86-149	8-06-86	N.S./B.E.

DESIGNED BY	B.D.E.	CHECKED BY	D.J.S.
DRAWN BY	A.L.A.	DATE	JUNE 23, 1986
SCALE:	1:100M.	APPROVED BY	
DETAIL:		DATE	20 6 86

ENGINEER'S SEAL
D.J.S.
D.J. SCOTT
REGISTERED ENGINEER
CONSULTANT PLAN NO. A2-67-349

THE CITY OF WINNIPEG
CIVIC PROPERTIES DEPARTMENT
CENTRAL YARD REORGANIZATION PROJECT
FIELD BOOK 2248
FUEL STATION
SITE PLAN
PLAN NO. A2-67-349

105 TECUMSEH I.D.A. 96.117
 PROJECT NO. 8-2
 SHEET NO. 1/17
 DESCRIPTION: Site Plan