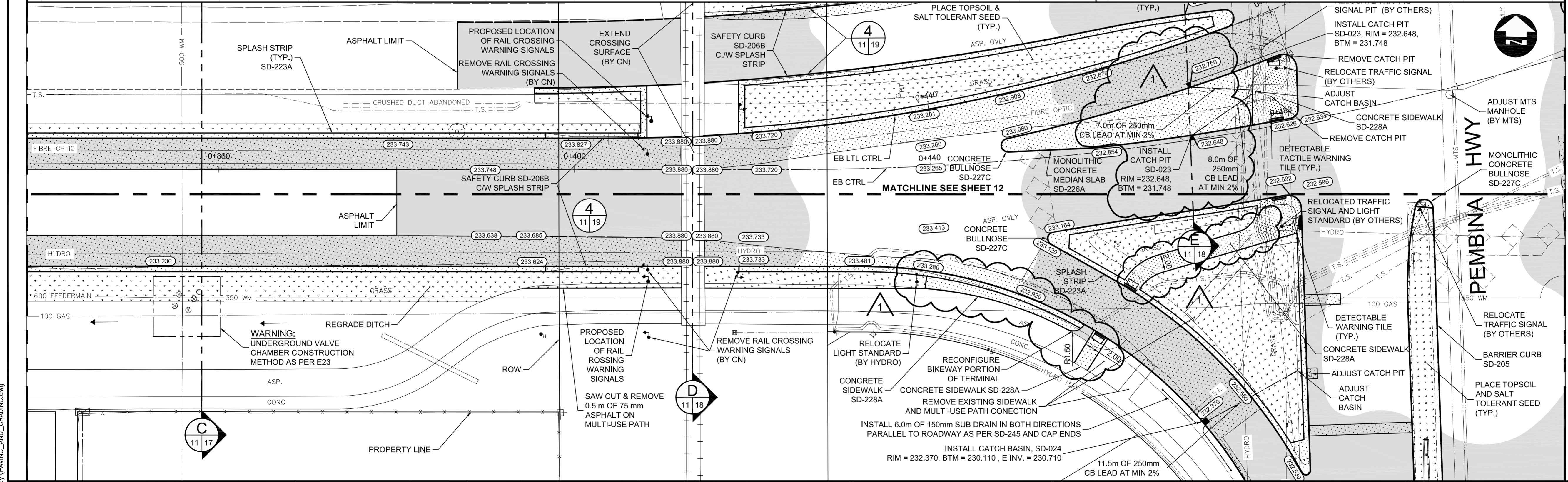


- CONSTRUCTION NOTES:**
1. THE CONTRACTOR MUST COMPLY WITH ALL SPECIFICATIONS OUTLINED IN E23 - OPERATING CONSTRAINTS FOR WORK IN CLOSE PROXIMITY TO FEEDERMANS.
  2. PROPOSED WATERMAIN RENEWAL TO BE COMPLETED BY OTHERS IN JUNE / JULY 2011.
  3. EXIST. ALUMINUM GUARDRAIL TO BE SALVAGED AND DELIVERED TO CITY YARD. IN ACCORDANCE WITH E21



**METRIC**  
WHOLE NUMBERS INDICATE MILLIMETRES  
DECIMALIZED NUMBERS INDICATE METRES

- WARNING**
- IF POWER EQUIPMENT OR EXPLOSIVES ARE TO BE USED FOR EXCAVATION ON THIS PROJECT THE CONTRACTOR MUST:
1. NOTIFY THE GAS COMPANY OF THE PROPOSED LOCATION OF EXCAVATION.
  2. TAKE PRECAUTION TO AVOID DAMAGE TO GAS COMPANY INSTALLATIONS SEE PROVINCIAL REGULATION 210/72 FOR DETAILS.
  3. OBTAIN EXCAVATION PERMITS PRIOR TO CONSTRUCTION.

150 WM	WATERMAIN	150 WM	HYDRO	HYDRO	150 mm W.M.	WATERMAIN	150 mm W.M.
+	HYDRANT	+	MTS	MTS	+	HYDRANT	+
+	VALVE	+	MTS	MTS	+	VALVE	+
+	300 LDS LAND DRAINAGE SEWER	+	MTS	MTS	+	300 mm L.D.S. LAND DRAINAGE SEWER	+
+	250 WWS WASTE WATER SEWER	+	MTS	MTS	+	250 mm W.W.S. WASTE WATER SEWER	+
○	MANHOLE	○	MTS	MTS	○	MANHOLE	○
□	CATCH BASIN	□	MTS	MTS	□	CATCH BASIN	□
▽	CURB INLET	▽	MTS	MTS	▽	CURB INLET	▽
+	JUNCTIONS	+	MTS	MTS	+	JUNCTIONS	+
+	CULVERT	+	MTS	MTS	+	CULVERT	+
+	100 GAS	+	MTS	MTS	+	100 GAS	+
+	EXISTING	+	MTS	MTS	+	EXISTING	+
+	LEGEND-PLAN	+	MTS	MTS	+	LEGEND-PROFILE	+

**UNDERGROUND STRUCTURES**

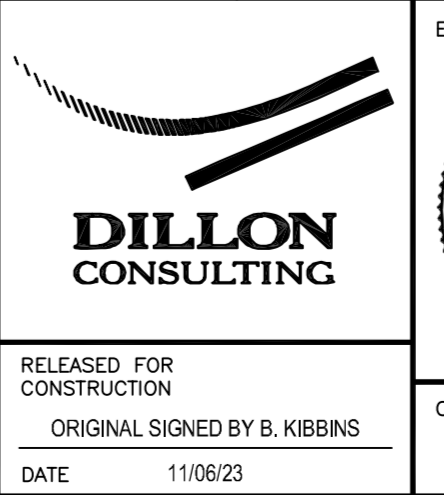
SUPPLY, U/G STRUCTURES COMMITTEE DATE

NOTE:  
LOCATION OF UNDERGROUND STRUCTURES AS SHOWN ARE BASED ON THE BEST INFORMATION AVAILABLE BUT NO GUARANTEE IS GIVEN THAT ALL EXISTING UTILITIES ARE SHOWN OR THAT THE GIVEN LOCATIONS ARE EXACT. CONFIRMATION OF EXISTENCE AND EXACT LOCATION OF ALL SERVICES MUST BE OBTAINED FROM THE INDIVIDUAL UTILITIES BEFORE PROCEEDING WITH CONSTRUCTION.

B.M. 654271 N 5517192.470 E 632610.651  
ELEV. 233.084

NO.	REVISIONS	DATE	BY
2	ISSUED FOR ADDENDUM #1	11/07/04	JNC
1	ISSUED FOR TENDER	11/06/23	JNC

DESIGNED BY	RTP
DRAWN BY	PMW
CHECKED BY	JNC
APPROVED BY	DPK
HOR. SCALE	1:250
VERTICAL	1:10
DATE	2011/06/23



**THE CITY OF WINNIPEG PUBLIC WORKS DEPARTMENT**

BISON DRIVE & PEMBINA HIGHWAY INTERSECTION IMPROVEMENTS

STA: 0+340 TO 0+505 EASTBOUND CONTROL LINE

CITY DRAWING NUMBER: P-3327-11  
SHEET 11 OF 24  
CONSULTANT DRAWING NUMBER

CONSULTANT PROJECT NUMBER: 11-4587

G:\CAD\114587\Contract\Curent\PAVING\_AND\_GRADING.dwg