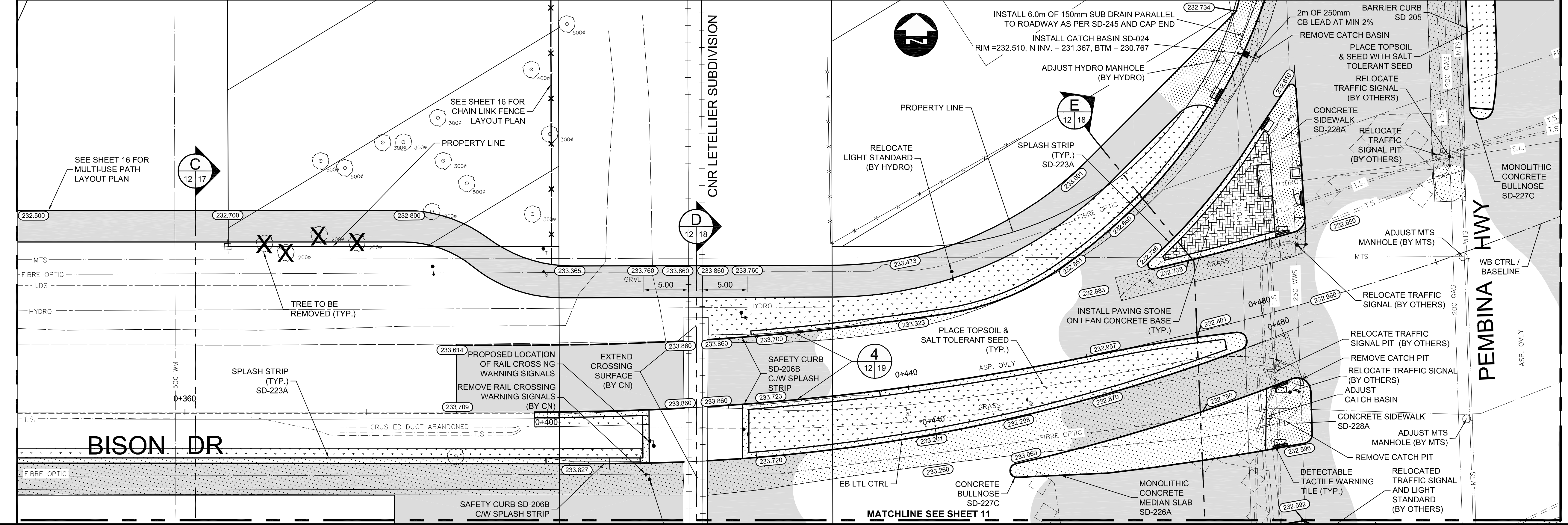


- CONSTRUCTION NOTES:**
1. THE CONTRACTOR MUST COMPLY WITH ALL SPECIFICATIONS OUTLINED IN E23 - OPERATING CONSTRAINTS FOR WORK IN CLOSE PROXIMITY TO FEEDERMAINS.
  2. PROPOSED WATERMAIN RENEWAL TO BE COMPLETED BY OTHERS IN JUNE / JULY 2011.
  3. EXIST. ALUMINUM GUARDRAIL TO BE SALVAGED AND DELIVERED TO CITY YARD. IN ACCORDANCE WITH E21



**METRIC**  
WHOLE NUMBERS INDICATE MILLIMETRES  
DECIMALIZED NUMBERS INDICATE METRES

- WARNING**
- IF POWER EQUIPMENT OR EXPLOSIVES ARE TO BE USED FOR EXCAVATION ON THIS PROJECT THE CONTRACTOR MUST:
1. NOTIFY THE GAS COMPANY OF THE PROPOSED LOCATION OF EXCAVATION.
  2. TAKE PRECAUTION TO AVOID DAMAGE TO GAS COMPANY INSTALLATIONS SEE PROVINCIAL REGULATION 210/72 FOR DETAILS.
  3. OBTAIN EXCAVATION PERMITS PRIOR TO CONSTRUCTION.

150 MM	150 MM	HYDRO	HYDRO	HYDRO	150 mm W.M.	WATERMAIN	150 mm W.M.
WATERMAIN	HYDRANT	MTS	MTS	MTS	LAND DRAINAGE SEWER	WASTE WATER SEWER	LAND DRAINAGE SEWER
VALVE	VALVE				300 mm L.D.S.	300 mm L.D.S.	300 mm L.D.S.
250 WWS	250 WWS				250 mm W.W.S.	250 mm W.W.S.	250 mm W.W.S.
MANHOLE	MANHOLE				CONCRETE	CONCRETE	CONCRETE
CATCH BASIN	CATCH BASIN				ASPHALT	ASPHALT	ASPHALT
CURB INLET	CURB INLET				PLANING	PLANING	PLANING
JUNCTIONS	JUNCTIONS				SIDEWALK	SIDEWALK	SIDEWALK
CULVERT	CULVERT				PAVING STONES	PAVING STONES	PAVING STONES
100 GAS	100 GAS				PARTIAL DEPTH REPAIR	PARTIAL DEPTH REPAIR	PARTIAL DEPTH REPAIR
EXISTING	LEGEND-PLAN	PROPOSED	EXISTING	LEGEND-PLAN	PROPOSED	EXISTING	LEGEND-PROFILE

**UNDERGROUND STRUCTURES**

SUPPLY, U/G STRUCTURES COMMITTEE DATE

NOTE:  
LOCATION OF UNDERGROUND STRUCTURES AS SHOWN ARE BASED ON THE BEST INFORMATION AVAILABLE BUT NO GUARANTEE IS GIVEN THAT ALL EXISTING UTILITIES ARE SHOWN OR THAT THE GIVEN LOCATIONS ARE EXACT. CONFIRMATION OF EXISTENCE AND EXACT LOCATION OF ALL SERVICES MUST BE OBTAINED FROM THE INDIVIDUAL UTILITIES BEFORE PROCEEDING WITH CONSTRUCTION.

B.M. 654271 N 5517192.470 E 632610.651	DESIGNED BY	RTP
ELEV. 233.084	DRAWN BY	PMW
	CHECKED BY	JNC
	APPROVED BY	DPK
	HOR. SCALE	1:250
	VERTICAL	1:10
1 ISSUED FOR TENDER	DATE	11/06/23
NO. REVISIONS	DATE	BY
		2011/06/23

**DILLON CONSULTING**

RELEASED FOR CONSTRUCTION  
ORIGINAL SIGNED BY B. KIBBINS  
DATE 11/06/23

ENGINEER'S SEAL  
PROVINCE OF MANITOBA  
REGISTERED PROFESSIONAL ENGINEER  
STAMPED BY  
J.N. CRANG  
2011/06/23

**THE CITY OF WINNIPEG**  
PUBLIC WORKS DEPARTMENT

BISON DRIVE & PEMBINA HIGHWAY  
INTERSECTION IMPROVEMENTS

CITY DRAWING NUMBER  
P-3327-12

SHEET 12 OF 24

CONSULTANT DRAWING NUMBER

PAVING AND GRADING  
STA: 0+340 TO 0+505 WESTBOUND CONTROL LINE

CONSULTANT PROJECT NUMBER  
11-4587