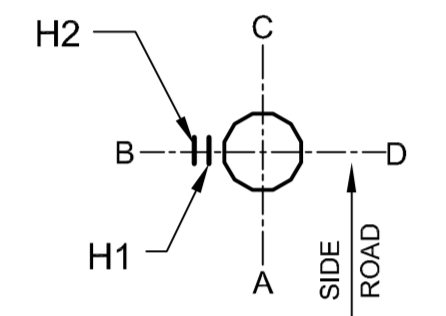
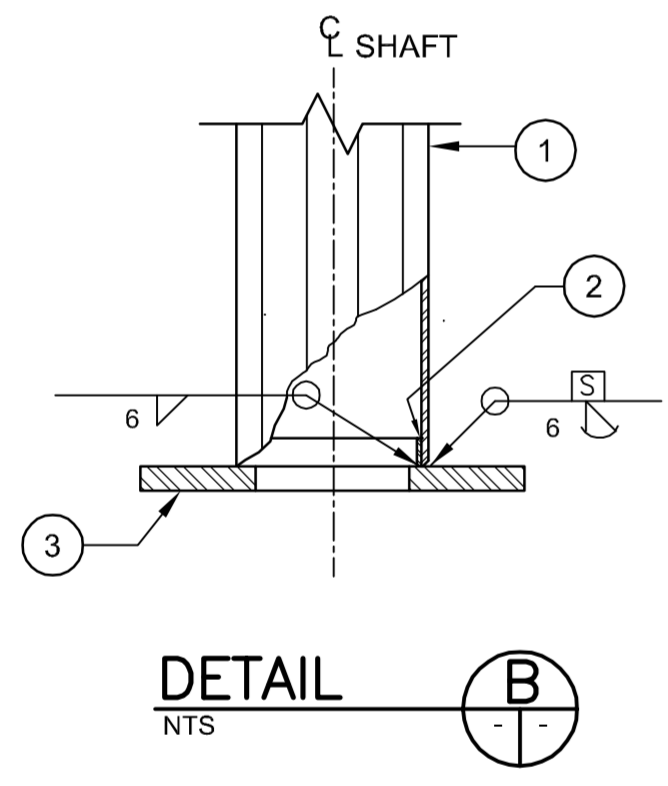


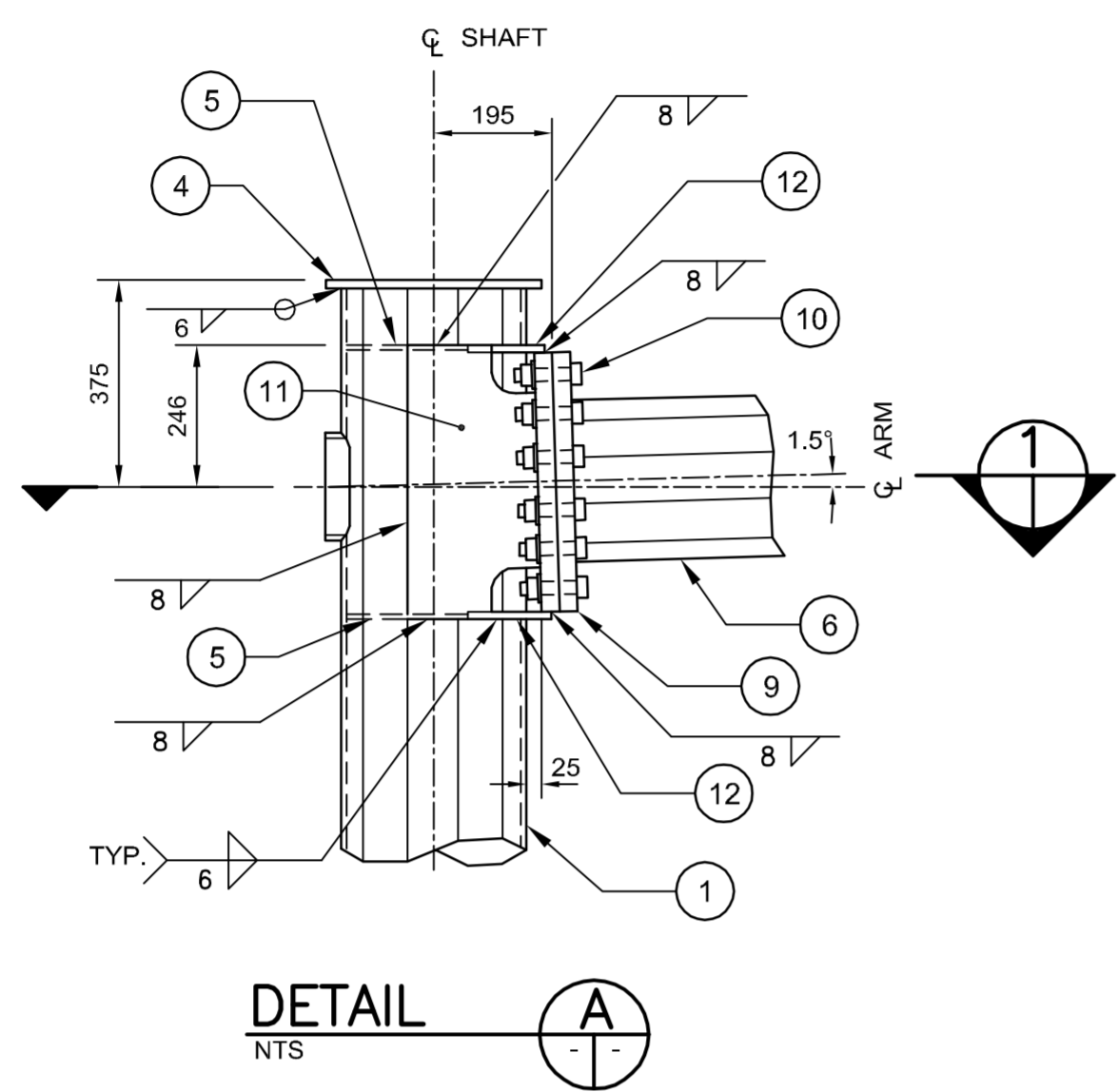
ELEVATION
NTS



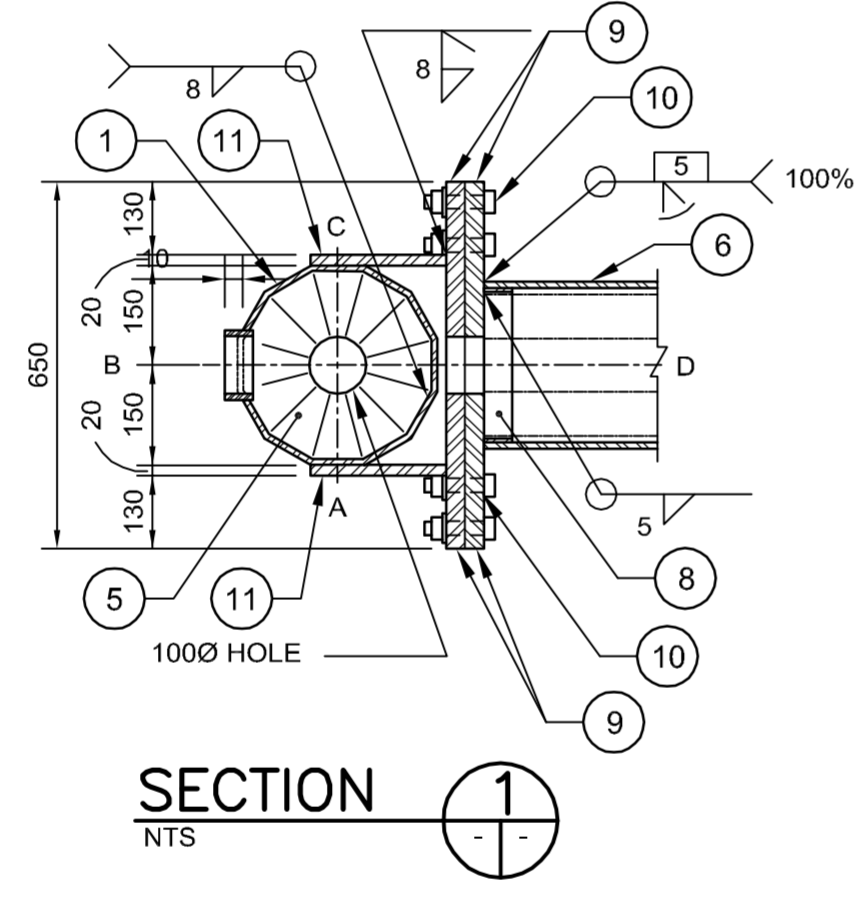
ORIENTATION
NTS



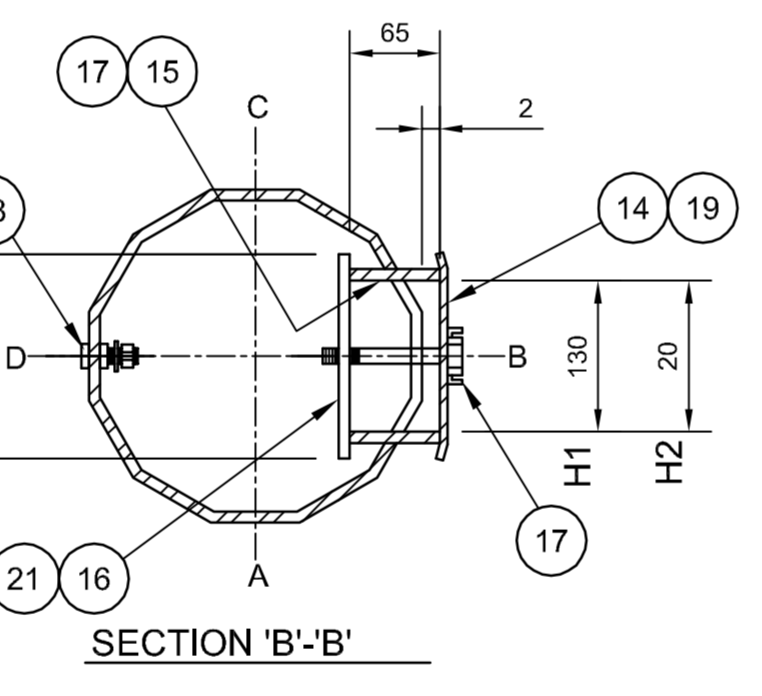
DETAIL B
NTS



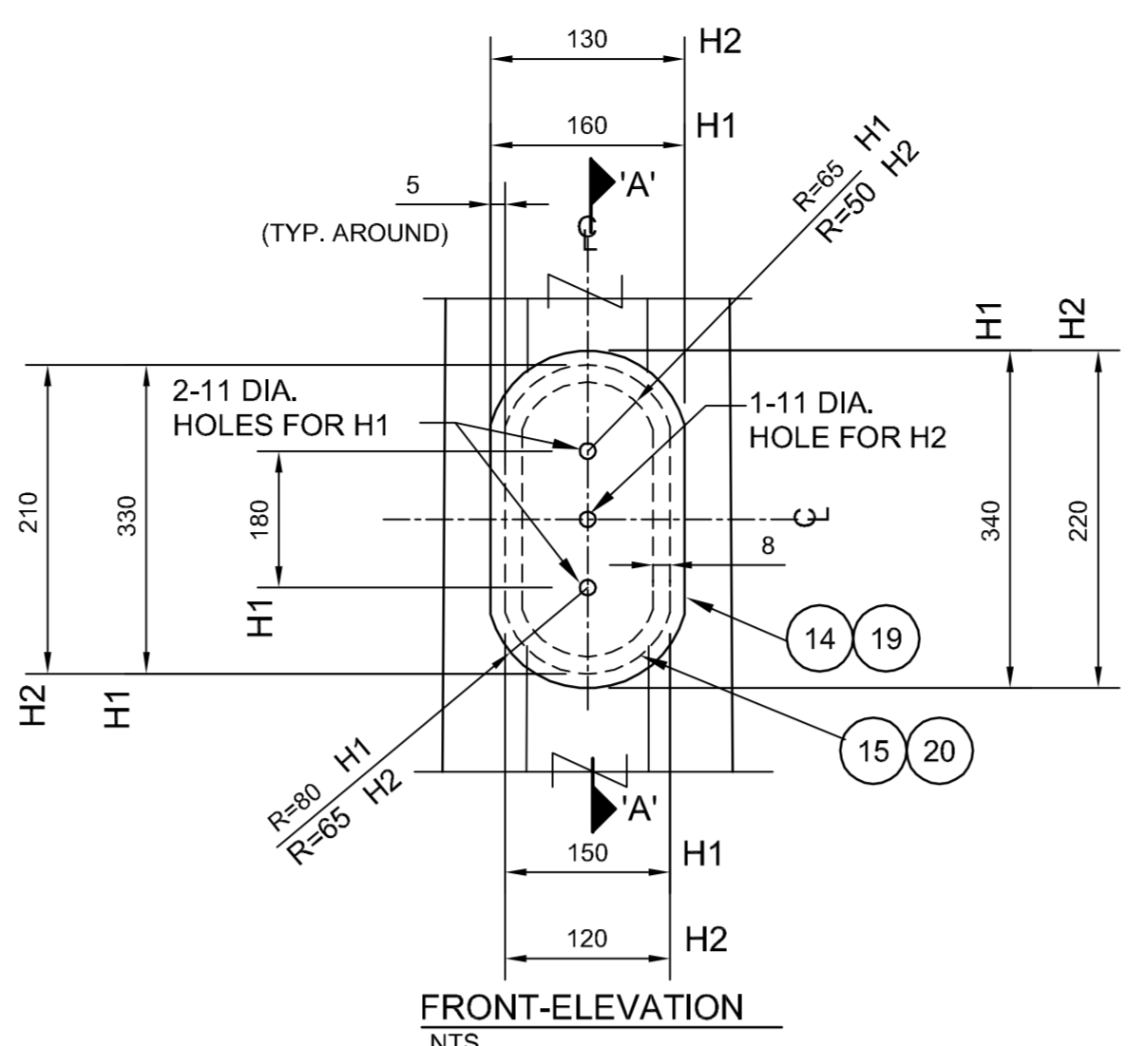
DETAIL A
NTS



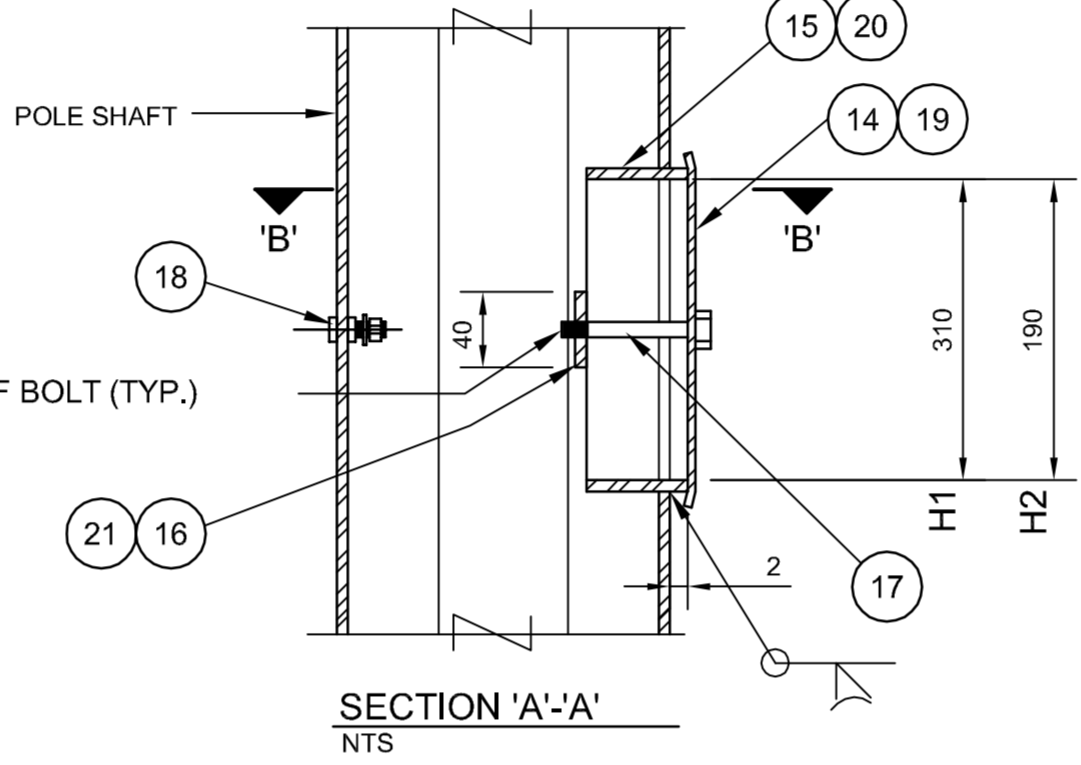
SECTION 1
NTS



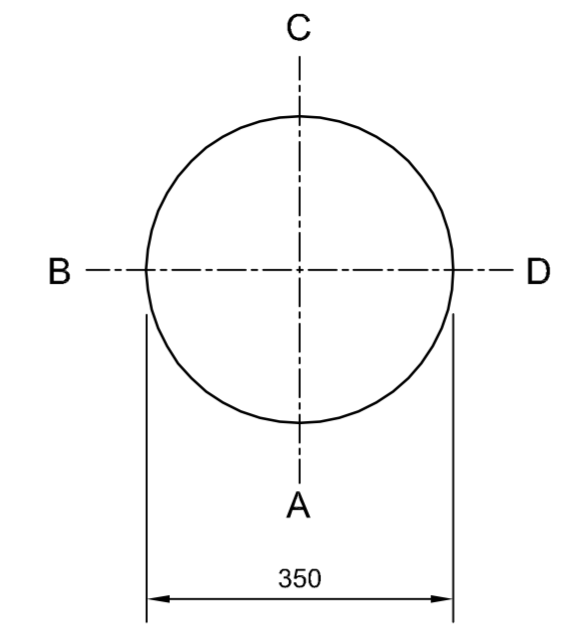
HANDHOLE-MARK H1 & H2
NTS



FRONT-ELEVATION
NTS



SECTION 'A-A'
NTS



TOP PLATE - MARK 4
NTS

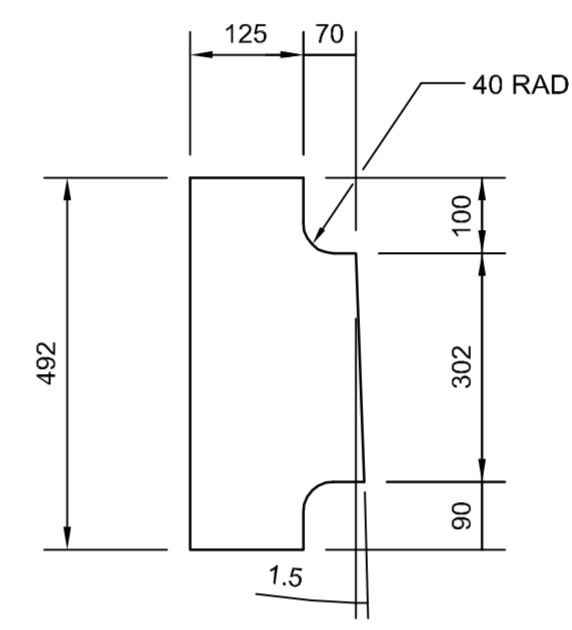
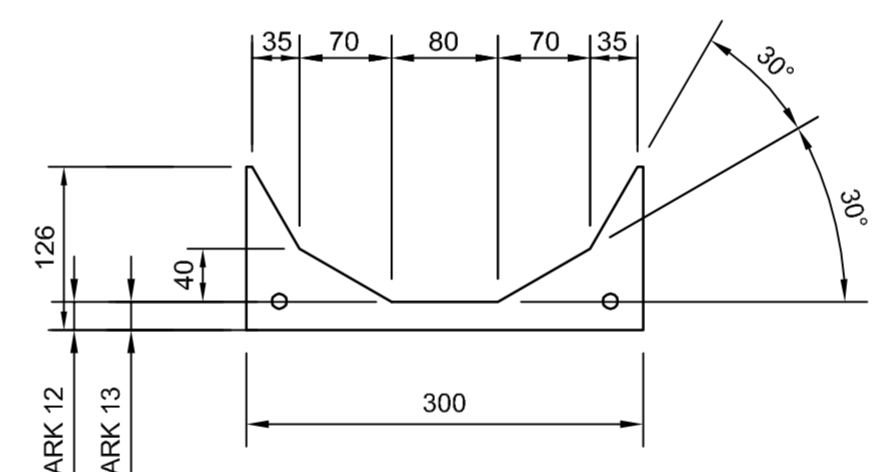
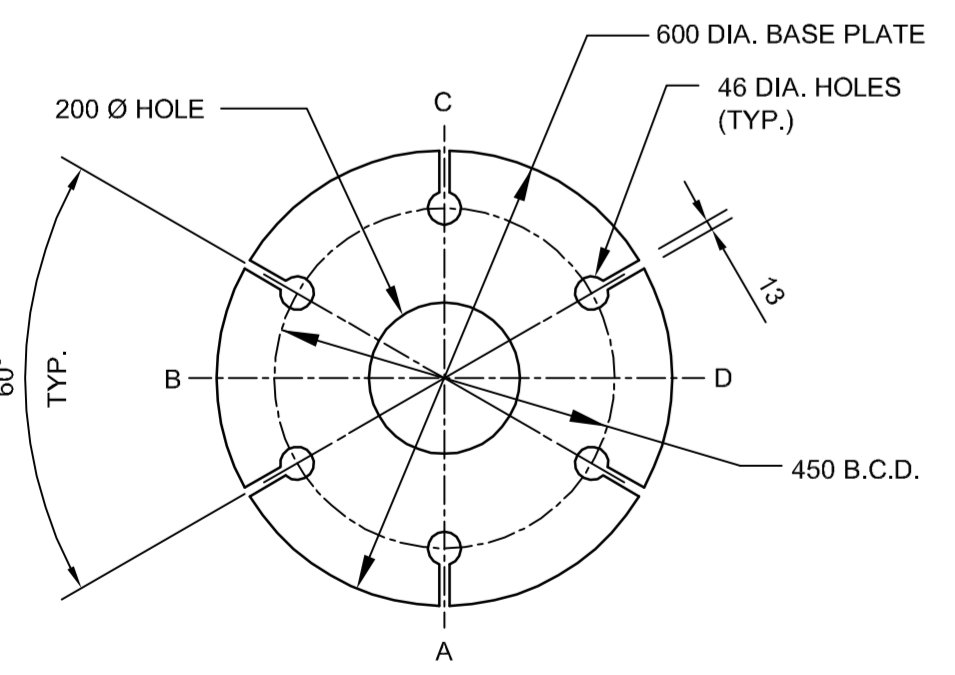


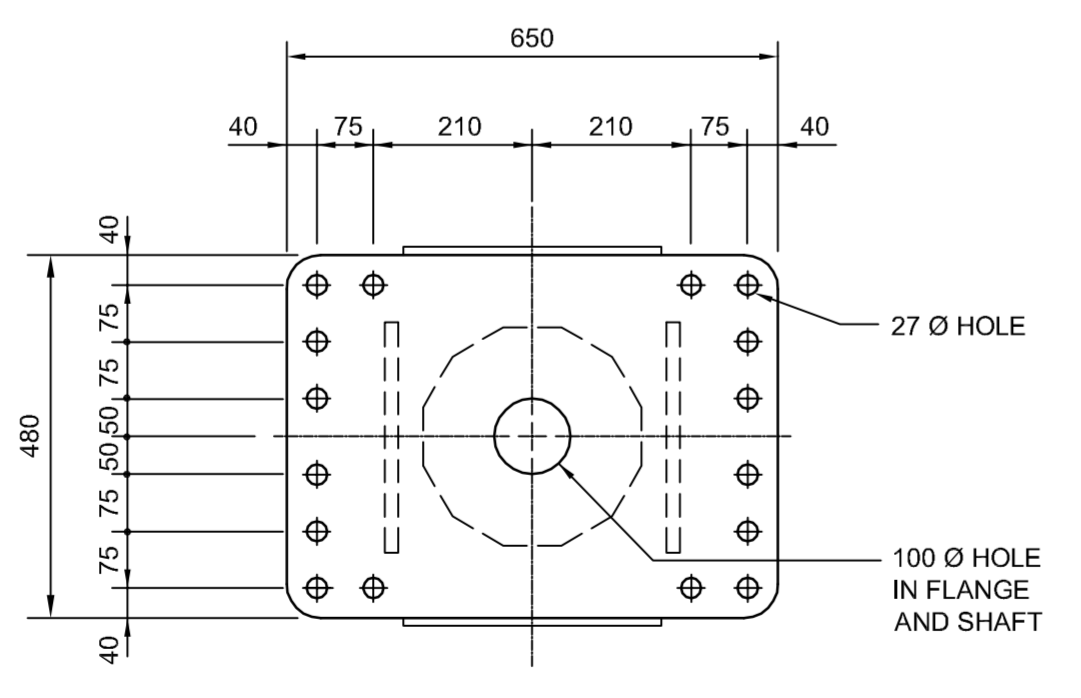
PLATE - MARK 11
NTS



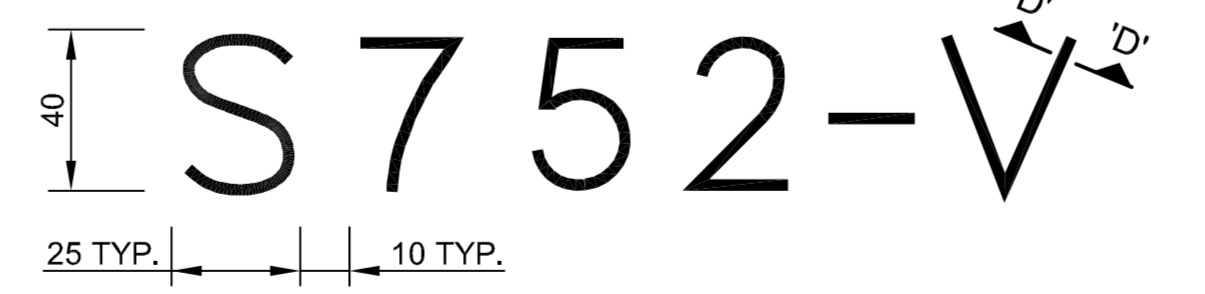
GUSSET PLATE
MARK 12 & 13
NTS



BASE PLATE DETAIL
NTS



FLANGE PLATE DETAIL
NTS



STRUCTURE IDENTIFICATION NUMBER SIZE
NTS

NOTES

1. PROVIDE "RAISED" IDENTIFICATION NO. WITH WELDING ELECTRODE FOR THE SIGN STRUCTURE.
2. GRIND ALL SHARP POINTS AND EDGES.

GENERAL NOTES

1. **DESIGN DATA**
AASHTO STANDARD SPECIFICATIONS FOR STRUCTURAL SUPPORTS FOR HIGHWAY SIGNS, LUMINAIRES, AND TRAFFIC SIGNALS, 5TH EDITION, 2009.

DESIGN WIND LOAD = 1.44 kPa (30 PSF)

DESIGN ICE LOAD = 0.15 kPa (3 PSF)
2. ALL MATERIALS SHALL BE CSA G40.21 - 350W STRUCTURAL STEEL
3. ALL MATERIALS EXCEPT STAINLESS STEEL AND ALUMINUM SHALL BE HOT-DIP GALVANIZED IN ACCORDANCE WITH CSA G164 TO A MIN. NET RETENTION OF 610 g/m²
4. ALL AREAS OF DAMAGED GALVANIZING SHALL BE REPAIRED WITH SELF-FLUXING LOW TEMPERATURE, ZINC BASED ALLOY ROD OR SPRAY-ON COATING CALLED "ZINGA".
5. **SIGNS**
2 SIGN PLATES, MAXIMUM SIZE 915 x 915 mm EACH. SUPPLIED AND INSTALLED BY THE CITY OF WINNIPEG TRAFFIC SERVICES BRANCH.
6. INSTALL HOLES IN THE GUSSET PLATES FOR DRAINAGE DURING GALVANIZING AS DETAILED.

METRIC

WHOLE NUMBERS INDICATE MILLIMETRES
DECIMALIZED NUMBERS INDICATE METRES

WARNING

- IF POWER EQUIPMENT OR EXPLOSIVES ARE TO BE USED FOR EXCAVATION ON THIS PROJECT THE CONTRACTOR MUST:
1. NOTIFY THE GAS COMPANY OF THE PROPOSED LOCATION OF EXCAVATION.
 2. TAKE PRECAUTION TO AVOID DAMAGE TO GAS COMPANY INSTALLATIONS SEE PROVINCIAL REGULATION 210/72 FOR DETAILS.
 3. OBTAIN EXCAVATION PERMITS PRIOR TO CONSTRUCTION.

BILL OF MATERIALS		
MK.	QTY.	DESCRIPTION
1	1	DODECAGONAL SHAFT 300 A/F x 6.4 THICK PLATE
2	1	BACK-UP STRIP 38 x 6
3	1	BASE PLATE 600 DIA. x 38 THICK
4	1	TOP PLATE 12 THICK
5	2	DODECAGONAL GUSSET PLATE 8 THICK
6	1	DODECAGONAL ARM 300 A/F TO 150 A/F x 6.4 THICK PLATE
7	1	DODECAGONAL END PLATE 150 A/F x 6.4 THICK
8	1	BACK-UP STRIP 38 x 5
9	2	FLANGE PLATE 32 THICK
10	16	25 DIA. BOLTS C/2 NUT & WASHER (STAINLESS STEEL-TYPE 316)
11	2	SIDE GUSSET PLATE 20 THICK
12	1	GUSSET PLATE 12 THICK
13	1	GUSSET PLATE 12 THICK
		HANDHOLE MARK H1
14	1	COVER PLATE 11 GA. x 160x 340 (A569)
15	1	REINFORCING RING 8 x 65 x 830
16	2	CLAMP BAR 6 x 40 x 180
17	2	10 DIA. x 140 BOLT S/S (TYPE 316)
18	1	GROUND STUD ASSEMBLY 10 DIA. x 40
		HANDHOLE MARK H2
19	1	COVER PLATE 11 GA. x 130 x 220 (A569)
20	1	REINFORCING RING 8 x 65 x 555
21	1	CLAMP BAR 6 x 40 x 150
17	1	10 DIA. x 140 BOLT S/S (TYPE 316)
18	1	GROUND STUD ASSEMBLY 10 DIA. x 40

*** NOTES:**

1. MARK NO. 16 & 21 C/W 8-DIA. PUNCHED 10 N.C. TAPPED AT THE CENTER OF PLATE.
2. MARK NO. 17 C/W CUP WASHER.
3. MARK NO. 18 C/W 2-10 DIA. HEX NUT, 2-TERMINAL WASHER, & 1-LOCKWASHER

G:\CAD\114587\Contract\Current\Roadway\Overhead_Sign_Structure1.dwg

150 W.M.	WATERMAIN	150 W.M.	HYDRO	HYDRO	150 mm W.M.	WATERMAIN	150 mm W.M.
+	HYDRANT	+	MTS	M.T.S.	+	HYDRANT	+
+	VALVE	+	MTS	CONCRETE	+	VALVE	+
300 LDS	LAND DRAINAGE SEWER	300 LDS		ASPHALT	300 mm L.D.S.	LAND DRAINAGE SEWER	300 mm L.D.S.
250 WWS	WASTE WATER SEWER	250 WWS		PLANING	250 mm W.W.S.	WASTE WATER SEWER	250 mm W.W.S.
○	MANHOLE	●		SIDEWALK	---	PROFILE	---
□	CATCH BASIN	■		PAVING STONES	▣	NORTH/WEST GUTTER	▣
▽	CURB INLET	▽		PARTIAL DEPTH REPAIR	▨	SOUTH/EAST GUTTER	▨
+	JUNCTIONS	+		PROPERTY LINE	---	NORTH/WEST T/LANE	---
---	CULVERT	---		SURVEY BAR	---	SOUTH/EAST T/LANE	---
100 GAS	GAS	100 GAS		CURB RAMP	---		
---	EXISTING	---	---	LEGEND-PLAN	---	LEGEND-PROFILE	---
---	PROPOSED	---	---	PROPOSED	---	PROPOSED	---

UNDERGROUND STRUCTURES SUPPLY, U/G STRUCTURES COMMITTEE DATE		B.M. 654271 N 5517192.470 E 632610.651 ELEV. 233.084		DESIGNED BY CDW DRAWN BY APH CHECKED BY SSR APPROVED BY DPK		ENGINEER'S SEAL PROVINCE OF MANITOBA ORIGINAL STAMPED BY S.S. RIHAL 2011/06/22 REGISTERED PROFESSIONAL ENGINEER		THE CITY OF WINNIPEG PUBLIC WORKS DEPARTMENT Winipeg	
NOTE: LOCATION OF UNDERGROUND STRUCTURES AS SHOWN ARE BASED ON THE BEST INFORMATION AVAILABLE BUT NO GUARANTEE IS GIVEN THAT ALL EXISTING UTILITIES ARE SHOWN OR THAT THE GIVEN LOCATIONS ARE EXACT. CONFIRMATION OF EXISTENCE AND EXACT LOCATION OF ALL SERVICES MUST BE OBTAINED FROM THE INDIVIDUAL UTILITIES BEFORE PROCEEDING WITH CONSTRUCTION.		1 ISSUED FOR TENDER 11/06/23 JNC NO. REVISIONS DATE BY		HOR. SCALE AS NOTED VERTICAL 2011/06/23		RELEASED FOR CONSTRUCTION ORIGINAL SIGNED BY B. KIBBINS DATE 11/06/23		CONSULTANT PROJECT NUMBER 11-4587	
SIGN STRUCTURE - STRUCTURAL NO. S752 FABRICATION DETAILS						CITY DRAWING NUMBER P-3327-24 SHEET 24 OF 24		CONSULTANT DRAWING NUMBER	