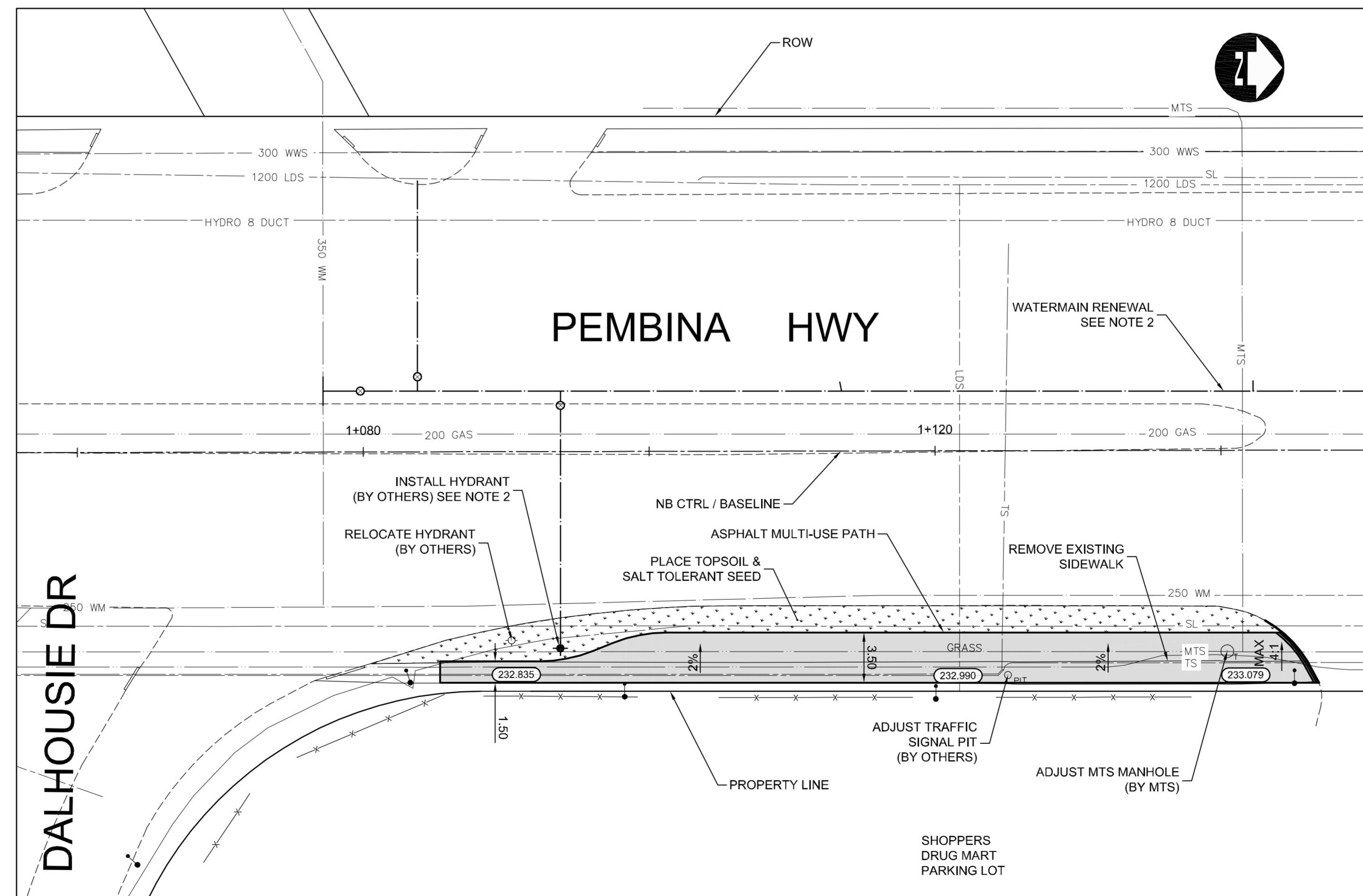


CONSTRUCTION NOTES:

1. THE CONTRACTOR MUST COMPLY WITH ALL SPECIFICATIONS OUTLINED IN E23 - OPERATING CONSTRAINTS FOR WORK IN CLOSE PROXIMITY TO FEEDERMAINS.
2. PROPOSED WATERMAIN RENEWAL TO BE COMPLETED BY OTHERS IN JUNE / JULY 2011.
3. EXIST. ALUMINUM GUARDRAIL TO BE SALVAGED AND DELIVERED TO CITY YARD. IN ACCORDANCE WITH E21



MATCHLINE AT STA: 1+140

METRIC

WHOLE NUMBERS INDICATE MILLIMETRES
DECIMALIZED NUMBERS INDICATE METRES

WARNING

IF POWER EQUIPMENT OR EXPLOSIVES ARE TO BE USED FOR EXCAVATION ON THIS PROJECT THE CONTRACTOR MUST:

1. NOTIFY THE GAS COMPANY OF THE PROPOSED LOCATION OF EXCAVATION.
2. TAKE PRECAUTION TO AVOID DAMAGE TO GAS COMPANY INSTALLATIONS SEE PROVINCIAL REGULATION 210/72 FOR DETAILS.
3. OBTAIN EXCAVATION PERMITS PRIOR TO CONSTRUCTION.

G:\CAD\114587\Contract\Current\PAVING_AND_GRADING.dwg

150 WM	WATERMAIN	150 WM	HYDRO	HYDRO	HYDRO	150 mm W.M.	WATERMAIN	150 mm W.M.
+	HYDRANT	+	MTS	MTS	+	HYDRANT	+	
+	VALVE	+			+	VALVE	+	
300 LDS	LAND DRAINAGE SEWER	300 LDS			300 mm L.D.S.	LAND DRAINAGE SEWER	300 mm L.D.S.	
250 WWS	WASTE WATER SEWER	250 WWS			250 mm W.W.S.	WASTE WATER SEWER	250 mm W.W.S.	
○	MANHOLE	●			○	MANHOLE	○	
□	CATCH BASIN	■			□	CATCH BASIN	□	
▽	CURB INLET	▽			▽	CURB INLET	▽	
+	JUNCTIONS	+			+	JUNCTIONS	+	
+	CULVERT	+			+	CULVERT	+	
100 GAS	GAS	100 GAS			100 GAS	GAS	100 GAS	
EXISTING	LEGEND-PLAN	PROPOSED	EXISTING	LEGEND-PLAN	PROPOSED	EXISTING	LEGEND-PROFILE	PROPOSED

UNDERGROUND STRUCTURES

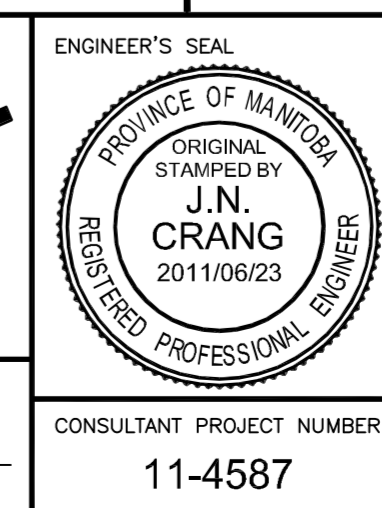
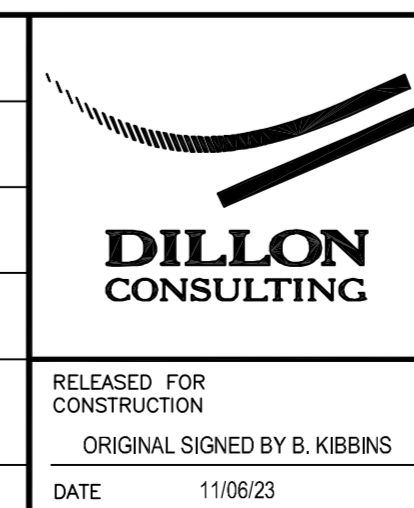
SUPPLY U/G STRUCTURES COMMITTEE DATE

NOTE:
LOCATION OF UNDERGROUND STRUCTURES AS SHOWN ARE BASED ON THE BEST INFORMATION AVAILABLE BUT NO GUARANTEE IS GIVEN THAT ALL EXISTING UTILITIES ARE SHOWN OR THAT THE GIVEN LOCATIONS ARE EXACT. CONFIRMATION OF EXISTENCE AND EXACT LOCATION OF ALL SERVICES MUST BE OBTAINED FROM THE INDIVIDUAL UTILITIES BEFORE PROCEEDING WITH CONSTRUCTION.

B.M. 654271 N 5517192.470 E 632610.651
ELEV. 233.084

DESIGNED BY	RTP
DRAWN BY	PMW
CHECKED BY	JNC
APPROVED BY	DPK
HOR. SCALE	1:250
VERTICAL	1:10
1 ISSUED FOR TENDER	11/06/23 JNC
NO. REVISIONS	DATE BY
	2011/06/23

RELEASED FOR CONSTRUCTION	ORIGINAL SIGNED BY B. KIBBINS	DATE	11/06/23
---------------------------	-------------------------------	------	----------



THE CITY OF WINNIPEG
PUBLIC WORKS DEPARTMENT

BISON DRIVE & PEMBINA HIGHWAY INTERSECTION IMPROVEMENTS

PAVING AND GRADING
STA: 1+065 TO 1+150

CITY DRAWING NUMBER: P-3327-4
SHEET 4 OF 24
CONSULTANT DRAWING NUMBER

CONSULTANT PROJECT NUMBER: 11-4587