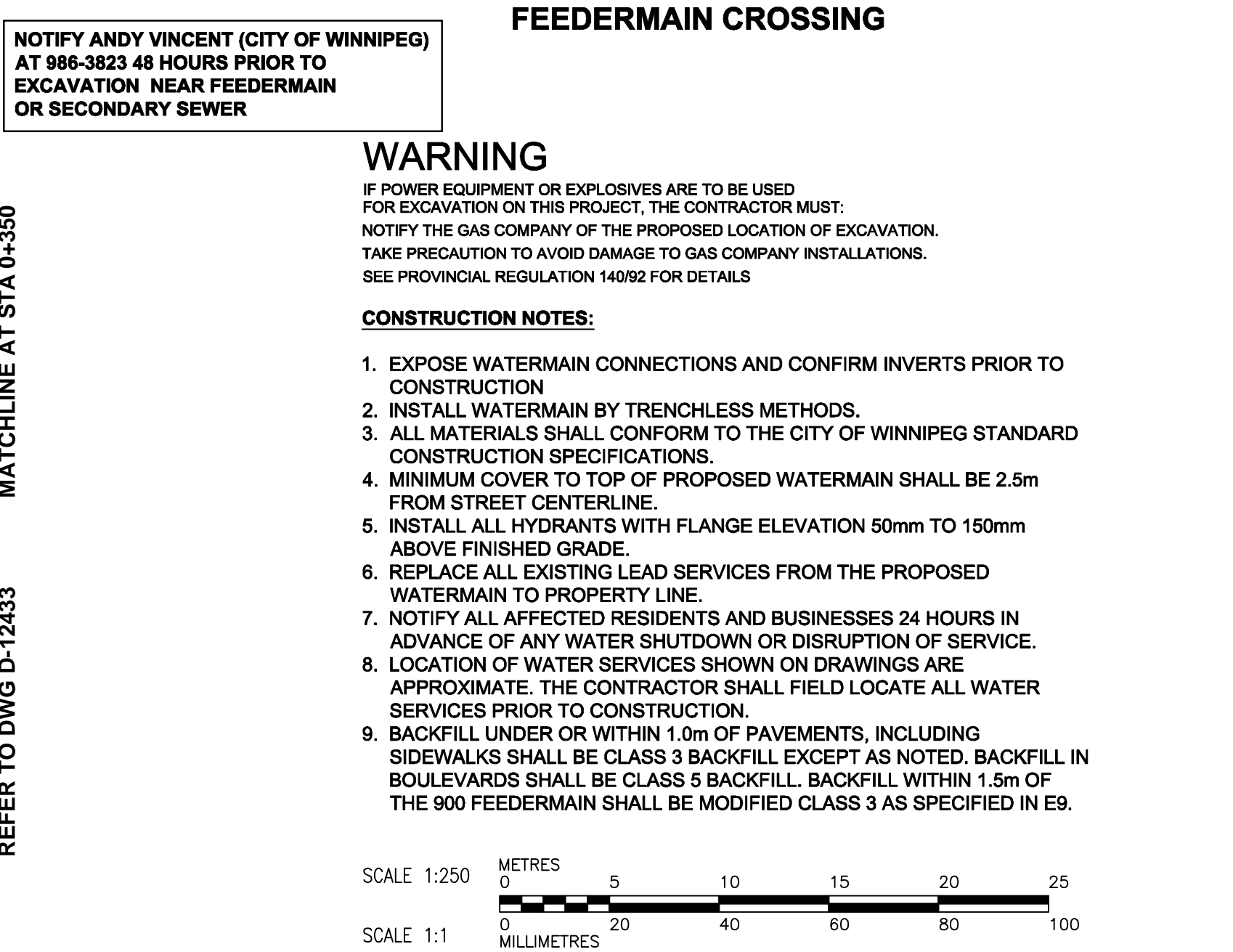
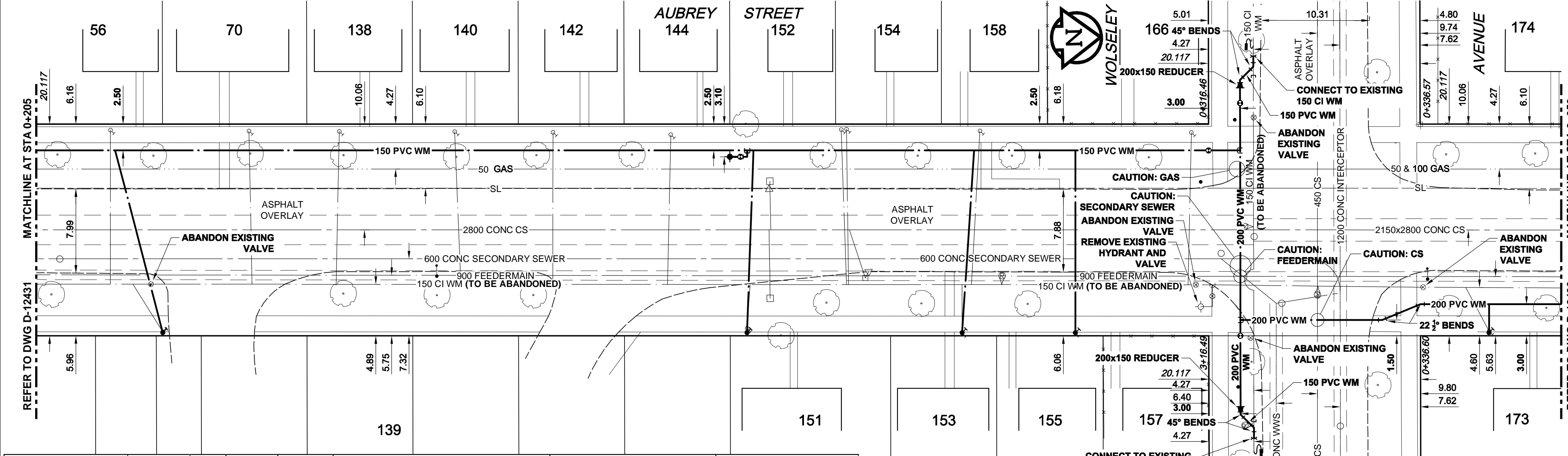
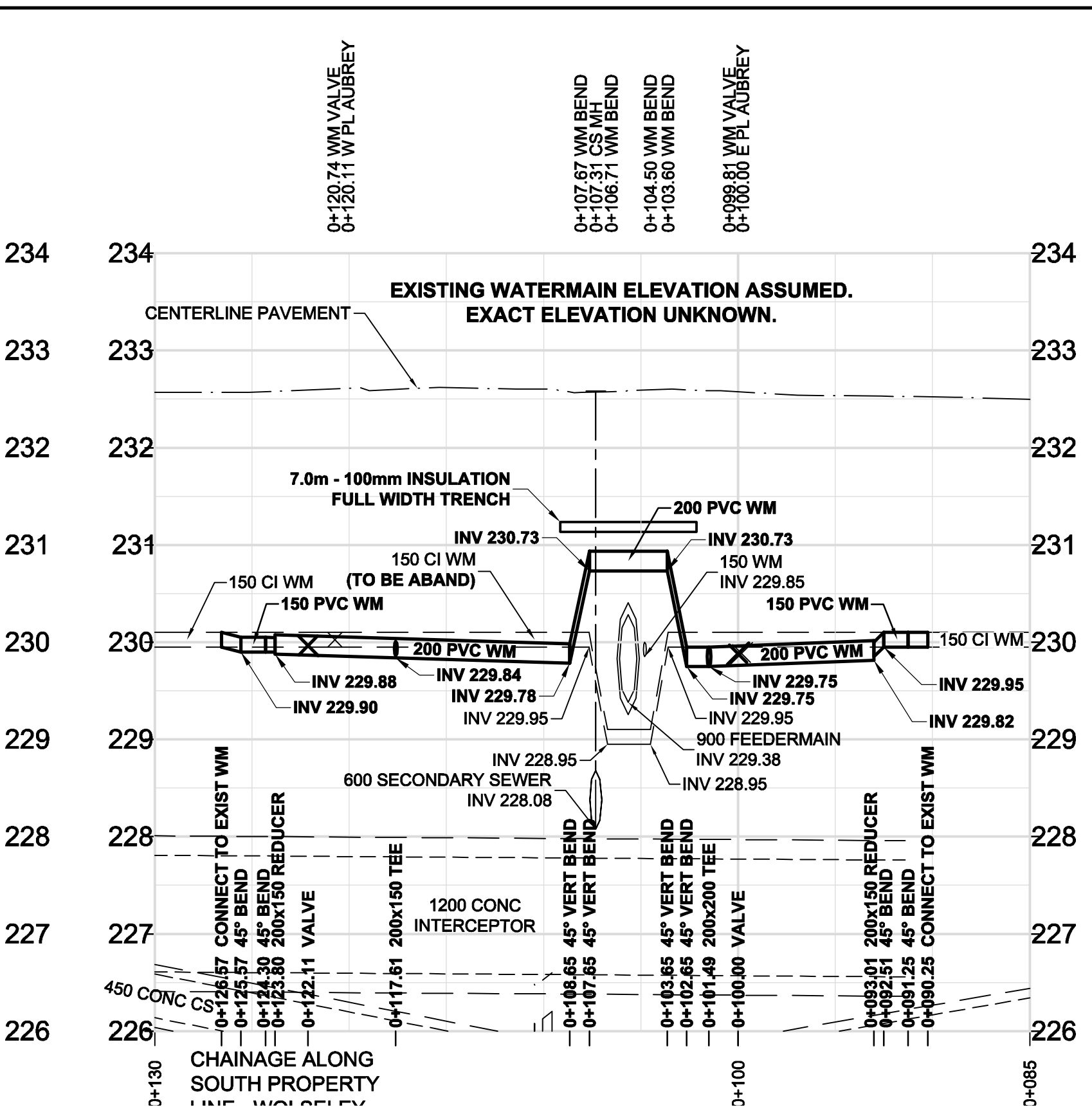
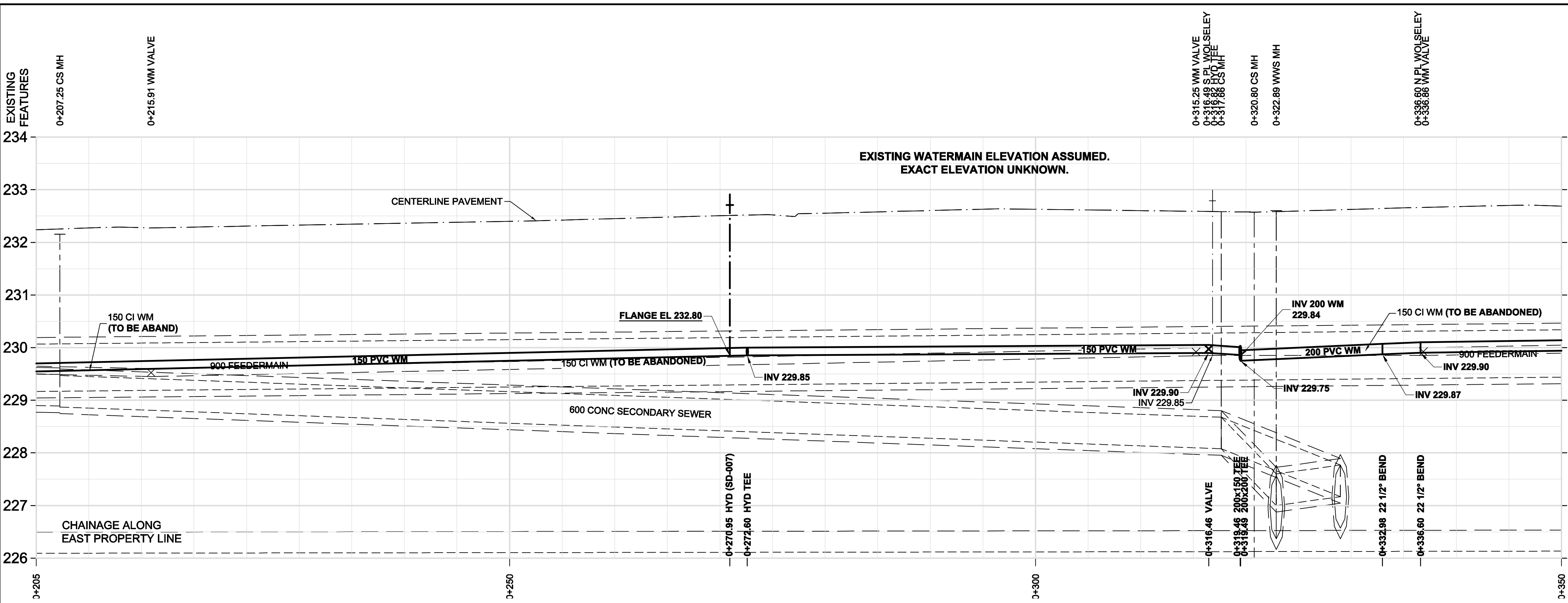


D SIZE 22" x 34" (559mm x 864mm)

PLOT: 11/05/26 11:24:19 AM

ACCOM FILE NAME: 6018096-01-C-102-ROX.dwg Saved By: locostg



ADDRESS	NATURE OF SERVICE	SIZE	MATERIAL	DISTANCE SC TO PROPERTY	POSITION OF SC (curb stop)	POSITION OF CC (corp)	COMMENTS:
56	AUBREY ST	RESIDENTIAL	3/4 in (19 mm) COPPER	(0.5 m)	Long: (4.6 m) S of NL HOUSE Short: (2.3 m) N of SL HOUSE	Long: OPP of S/C	MAIN TAPPED OPPOSITE SIDE
70	AUBREY ST	RESIDENTIAL	3/4 in (19 mm) COPPER	(0.5 m)	Long: (7.0 m) N of SL HOUSE Short: (4.1 m) S of NL HOUSE	Long: OPP of S/C	MAIN TAPPED OPPOSITE SIDE
138	AUBREY ST	RESIDENTIAL	3/4 in (19 mm) COPPER	(0.5 m)	Long: (0.0 m) S of NL PALMERSTON HOUSE Short: (1.8 m) N of SL HOUSE	Long: OPP of S/C	MAIN TAPPED OPPOSITE SIDE
139	AUBREY ST	RESIDENTIAL	3/4 in (19 mm) COPPER	(0.3 m)	Long: (12.8 m) N of 1ST HYD 1347 BLDG Short: (8.5 m) S of SL HOUSE	Long: OPP of S/C	RENEW TO PROPERTY
140	AUBREY ST	RESIDENTIAL	3/4 in (19 mm) COPPER	(0.5 m)	Long: (5.5 m) S of NL HOUSE Short: (3.0 m) N of SL HOUSE	Long: OPP of S/C	MAIN TAPPED OPPOSITE SIDE
142	AUBREY ST	RESIDENTIAL	3/4 in (19 mm) COPPER	(0.5 m)	Long: (6.1 m) S of NL HOUSE Short: (0.9 m) N of SL HOUSE	Long: OPP of S/C	MAIN TAPPED OPPOSITE SIDE
144	AUBREY ST	RESIDENTIAL	3/4 in (19 mm) COPPER	(0.5 m)	Long: (4.7 m) S of NL HOUSE Short: (2.7 m) N of SL HOUSE	Long: OPP of S/C	MAIN TAPPED OPPOSITE SIDE
151	AUBREY ST	RESIDENTIAL	3/4 in (19 mm) COPPER	(0.5 m)	Long: (0.0 m) S of NL WOLSELEY HOUSE Short: (7.0 m) N of SL HOUSE	Long: OPP of S/C	RENEW TO PROPERTY
152	AUBREY ST	RESIDENTIAL	3/4 in (19 mm) COPPER	(0.5 m)	Long: (0.8 m) N of NL HOUSE Short: (0.8 m) N of SL HOUSE	Long: OPP of S/C	MAIN TAPPED OPPOSITE SIDE

153	AUBREY ST	RESIDENTIAL	1/2 in (13 mm) COPPER	(0.3 m)	Long: (23.4 m) S of NL WOLSELEY HOUSE Short: (13 m) N of SL HOUSE	Long: OPP of S/C	RENEW TO PROPERTY
154	AUBREY ST	RESIDENTIAL	3/4 in (19 mm) COPPER	(0.5 m)	Long: (8.8 m) S of NL HOUSE Short: (2.6 m) S of SL HOUSE	Long: OPP of S/C	MAIN TAPPED OPPOSITE SIDE
155	AUBREY ST	RESIDENTIAL	3/4 in (19 mm) LEAD	(0.3 m)	Long: (12.6 m) S of NL WOLSELEY HOUSE Short: (1.9 m) S of NL HOUSE	Long: OPP of S/C	RENEW TO PROPERTY
158	AUBREY ST	RESIDENTIAL	3/4 in (19 mm) COPPER	(0.5 m)	Long: (5.8 m) S of NL HOUSE Short: (1.2 m) N of SL HOUSE	Long: OPP of S/C	MAIN TAPPED OPPOSITE SIDE
166	AUBREY ST	RESIDENTIAL	3/4 in (19 mm) COPPER	(0.5 m)	Long: (1.8 m) S of NL WOLSELEY HOUSE Short: (0.6 m) S of NL HOUSE	Long: OPP of S/C	MAIN TAPPED OPPOSITE SIDE
157	AUBREY ST	RESIDENTIAL	3/4 in (19 mm) COPPER	(0.9 m)	Long: (13.4 m) E of EL AUBREY Short: (5.0 m) W of EL HOUSE	Long: OPP of S/C	RENEW TO PROPERTY
173	AUBREY ST	RESIDENTIAL	3/4 in (19 mm) LEAD	(0.5 m)	Long: (6.1 m) N of NL WOLSELEY HOUSE Short: (0.3 m) S of SL HOUSE	Long: OPP of S/C	RENEW TO PROPERTY
174	AUBREY ST	RESIDENTIAL	3/4 in (19 mm) COPPER	(0.5 m)	Long: (7.9 m) N of NL HOUSE Short: (2.0 m) N of SL HOUSE	Long: OPP of S/C	MAIN TAPPED OPPOSITE SIDE

EXISTING	LEGEND - PLAN	NEW	EXISTING	LEGEND - PLAN	NEW	EXISTING	LEGEND - PROFILE	NEW
150 WM	WATERMAIN	150 WM	CURB STOP	REDUCER	150 WM	WATERMAIN	HYDRANT	150 WM
300 LDS	LAND DRAINAGE SEWER	300 LDS	ANODE	COUPLING	300 LDS	LAND DRAINAGE SEWER	VALVE	300 LDS
250 WWS	WASTE WATER SEWER	250 WWS	HYDRO	MANHOLE	250 WWS	WASTE WATER SEWER	PAVEMENT CROWN	250 WWS
○	CATCH BASIN	●	GAS	TESTHOLE	○	N/W PROPERTY LINE	S/E GUTTER	○
△	CULVERT	▲	LAMP STANDARD	TREE	△	S/E GUTTER		△
—	PIPE ABANDONMENTS	—			—			—
+	SURVEY BAR	+			+			+

LOCATION APPROVED UNDERGROUND STRUCTURES

DATE COMMITTEE

NOTE: LOCATION OF UNDERGROUND STRUCTURES AS SHOWN ARE BASED ON THE BEST INFORMATION AVAILABLE. BUT NO GUARANTEE IS GIVEN THAT ALL EXISTING UTILITIES ARE SHOWN OR THAT THE GIVEN LOCATIONS ARE EXACT. CONFIRMATION OF EXISTENCE AND EXACT LOCATION OF ALL SERVICES MUST BE OBTAINED FROM THE INDIVIDUAL UTILITIES BEFORE PROCEEDING WITH CONSTRUCTION.

NO.	ISSUED FOR TENDER	DATE	BY
0	ISSUED FOR TENDER	11/05/26	GL
A	ISSUED FOR REVIEW	11/05/19	JP
	REVISIONS	YYMMDD	BY

DESIGNED BY	CHECKED BY	APPROVED BY	RELEASED FOR CONSTRUCTION
GSK	FMI	CCM	KAS ZUREK
DATE	DATE	DATE	DATE
			2011/05/26

AECOM

DESIGNED BY GSK

CHECKED BY FMI

APPROVED BY CCM

RELEASED FOR CONSTRUCTION

DATE 2011/05/26

PROFESSIONAL'S SEAL

PROVINCE OF MANITOBA
REGISTERED PROFESSIONAL ENGINEER
K.W. FITCHETT
MAY 26, 2011

THE CITY OF WINNIPEG
WATER AND WASTE DEPARTMENT

2011 WATERMAIN RENEWALS CONTRACT 4

AUBREY STREET
STATION 0+205 TO STATION 0+350

SHEET 2 OF 7
CITY DRAWING NUMBER
D-12432

REV 0

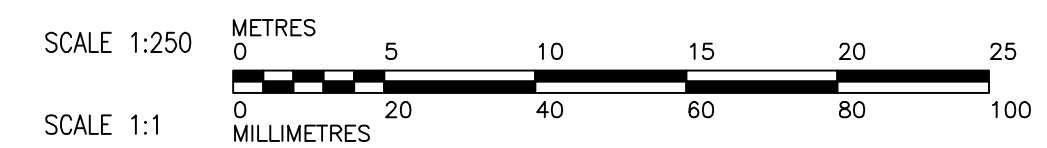
BID OPPORTUNITY NO. 451-2011

NOTIFY ANDY VINCENT (CITY OF WINNIPEG) AT 986-3823 48 HOURS PRIOR TO EXCAVATION NEAR FEEDERMAIN OR SECONDARY SEWER

WARNING

IF POWER EQUIPMENT OR EXPLOSIVES ARE TO BE USED FOR EXCAVATION ON THIS PROJECT, THE CONTRACTOR MUST NOTIFY THE GAS COMPANY OF THE PROPOSED LOCATION OF EXCAVATION. TAKE PRECAUTION TO AVOID DAMAGE TO GAS COMPANY INSTALLATIONS. SEE PROVINCIAL REGULATION 140/92 FOR DETAILS.

- CONSTRUCTION NOTES:**
- EXPOSE WATERMAIN CONNECTIONS AND CONFIRM INVERTS PRIOR TO CONSTRUCTION
 - INSTALL WATERMAIN BY TRENCHLESS METHODS.
 - ALL MATERIALS SHALL CONFORM TO THE CITY OF WINNIPEG STANDARD CONSTRUCTION SPECIFICATIONS.
 - MINIMUM COVER TO TOP OF PROPOSED WATERMAIN SHALL BE 2.5m FROM STREET CENTERLINE.
 - INSTALL ALL HYDRANTS WITH FLANGE ELEVATION 50mm TO 150mm ABOVE FINISHED GRADE.
 - REPLACE ALL EXISTING LEAD SERVICES FROM THE PROPOSED WATERMAIN TO PROPERTY LINE.
 - NOTIFY ALL AFFECTED RESIDENTS AND BUSINESSES 24 HOURS IN ADVANCE OF ANY WATER SHUTDOWN OR DISRUPTION OF SERVICE.
 - LOCATION OF WATER SERVICES SHOWN ON DRAWINGS ARE APPROXIMATE. THE CONTRACTOR SHALL FIELD LOCATE ALL WATER SERVICES PRIOR TO CONSTRUCTION.
 - BACKFILL UNDER OR WITHIN 1.0m OF PAVEMENTS, INCLUDING SIDEWALKS SHALL BE CLASS 3 BACKFILL EXCEPT AS NOTED. BACKFILL IN BOULEVARDS SHALL BE CLASS 5 BACKFILL. BACKFILL WITHIN 1.5m OF THE 900 FEEDERMAIN SHALL BE MODIFIED CLASS 3 AS SPECIFIED IN E9.



METRIC

WHOLE NUMBERS INDICATE MILLIMETRES
DECIMALIZED NUMBERS INDICATE METRES

AECOM

Certificate of Authorization
AECOM Canada Ltd.
No. 4671 Date: MAY 26, 2011