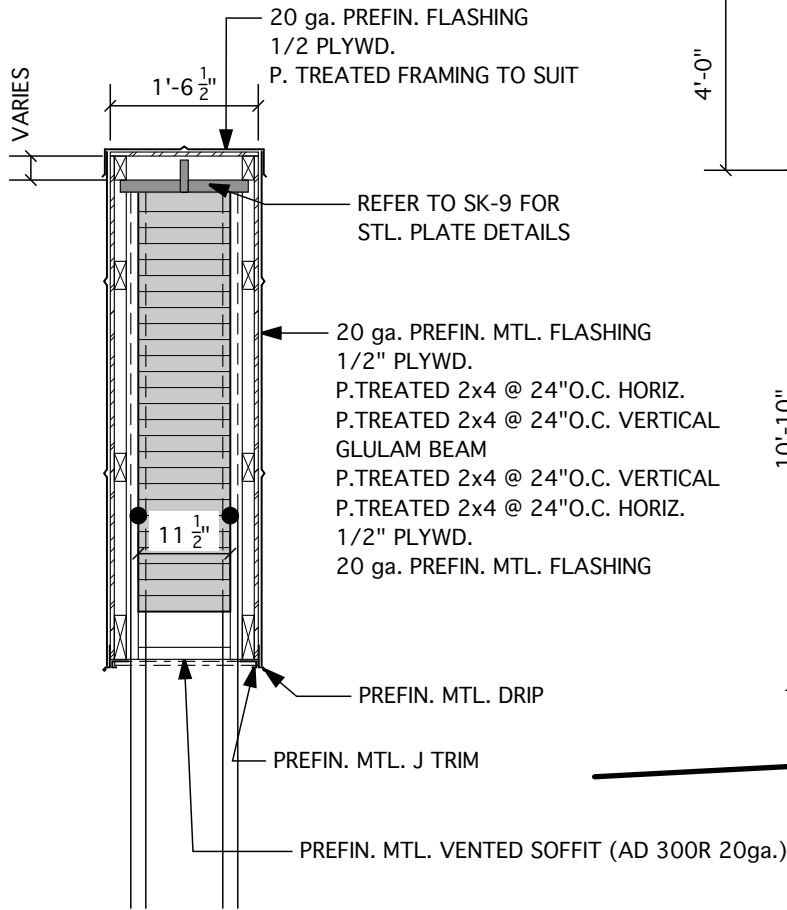
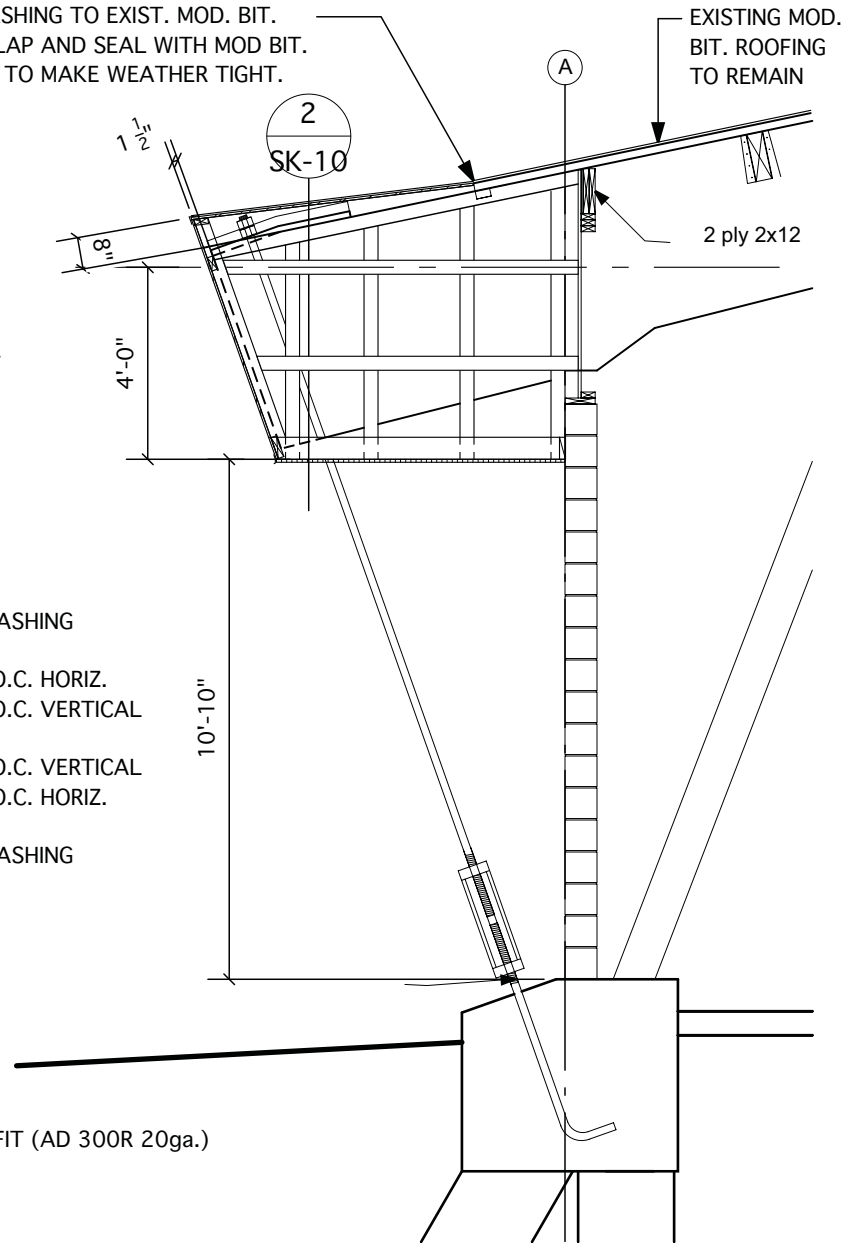


TIE IN FLASHING TO EXIST. MOD. BIT.  
 ROOFING LAP AND SEAL WITH MOD BIT.  
 FLASHING TO MAKE WEATHER TIGHT.

EXISTING MOD.  
 BIT. ROOFING  
 TO REMAIN



**2 SECTION DETAIL**  
 SK-10 SCALE: 1/2" = 1'-0"

**1 FRAMING DETAIL**  
 SK-10 SCALE: 1/4" = 1'-0"

**SK-10**

Glulam Beam Repairs  
 Terry Sawchuk Arena  
 901 Kimberley Ave  
 Winnipeg MB R2K 4B9



**GC ENGINEERING LTD.**

675 ELM STREET  
 WINNIPEG MB R3M 3N8  
 PH (204) 793-3948  
 email [calgray@live.ca](mailto:calgray@live.ca)