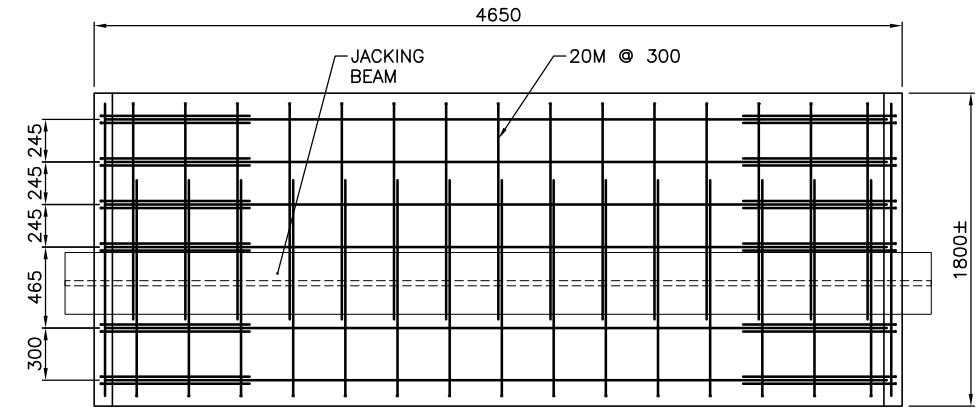
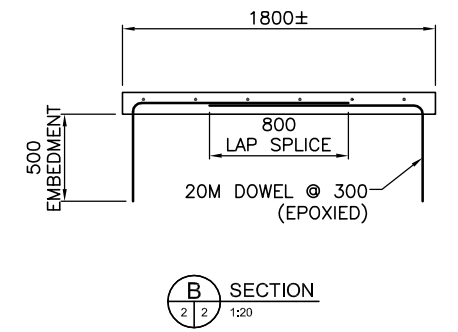


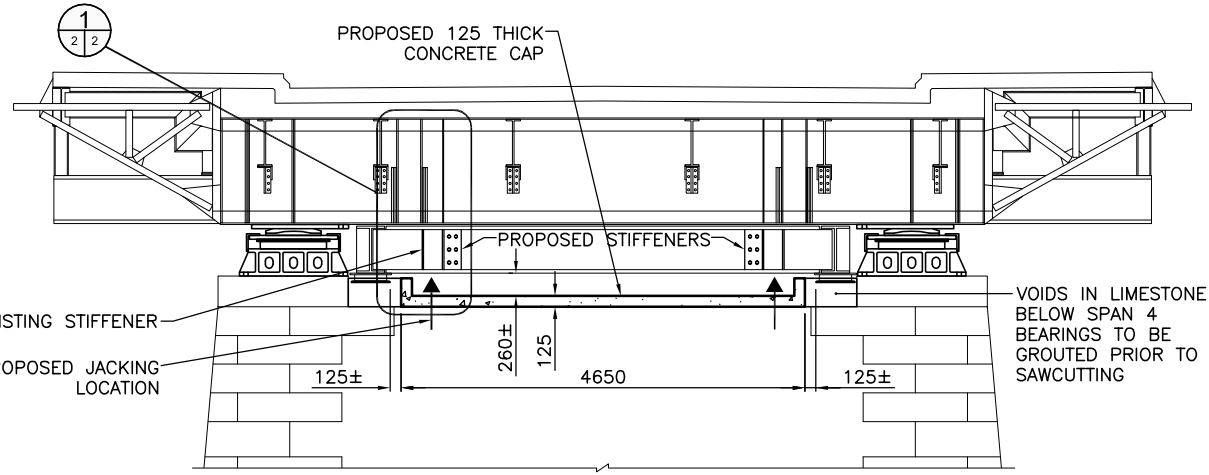
REMOVALS AT SU. 5 (SOUTH SIDE LOOKING NORTH)
NTS



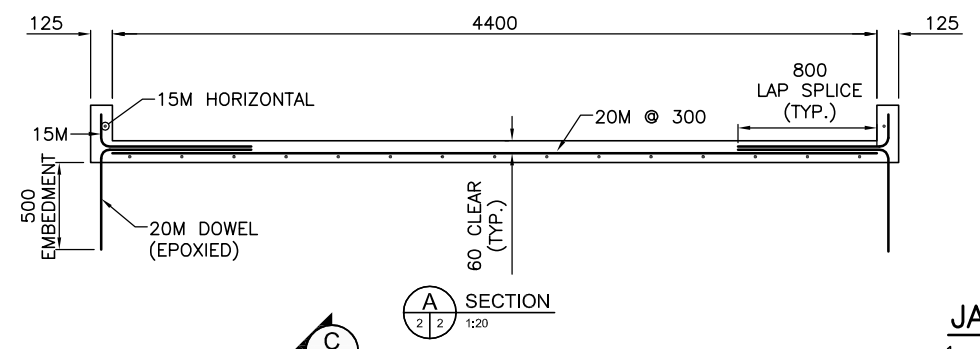
PLAN CONCRETE CAP
NTS



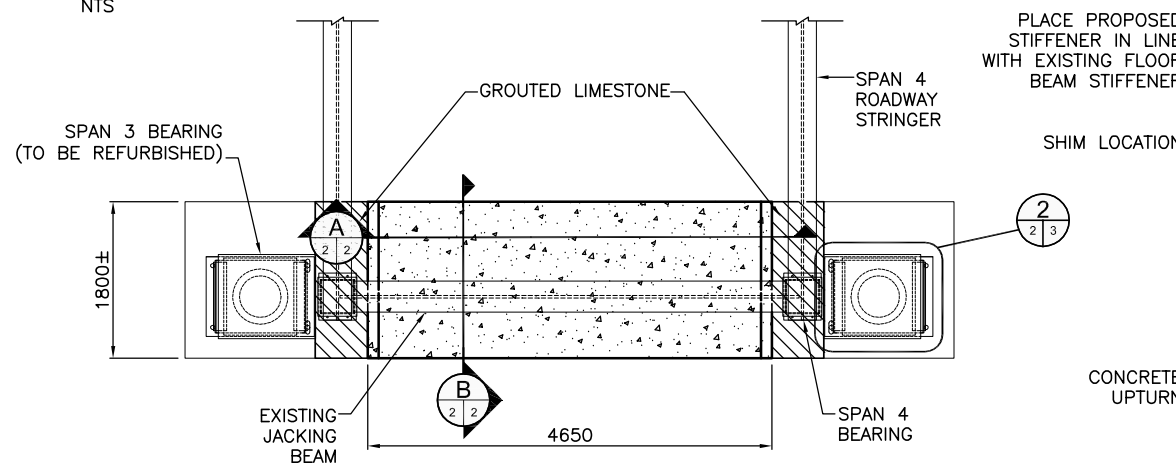
B SECTION
2 | 2
1:20



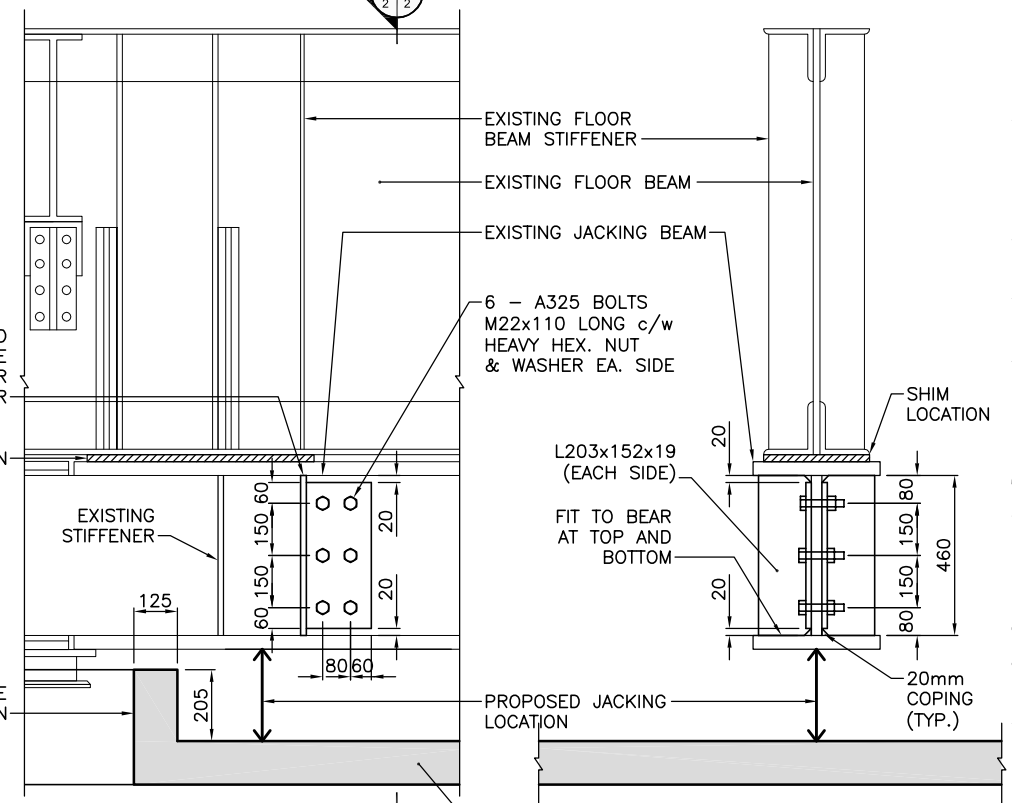
PROPOSED WORK AT SU. 5 (SOUTH SIDE LOOKING NORTH)
NTS



A SECTION
2 | 2
1:20



PLAN AT SU. 5
NTS



1 DETAIL
2 | 2
1:10

C SECTION
2 | 2
1:10

- JACKING PROCEDURE:**
- JACKING TO BE CARRIED OUT WITH BRIDGE CLOSED TO TRAFFIC. ENSURE THAT ALL REQUIRED PROVISIONS FOR TRAFFIC LOAD RESTRICTIONS ARE IN PLACE PRIOR TO JACKING.
 - INSTALL STEEL SHIMS BETWEEN EXISTING JACKING BEAM AND EXISTING FLOOR BEAM AT PROPOSED STIFFENER LOCATIONS, LEAVING A 5 mm± SPACE BETWEEN THE TOP OF THE SHIMS AND THE FLOOR BEAM.
 - INSTALL TWO 275 TON JACKS UNDER JACKING BEAM AT STIFFENER LOCATIONS.
 - ENSURE THAT SPAN 4 BEARINGS ARE NOT CONNECTED TO JACKING BEAM.
 - BOTH JACKS SHALL BE EQUIPPED WITH PRESSURE OR LOAD GAUGES. BOTH JACKS SHALL BE RAISED AT THE SAME TIME. JACKING SHALL BE STOPPED IF THE LOADS ON EACH JACK EXCEEDS 1835 kN (412 500 LB)
 - PLACE BLOCKING WHERE REQUIRED
 - REMOVE EXISTING SUB-PLATES AND STAINLESS STEEL PLATES AND INSTALL NEW SUB-PLATE/STAINLESS STEEL PLATE ASSEMBLIES.
 - LOWER BOTH JACKS EQUALLY.
 - ENSURE THAT THE EXISTING FLOOR BEAM IS NOT BEARING ON THE EXISTING JACKING BEAM.
 - REMOVE JACKS AND SHIMS

APEGM
Certificate of Authorization
Dillon Consulting Limited (MB)
No. 1789 Date: MAY 31, 2011

DRAWING REDUCED NOT TO SCALE

B.M. ELEV.	DESIGNED BY	GCL
	DRAWN BY	JGW
	CHECKED BY	SSR
	APPROVED BY	-
1 ISSUED FOR TENDER	6/1/11	JGW
0 ISSUED FOR REVIEW	5/11/11	JGW
NO. REVISIONS	DATE	BY
	DATE	MAY 2011

DILLON CONSULTING

ENGINEER'S SEAL
PROVINCE OF MANITOBA
G.C.P.
LOEPPKY
JUNE 1, 2011
Member
24656
REGISTERED PROFESSIONAL ENGINEER
CONSULTANT PROJECT NO.
11-4559-3000

THE CITY OF WINNIPEG
PUBLIC WORKS DEPARTMENT
Winnipeg
2011 BRIDGE MAINTENANCE PROGRAM
LOUISE BRIDGE PIER 5 - BEARING REFURBISHMENT
CONCRETE CAP AND JACKING DETAILS
CITY DRAWING NUMBER
B107-11-02
SHEET 2 OF 3
BID OPPORTUNITY
461-2011