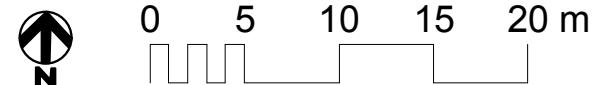
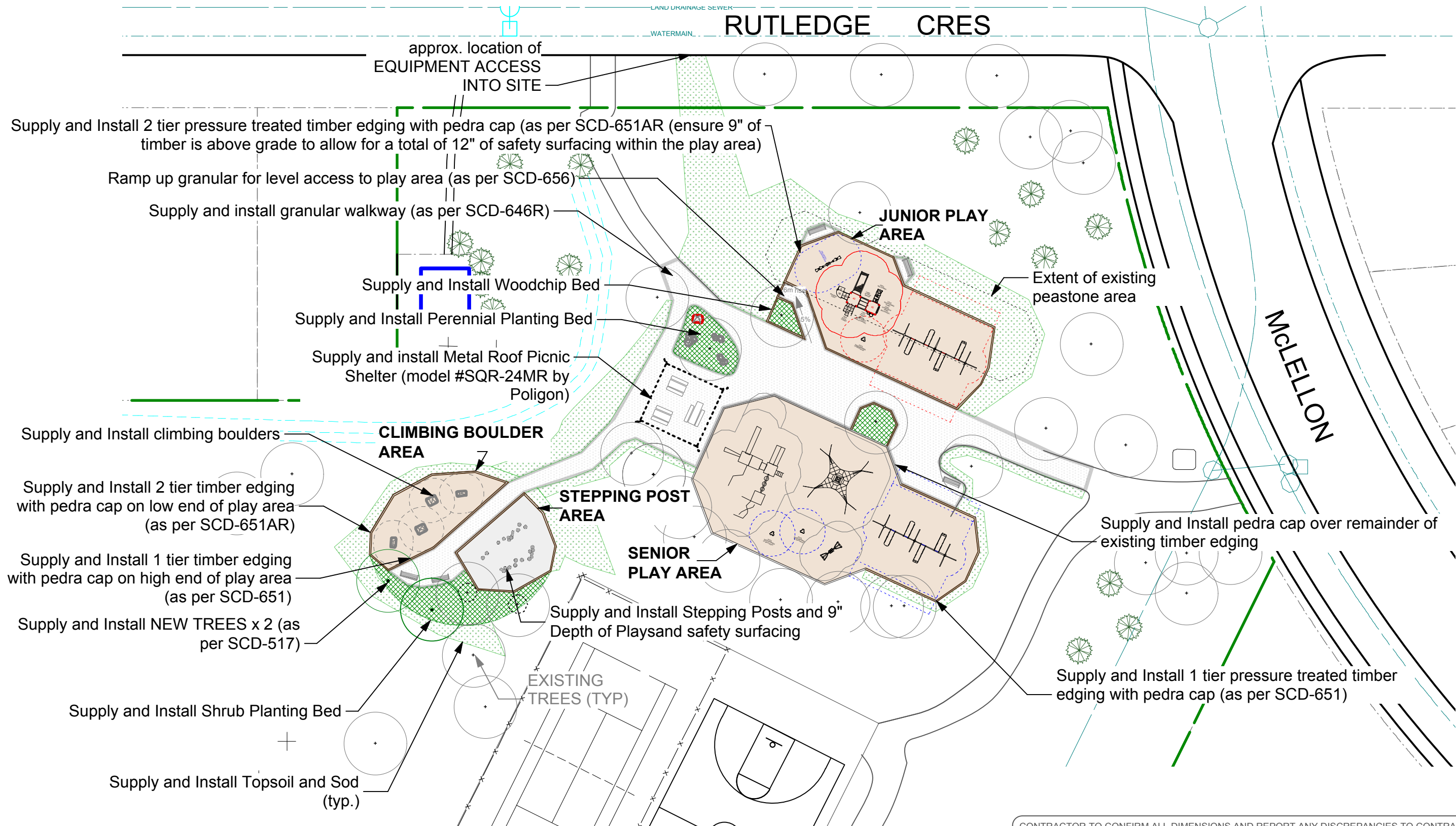


RUTLEDGE CRES



CONTRACTOR TO CONFIRM ALL DIMENSIONS AND REPORT ANY DISCREPANCIES TO CONTRACT ADMINISTRATOR PRIOR TO CONSTRUCTION. LOCATION OF UNDERGROUND STRUCTURES AS SHOWN ARE BASED ON THE BEST INFORMATION AVAILABLE BUT NO GUARANTEE IS GIVEN THAT ALL EXISTING UTILITIES ARE SHOWN OR THAT THE GIVEN LOCATIONS ARE EXACT. CONFIRMATION OF EXISTENCE AND EXACT LOCATION OF ALL SERVICES MUST BE OBTAINED FROM THE INDIVIDUAL UTILITIES BEFORE PROCEEDING WITH CONSTRUCTION.

<p>THE CITY OF WINNIPEG Planning, Property and Development Department Planning and Land Use Division Unit 15 - 30 Fort Street, Winnipeg, MB, (R3C 4X5)</p>	DESIGNED BY	SP	CHECKED BY		DRAWING TITLE Archambault Park Site Works Redevelopment Proposed	DRAWING NO. A.63-A2
	DRAWN BY	SP	APPROVED BY	MANAGER, PARK AND OPEN SPACES		
	HORIZ. SCALE	1:400				
	DATE	MAY 2011		MANAGER, PLANNING AND LAND USE DIVISION	DATE	
					SITE ADDRESS	224 Rutledge Crescent
						BID OPPORTUNITY NO. 464-2011