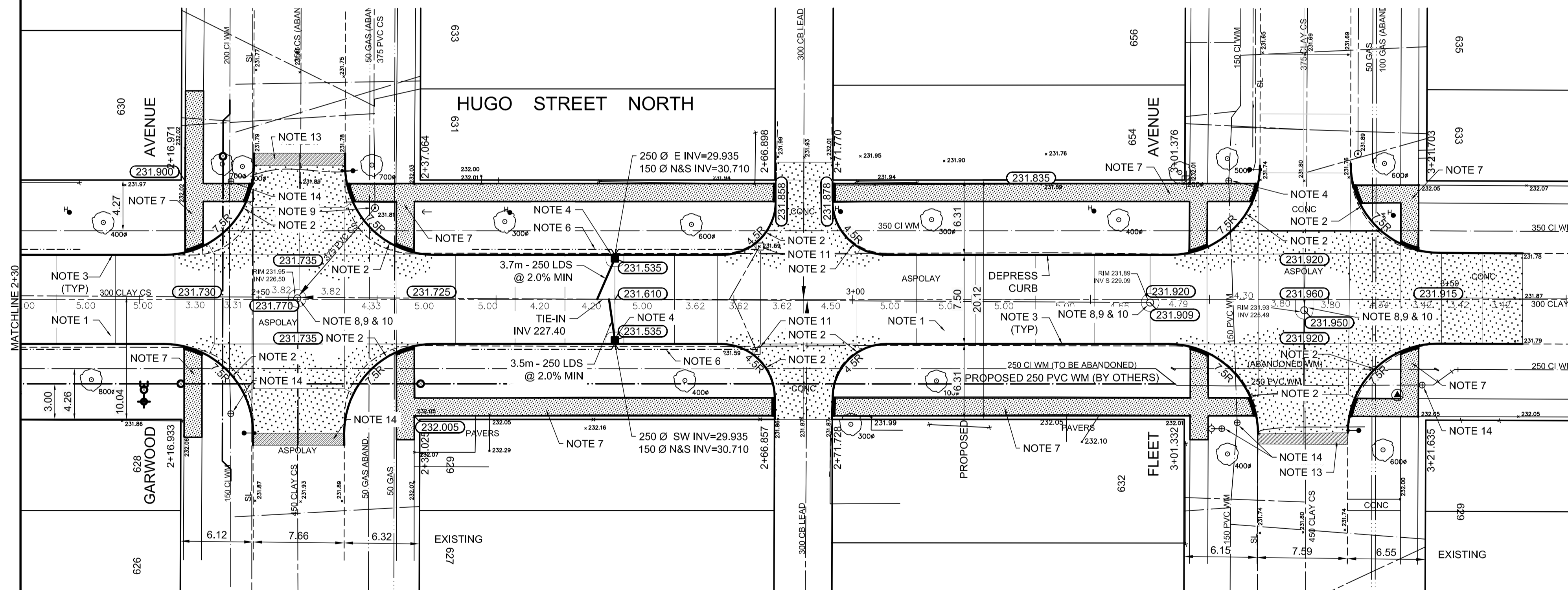
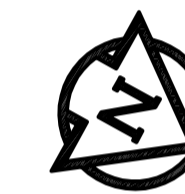


TYPICAL CROSS SECTION



REFERENCE NOTES

- A. PAVEMENT DIMENSIONS ARE TO BACK OF CURB
- B. BASELINE IS CENTRE LINE RIGHT-OF-WAY
- C. PROPERTY LINES OBTAINED FROM CITY OF WINNIPEG L.B.I.S., AND NO SCALE FACTOR WAS APPLIED
- D. REFER TO AECOM FIELD BOOK NO. 4696

CONSTRUCTION NOTES

1. REMOVE EXISTING PAVEMENT AND CONSTRUCT NEW 150mm REINFORCED CONCRETE PAVEMENT
2. CONSTRUCT NEW MODIFIED BARRIER CURB (180mm HT, INTEGRAL)
3. CONSTRUCT NEW BARRIER CURB (180mm HT, SEPARATE)
4. INSTALL NEW CURB AND GUTTER INLET c/w CATCH BASIN (SD-024) AND CONNECT NEW 250mm LEAD TO EXISTING 300mm COMBINED SEWER
5. INSTALL NEW CATCH BASIN (SD-025) AND CONNECT NEW 250mm LEAD TO EXISTING 300mm COMBINED SEWER
6. INSTALL 150mm SUBDRAIN
7. RENEW EXISTING 100mm CONCRETE SIDEWALK
8. REMOVE EXISTING FRAME AND COVER AND PLACE NEW FRAME AND COVER (AP-005)
9. ADJUST EXISTING MANHOLE/CATCHBASIN TO GRADE
10. INSTALL NEW CAST IRON LIFTER RING
11. REMOVE EXISTING CATCHBASIN AND PLUG EXISTING LEAD
12. ADJUST EXISTING WATER VALVE TO GRADE
13. PLACE 50mm ASPHALT PAVEMENT (TYPE 1A)



METRIC
WHOLE NUMBERS INDICATE MILLIMETRES
DECIMALIZED NUMBERS INDICATE METRES

EXISTING	LEGEND - PLAN	PROPOSED	EXISTING	LEGEND - PLAN	PROPOSED	EXISTING	LEGEND - PROFILE	PROPOSED
150 mm W.M.	WATERMAIN	150 mm W.M.	---	HYDRO	---	---	C PROFILE	---
Hydrant symbol	HYDRANT	Hydrant symbol	---	M.T.S.	---	---	NORTH/WEST GUTTER	---
Valve symbol	VALVE	Valve symbol	---	CONCRETE	---	---	SOUTH/EAST GUTTER	---
300mm L.D.S.	LAND DRAINAGE SEWER	300mm L.D.S.	---	ASPHALT	---	---	N/W PROPERTY LINE	---
250mm W.W.S.	WASTEWATER SEWER	250mm W.W.S.	---	PROPERTY LINE	---	---	S/E PROPERTY LINE	---
Manhole symbol	MANHOLE	Manhole symbol	---	SURVEY BAR	---	---		
Catch basin symbol	CATCH BASIN	Catch basin symbol	---	ELEVATION	---	---		
Curb inlet symbol	CURB INLET	Curb inlet symbol	---	TREE	---	---		
Junction symbol	JUNCTIONS	Junction symbol	---	SIDEWALK RAMP	---	---		
Culvert symbol	CULVERT	Culvert symbol	---	CONCRETE SIDEWALK	---	---		
Gas symbol	GAS	Gas symbol	---	FENCE	---	---		

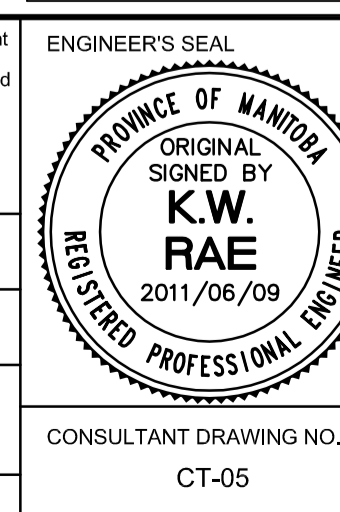
LOCATION APPROVED
UNDERGROUND STRUCTURES

SUPV. U/G STRUCTURES COMMITTEE DATE

NOTE:
LOCATION OF UNDERGROUND STRUCTURES AS SHOWN ARE BASED ON THE BEST INFORMATION AVAILABLE. BUT NO GUARANTEE IS GIVEN THAT ALL EXISTING UTILITIES ARE SHOWN OR THAT THE GIVEN LOCATIONS ARE EXACT. CONFIRMATION OF EXISTENCE AND EXACT LOCATION OF ALL SERVICES MUST BE OBTAINED FROM THE INDIVIDUAL UTILITIES BEFORE PROCEEDING WITH CONSTRUCTION.

B.M.	52-025	S.W. Cor. Cockburn St. & Fleet Ave., Tblt. in N. Conc. foundation of Earl Grey School, 4m E. & 0.3m below brick from N.W. Cor. of school.
ELEV.	232.478	

DESIGNED BY	BC	CHECKED BY	TDW
DRAWN BY	SS	APPROVED BY	KWR
HOR. SCALE:	1:250	RELEASED FOR CONSTRUCTION BY:	
VERTICAL:	1:10	DATE	2011/03/30



THE CITY OF WINNIPEG
PUBLIC WORKS DEPARTMENT
ENGINEERING DIVISION

2011 LOCAL STREET RENEWAL PROGRAM

HUGO STREET NORTH - PEMBINA HWY. TO FLEET AVENUE PAVEMENT RECONSTRUCTION STATION 2+30 TO FLEET AVENUE PLAN/PROFILE

CITY DRAWING NUMBER
SHEET 2 OF 2