

MATCHLINE 4+30

PROPOSED

**REFERENCE NOTES**

- A. PAVEMENT DIMENSIONS ARE TO BACK OF CURB
- B. BASELINE IS CENTRE LINE RIGHT-OF-WAY
- C. PROPERTY LINES OBTAINED FROM CITY OF WINNIPEG L.B.I.S., AND NO SCALE FACTOR WAS APPLIED
- D. REFER TO AECOM FIELD BOOK NO. 4700

**CONSTRUCTION NOTES**

1. REMOVE EXISTING CONCRETE PAVEMENT AND CONSTRUCT NEW 100mm ASPHALTIC PAVEMENT (TYPE 1A)
2. REMOVE EXISTING CONCRETE PAVEMENT AND CONSTRUCT NEW 150mm REINFORCED CONCRETE PAVEMENT c/w 50mm ASPHALT OVERLAY (TYPE 1A)
3. REMOVE EXISTING CONCRETE PAVEMENT AND CONSTRUCT NEW 150mm REINFORCED CONCRETE PAVEMENT
4. REMOVE AND REINSTALL EXISTING PAVING STONES AND CONSTRUCT 150mm HT. CONCRETE BARRIER CURB EDGING
5. CONSTRUCT NEW BARRIER CURB AND GUTTER (180mm HT.)
6. CONSTRUCT NEW LIP CURB AND GUTTER (40mm HT.)
7. CONSTRUCT NEW CURB RAMP AND GUTTER (10mm HT. INTEGRAL)
8. INSTALL NEW CURB AND GUTTER INLET c/w CATCH BASIN (SD-024) AND CONNECT NEW 250mm LEAD TO EXISTING LDS
9. REMOVE EXISTING COVER AND PLACE NEW SOLID COVER (AP-005)
10. REMOVE EXISTING CURB INLET
11. REMOVE EXISTING CATCHBASIN
12. INSTALL 150mm SUBDRAIN
13. ADJUST EXISTING MANHOLE/CATCH BASIN TO GRADE
14. INSTALL NEW CAST IRON RISER RING
15. ADJUST EXISTING WATER VALVE TO GRADE
16. RENEW EXISTING CONCRETE SIDEWALK
17. ADJUST EXISTING CURB STOP



**METRIC**  
WHOLE NUMBERS INDICATE MILLIMETRES  
DECIMALIZED NUMBERS INDICATE METRES

EXISTING	LEGEND - PLAN	PROPOSED	EXISTING	LEGEND - PLAN	PROPOSED	EXISTING	LEGEND - PROFILE	PROPOSED
	WATERMAIN HYDRANT			HYDRO M.T.S.			NORTH/WEST GUTTER	
	VALVE			CONCRETE			SOUTH/EAST GUTTER	
	LAND DRAINAGE SEWER			ASPHALT			N/W PROPERTY LINE	
	WASTEWATER SEWER			PROPERTY LINE			S/E PROPERTY LINE	
	MANHOLE			SURVEY BAR				
	CATCH BASIN			ELEVATION				
	CURB INLET			TREE				
	JUNCTIONS			SIDEWALK RAMP				
	CULVERT			CONCRETE SIDEWALK				
	GAS			FENCE				

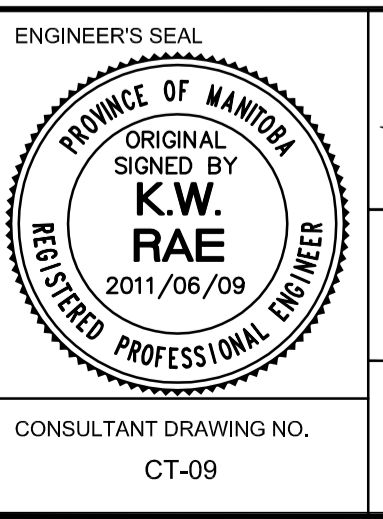
**LOCATION APPROVED UNDERGROUND STRUCTURES**

SUPV. U/G STRUCTURES COMMITTEE DATE

**NOTE:**  
LOCATION OF UNDERGROUND STRUCTURES AS SHOWN ARE BASED ON THE BEST INFORMATION AVAILABLE. BUT NO GUARANTEE IS GIVEN THAT ALL EXISTING UTILITIES ARE SHOWN OR THAT THE GIVEN LOCATIONS ARE EXACT. CONFIRMATION OF EXISTENCE AND EXACT LOCATION OF ALL SERVICES MUST BE OBTAINED FROM THE INDIVIDUAL UTILITIES BEFORE PROCEEDING WITH CONSTRUCTION.

B.M.	82-016	N. side Killarney Ave. E. of Greyfriars Rd., Tbl. in S. Conc. foundation of Acadia Junior High School.
ELEV.	234.106	0.2m E. & 0.1m below tyndall of S.W. Cor. of school.

DESIGNED BY	BC	CHECKED BY	TDW
DRAWN BY	RAM	APPROVED BY	KWR
HOR. SCALE:	1:250	RELEASED FOR CONSTRUCTION BY:	
VERTICAL:	1:10	DATE	2011/03/30



**THE CITY OF WINNIPEG**  
PUBLIC WORKS DEPARTMENT  
ENGINEERING DIVISION

2011 LOCAL STREET RENEWAL PROGRAM

ACADIA BAY- KILLARNEY AVE. TO KILLARNEY AVE.  
PAVEMENT RECONSTRUCTION  
STATION 4+30 TO KILLARNEY AVE. PLAN/PROFILE

CITY DRAWING NUMBER  
SHEET 4 OF 4

CONSULTANT DRAWING NO.  
CT-09