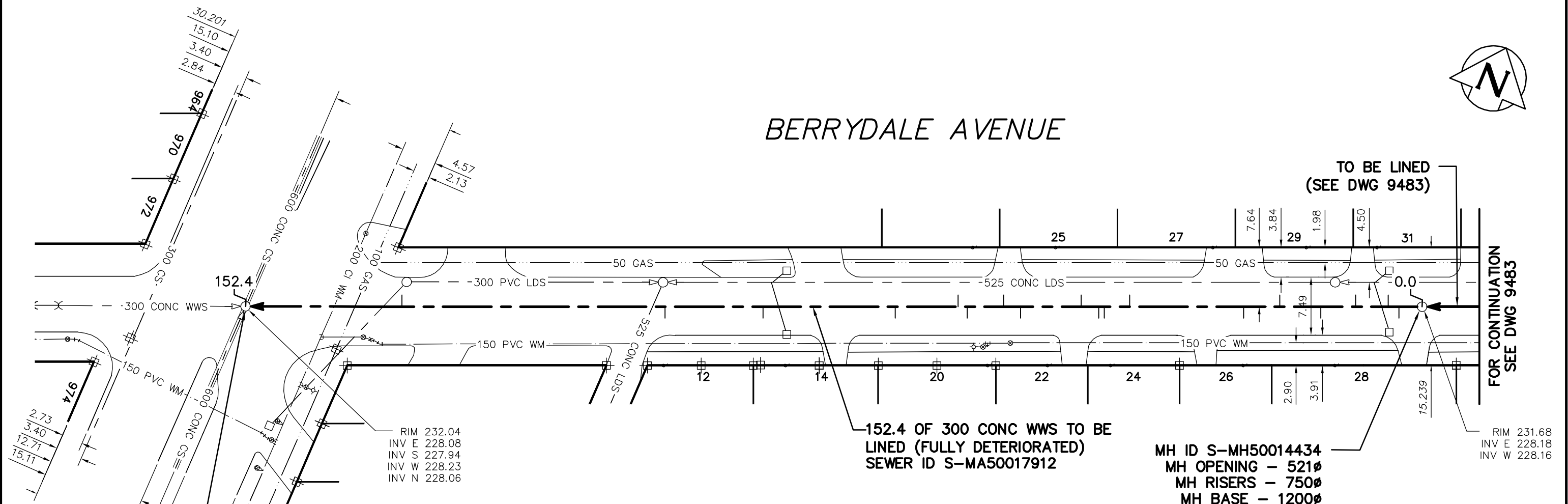




BERRYDALE AVENUE



**MH ID S-MH50009806
MH OPENING - 521Ø
MH RISERS - 750Ø
MH BASE - 1200Ø**

ST MARYS RD

**RIM 232.04
INV E 228.08
INV S 227.94
INV W 228.23
INV N 228.06**

SEWER JUNCTION INFORMATION FROM SEWER VIDEO INSPECTION SEWER ID S-MA50017912

DISTANCE FROM MH ID S-MH50014434				
3.0	W	150Ø	SOUTH	CNI
4.4	W	150Ø	NORTH	CN
8.6	W	150Ø	NORTH	CNI
13.1	W	150Ø	SOUTH	CN
18.4	W	150Ø	NORTH	CN
23.1	W	150Ø	SOUTH	CN
37.8	W	150Ø	NORTH	JN
41.1	W	150Ø	SOUTH	CNI
41.8	W	150Ø	SOUTH	JN
44.1	W	150Ø	NORTH	JN
51.9	W	150Ø	SOUTH	CN
54.1	W	150Ø	NORTH	CN
58.8	W	150Ø	SOUTH	JN
60.0	W	150Ø	NORTH	CNI
68.1	W	150Ø	SOUTH	CN
85.2	W	150Ø	SOUTH	JN
97.9	W	150Ø	SOUTH	CN
131.9	W	150Ø	NORTH	CNI

ENGINEER'S SEAL

**ORIGINAL
SIGNED BY
S.R.J.
COURNOYER
11-03-18**

BID OPPORTUNITY No: 49-2011
FILENAME : 9482_9484.dwg
PLOT DATE : 2011 03 22

LEGEND:
52.0 | MEASUREMENT TO REPAIR FROM REFERENCE MH SHOWN THUS...

METRIC
WHOLE NUMBERS INDICATE MILLIMETRES
DECIMALIZED NUMBERS INDICATE METRES

B.M. ELEV.	FIELD BOOK #:	CITY OF WINNIPEG WATER AND WASTE ENGINEERING DIVISION		THE CITY OF WINNIPEG WATER AND WASTE DEPARTMENT	
POSTED TO LBIS		DESIGNED BY: SC	CHECKED BY: SC	2011 SEWER RENEWALS BY CIPP LINING, CONTRACT 14 BERRYDALE AVENUE 1ST MH E OF ST MARYS ROAD TO MH AT ST MARYS ROAD	
		DRAWN BY: KB	APPROVED BY: KZ	SHEET 6 OF 85 CITY DRAWING NUMBER 9484	
		HOR. SCALE: 1:500	RELEASED FOR CONSTRUCTION: KAS ZUREK		
		VERTICAL	DATE: 2011 03 18	DATE: 11-03-22	