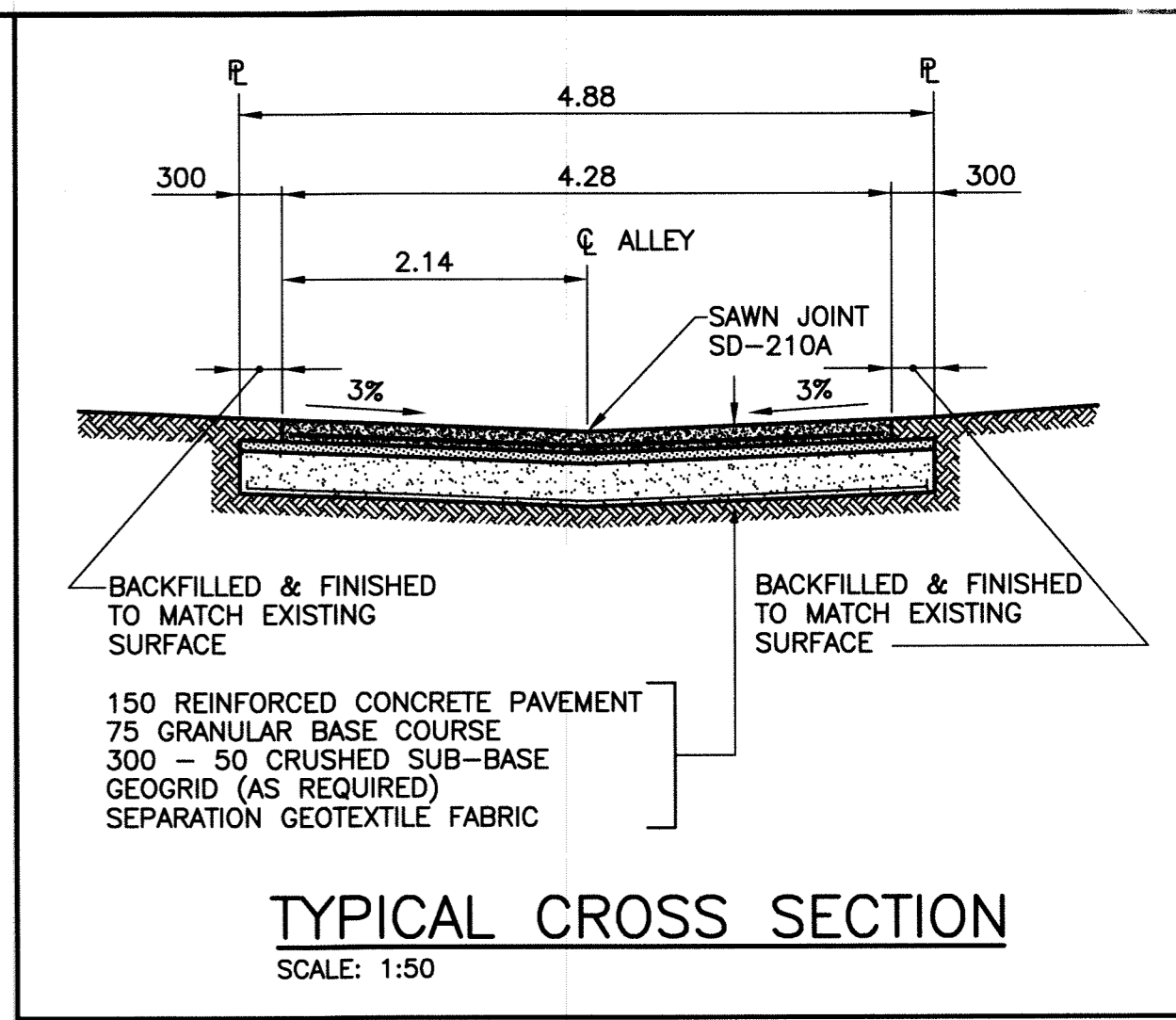


ALLEY PAVEMENT PROFILE

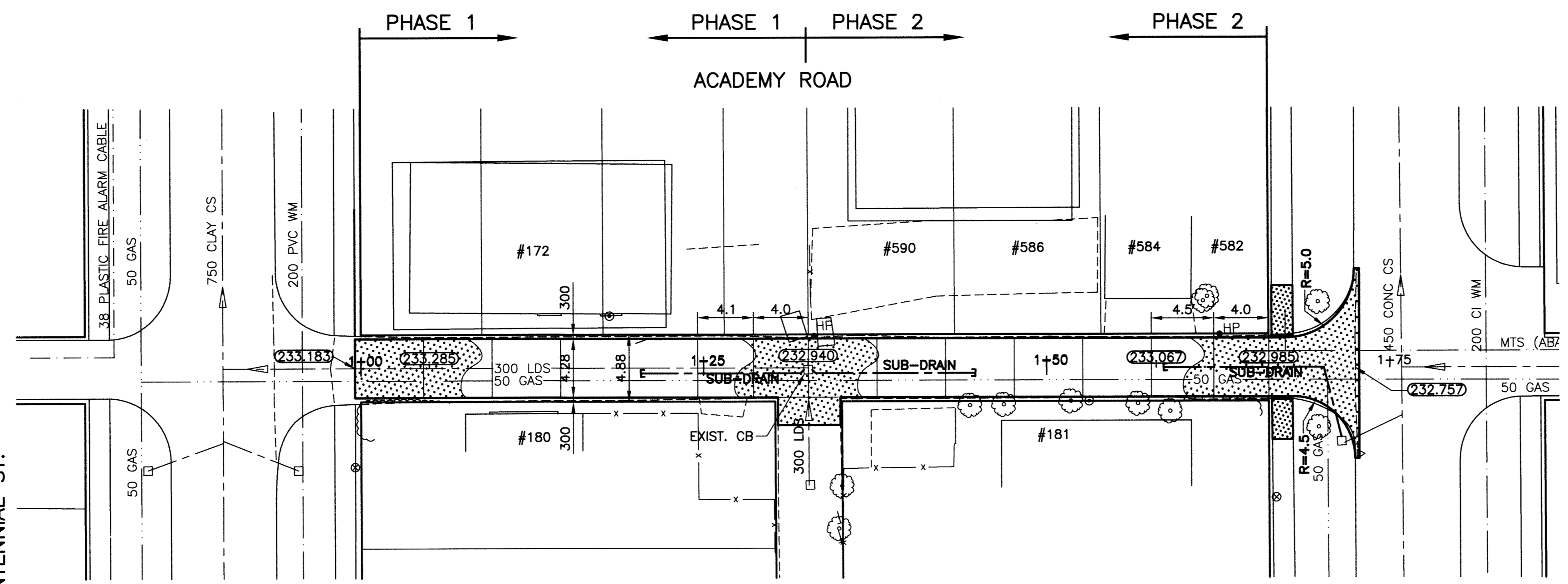
SCALE: 1:250 HOR
1:10 VER

- NOTE:
1. STATION CHAINAGE IS BASED ON CENTERLINE OF ALLEY RIGHT OF WAY.
 2. ADJUST MH AND CB RIMS TO NEW GRADES.
 3. PLUG SUBDRAINS AT TERMINAL ENDS.
 4. REGRADE EXISTING PRIVATE SIDEWALKS AS REQUIRED.
 5. INSTALLATION OF LIP CURBS AND THEIR EXTENTS TO BE DETERMINED BY THE CONTRACT ADMINISTRATOR.
 6. LIGHT STANDARDS, HYDRO POLES AND ANCHORS MAY REQUIRE TEMPORARY SUPPORT/REMOVAL OR REPLACEMENT AT THE CONTRACTOR'S EXPENSE.
 7. ISOLATE ALL POLES, BASES AND PILES WITHIN ALLEY RIGHT OF WAY (SD-228C).
 8. AVOID DAMAGE TO EXISTING TREES WITHIN THE LIMITS OF CONSTRUCTION.



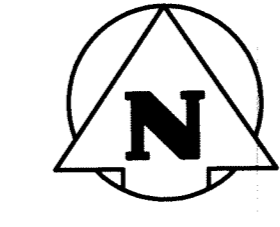
TYPICAL CROSS SECTION

SCALE: 1:50



ALLEY PAVEMENT PLAN

SCALE: 1:250 HOR



PROPERTY LIMITS DELINEATION

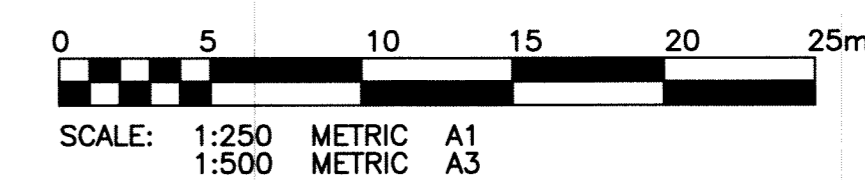
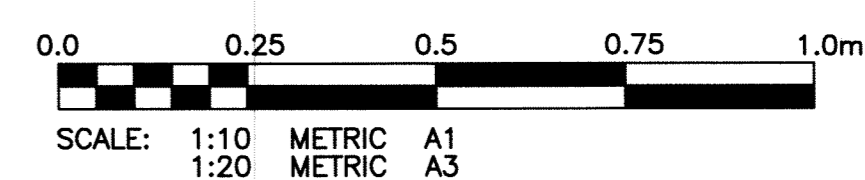
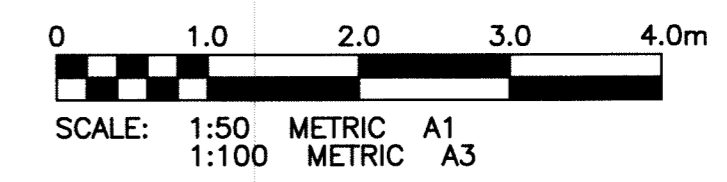
DELINEATION OF PROPERTY LIMITS AS SHOWN ON THIS DWG DOES NOT REPRESENT A "LEGAL SURVEY". KGS GROUP MAKES NO REPRESENTATION OR WARRANTY AS TO THE ACCURACY OF PROPERTY LIMITS DELINEATED ON THIS DWG, NOR ON THE DIMENSIONAL ACCURACY OF DWG FEATURES RELATIVE TO THOSE PROPERTY LIMITS.

WARNING

IF POWER EQUIPMENT OR EXPLOSIVES ARE TO BE USED FOR EXCAVATION ON THIS PROJECT THE CONTRACTOR MUST:
1) NOTIFY THE GAS COMPANY OF THE PROPOSED LOCATION OF EXCAVATION.
2) TAKE PRECAUTION TO AVOID DAMAGE TO GAS COMPANY INSTALLATIONS.
SEE PROVINCIAL REGULATION 210/72 FOR DETAILS.

METRIC

WHOLE NUMBERS INDICATE MILLIMETRES
DECIMALIZED NUMBERS INDICATE METRES



P:\Projects\2011\11-0107-10\Doc\Control\Tobias\DWG\11-0107-10_01-Rev 0.dwg - Tab: 01 Plotted By: DDeoche 06/28/2011 [Tue 9:01am] PLOT 1:1 A-1

EXISTING	LEGEND-PLAN	PROPOSED	EXISTING	LEGEND-PLAN	PROPOSED	EXISTING	LEGEND-PROFILE	PROPOSED
300 LDS	LAND DRAINAGE SEWER	300 LDS	300 WWS	WASTE WATER SEWER	300 WWS	⊕	TEST HOLE	
50 GAS	GAS	50 GAS	50 GAS	HYDRO	50 GAS	— —	GUY WIRE	
150 WM	WATERMAIN	150 WM	150 WM	M.T.S.	150 WM	— —	LIGHT STANDARD	
⊕	HYDRANT	⊕	⊕	BACK OF CURB	⊕	— —	CONCRETE	
⊕	VALVE	⊕	⊕	ASPHALT	⊕	— —	ASPHALT	
⊕	MANHOLE	⊕	⊕	PROPERTY LINE	⊕	— —	SIDEWALK	
⊕	CATCH BASIN	⊕	⊕	SURVEY BAR	⊕	— —	PROPERTY LINE	
⊕	CURB INLET	⊕	⊕	GEODETIC BENCHMARK	⊕	— —	SURVEY BAR	
•	POLES	•	•	ELEVATION	•	— —	GEODETIC BENCHMARK	
						231.334		

LOCATION APPROVED UNDERGROUND STRUCTURES

SUPV. U/G STRUCTURES COMMITTEE DATE

NOTE:
LOCATION OF UNDERGROUND STRUCTURES AS SHOWN ARE BASED ON THE BEST INFORMATION AVAILABLE BUT NO GUARANTEE IS GIVEN THAT ALL EXISTING UTILITIES ARE SHOWN OR THAT THE GIVEN LOCATIONS ARE EXACT. CONFIRMATION OF EXISTENCE AND EXACT LOCATION OF ALL SERVICES MUST BE OBTAINED FROM THE INDIVIDUAL UTILITIES BEFORE PROCEEDING WITH CONSTRUCTION.

B.M. ELEV.	51-044 234.311	261 (854261) - Toll, in 33m Conc. pile beneath Valve Box marked S.M. (B.M.) Lockwood St. & Centennial St. 9.7m E. of C.L. Track & 17.8m N. of S.L. Academy Rd.
DESIGNED BY	MSM	CHECKED BY RBO
DRAWN BY	DMW	APPROVED BY [Signature]
HOR. SCALE:	1:250	RELEASED FOR CONSTRUCTION:
VERTICAL:	1:50	
ISSUED FOR TENDER	11/06/27	MSM
NO. REVISIONS	DATE	BY
		11/06/06

KGS GROUP
CONSULTING ENGINEERS

Certificate of Authorization
KGS Group
No. 245

ENGINEER'S SEAL

PROVINCE OF MANITOBA
M.S.
MANZANO
Member
122304
Professional Engineer

CONSULTANT DRAWING NO.
11-0107-10

THE CITY OF WINNIPEG
PUBLIC WORKS DEPARTMENT
TRANSPORTATION ENGINEERING DIVISION

PROJECT TITLE
2011 ALLEY RENEWAL PROGRAM
ACADEMY RD. SOUTH
CENTENNIAL ST. TO BEAVERBROOK ST.
STA. 1+00 TO STA. 1+75

SHEET OF 18
COMPUTER FILE NAME
1-ACADEMY SOUTH
CITY DRAWING NUMBER
P-XX01