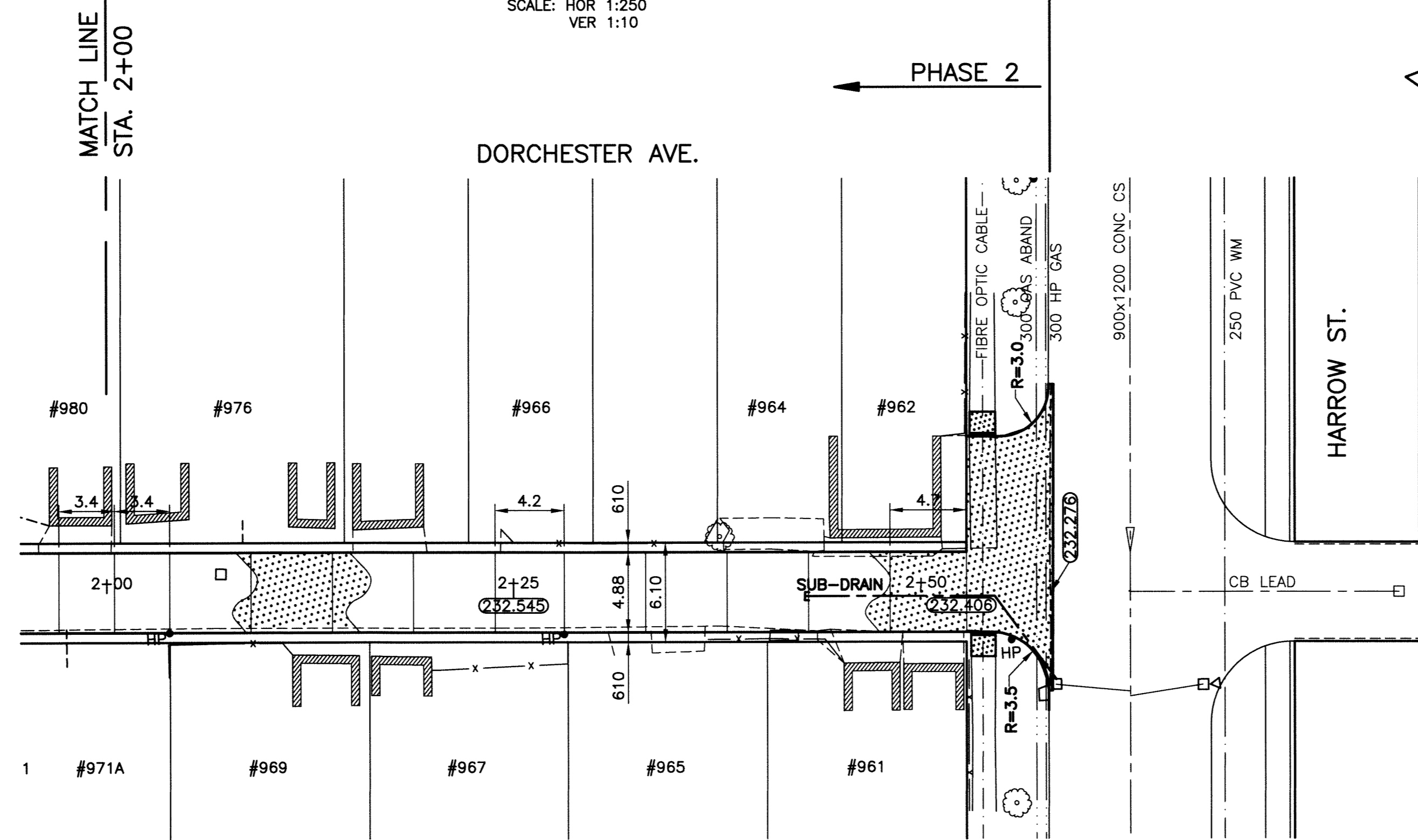
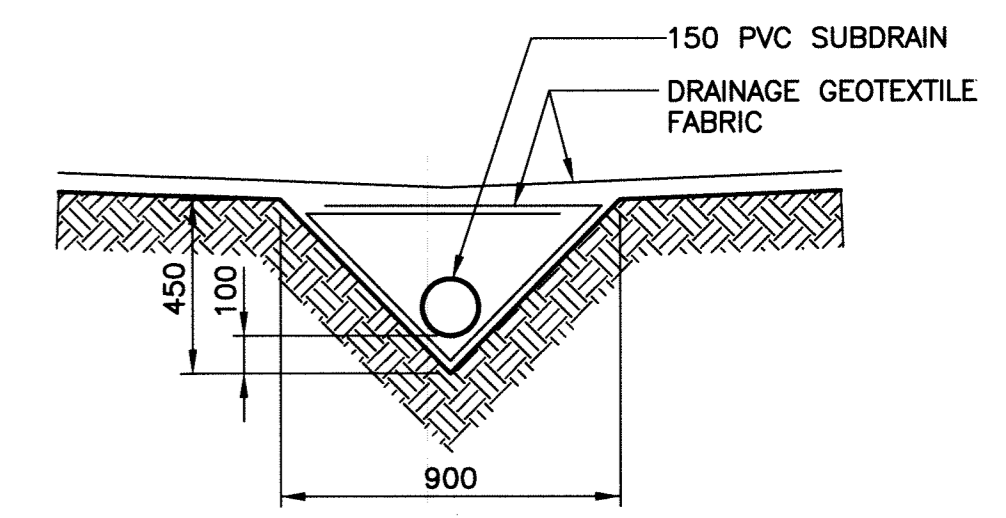
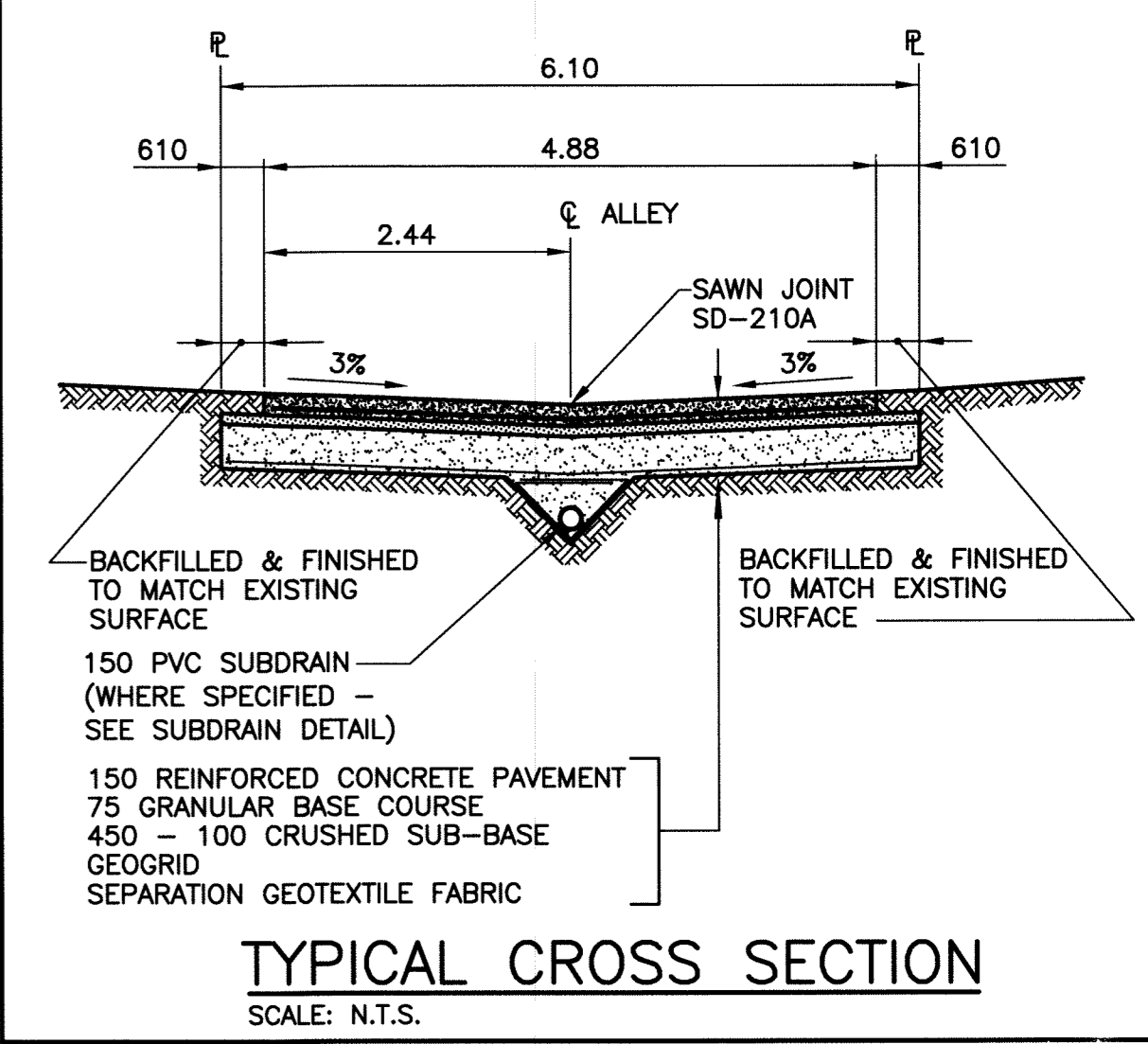


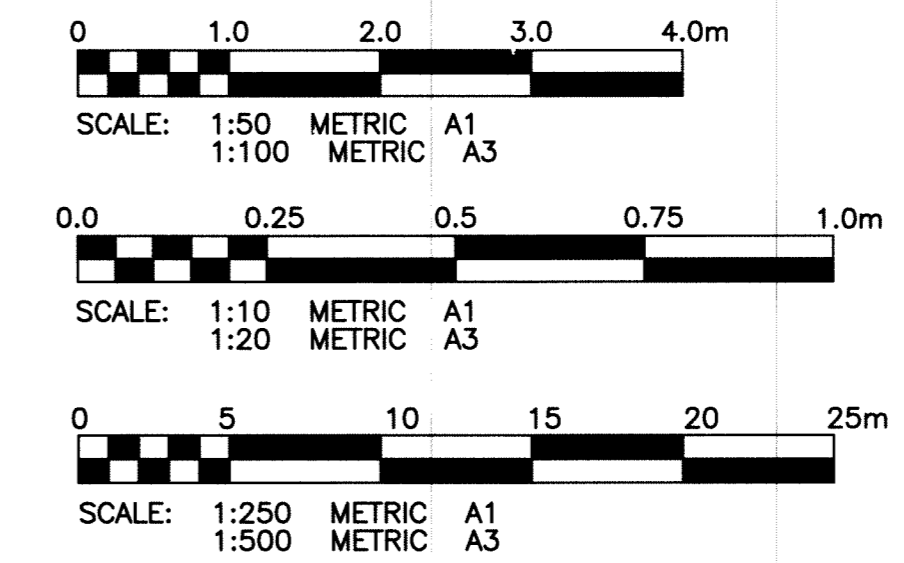
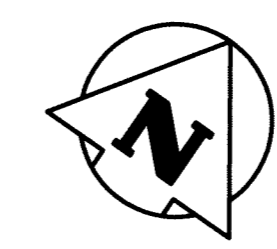
ALLEY PAVEMENT PROFILE
SCALE: HOR 1:250
VER 1:10



ALLEY PAVEMENT PLAN
SCALE: HOR 1:250



- NOTE:**
1. STATION CHAINAGE IS BASED ON CENTERLINE OF ALLEY RIGHT OF WAY.
 2. ADJUST MH AND CB RIMS TO NEW GRADES.
 3. PLUG SUBDRAINS AT TERMINAL ENDS.
 4. REGRADE EXISTING PRIVATE SIDEWALKS AS REQUIRED.
 5. INSTALLATION OF LIP CURBS AND THEIR EXTENTS TO BE DETERMINED BY THE CONTRACT ADMINISTRATOR.
 6. LIGHT STANDARDS, HYDRO POLES AND ANCHORS MAY REQUIRE TEMPORARY SUPPORT/REMOVAL OR REPLACEMENT AT THE CONTRACTOR'S EXPENSE.
 7. ISOLATE ALL POLES, BASES AND PILES WITHIN ALLEY RIGHT OF WAY (SD-228C).
 8. AVOID DAMAGE TO EXISTING TREES WITHIN THE LIMITS OF CONSTRUCTION.



PROPERTY LIMITS DELINEATION

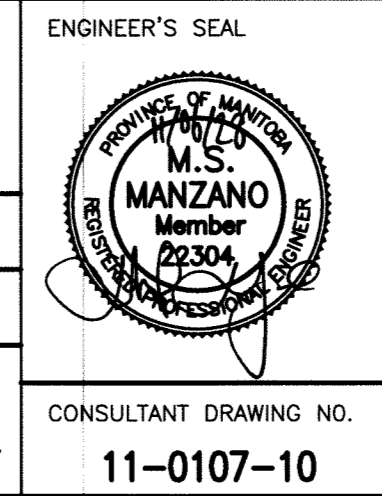
DELINEATION OF PROPERTY LIMITS AS SHOWN ON THIS DWG DOES NOT REPRESENT A "LEGAL SURVEY". KGS GROUP MAKES NO REPRESENTATION OR WARRANTY AS TO THE ACCURACY OF PROPERTY LIMITS DELINEATED ON THIS DWG, NOR ON THE DIMENSIONAL ACCURACY OF DWG FEATURES RELATIVE TO THOSE PROPERTY LIMITS.

WARNING

1. NOTIFY THE GAS COMPANY OF THE PROPOSED LOCATION OF EXCAVATION.
2. TAKE PRECAUTION TO AVOID DAMAGE TO GAS COMPANY INSTALLATIONS.
3. SEE PROVINCIAL REGULATION 210/72 FOR DETAILS.

METRIC

WHOLE NUMBERS INDICATE MILLIMETRES
DECIMALIZED NUMBERS INDICATE METRES



THE CITY OF WINNIPEG
PUBLIC WORKS DEPARTMENT
TRANSPORTATION ENGINEERING DIVISION

PROJECT TITLE: **2011 ALLEY RENEWAL PROGRAM**
DORCHESTER AVE./MCMILLAN AVE.
GUELPH ST. TO HARROW ST.
STA. 2+00 TO STA. 2+55

SHEET OF **03** OF **18**
COMPUTER FILE NAME: **McMILLAN_DORCHESTER**
CITY DRAWING NUMBER: **P-XX03**

300 LDS	LAND DRAINAGE SEWER	300 LDS		TEST HOLE			
250 WWS	WASTE WATER SEWER	250 WWS	+	GUY WIRE			
	GAS		→	LIGHT STANDARD			
	HYDRO		---	BACK OF CURB			
	M.T.S.		---	CONCRETE			
150 WM	WATERMAIN	150 WM	---	ASPHALT			
+	HYDRANT		+	SIDEWALK			
+	VALVE		+	PROPERTY LINE			
○	MANHOLE		○	SURVEY BAR			
□	CATCH BASIN		□	GEODETC BENCHMARK			
▽	CURB INLET		▽	ELEVATION			
•	POLES T-MTS H-HYDRO		•	231.334			
EXISTING	LEGEND-PLAN	PROPOSED	EXISTING	LEGEND-PLAN	PROPOSED	EXISTING	LEGEND-PROFILE

LOCATION APPROVED UNDERGROUND STRUCTURES

SUPV. U/G STRUCTURES COMMITTEE DATE

NOTE:
LOCATION OF UNDERGROUND STRUCTURES AS SHOWN ARE BASED ON THE BEST INFORMATION AVAILABLE BUT NO GUARANTEE IS GIVEN THAT ALL EXISTING UTILITIES ARE SHOWN OR THAT THE GIVEN LOCATIONS ARE EXACT. CONFIRMATION OF EXISTENCE AND EXACT LOCATION OF ALL SERVICES MUST BE OBTAINED FROM THE INDIVIDUAL UTILITIES BEFORE PROCEEDING WITH CONSTRUCTION.

B.M. 52-039
ELEV. 232.480
S.W. Cor. Grosvenor Ave. & Wilson St. Tbl. in N. Conc. wall of St. George's Anglican Church, No. 1116 Grosvenor Ave. 1.0m & 0.5m below typical stone of N.W. Cor. of Church

DESIGNED BY	MSM	CHECKED BY	RBO
DRAWN BY	DMW	APPROVED BY	RJR
HOR. SCALE:	1:250	RELEASED FOR CONSTRUCTION:	
VERTICAL:	1:50	DATE	11/06/09

0 ISSUED FOR TENDER 11/06/09
NO. REVISIONS DATE BY

KGS GROUP
CONSULTING ENGINEERS

DESIGNED BY: MSM
DRAWN BY: DMW
CHECKED BY: RBO
APPROVED BY: RJR
DATE: 11/06/09

P:\PROJECTS\2011\11-0107-10\DWG\MUN\2-McMILLAN_DORCHESTER_PLOT.dwg PLOT 1: A-1