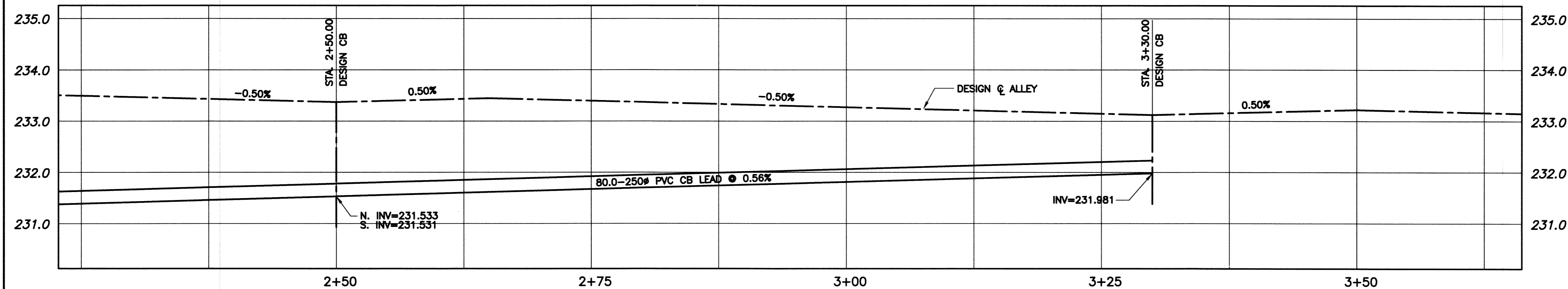


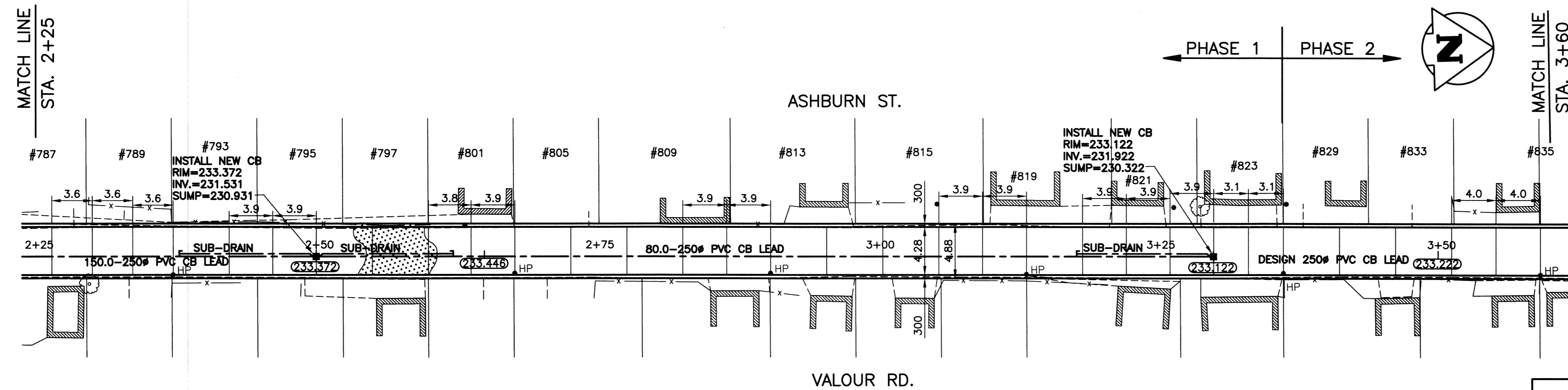
ALLEY PAVEMENT PROFILE

SCALE: HOR 1:250
VER 1:10



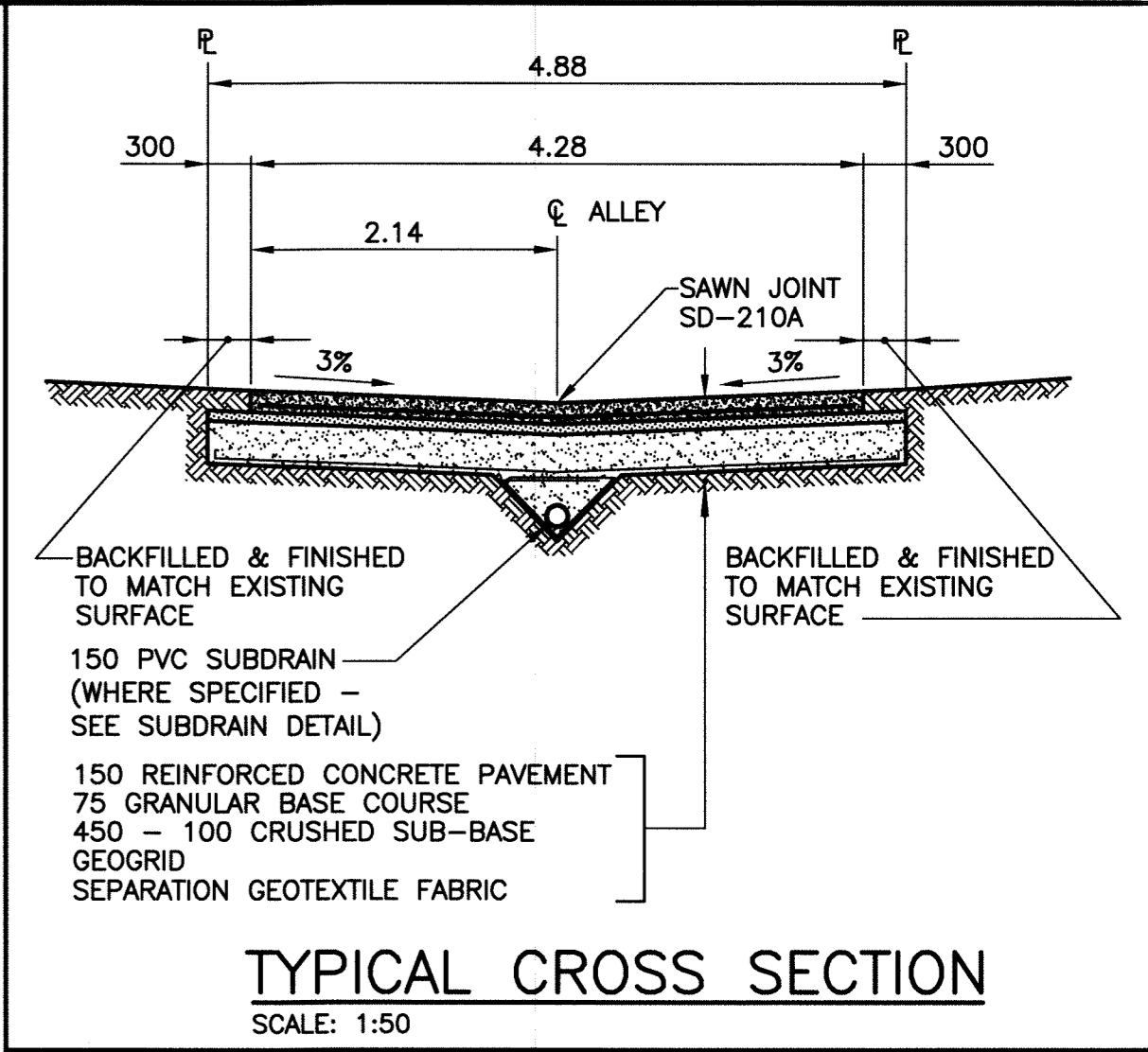
CATCH BASIN & CATCH BASIN LEAD PROFILE

SCALE: HOR 1:250
VER 1:50



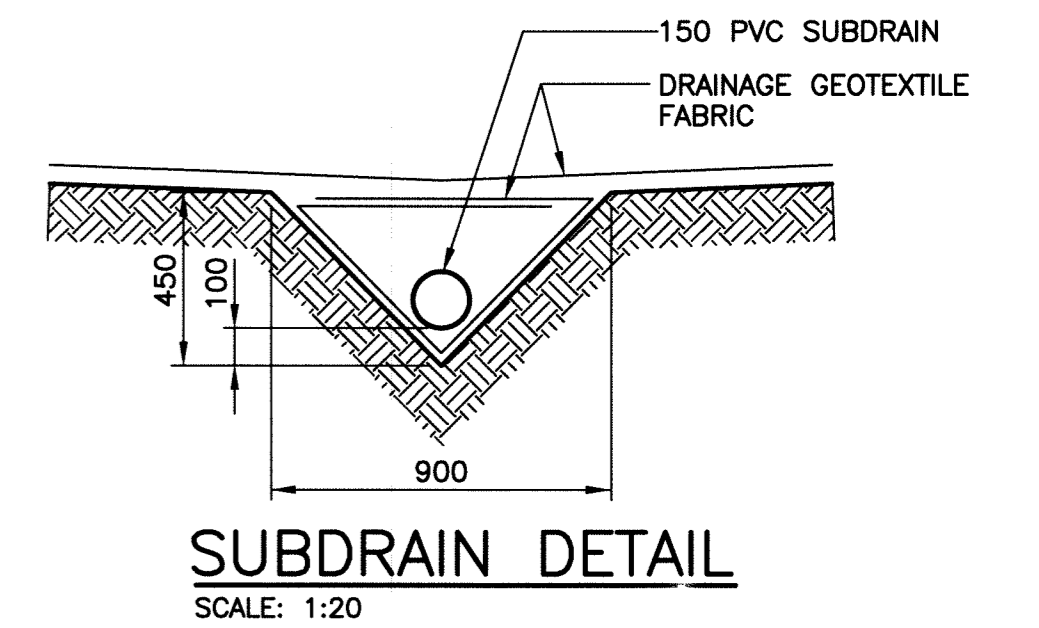
ALLEY PAVEMENT PLAN

SCALE: HOR 1:250



TYPICAL CROSS SECTION

SCALE: 1:50



SUBDRAIN DETAIL

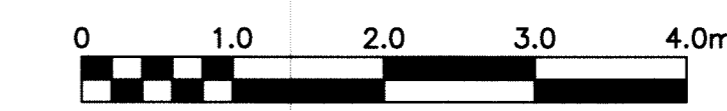
SCALE: 1:20

NOTE:

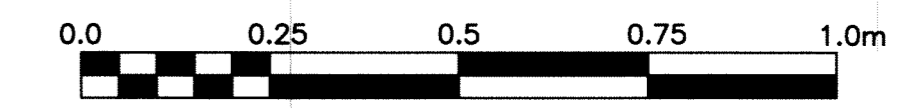
1. STATION CHAINAGE IS BASED ON CENTERLINE OF ALLEY RIGHT OF WAY.
2. ADJUST MH AND CB RIMS TO NEW GRADES.
3. PLUG SUBDRAINS AT TERMINAL ENDS.
4. REGRADE EXISTING PRIVATE SIDEWALKS AS REQUIRED.
5. INSTALLATION OF LIP CURBS AND THEIR EXTENTS TO BE DETERMINED BY THE CONTRACT ADMINISTRATOR.
6. LIGHT STANDARDS, HYDRO POLES AND ANCHORS MAY REQUIRE TEMPORARY SUPPORT/REMOVAL OR REPLACEMENT AT THE CONTRACTOR'S EXPENSE.
7. ISOLATE ALL POLES, BASES AND PILES WITHIN ALLEY RIGHT OF WAY (SD-228C)
8. AVOID DAMAGE TO EXISTING TREES WITHIN THE LIMITS OF CONSTRUCTION.

PROPERTY LIMITS DELINEATION

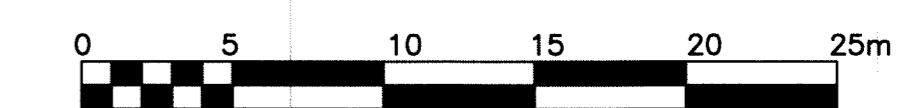
DELINEATION OF PROPERTY LIMITS AS SHOWN ON THIS DWG DOES NOT REPRESENT A "LEGAL SURVEY". KGS GROUP MAKES NO REPRESENTATION OR WARRANTY AS TO THE ACCURACY OF PROPERTY LIMITS DELINEATED ON THIS DWG, NOR ON THE DIMENSIONAL ACCURACY OF DWG FEATURES RELATIVE TO THOSE PROPERTY LIMITS.



SCALE: 1:500 METRIC A1
1:100 METRIC A3



SCALE: 1:10 METRIC A1
1:20 METRIC A3



SCALE: 1:250 METRIC A1
1:500 METRIC A3

WARNING

1. NOTIFY THE GAS COMPANY OF THE PROPOSED LOCATION OF EXCAVATION.
2. TAKE PRECAUTION TO AVOID DAMAGE TO GAS COMPANY INSTALLATIONS.
3. SEE PROVINCIAL REGULATION 210/72 FOR DETAILS.



METRIC
WHOLE NUMBERS INDICATE MILLIMETRES
DECIMALIZED NUMBERS INDICATE METRES

EXISTING	LEGEND-PLAN	PROPOSED	EXISTING	LEGEND-PLAN	PROPOSED	EXISTING	LEGEND-PROFILE	PROPOSED
300 L.D.S.	LAND DRAINAGE SEWER	300 L.D.S.	⊕	TEST HOLE				
250 WWS	WASTE WATER SEWER	250 WWS	—	GUY WIRE				
	GAS		—	LIGHT STANDARD				
	HYDRO		—	BACK OF CURB				
	M.T.S.		—	CONCRETE				
150 WM	WATERMAIN	150 WM	—	ASPHALT				
⊕	HYDRANT	⊕	—	SIDEWALK				
⊙	VALVE	⊙	—	PROPERTY LINE				
○	MANHOLE	○	—	SURVEY BAR				
□	CATCH BASIN	□	—	GEODETIC BENCHMARK				
▽	CURB INLET	▽	—	ELEVATION	(32.231)	TTTTT	Q PROFILE	---
•	POLES	•	—					

LOCATION APPROVED UNDERGROUND STRUCTURES

SUPV. U/G STRUCTURES COMMITTEE DATE
NOTE: LOCATION OF UNDERGROUND STRUCTURES AS SHOWN ARE BASED ON THE BEST INFORMATION AVAILABLE BUT NO GUARANTEE IS GIVEN THAT THE GIVEN LOCATIONS ARE EXACT. CONFIRMATION OF EXISTENCE AND EXACT LOCATION OF ALL SERVICES MUST BE OBTAINED FROM THE INDIVIDUAL UTILITIES BEFORE PROCEEDING WITH CONSTRUCTION.

B.M. ELEV.	51-044 234.311	261 (654261) - 10ft. in 3.8m Conc. pile beneath Valve Box marked S.M., 8th & Lockwood St. & Centennial St. 9.7m E. of C.L. Track & 17.6m N. of S.L. Academy Rd.
ISSUED FOR TENDER	11/06/27	MSM
NO. REVISIONS	DATE	BY

DESIGNED BY	MSM	CHECKED BY	RBO
DRAWN BY	DMW	APPROVED BY	[Signature]
HOR. SCALE:	1:250	RELEASED FOR CONSTRUCTION:	
VERTICAL:	1:50	DATE	11/06/09

ENGINEER'S SEAL
CONSULTANT DRAWING NO. 11-0107-10

THE CITY OF WINNIPEG
PUBLIC WORKS DEPARTMENT
TRANSPORTATION ENGINEERING DIVISION

PROJECT TITLE: 2011 ALLEY RENEWAL PROGRAM
SHEET OF 15
COMPUTER FILE NAME: ASHBURN_VALOR
CITY DRAWING NUMBER: P-XX10

ASHBURN ST./VALOUR RD.
WOLEVER AVE. TO ST. MATTHEWS AVE.
STA. 2+25 TO STA. 3+60

P:\PROJECTS\2011\11-0107-10\MUN\5-ASHBURN_VALOUR_PLOT.dwg
PLOT 1:1 A-1