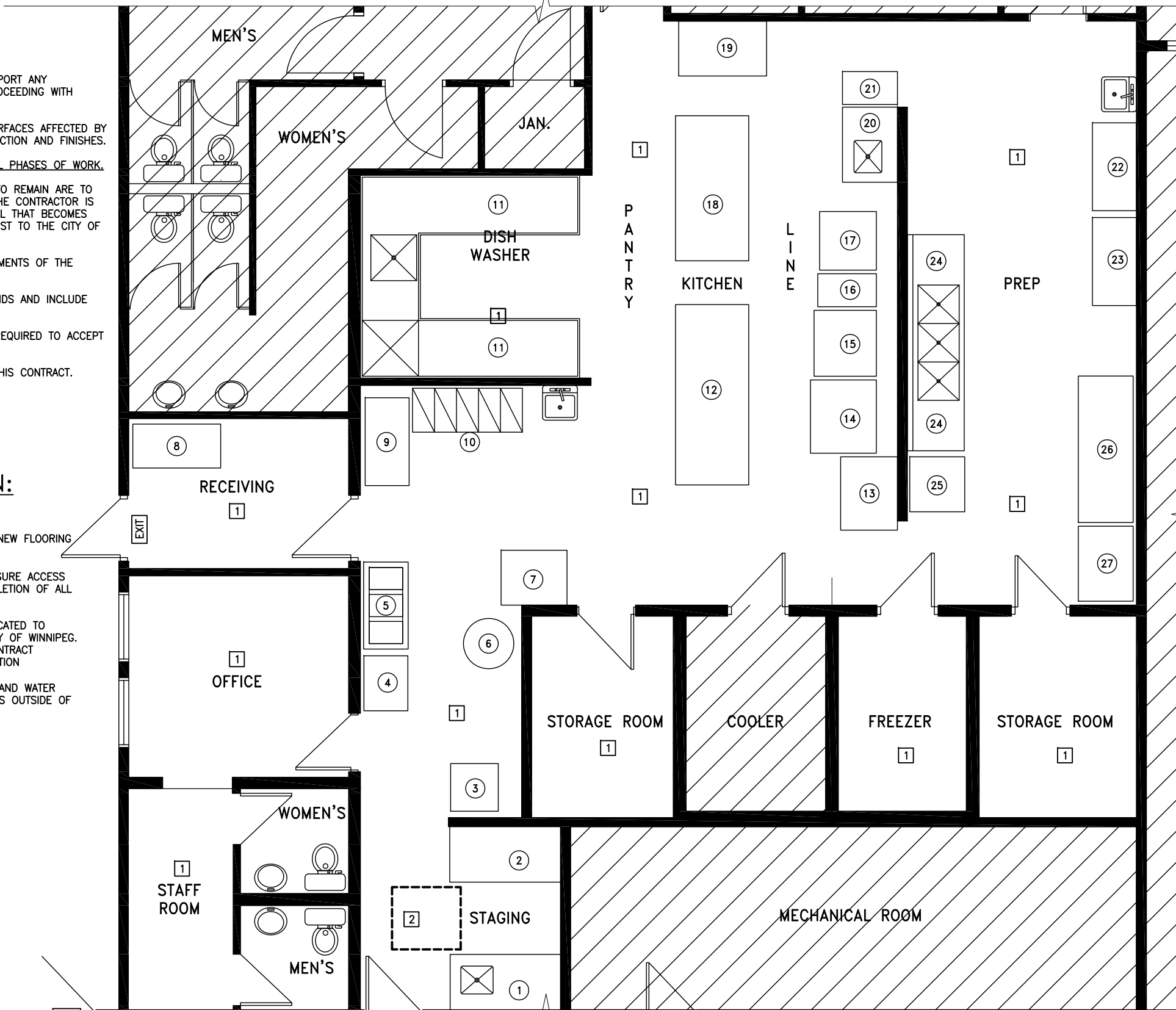


**NEW CONSTRUCTION NOTES:
GENERAL**

1. CONTRACTOR TO VERIFY ALL DIMENSIONS ON SITE AND REPORT ANY DISCREPANCIES TO CONTRACT ADMINISTRATORS BEFORE PROCEEDING WITH WORK.
2. CONTRACTOR TO PATCH, REPAIR, AND MAKE GOOD ALL SURFACES AFFECTED BY DEMOLITION PRIOR TO THE INSTALLATION OF NEW CONSTRUCTION AND FINISHES.
3. EXISTING FIRE SEPARATIONS TO BE MAINTAINED DURING ALL PHASES OF WORK.
4. EXISTING FINISHES, SURFACES, AND MATERIALS THAT ARE TO REMAIN ARE TO BE PROTECTED DURING DEMOLITION AND CONSTRUCTION. THE CONTRACTOR IS TO REPAIR OR REPLACE ANY FINISH SURFACE, OR MATERIAL THAT BECOMES DAMAGED DURING THE CONSTRUCTION PROCESS, AT NO COST TO THE CITY OF WINNIPEG.
5. NEW CONSTRUCTION MUST MEET OR EXCEED THE REQUIREMENTS OF THE LATEST VERSION OF THE NATIONAL BUILDING CODE.
6. CONTRACTOR TO CHECK THE SITE PRIOR TO SUBMITTING BIDS AND INCLUDE ALL WORK NECESSARY FOR COMPLETE INSTALLATION.
7. CONTRACTOR TO PATCH AND REPAIR EXISTING FLOOR AS REQUIRED TO ACCEPT NEW FINISHES AS SPECIFIED FINISHES PLAN.
8. KITCHEN EQUIPMENT LAYOUT FOR REFERENCE ONLY FOR THIS CONTRACT.

**TYPICAL NEW CONSTRUCTION:
KEY NOTE LEGEND**

1. CONTRACTOR TO PATCH AND REPAIR FLOOR TO ACCEPT NEW FLOORING AS INDICATED ON NEW FLOORING/FINISHES PLAN.
2. FLOOR ACCESS PANEL TO REMAIN. CONTRACTOR TO ENSURE ACCESS PANEL AND NEW TILE FLOOR REMAIN LEVEL UPON COMPLETION OF ALL WORK.
3. EXISTING KITCHEN EQUIPMENT TO BE REMOVED OR RELOCATED TO ACCOMMODATE INSTALLATION OF NEW FLOOR TILE BY CITY OF WINNIPEG. CONTRACTOR TO COORDINATE EXTENT OF WORK WITH CONTRACT ADMINISTRATOR PRIOR TO COMMENCEMENT OF CONSTRUCTION
4. CITY OF WINNIPEG TO COORDINATE ALL GAS/ELECTRICAL AND WATER CONNECTIONS TO BE RECONNECTED. SCOPE OF WORK IS OUTSIDE OF THIS CONTRACT.



EQUIPMENT KITCHEN LEGEND

1. FIXED - STAINLESS STEEL WORK COUNTER
2. FIXED - STAINLESS STEEL WORK COUNTER
3. FIXED - ICE MAKER c/w WATER CONNECTION
4. MOVEABLE - STAINLESS STEEL WORK COUNTER
5. MOVEABLE - STEAM TABLE
6. FIXED - HOT WATER TANK c/w WATER CONNECTION
7. FIXED - STAINLESS STEEL WORK COUNTER
8. MOVEABLE - WIRE STORAGE SHELVES
9. MOVEABLE - WIRE STORAGE SHELVES
10. FIXED - STAFF LOCKERS
11. FIXED - COMMERCIAL DISHWASHER
12. FIXED - STAINLESS STEEL WORK COUNTER c/w ELECTRICAL CONNECTION
13. FIXED - STAINLESS STEEL WORK COUNTER
14. FIXED - CONVECTION OVEN c/w ELECTRICAL CONNECTION
15. FIXED - SAUTE STATION GRILLE c/w ELECTRICAL AND GAS CONNECTIONS
16. FIXED - DEEP FRYER c/w ELECTRICAL AND GAS CONNECTIONS
17. FIXED - BROILER GRILLE c/w ELECTRICAL AND GAS CONNECTIONS
18. FIXED - STAINLESS STEEL WORK COUNTER c/w ELECTRICAL CONNECTION
19. FIXED - STAINLESS STEEL WORK COUNTER c/w ELECTRICAL AND WATER CONNECTION
20. FIXED - STAINLESS STEEL HAND SINK
21. FIXED - STAINLESS STEEL WORK COUNTER c/w STEAMER - ELECTRICAL AND WATER CONNECTION
22. MOVEABLE - WIRE STORAGE SHELVES
23. MOVEABLE - WIRE STORAGE SHELVES
24. FIXED - TRIPLE SOAKER SINK
25. FIXED - PROOFER c/w ELECTRICAL CONNECTION
26. FIXED - STAINLESS STEEL WORK COUNTER
27. MOVEABLE PAN RACK STAND

1 NEW CONSTRUCTION PLAN / KITCHEN EQUIPMENT LAYOUT
ID-2.0 SCALE: 3/16" = 1'-0"