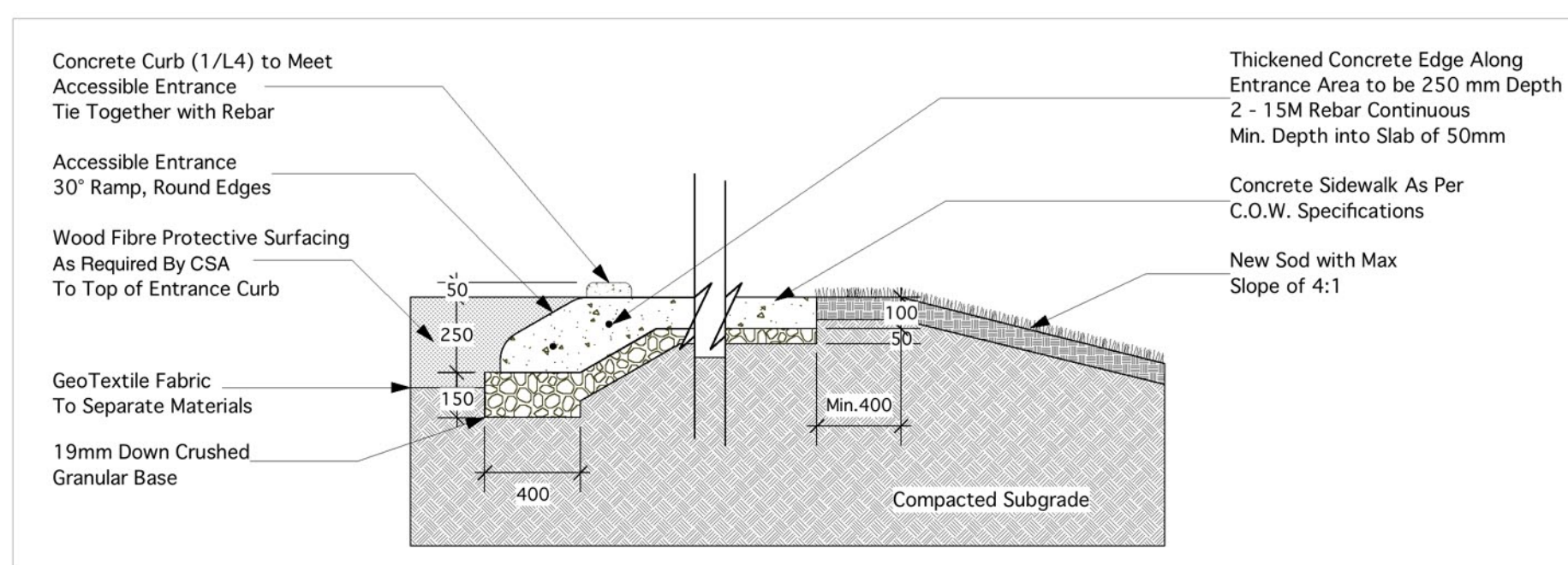
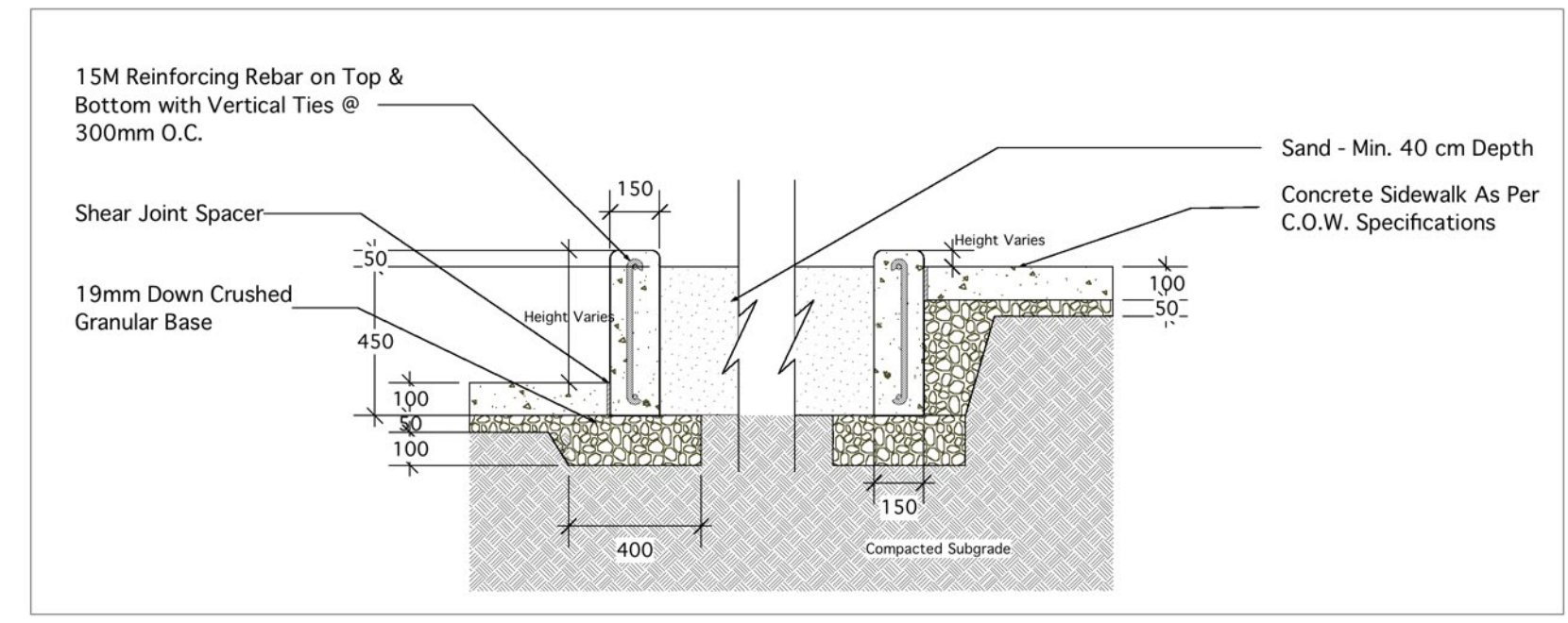


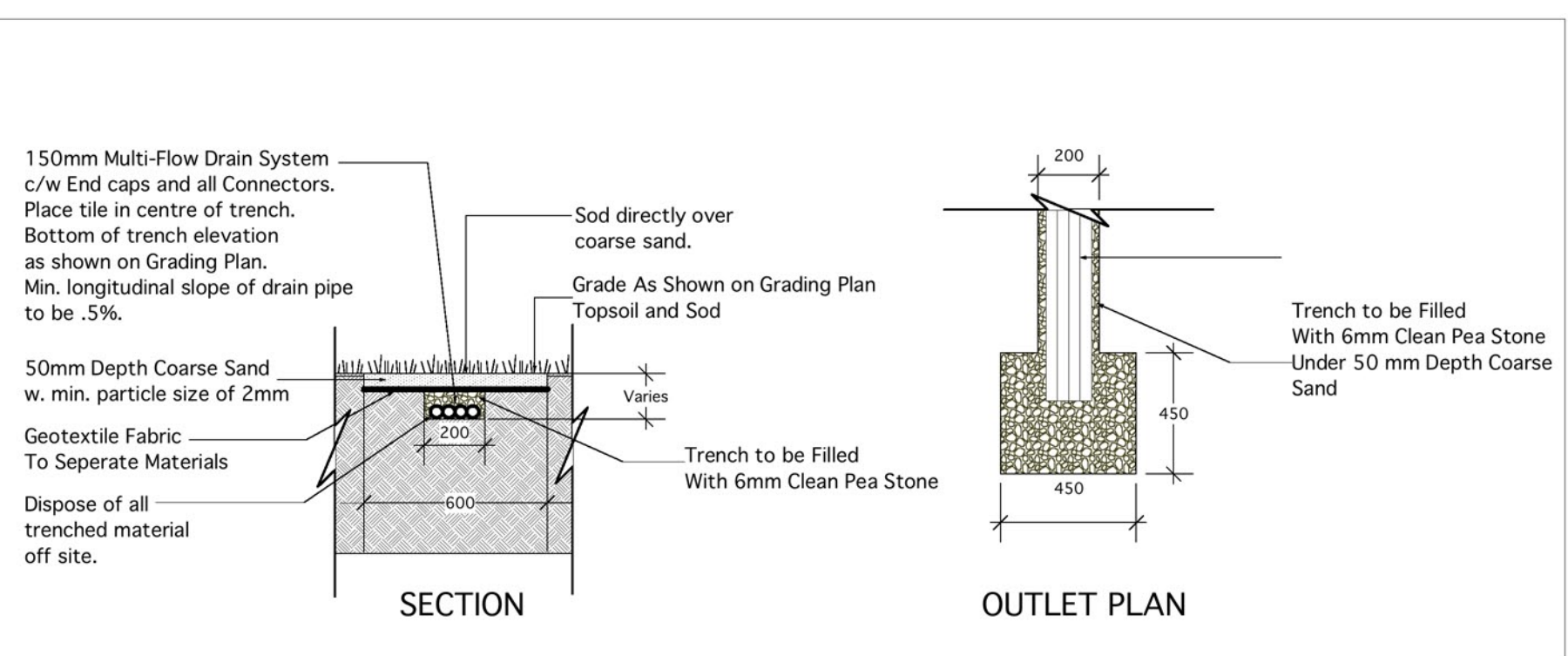
1 CONCRETE CURB / EDGING DETAIL
L4 1:20



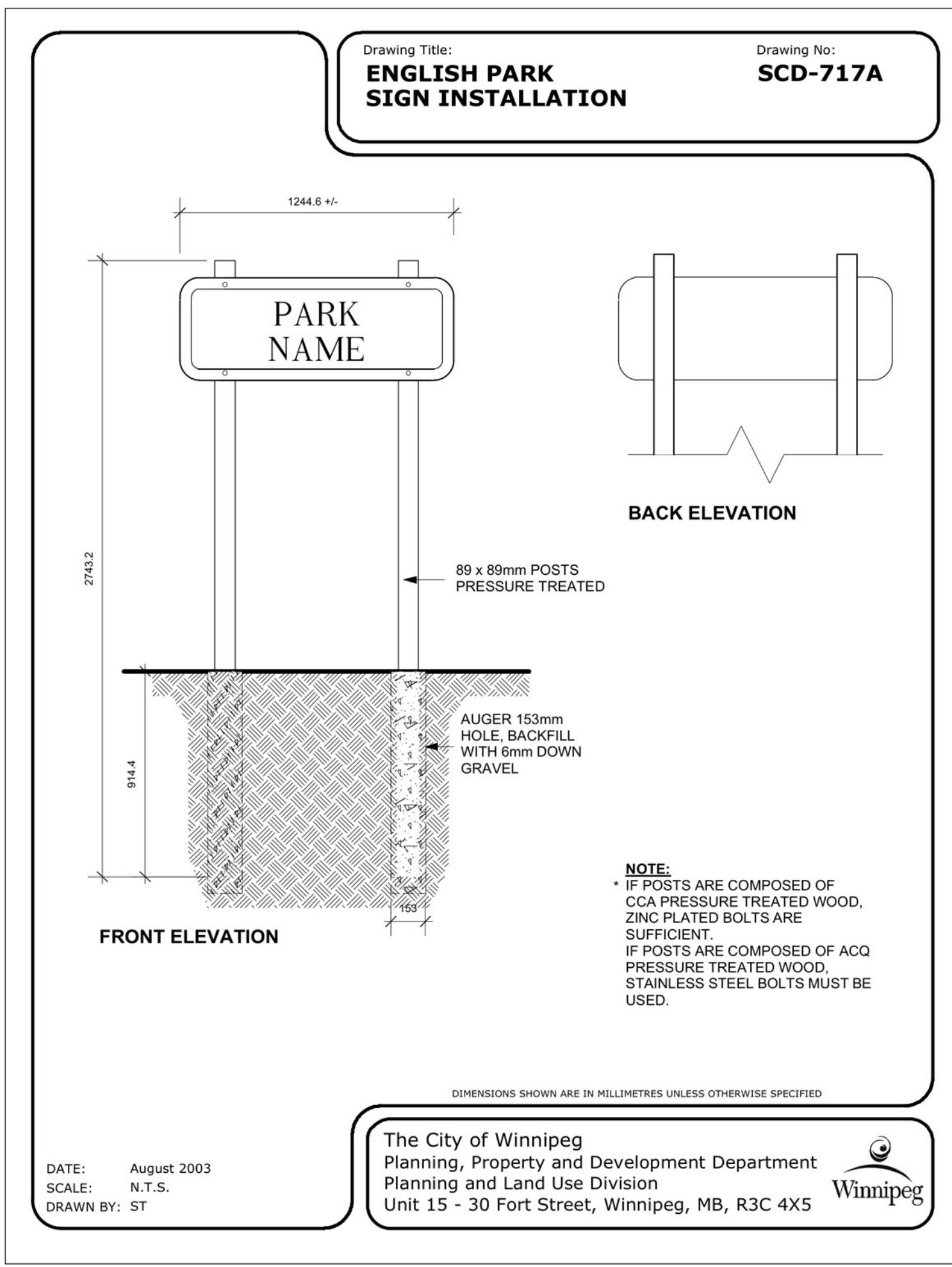
2 ACCESSIBLE ENTRANCE / EDGING DETAIL
L4 1:20



3 CONCRETE SANDBOX DETAIL
L4 1:20



4 MULTI-FLOW TRENCH
L4 1:25



ENGLISH PARK SIGN INSTALLATION
SCD-717A
DATE: August 2003
SCALE: N.T.S.
DRAWN BY: ST
The City of Winnipeg Planning, Property and Development Department
Unit 15 - 30 Fort Street, Winnipeg, MB, R3C 4X5

NOTE:
LOCATION OF UNDERGROUND STRUCTURES AS SHOWN ARE BASED ON THE BEST INFORMATION AVAILABLE BUT NO GUARANTEE IS GIVEN THAT ALL EXISTING UTILITIES ARE SHOWN OR THAT THE GIVEN LOCATIONS ARE EXACT. CONFIRMATION OF EXISTENCE AND EXACT LOCATION OF ALL SERVICES MUST BE OBTAINED FROM THE INDIVIDUAL UTILITIES BEFORE PROCEEDING WITH CONSTRUCTION.

LEGEND
NIC = Not In Contract

Manager Parks and Open Space Division
Released For Construction Date

DO NOT SCALE DRAWINGS		
Revisions	description	date
5		
4		
3		
2		
1		
0	Revision Note	DD-MM-YY

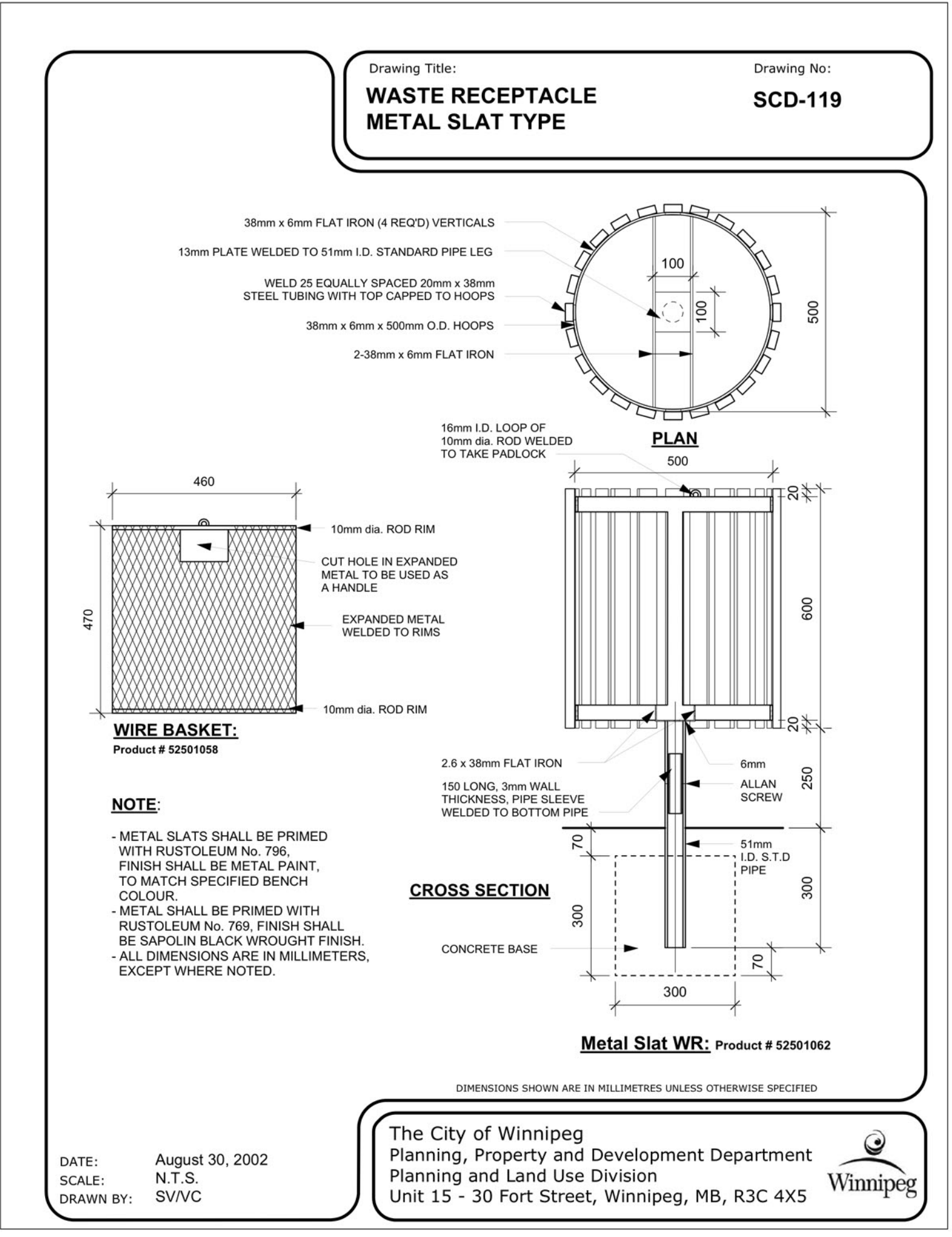
BCI II : MYNARSKI WARD TOT LOT REDEVELOPMENT WINNIPEG, MANITOBA

approved by: LLW scale: AS SHOWN
drawn by: LLW/CL date: 17 02 2011

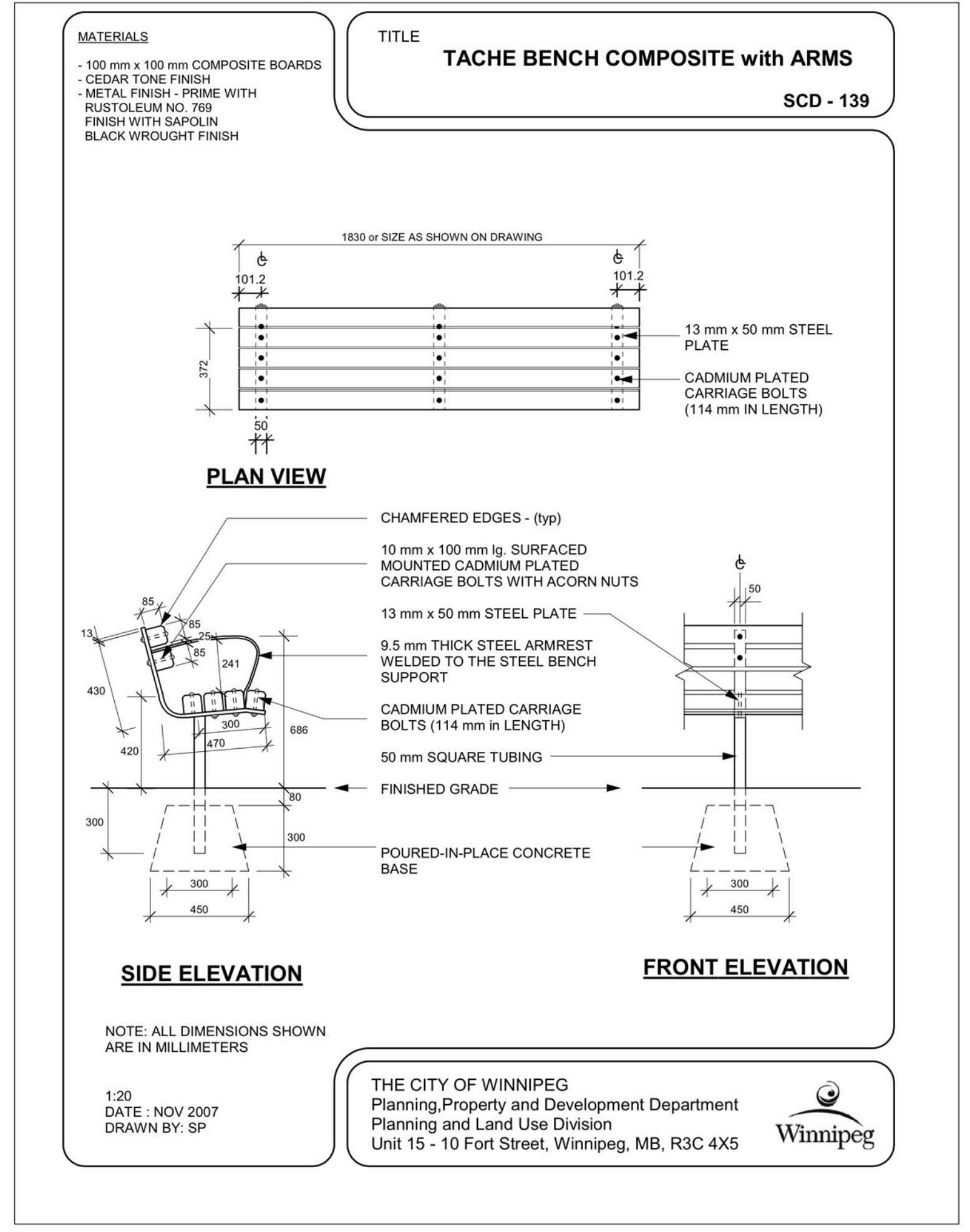


DETAILS

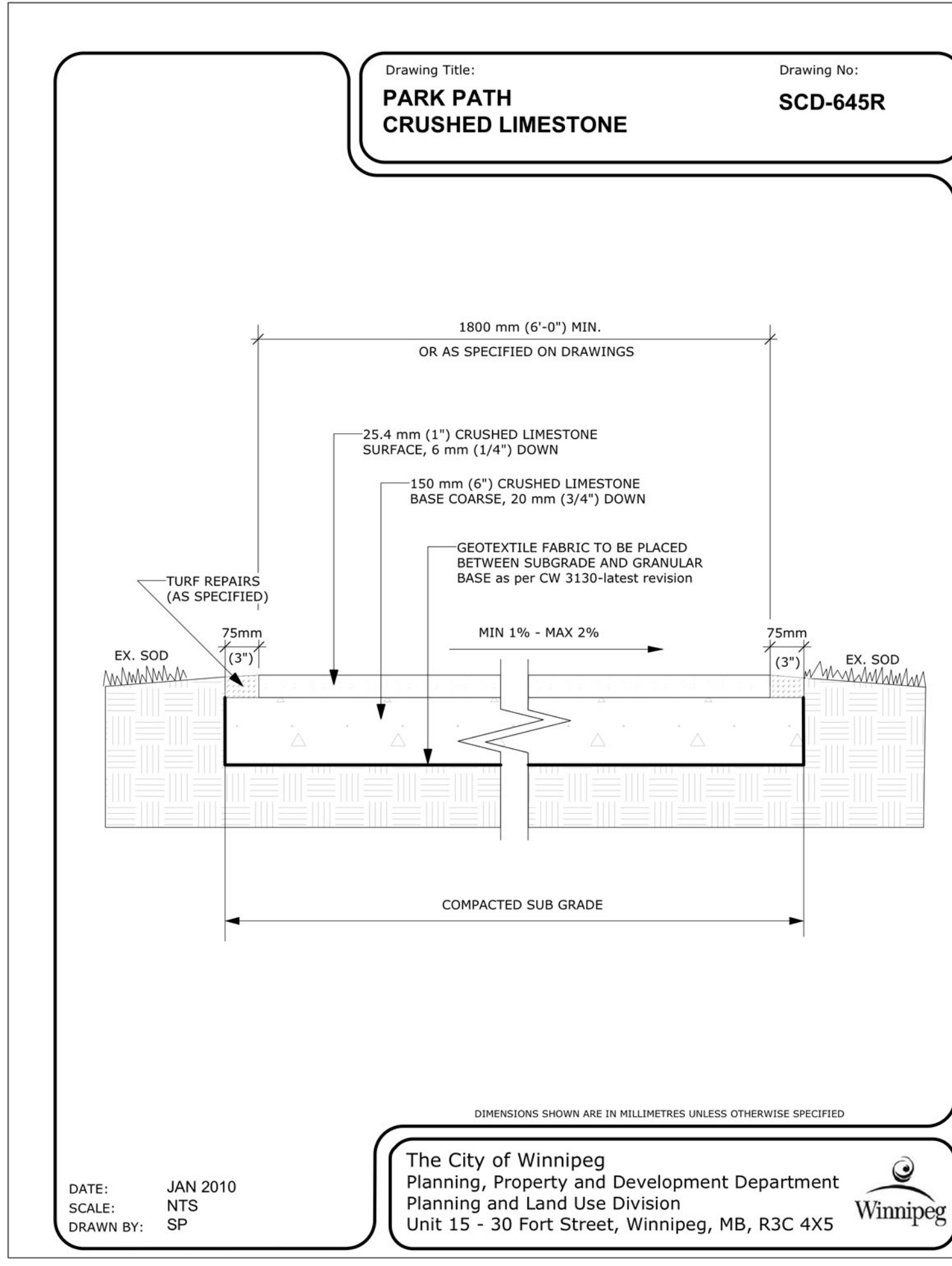
project no.	sheet	revision no.
1017_T	L4	0



WASTE RECEPTACLE METAL SLAT TYPE
SCD-119
DATE: August 30, 2002
SCALE: N.T.S.
DRAWN BY: SV/VC
The City of Winnipeg Planning, Property and Development Department
Unit 15 - 30 Fort Street, Winnipeg, MB, R3C 4X5



TACHE BENCH COMPOSITE with ARMS
SCD - 139
DATE: NOV 2007
DRAWN BY: SP
THE CITY OF WINNIPEG Planning, Property and Development Department
Unit 15 - 10 Fort Street, Winnipeg, MB, R3C 4X5



PARK PATH CRUSHED LIMESTONE
SCD-645R
DATE: JAN 2010
SCALE: NTS
DRAWN BY: SP
The City of Winnipeg Planning, Property and Development Department
Unit 15 - 30 Fort Street, Winnipeg, MB, R3C 4X5