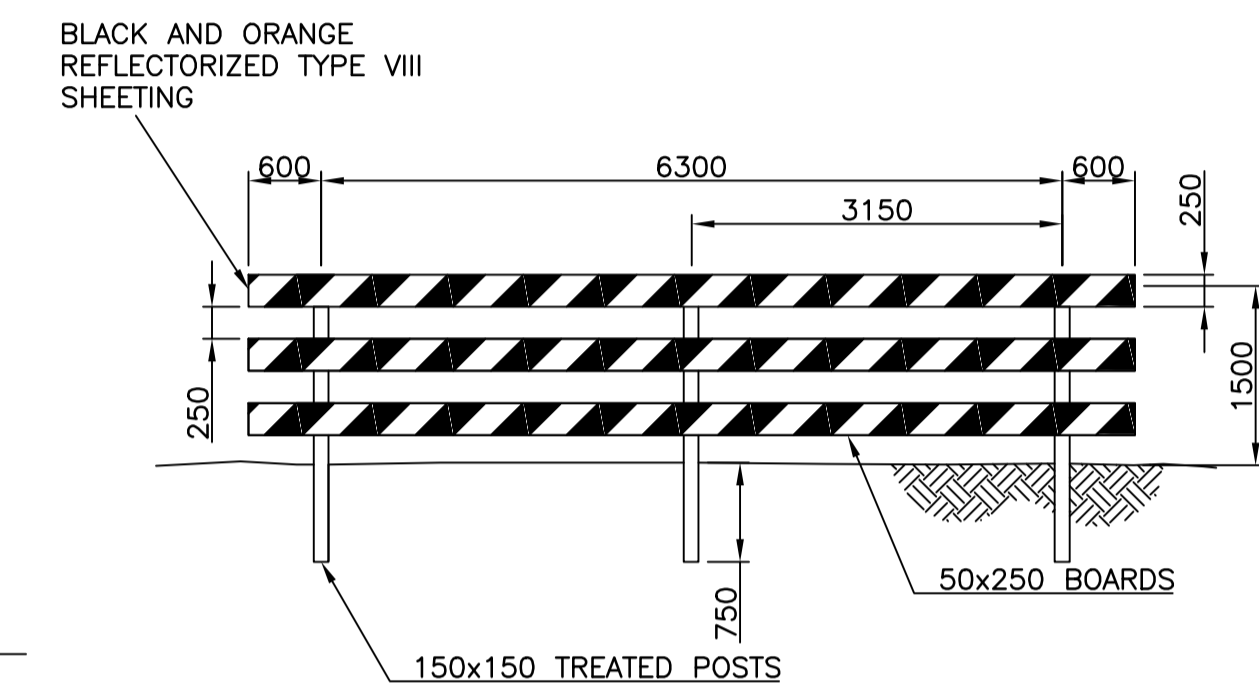


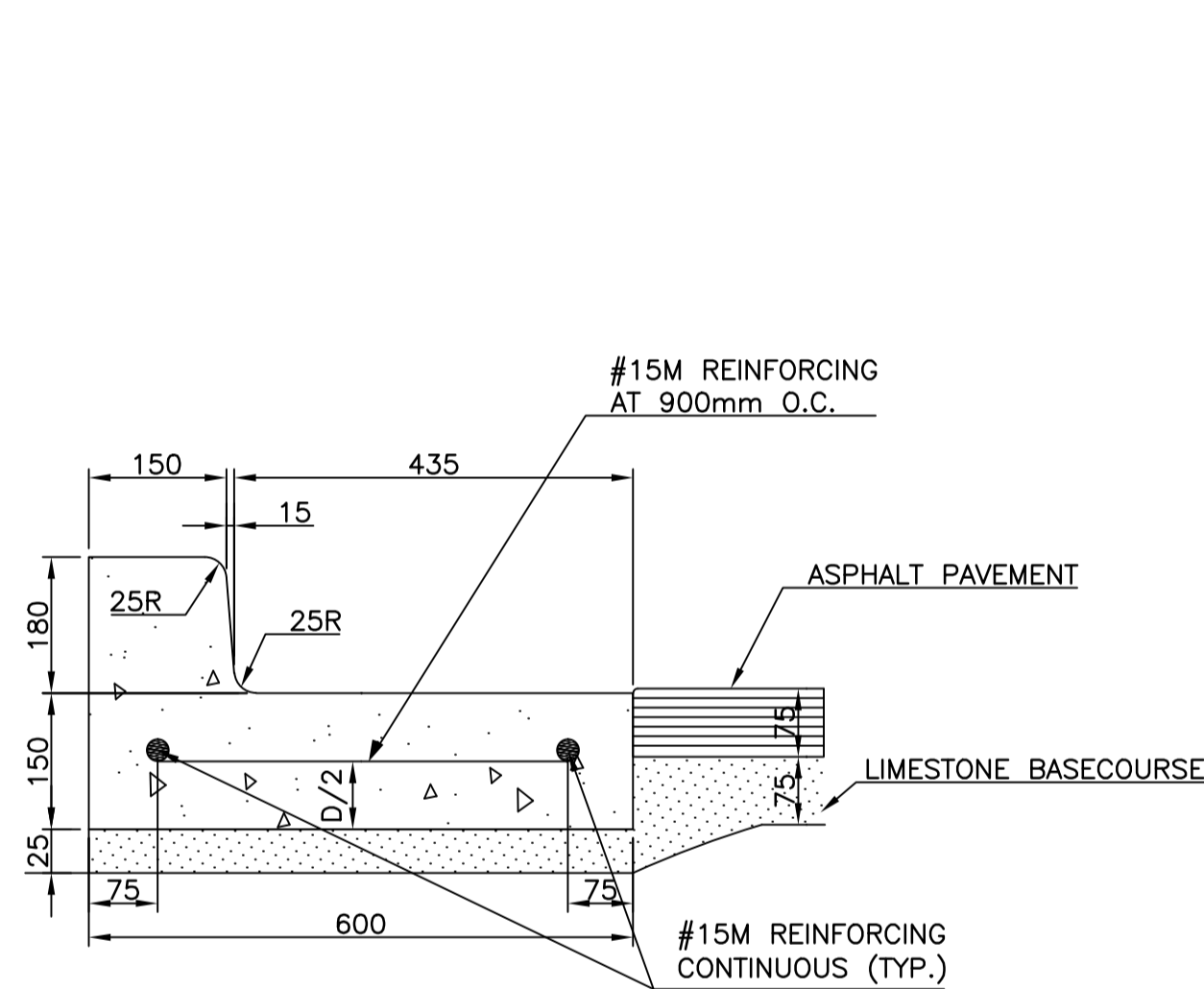
KEY MAP
N.T.S.



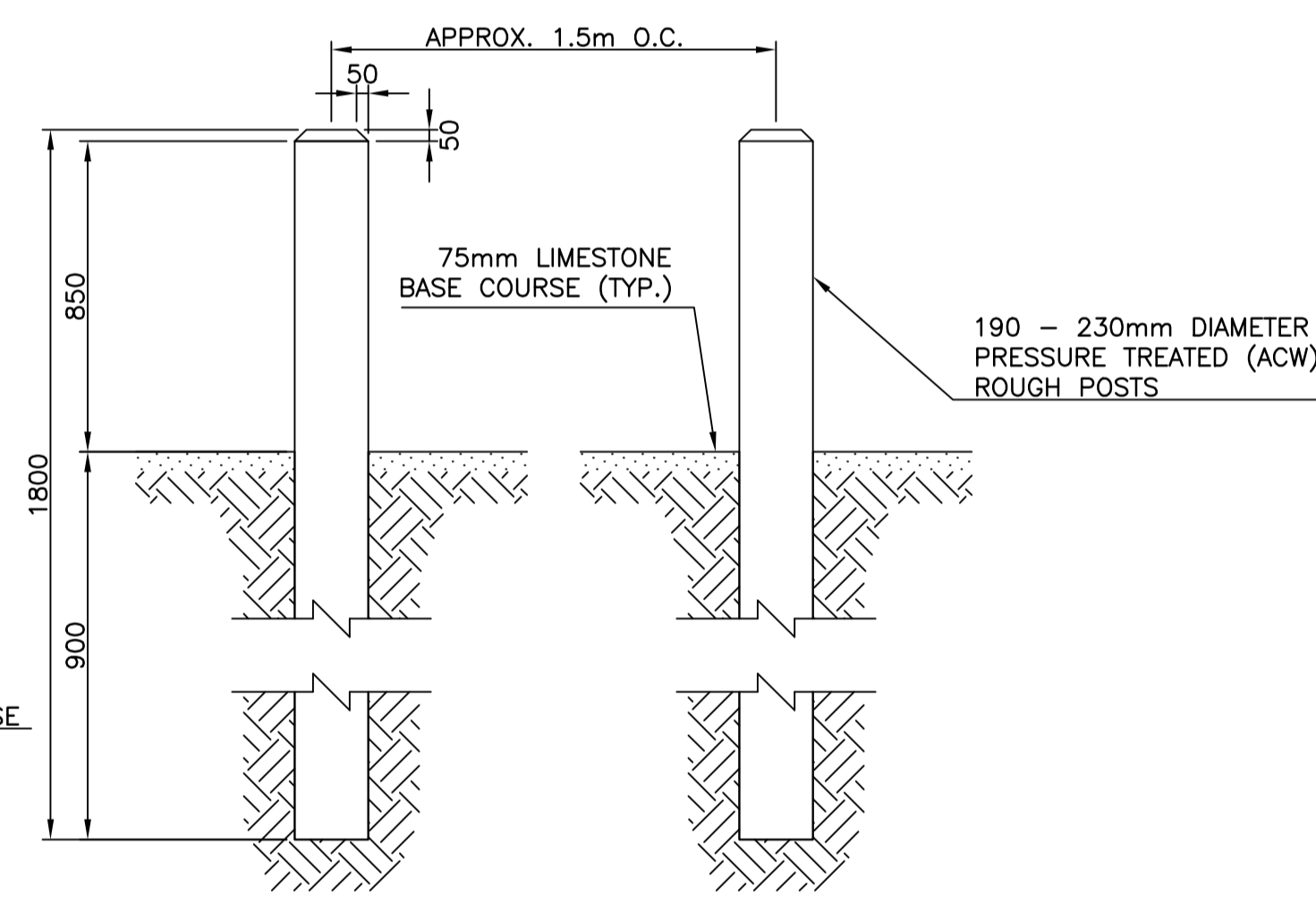
ROAD CLOSED SIGN
N.T.S.

CONSTRUCTION NOTES
 1. CONTRACTOR SHALL MAINTAIN FIRE LANE ACCESS TO RODES FOOTBALL CLUB HOUSE AND FIELDS AT ALL TIMES.
 2. SET ALL CULVERT INVERTS 25mm BELOW DITCH DESIGN ELEVATIONS.

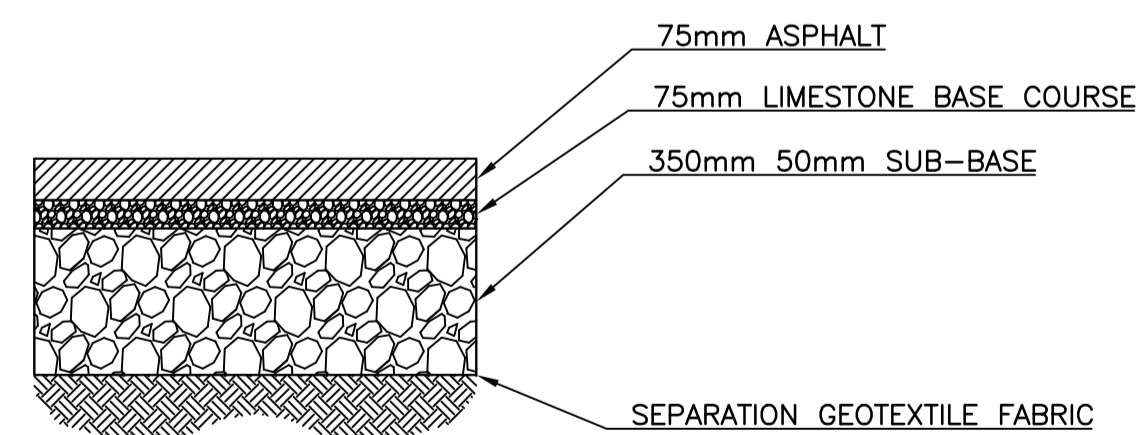
WARNING
 IF POWER EQUIPMENT OR EXPLOSIVES ARE TO BE USED FOR EXCAVATION ON THIS PROJECT THE CONTRACTOR MUST:
 1) OBTAIN CLEARANCE FROM THE GAS UTILITY
 2) TAKE PRECAUTION TO AVOID DAMAGE TO GAS UTILITY INSTALLATIONS.
 SEE PROVINCIAL REGULATION 210/72 FOR DETAILS



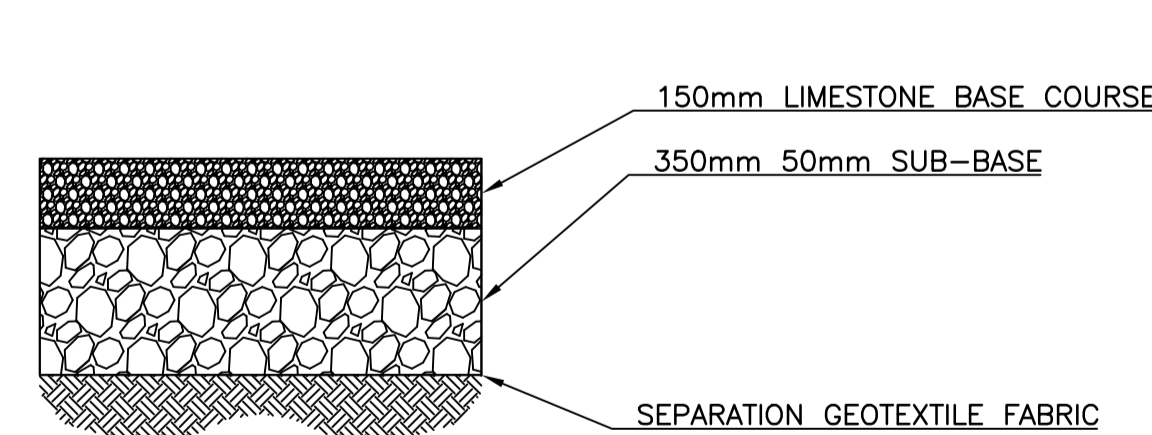
REINFORCED CURB AND GUTTER DETAIL
N.T.S.



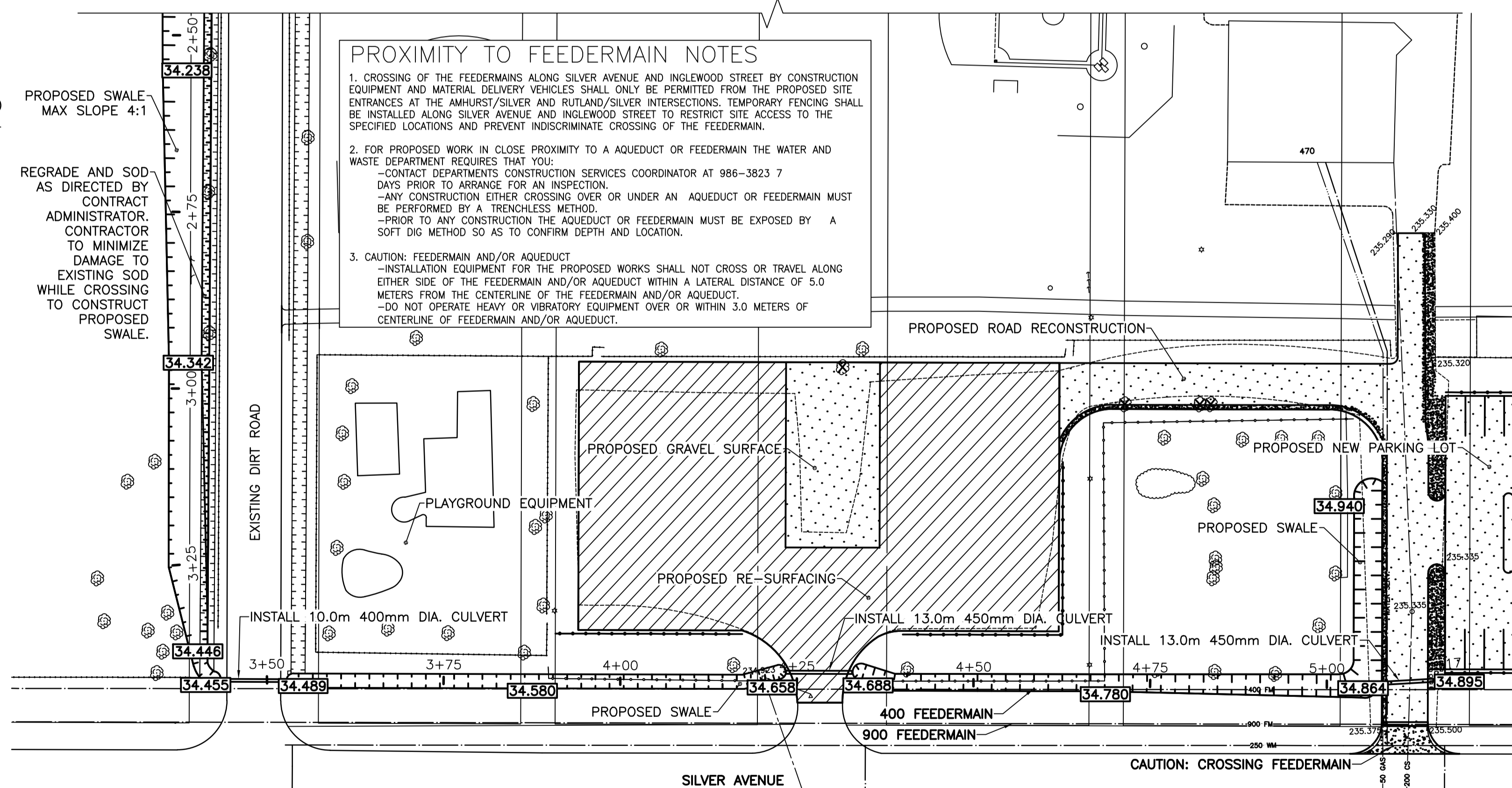
WOOD BOLLARD DETAILS (E9,E10)
N.T.S.



TYPICAL CROSS SECTION - ROAD
N.T.S.



TYPICAL CROSS SECTION - NEW PARKING LOT
N.T.S.



PROXIMITY TO FEEDERMAIN NOTES
 1. CROSSING OF THE FEEDERMAINS ALONG SILVER AVENUE AND INGLEDWOOD STREET BY CONSTRUCTION EQUIPMENT AND MATERIAL DELIVERY VEHICLES SHALL ONLY BE PERMITTED FROM THE PROPOSED SITE ENTRANCES AT THE AMHURST/SILVER AND RUTLAND/SILVER INTERSECTIONS. TEMPORARY FENCING SHALL BE INSTALLED ALONG SILVER AVENUE AND INGLEDWOOD STREET TO RESTRICT SITE ACCESS TO THE SPECIFIED LOCATIONS AND PREVENT INDISCRIMINATE CROSSING OF THE FEEDERMAIN.
 2. FOR PROPOSED WORK IN CLOSE PROXIMITY TO AN AQUEDUCT OR FEEDERMAIN THE WATER AND WASTE DEPARTMENT REQUIRES THAT YOU:
 - CONTACT DEPARTMENTS CONSTRUCTION SERVICES COORDINATOR AT 986-3823 7 DAYS PRIOR TO ARRANGE FOR AN INSPECTION.
 - ANY CONSTRUCTION EITHER CROSSING OVER OR UNDER AN AQUEDUCT OR FEEDERMAIN MUST BE PERFORMED BY A TRENCHLESS METHOD.
 - PRIOR TO ANY CONSTRUCTION THE AQUEDUCT OR FEEDERMAIN MUST BE EXPOSED BY A SOFT DIG METHOD SO AS TO CONFIRM DEPTH AND LOCATION.
 3. CAUTION: FEEDERMAIN AND/OR AQUEDUCT
 - INSTALLATION EQUIPMENT FOR THE PROPOSED WORKS SHALL NOT CROSS OR TRAVEL ALONG EITHER SIDE OF THE FEEDERMAIN AND/OR AQUEDUCT WITHIN A LATERAL DISTANCE OF 5.0 METERS FROM THE CENTERLINE OF THE FEEDERMAIN AND/OR AQUEDUCT.
 - DO NOT OPERATE HEAVY OR VIBRATORY EQUIPMENT OVER OR WITHIN 3.0 METERS OF CENTERLINE OF FEEDERMAIN AND/OR AQUEDUCT.

SEE NOTES ON SHEET 1

METRIC
 WHOLE NUMBERS INDICATE MILLIMETRES
 DECIMALIZED NUMBERS INDICATE METRES

BID OPPORTUNITY NO. 533-2011

⊕	HYDRANT	⊕	---	LDS/WWS	---			
⊙	VALVE	⊙	---	WATERMAIN	---			
▨	RE-GRADED SURFACE	▨	---	GAS	---			
▧	NEW GRAVEL SURFACE	▧	---	TRAFFIC SIGNALS	---			
○	ASPHALT	○	---	CONCRETE	---			
○	MANHOLE	○	---	CURB RENEWAL	---			
□	CATCH BASIN	□	231.000	ELEVATIONS	[231.000]			
△	CURB INLET	△	---	PROPERTY LINE	---			
☆	HYDRO POLE	☆	---	SURVEY BAR	---			
←	GUYWIRE	←	---	GEODETIC BENCH MARK	---			
⊗	EXIST. TREE/REMOVAL	⊗	---	RAMP CURB	---			
EXISTING	LEGEND - PLAN	PROPOSED	EXISTING	LEGEND - PLAN	PROPOSED	EXISTING	LEGEND - PROFILE	PROPOSED

LOCATION APPROVED UNDERGROUND STRUCTURES
 SUPR. U/G STRUCTURES COMMITTEE DATE
 NOTE:
 LOCATION OF UNDERGROUND STRUCTURES AS SHOWN ARE BASED ON THE BEST INFORMATION AVAILABLE. BUT NO GUARANTEE IS GIVEN THAT ALL EXISTING UTILITIES ARE SHOWN OR THAT THE GIVEN LOCATIONS ARE EXACT. CONFIRMATION OF EXISTENCE AND EXACT LOCATION OF ALL SERVICES MUST BE OBTAINED FROM THE INDIVIDUAL UTILITIES BEFORE PROCEEDING WITH CONSTRUCTION.

B.M. ELEV.	GBM 12-058 230.554
NO.	REVISIONS
DATE	BY

ENGINEERING DIVISION
 TECHNOLOGY SERVICES BRANCH
 106 - 1155 PACIFIC AVE
 DESIGNED BY R.M.
 CHECKED BY C.T.
 DRAWN BY R.M.
 APPROVED BY J.B.
 HOR. SCALE: 1 : 500
 VERTICAL: N.T.S.
 DATE 2011/08/18

ENGINEER'S SEAL
 R.T. CUNNINGHAM
 Member 24711
 ORIGINAL SIGNED BY R.T.C. AUGUST 24/2011

THE CITY OF WINNIPEG
 PUBLIC WORKS DEPARTMENT
 LEGION MEMORIAL PARK
 PARKING LOT EXPANSION AND ASSOCIATED WORKS
 CITY DRAWING NUMBER SE-11-31
 SHEET 3 OF 3
 3