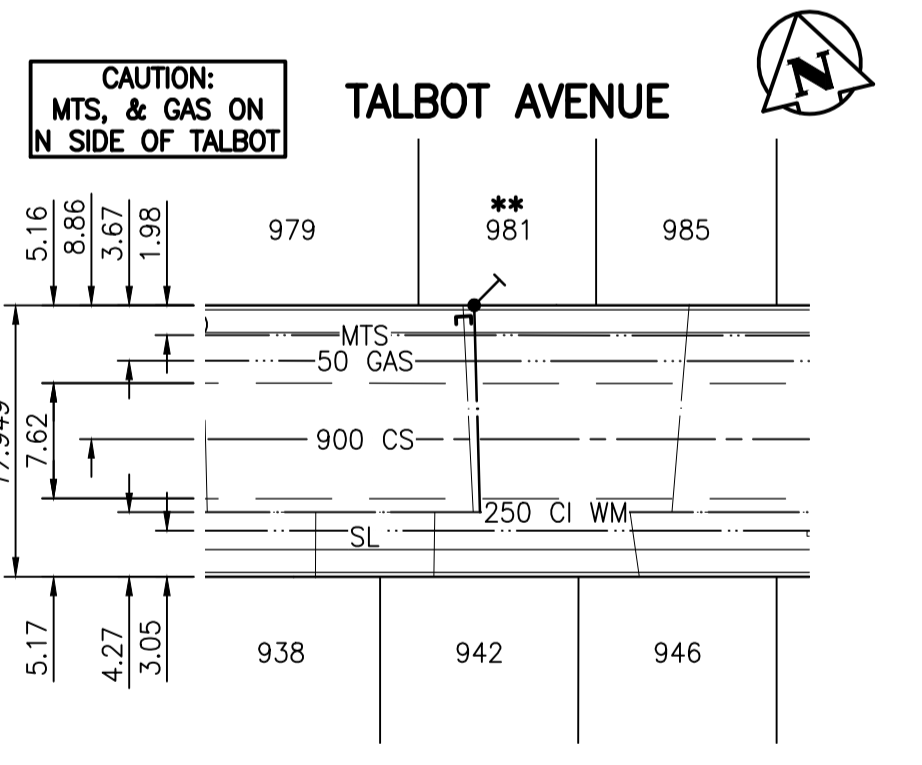
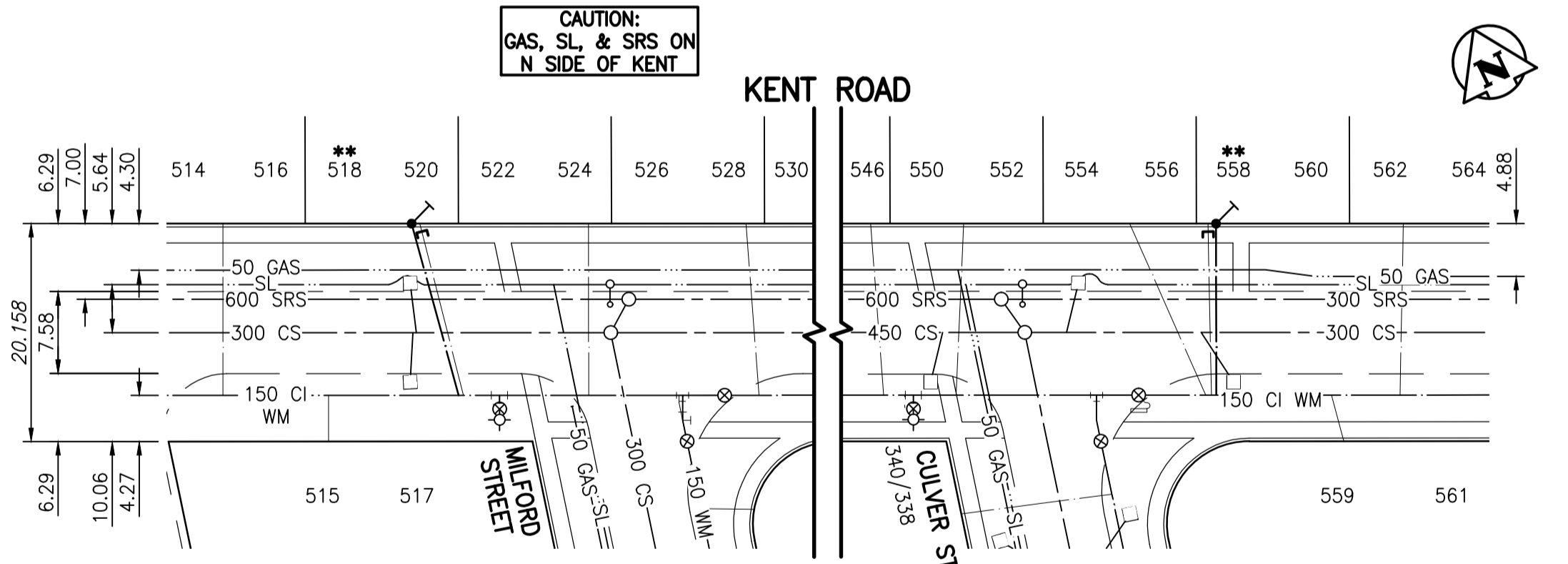
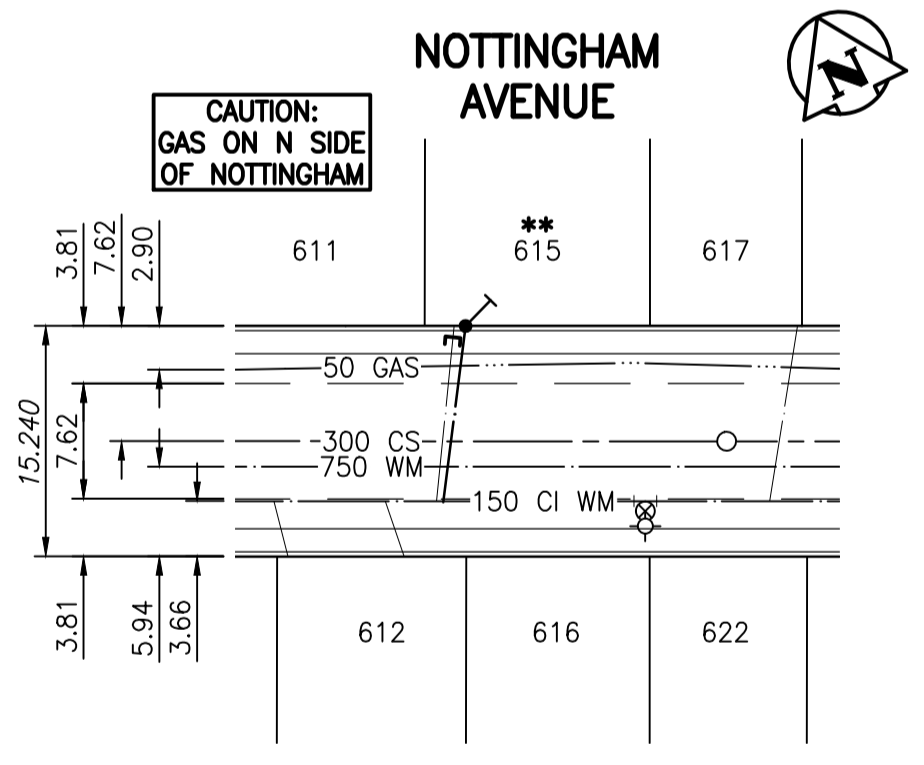
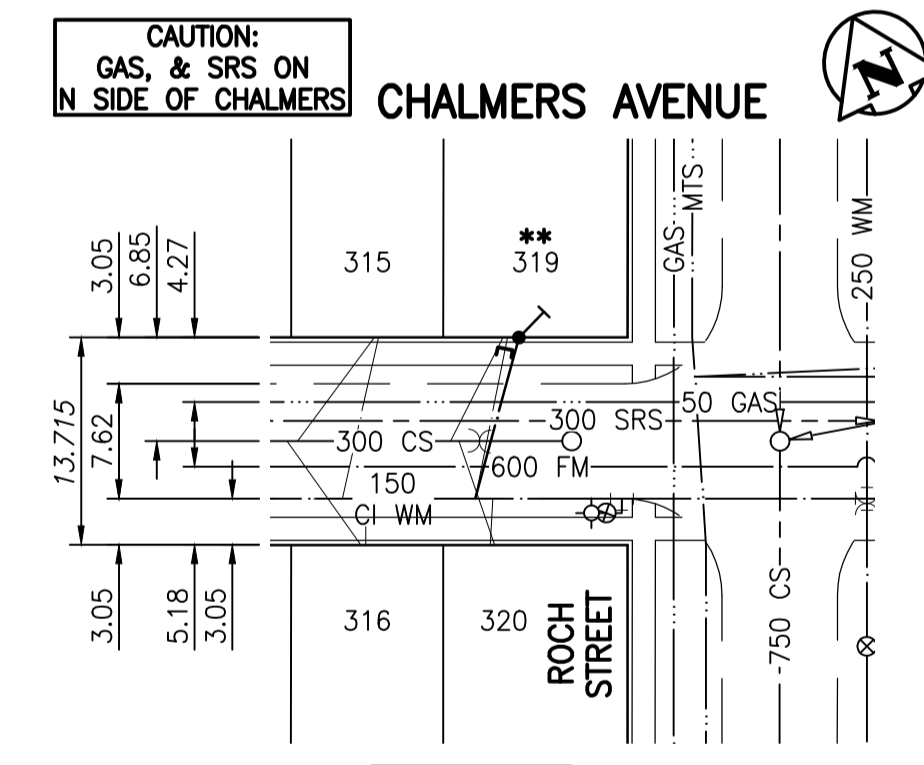
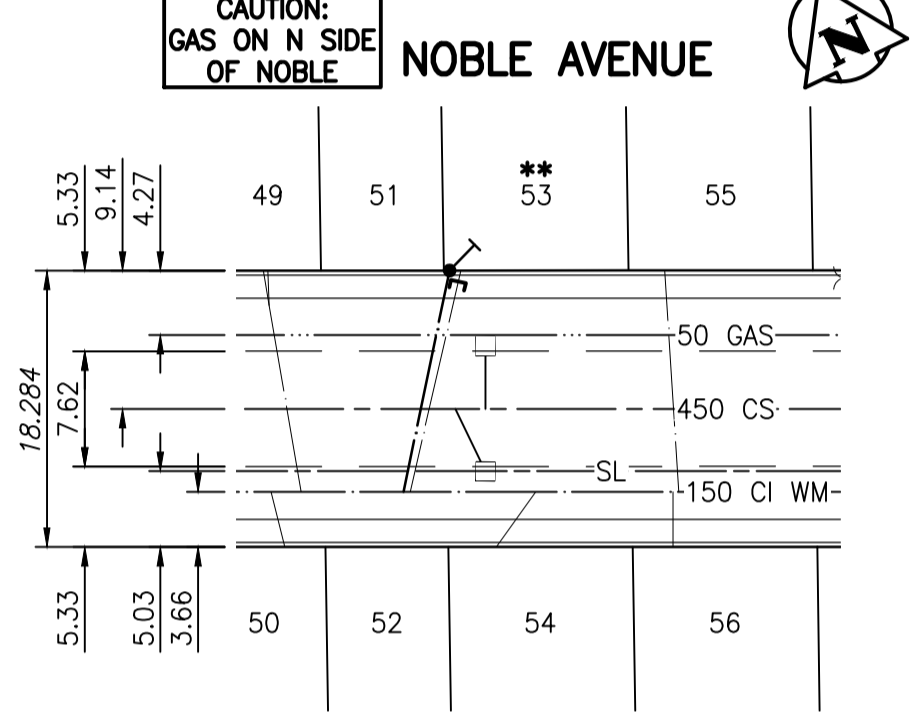
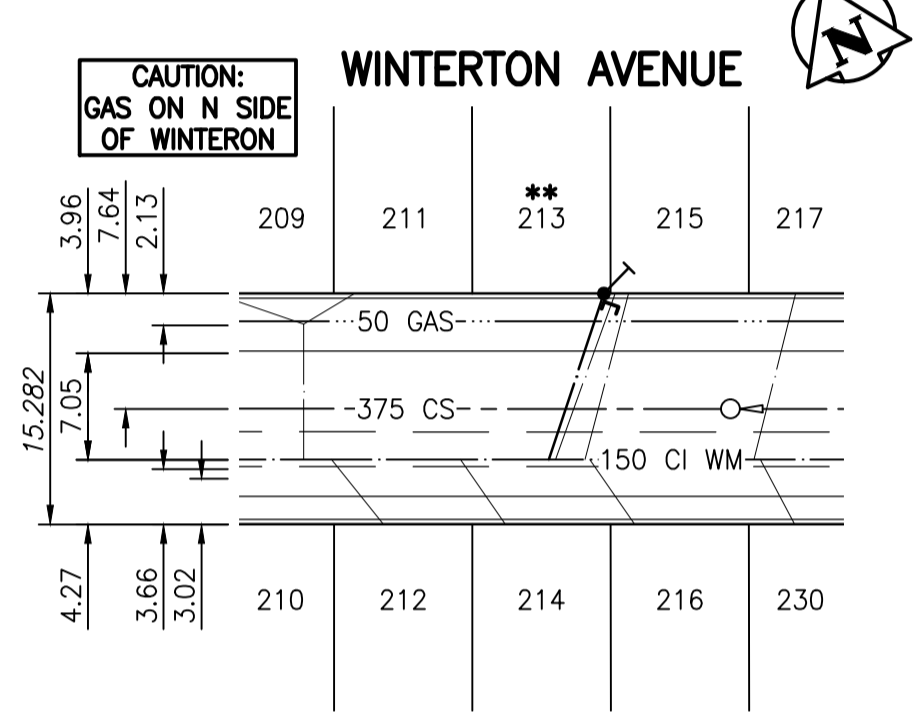
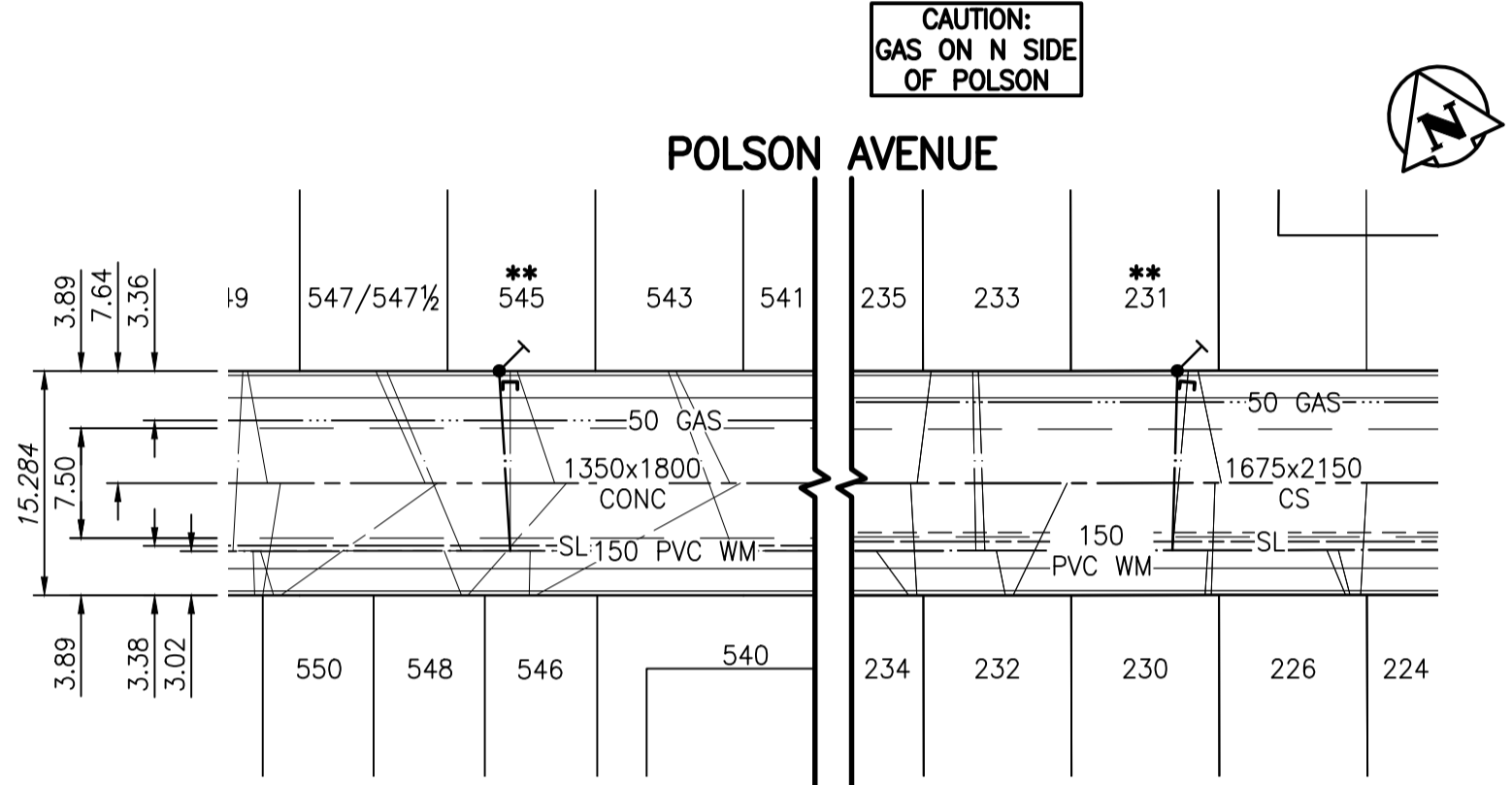
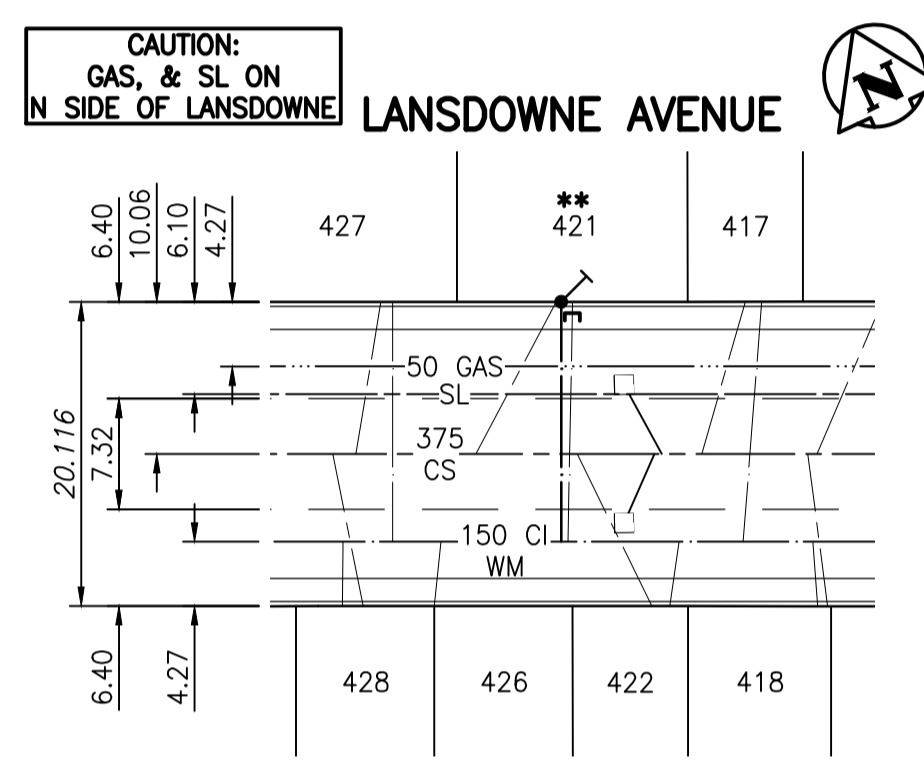


WATER SERVICE INFORMATION					
ADDRESS	SIZE & TYPE STREET	SIZE & TYPE PROPERTY	STOP COCK LOCATION SHORT & LONG	CORP LOCATION FROM STOP COCK	REMARKS
** 183 RUPERTSLAND BLVD. RESIDENTIAL	16 COPPER	16 COPPER	0.30 WEL HOUSE	0.60 E OF S/C	RENEW TO PL WITH 20 COPPER
** 173 SMITHFIELD AVE. RESIDENTIAL	19 COPPER	19 COPPER	4.42 EWL HOUSE	2.19 W OF HYDRANT	RENEW TO PL WITH 20 COPPER
** 187 SMITHFIELD AVE. RESIDENTIAL	19 COPPER	19 COPPER	3.84 EWL HOUSE	OPP S/C	RENEW TO PL WITH 20 COPPER
** 283 McADAM AVE. RESIDENTIAL	19 COPPER	19 COPPER	0.70 WEL HOUSE 32.00 WWL AKINS	0.30 W OF S/C	RENEW TO PL WITH 20 COPPER
** 301 McADAM AVE. RESIDENTIAL	19 COPPER	19 COPPER	0.21 WEL HOUSE 49.70 EEL SALTER	6.10 W OF S/C	RENEW TO PL WITH 20 COPPER
** 421 LANSDOWNE AVE. RESIDENTIAL	19 COPPER	19 COPPER	1.83 WEL HOUSE 45.72 WWL POWERS	0.30 W OF S/C	RENEW TO PL WITH 20 COPPER
** 231 POLSON AVE. RESIDENTIAL	19 COPPER	19 COPPER	1.22 WEL HOUSE	1.07 W OF S/C	RENEW TO PL WITH 20 COPPER
** 545 POLSON AVE. RESIDENTIAL	19 COPPER	19 COPPER	3.96 WEL HOUSE	OPP S/C	RENEW TO PL WITH 20 COPPER
** 213 WINTERTON AVE. RESIDENTIAL	12 COPPER	12 COPPER	0.30 EEL LOT	22.40 W OF HYDRANT	RENEW TO PL WITH 20 COPPER
** 53 NOBLE AVE. RESIDENTIAL	19 COPPER	19 COPPER	0.30 WWL HOUSE 35.35 WWL BEATRICE	3.66 WWL HOUSE	RENEW TO PL WITH 20 COPPER
** 319 CHALMERS AVE. RESIDENTIAL	12 LEAD	12 LEAD	2.32 EWL HOUSE 9.75 WWL ROCH	10.05 WWL ROCH	RENEW TO PL WITH 20 COPPER
** 615 NOTTINGHAM AVE. RESIDENTIAL	19 COPPER	19 COPPER		13.8 W OF HYDRANT	RENEW TO PL WITH 20 COPPER
** 518 KENT RD. RESIDENTIAL	19 COPPER	19 COPPER	0.76 EEL HOUSE 6.25 WWL WILFORD	3.23 EEL HOUSE	RENEW TO PL WITH 20 COPPER
** 558 KENT RD. RESIDENTIAL	19 COPPER	19 COPPER	1.98 WWL HOUSE 8.23 EEL CULVER	0.30 W OF S/C	RENEW TO PL WITH 20 COPPER
** 981 TALBOT AVE. RESIDENTIAL	19 COPPER	19 COPPER	2.19 EWL HOUSE 70.80 EEL KEENEYSIDE	0.60 E OF S/C	RENEW TO PL WITH 20 COPPER

\*\* - PREVIOUSLY FROZEN ON CITY SIDE



APPROXIMATE SEWER DEPTHS			
ADDRESS	DEPTH TO INVERT (m)*	ADDRESS	DEPTH TO INVERT (m)*
183 RUPERTSLAND BLVD.	CS 3.2	213 WINTERTON AVE.	300 CS UNKNOWN
173 SMITHFIELD AVE.	300 CS 4.5	53 NOBLE AVE.	450 CS 4.0
187 SMITHFIELD AVE.	300 CS 4.0	319 CHALMERS AVE.	300 SRS 4.9 / 300 CS 3.1
283 McADAM AVE.	375 CS 4.8	615 NOTTINGHAM AVE.	300 CS 3.6
301 McADAM AVE.	375 CS 4.8	518 KENT RD.	600 SRS 4.6 / 300 CS 2.9
421 LANSDOWNE AVE.	CS 4.25	558 KENT RD.	300 SRS 2.9 / 300 CS 3.1
231 POLSON AVE.	1675x2150 CS 8.2	981 TALBOT AVE.	900 CS 5.7
545 POLSON AVE.	1675x2150 CS 7.2		

\* CONTRACTOR TO VERIFY IN THE FIELD

**WARNING**

IF POWER EQUIPMENT OR EXPLOSIVES ARE TO BE USED FOR EXCAVATION ON THIS PROJECT THE CONTRACTOR MUST:  
 1) NOTIFY THE GAS COMPANY OF THE PROPOSED LOCATION OF EXCAVATION.  
 2) TAKE PRECAUTION TO AVOID DAMAGE TO GAS COMPANY INSTALLATIONS.  
 SEE PROVINCIAL REGULATION 140/92 FOR DETAILS

- CONSTRUCTION NOTES:**
1. CONFIRM LOCATION OF ALL SERVICES IN THE FIELD.
  2. CONNECT ALL SERVICES AT EXISTING CORP. LOCATIONS UNLESS OTHERWISE NOTED OR AS DIRECTED BY THE CONTRACT ADMINISTRATOR

**APEGM**  
 Certificate of Authorization  
 Stantec Consulting Ltd.  
 No. 1301 Date: \_\_\_\_\_

**METRIC**  
 WHOLE NUMBERS INDICATE MILLIMETRES  
 DECIMALIZED NUMBERS INDICATE METRES

BID OPPORTUNITY 534-2011

150 WM	WATERMAIN	150 WM	HYDRO	150 WM	WATERMAIN	150 WM
⊕	HYDRANT	⊕	M.T.S.	⊕	HYDRANT, VALVE	⊕
⊗	VALVE	⊗	CONCRETE	⊗	LAND DRAINAGE SEWER	⊗
⊖	LAND DRAINAGE SEWER	⊖	ASPHALT	⊖	WASTE WATER SEWER	⊖
⊙	WASTE WATER SEWER	⊙	SIDEWALK	⊙	⊙ PROFILE	⊙
○	MANHOLE	○	PROPERTY LINE	□	NORTH OR WEST GUTTER	□
□	CATCH BASIN	□	SURVEY BAR	⊕	SOUTH OR EAST GUTTER	⊕
▽	CURB INLET	▽	DITCH	◇	NORTH OR WEST IP	◇
⊕	JUNCTIONS	⊕	CURB STOP	⊕	SOUTH OR EAST IP	⊕
⊕	CULVERT	⊕		△	NORTH OR WEST DITCH	△
⊕	GAS	⊕		▽	SOUTH OR EAST DITCH	▽
---	EXISTING	---	LEGEND-PLAN	---	LEGEND-PROFILE	---
---	PROPOSED	---	PROPOSED	---	PROPOSED	---

**LOCATION APPROVED UNDERGROUND STRUCTURES**

SUPV. U/G STRUCTURES COMMITTEE DATE \_\_\_\_\_

NOTE:  
 LOCATION OF UNDERGROUND STRUCTURES AS SHOWN ARE BASED ON THE BEST INFORMATION AVAILABLE BUT NO GUARANTEE IS GIVEN THAT ALL EXISTING UTILITIES ARE SHOWN OR THAT THE GIVEN LOCATIONS ARE EXACT. CONFIRMATION OF EXISTENCE AND EXACT LOCATION OF ALL SERVICES MUST BE OBTAINED FROM THE INDIVIDUAL UTILITIES BEFORE PROCEEDING WITH CONSTRUCTION.

NO.	REVISIONS	DATE	BY

**Stantec Consulting Ltd.**  
 905 Waverley Street, Winnipeg, Manitoba  
 Tel 204-489-5900 Fax 204-453-9012

DESIGNED BY: R.M.S.	CHECKED BY: H.A.K.
DRAWN BY: A.D.L.	APPROVED BY: H.A.K.
HOR. SCALE: 1:500	RELEASED FOR CONSTRUCTION: _____
VERTICAL: N/A	DATE: _____

ENGINEER'S SEAL

CONSULTANT DRAWING NO. C-202

**THE CITY OF WINNIPEG**  
 WATER AND WASTE DEPARTMENT  
 ENGINEERING DIVISION

**2011 WATER SERVICE REPLACEMENT PROGRAM**  
 CONTRACT No. 12  
 AREA 1 - SECTION B &  
 AREA 2 - SECTION B

SHEET 3 OF 5  
 CAD FILE DRAWING NUMBER 13030c-202-751.DWG  
 CITY DRAWING NUMBER D-12481