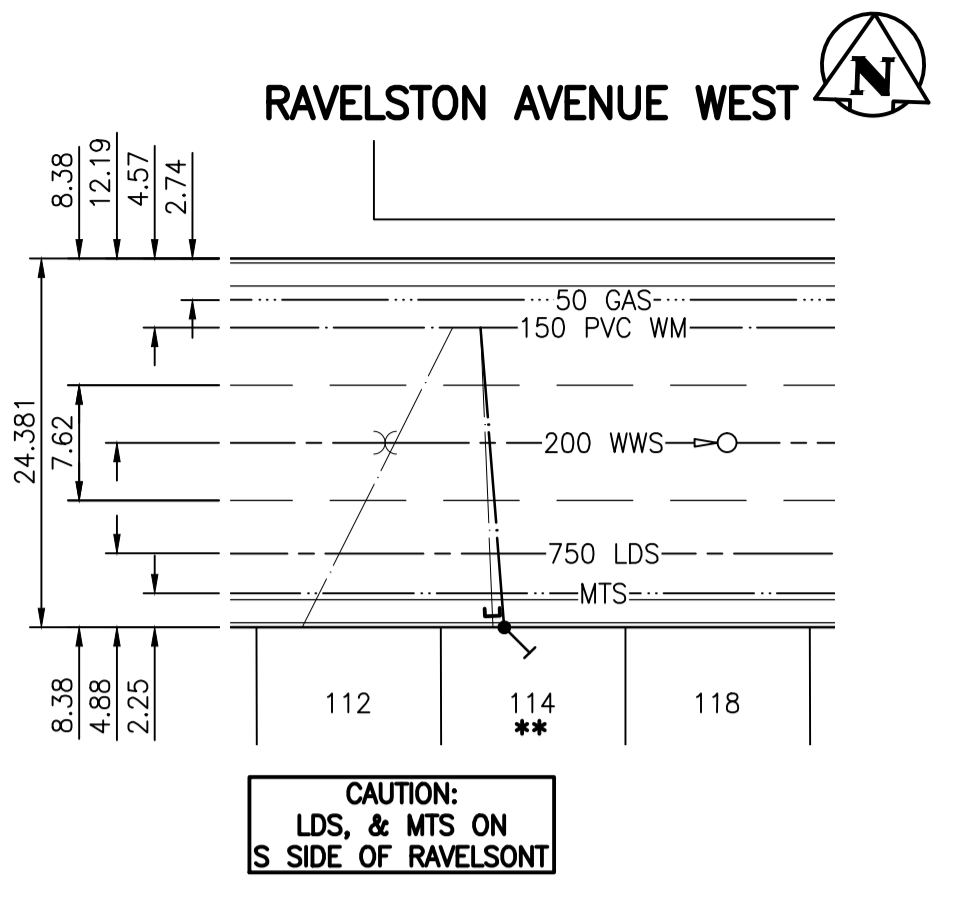
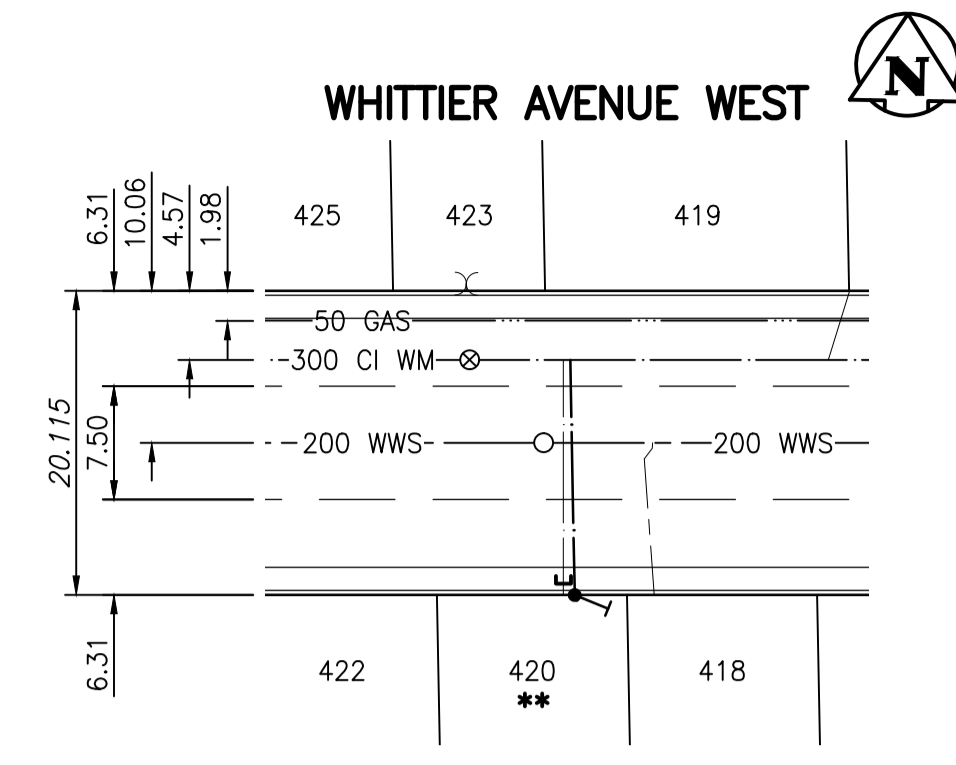
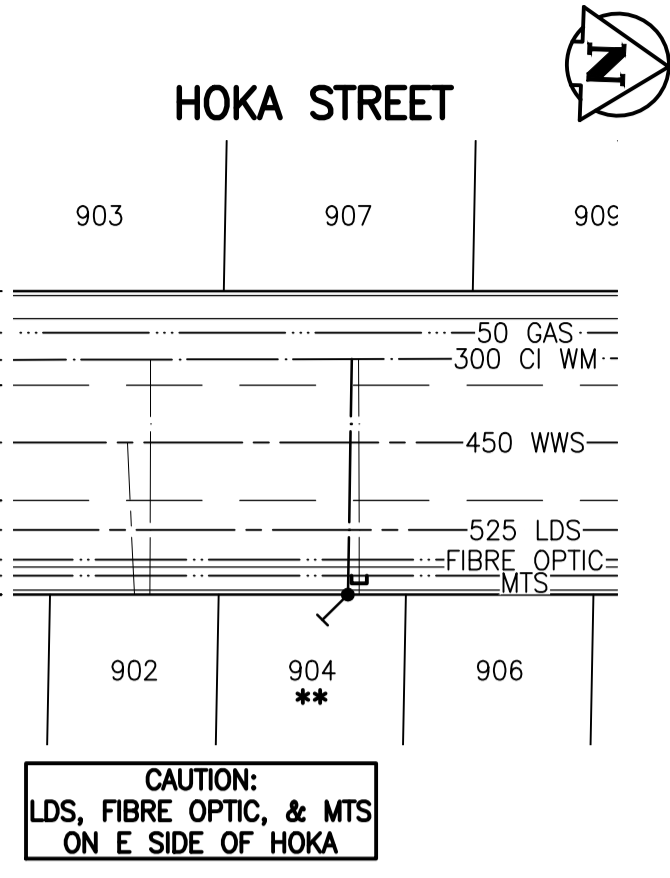
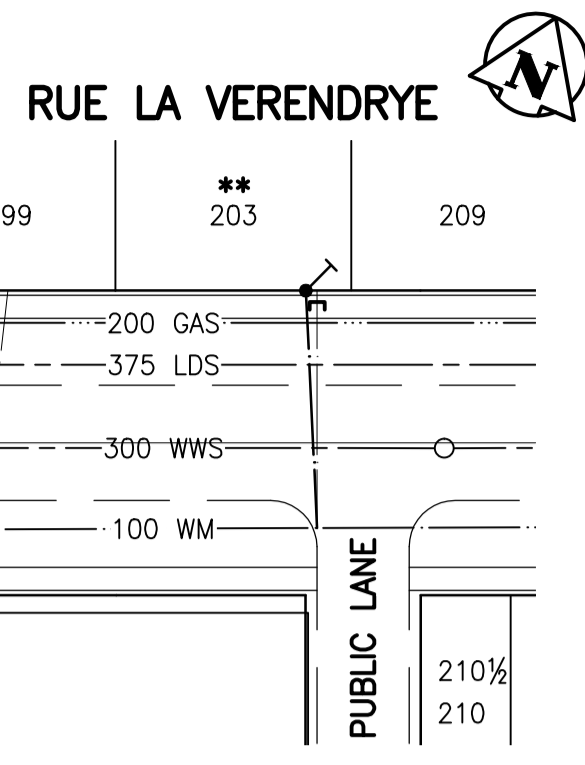
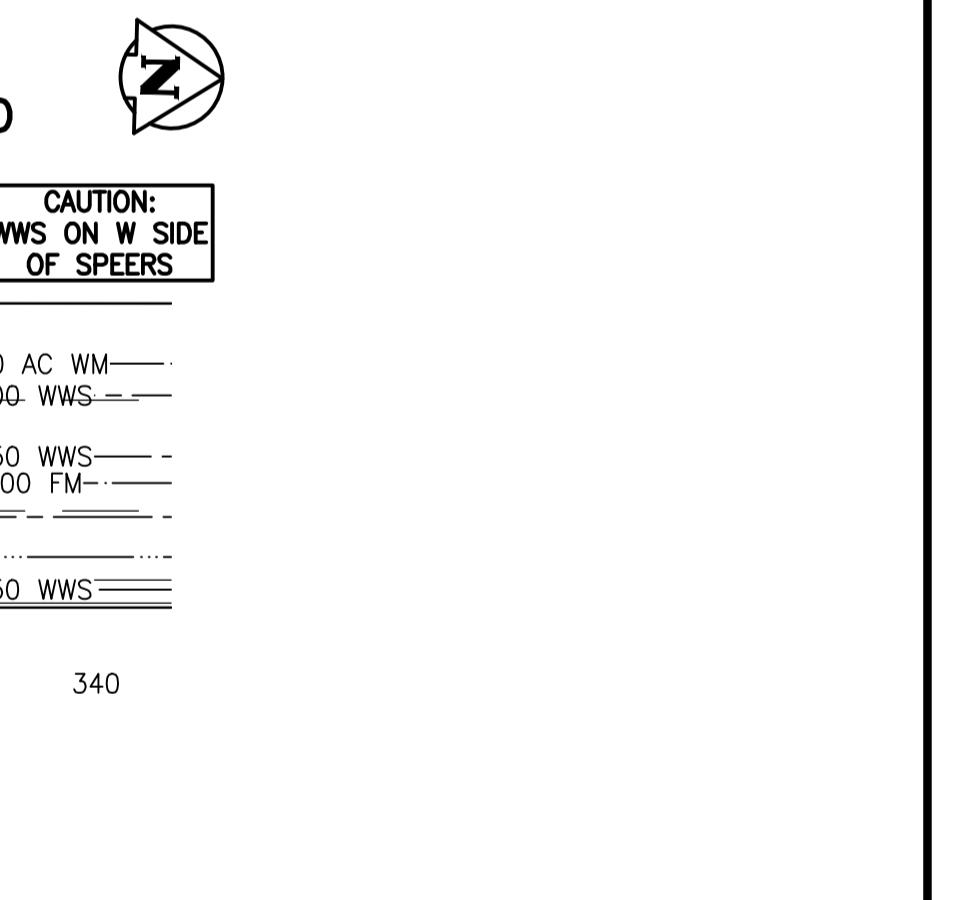
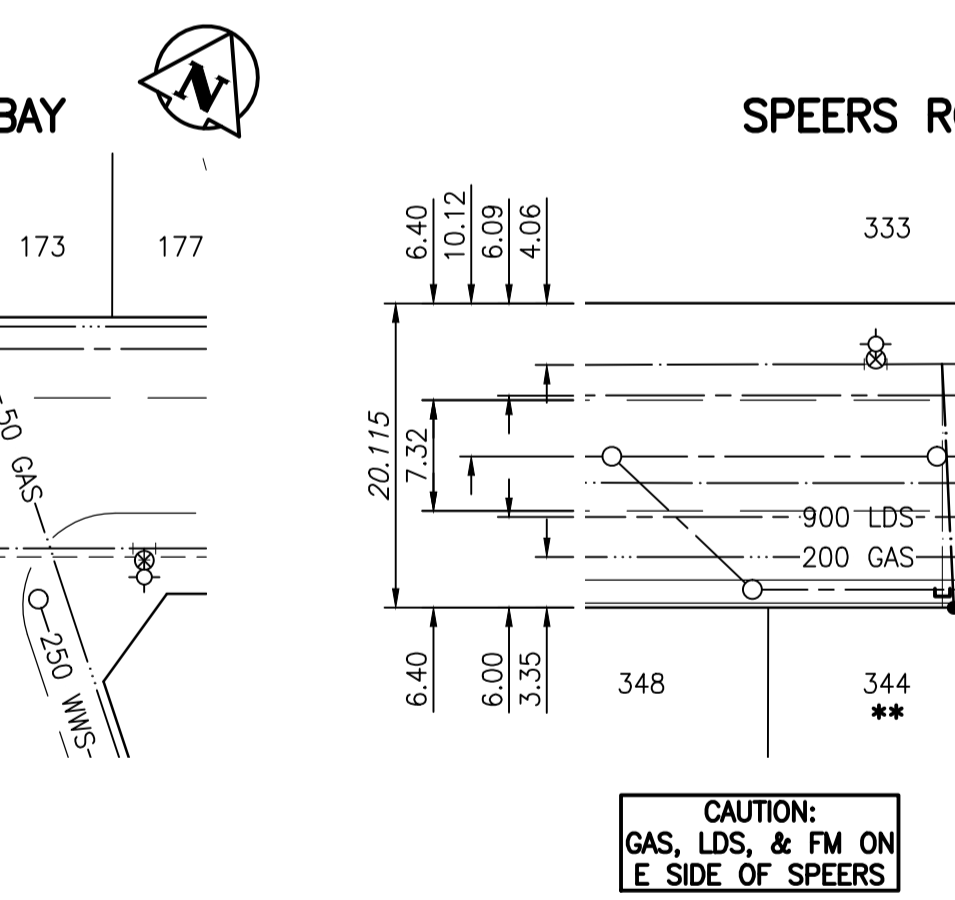
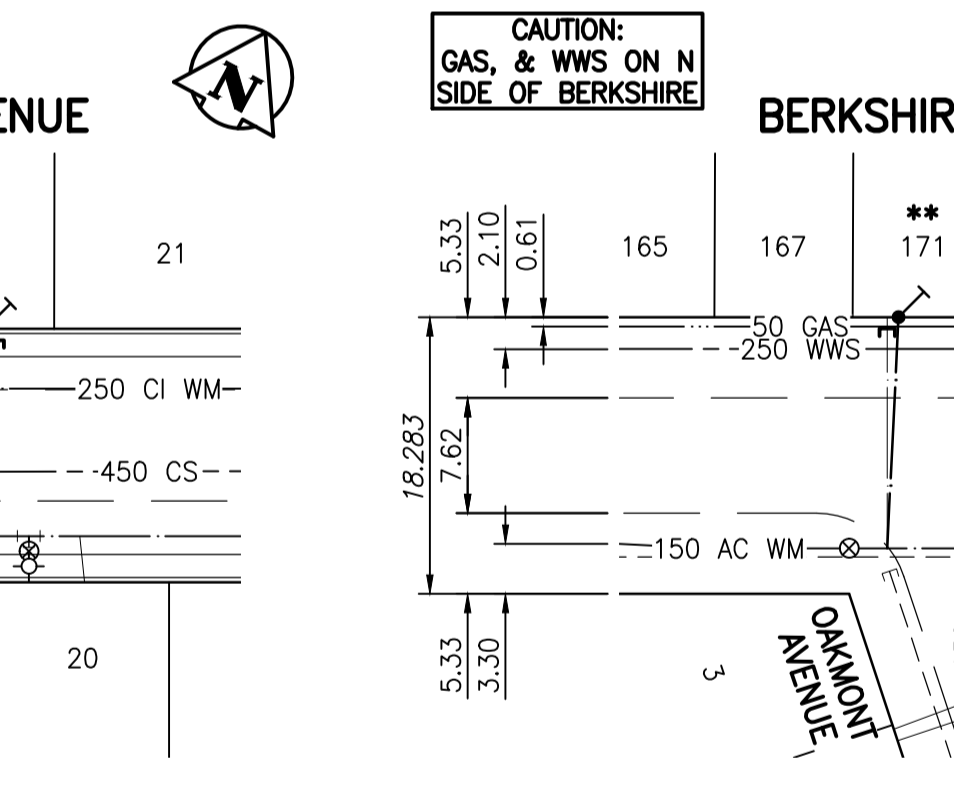
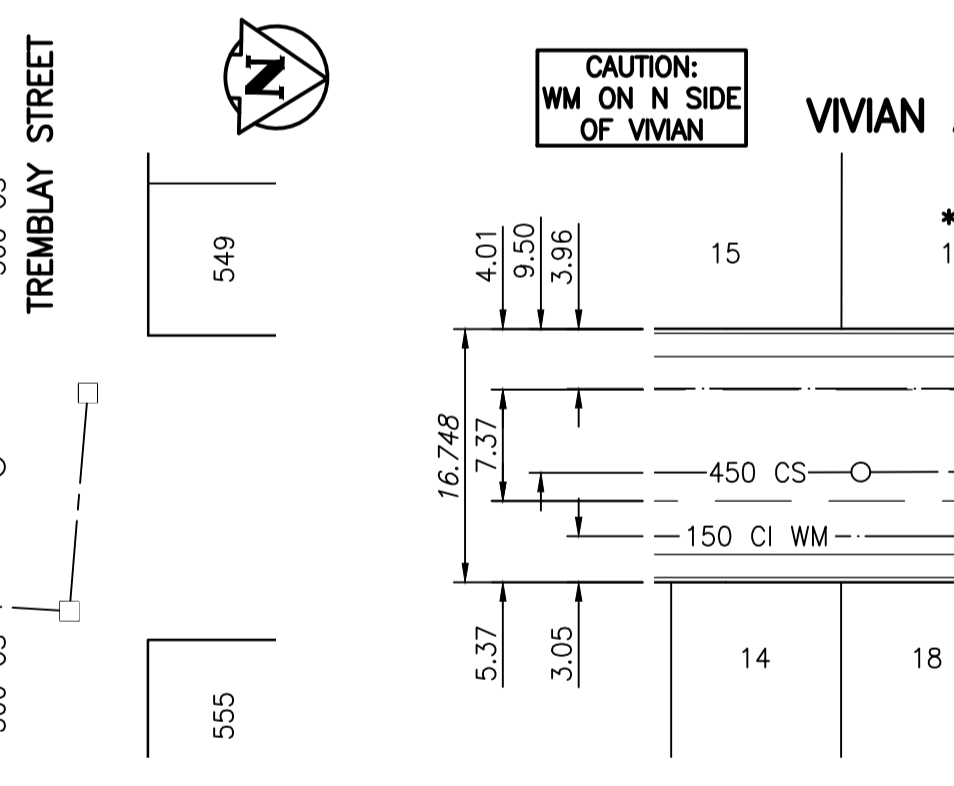
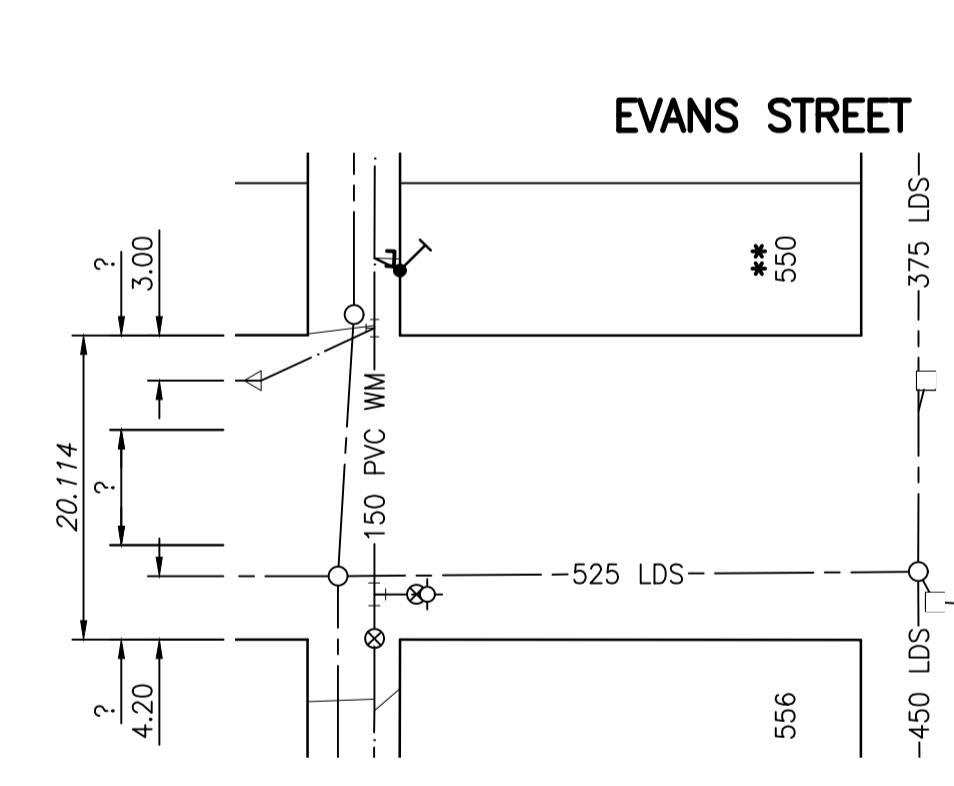
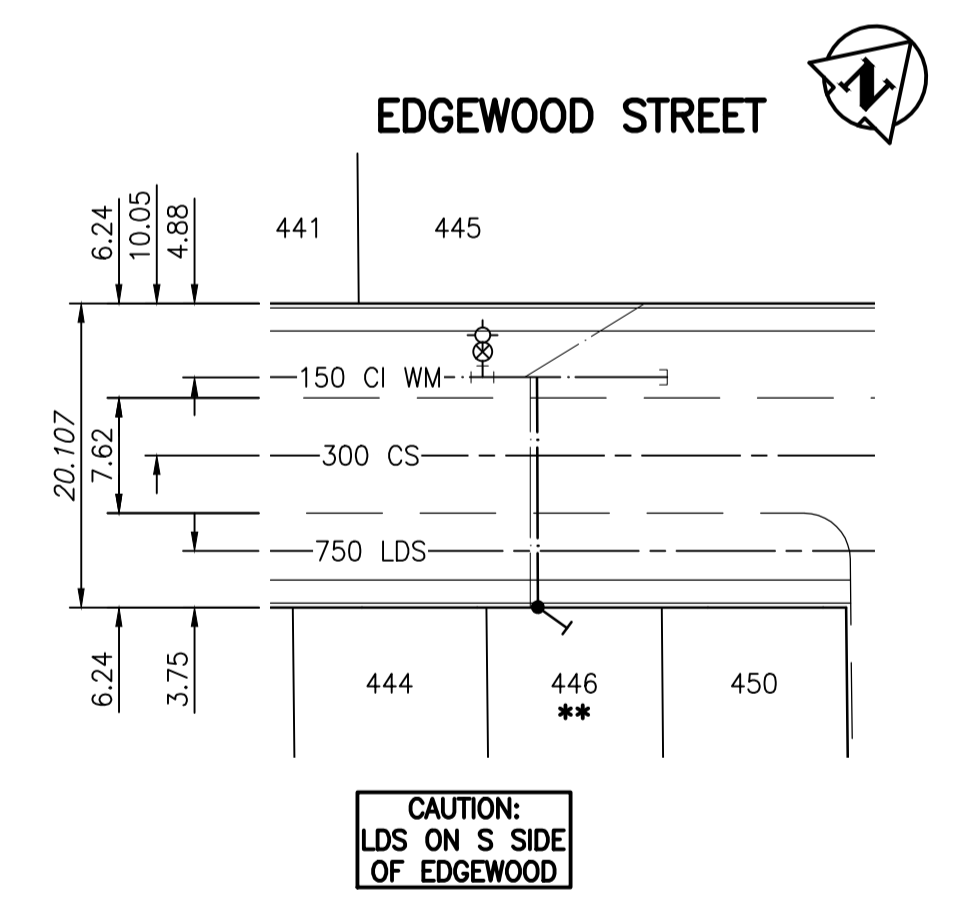
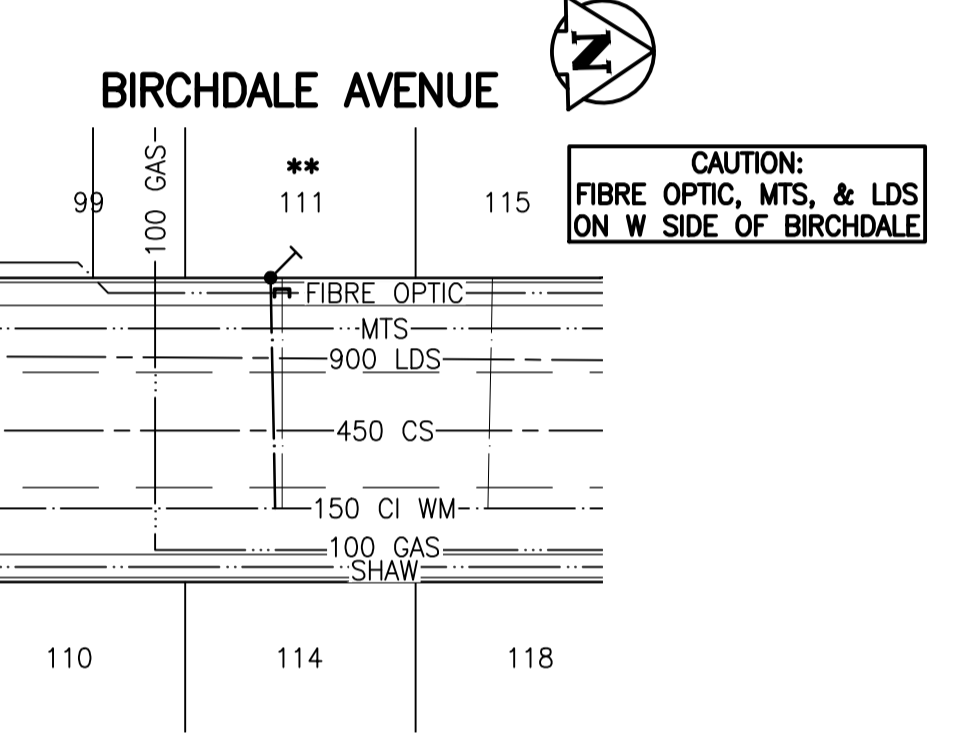
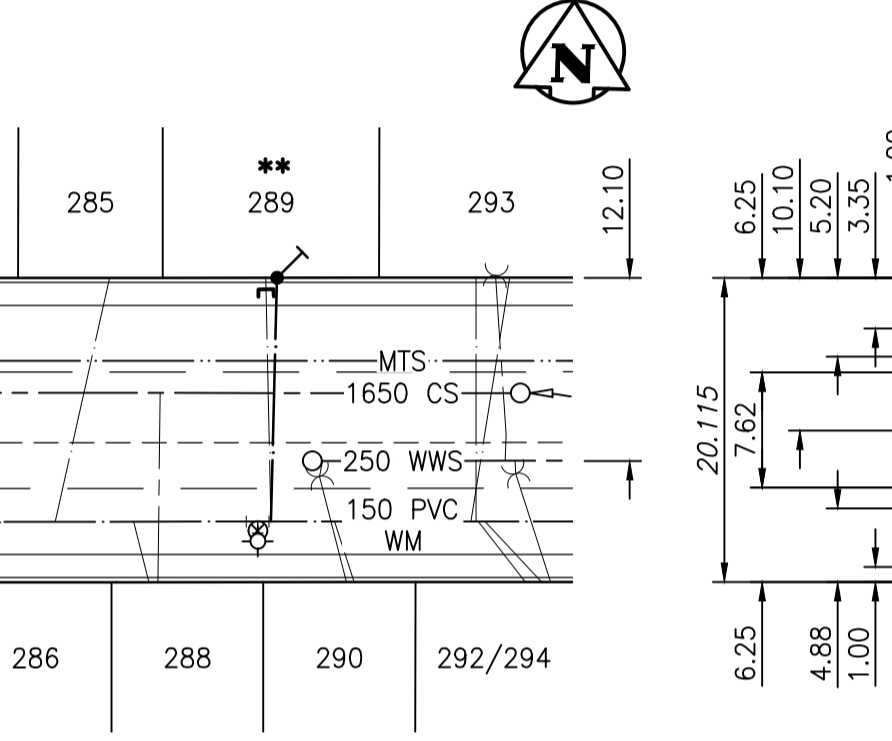
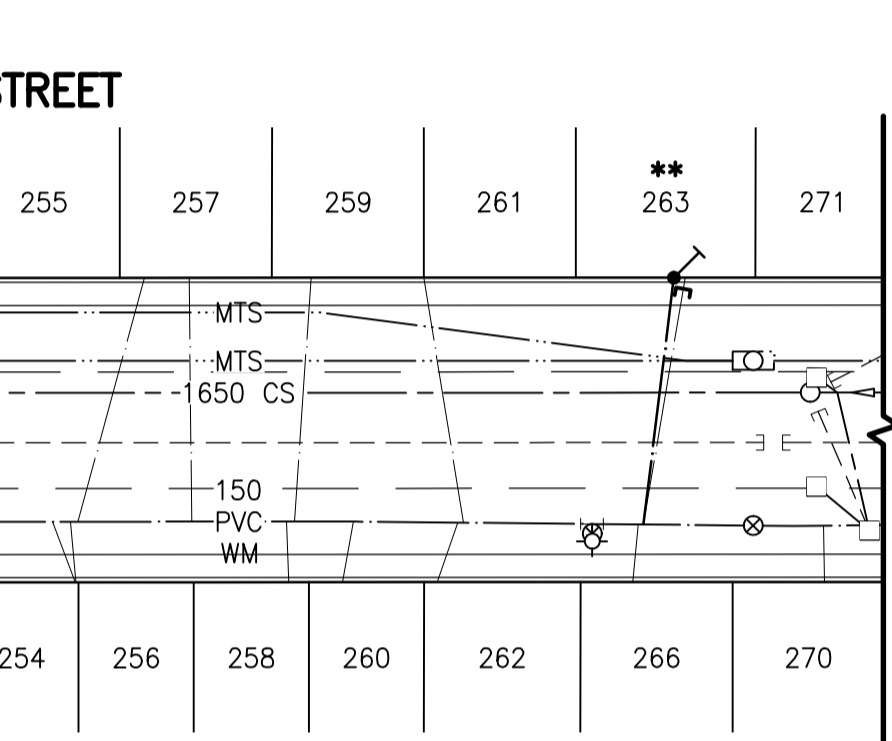
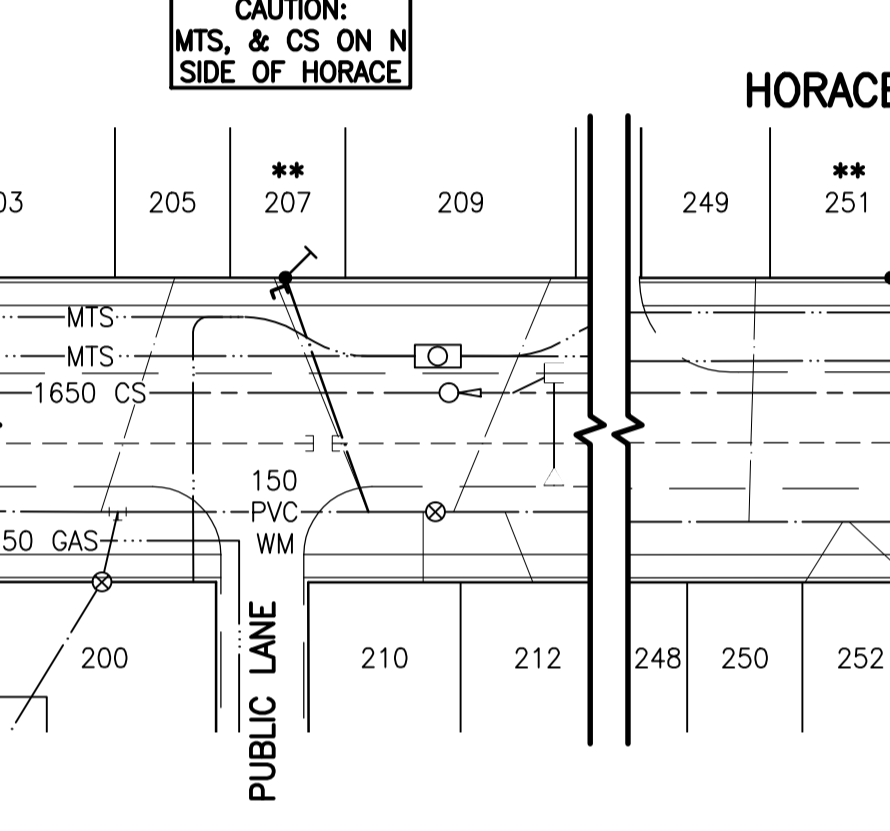
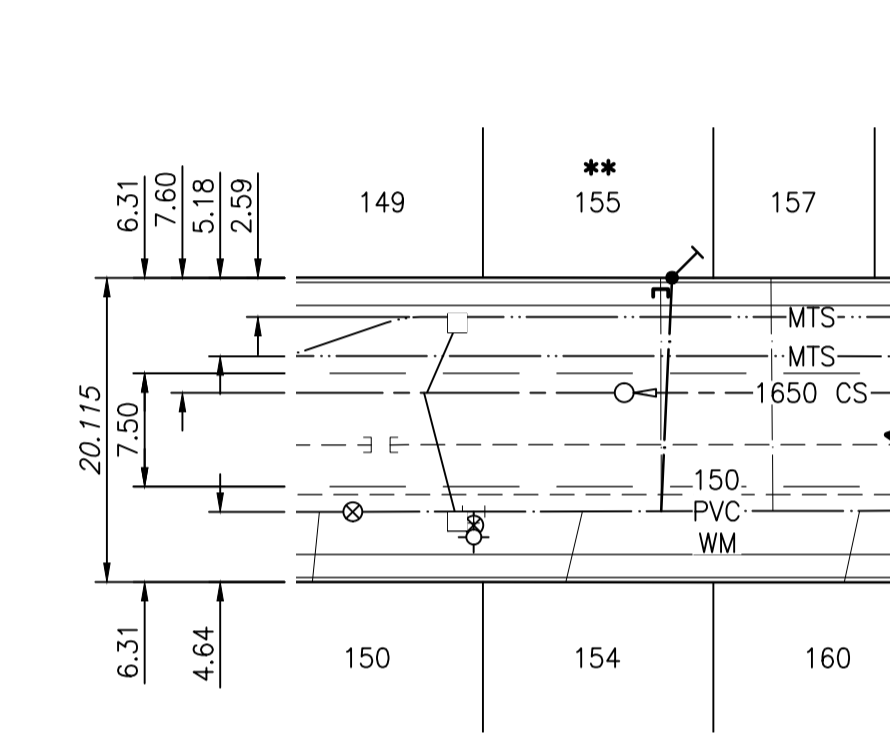
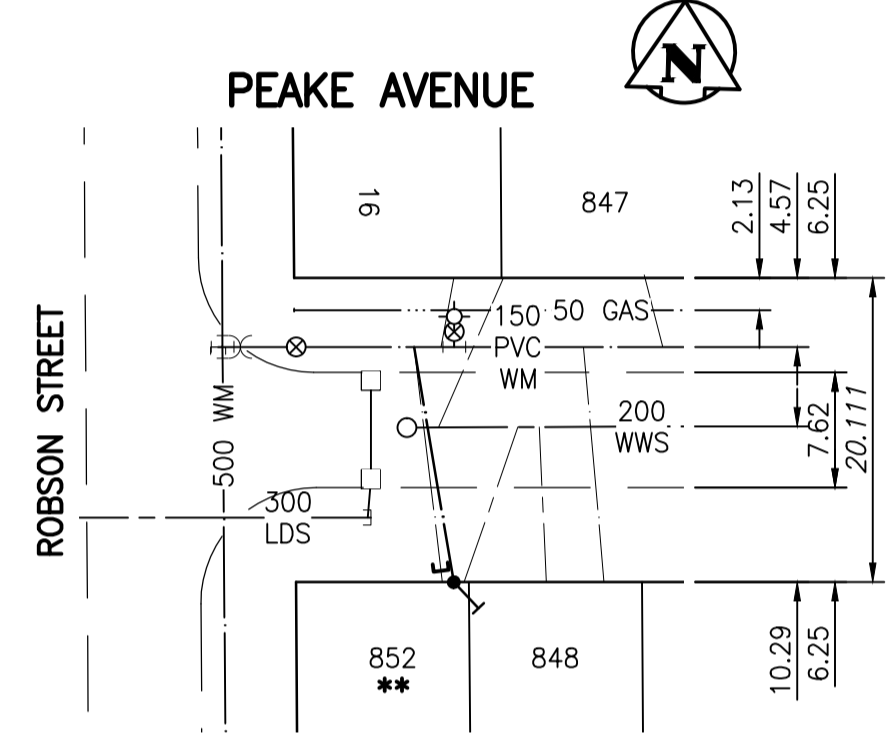


CAUTION:
GAS, LDS ON N SIDE
OF RUE LA VERENDRYE



WATER SERVICE INFORMATION						
ADDRESS	SIZE & TYPE STREET	SIZE & TYPE PROPERTY	STOP COCK LOCATION SHORT & LONG	CORP LOCATION FROM STOP COCK	REMARKS	
** 203 RUE LA VERENDRYE RESIDENTIAL	19 COPPER	19 COPPER	3.66R/LHL 103.94 EEL ST. JOSEPH		RENEW TO PL WITH 20 COPPER	
** 904 HOKA ST. RESIDENTIAL	19 COPPER	19 COPPER	4.45 SNL HOUSE 8.22 FROM FRONT OF HOUSE		RENEW TO PL WITH 20 COPPER	
** 420 WHITTIER AVE. W RESIDENTIAL	19 COPPER	19 COPPER	2.13 WEL LOT		RENEW TO PL WITH 20 COPPER	
** 114 RAVELSTON AVE. E RESIDENTIAL	19 COPPER	19 COPPER	1.22 EEL HOUSE 7.62 FROM HOUSE FRONT		RENEW TO PL WITH 20 COPPER	
** 852 PEAKE AVE. RESIDENTIAL	19 COPPER	19 COPPER	1.4 WEL HOUSE	2.99 W OF S/C	RENEW TO PL WITH 20 COPPER	
** 155 HORACE ST. RESIDENTIAL	19 COPPER	19 COPPER	5.33 RL CR OF HOUSE 120.10 E OF TACHE		RENEW TO PL WITH 20 COPPER	
** 207 HORACE ST. RESIDENTIAL	19 COPPER	19 COPPER	3.05 RL CR OF HOUSE 80.16 E OF KENNY	36.58 E OF HYDRANT	RENEW TO PL WITH 20 COPPER	
** 251 HORACE ST. RESIDENTIAL	19 COPPER	19 COPPER	0.30 EEL HOUSE		RENEW TO PL WITH 20 COPPER	
** 263 HORACE ST. RESIDENTIAL	19 COPPER	19 COPPER	2.13 WEL BUILDING 113.69 E OF TRAVERSE	3.3 E OF HYDRANT	RENEW TO PL WITH 20 COPPER	
** 289 HORACE ST. RESIDENTIAL	19 COPPER	19 COPPER	0.91 RL CR OF HOUSE 217.93 E OF TRAVERSE	0.88 E OF HYDRANT	RENEW TO PL WITH 20 COPPER	
** 111 BIRCHDALE AVE. RESIDENTIAL			3.96 LR CR OF HOUSE 6.40 NSL 111 BIRCHDALE		RENEW TO PL WITH 20 COPPER	
** 448 EDGEWOOD ST. RESIDENTIAL	19 COPPER	19 COPPER	115.52 EEL YOUVILLE		RENEW TO PL WITH 20 COPPER	
** 550 TREMBLAY ST. RESIDENTIAL	19 COPPER	19 COPPER	2.44 WEL HOUSE	OPP S/C	RENEW TO PL WITH 20 COPPER	
** 17 VIVAN AVE. RESIDENTIAL	12 LEAD	12 LEAD	2.74 EWL HOUSE		RENEW TO PL WITH 20 COPPER	
** 171 BERKSHIRE BAY RESIDENTIAL	19 COPPER	19 COPPER	2.74 RL CR OF HSE		RENEW TO PL WITH 20 COPPER	
** 344 SPEERS RD. RESIDENTIAL	19 COPPER	19 COPPER	3.66 R OF L CORNER HSE		RENEW TO PL WITH 20 COPPER	

** - PREVIOUSLY FROZEN ON CITY SIDE



APPROXIMATE SEWER DEPTHS			
ADDRESS	DEPTH TO INVERT (m)*	ADDRESS	DEPTH TO INVERT (m)*
203 RUE LA VERENDRYE	375 LDS 2.9 / 300 WWS 6.3	263 HORACE ST.	1650 CS 4.8
904 HOKA ST.	450 WWS 5.6 / 525 LDS 2.9	289 HORACE ST.	1650 CS 3.8
420 WHITTIER AVE. W	200 WWS 3.3	111 BIRCHDALE AVE.	450 CS 4.5 / 900 LDS 6.3
114 RAVELSON AVE. E	200 WWS 2.2 / 750 LDS UNKNOWN	446 EDGEWOOD ST.	300 CS 2.8 / 750 LDS 6.7
852 PEAKE AVE.	200 WWS 3.3	550 TREMBLAY ST.	-
155 HORACE ST.	1650 CS 5.9	17 VIVAN AVE.	-
207 HORACE ST.	1650 CS 5.4	171 BERKSHIRE BAY	250 WWS 2.8
251 HORACE ST.	1050 CS 4.8	344 SPEERS RD.	250 WWS E 3.2 / 900 WM UNKNOWN / 250 WWS W 3.4 / 900 WWS UNKNOWN

* CONTRACTOR TO VERIFY IN THE FIELD

WARNING

IF POWER EQUIPMENT OR EXPLOSIVES ARE TO BE USED FOR EXCAVATION ON THIS PROJECT THE CONTRACTOR MUST:
1) NOTIFY THE GAS COMPANY OF THE PROPOSED LOCATION OF EXCAVATION.
2) TAKE PRECAUTION TO AVOID DAMAGE TO GAS COMPANY INSTALLATIONS.
SEE PROVINCIAL REGULATION 140/92 FOR DETAILS

150 WM		150 WM		HYDRO		150 WM		WATERMAIN		150 WM	
HYDRANT	HYDRANT	CONCRETE	CONCRETE	ASPHALT	ASPHALT	SIDEWALK	SIDEWALK	PROPERTY LINE	PROPERTY LINE	SURVEY BAR	SURVEY BAR
VALVE	VALVE	MANHOLE	MANHOLE	CATCH BASIN	CATCH BASIN	CURB INLET	CURB INLET	JUNCTIONS	JUNCTIONS	CULVERT	CULVERT
LAND DRAINAGE SEWER	LAND DRAINAGE SEWER	WASTE WATER SEWER	WASTE WATER SEWER	WATERMAIN	WATERMAIN	HYDRANT, VALVE	HYDRANT, VALVE	LAND DRAINAGE SEWER	LAND DRAINAGE SEWER	WASTE WATER SEWER	WASTE WATER SEWER
300 LDS	300 LDS	250 WWS	250 WWS	300 CI WM	300 CI WM	450 CS	450 CS	150 CI WM	150 CI WM	250 WWS	250 WWS
250 WWS	250 WWS	300 CS	300 CS	750 LDS	750 LDS	150 AC WM	150 AC WM	150 WM	150 WM	250 WWS	250 WWS
EXISTING	EXISTING	PROPOSED	PROPOSED	EXISTING	EXISTING	PROPOSED	PROPOSED	EXISTING	EXISTING	PROPOSED	PROPOSED

LOCATION APPROVED UNDERGROUND STRUCTURES	
SUPV. U/G STRUCTURES COMMITTEE	DATE
NOTE: LOCATION OF UNDERGROUND STRUCTURES AS SHOWN ARE BASED ON THE BEST INFORMATION AVAILABLE BUT NO GUARANTEE IS GIVEN THAT ALL EXISTING UTILITIES ARE SHOWN OR THAT THE GIVEN LOCATIONS ARE EXACT. CONFIRMATION OF EXISTENCE AND EXACT LOCATION OF ALL SERVICES MUST BE OBTAINED FROM THE INDIVIDUAL UTILITIES BEFORE PROCEEDING WITH CONSTRUCTION.	
NO.	REVISIONS
DATE	BY

Stantec Consulting Ltd.
905 Waverley Street, Winnipeg, Manitoba
Tel 204-489-5900 Fax 204-453-9012

DESIGNED BY: R.M.S. CHECKED BY: H.A.K.
DRAWN BY: A.D.L. APPROVED BY: H.A.K.

HOR. SCALE: 1:500
VERTICAL: N/A

RELEASED FOR CONSTRUCTION: _____
DATE: JUNE, 2011

APCGM
Certificate of Authorization
Stantec Consulting Ltd.
No. 1301 Date: _____

THE CITY OF WINNIPEG
WATER AND WASTE DEPARTMENT
ENGINEERING DIVISION

2011 WATER SERVICE REPLACEMENT PROGRAM
CONTRACT No. 12
AREA 2 - SECTION C &
AREA 3 - SECTION A

SHEET 4 OF 5
CAD FILE DRAWING NUMBER 13030c-203-751.DWG
CITY DRAWING NUMBER D-12482

CONSULTANT DRAWING NO. C-203

BID OPPORTUNITY 534-2011