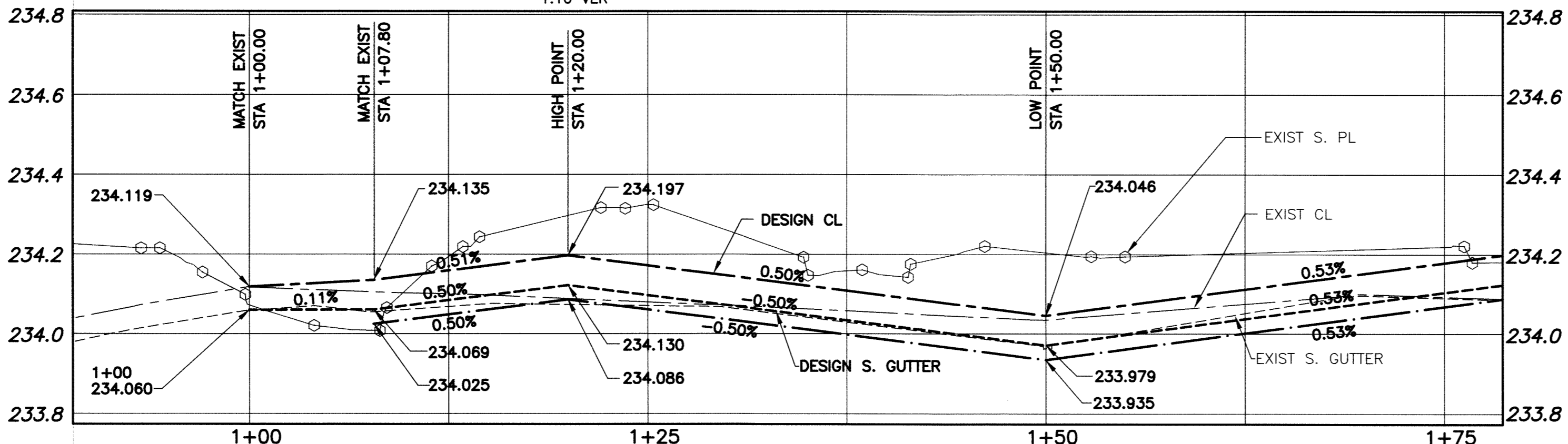


**EAST BOUND PROFILE - NORTH LANE**

SCALE: 1:250 HOR  
1:10 VER

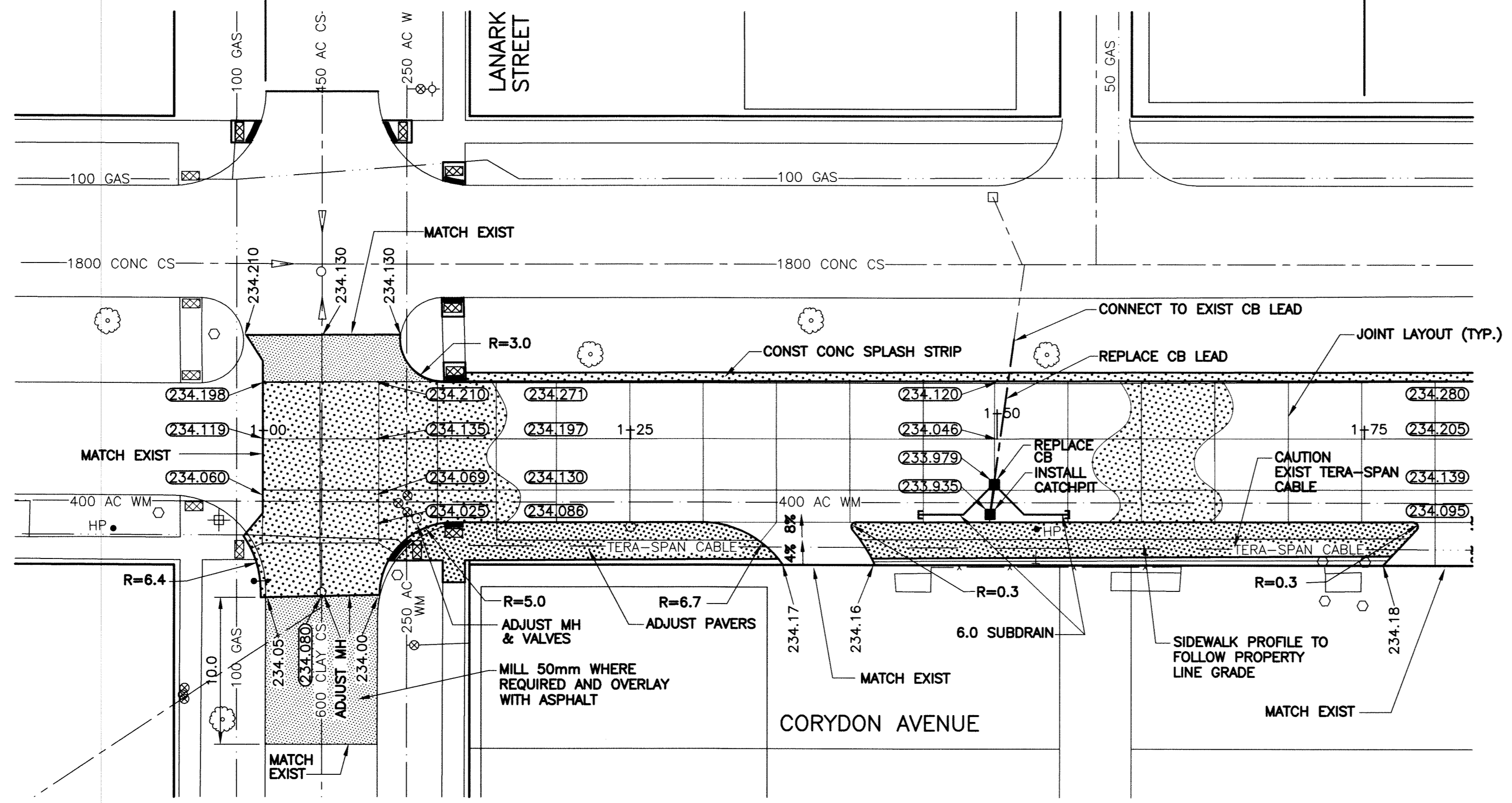


**EAST BOUND PROFILE - SOUTH LANE**

SCALE: 1:250 HOR  
1:10 VER

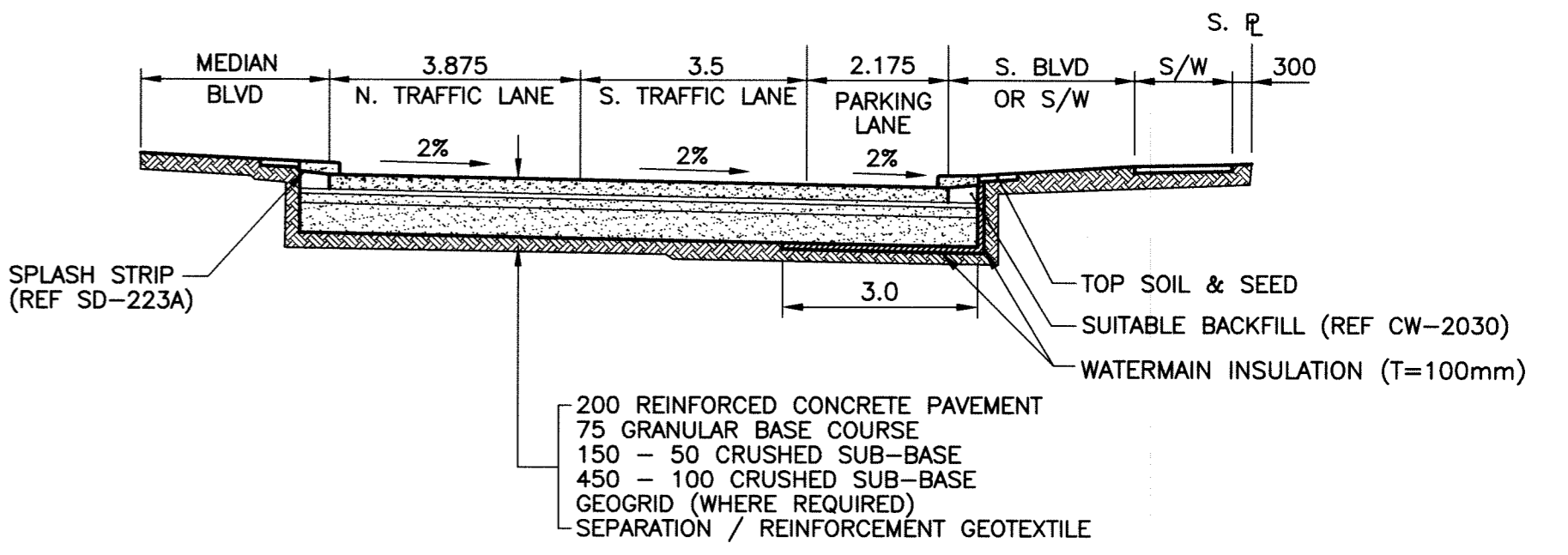
LIMIT OF CONSTRUCTION  
STA 1+00

MATCH LINE  
STA 1+75



**PAVEMENT PLAN**

SCALE: 1:250 HOR



**ROAD CROSS SECTION WITH PARKING LANE**

SCALE: 1:100

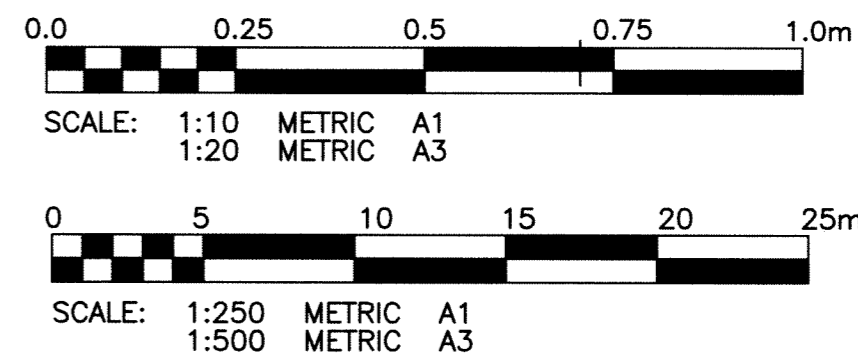
- NOTE:**
- STATION CHAINAGE IS BASED ON CENTRELINE OF CORYDON AVENUE.
  - ADJUST NEW MH AND CB RIMS TO NEW GRADES.
  - PLUG SUBDRAINS AT TERMINAL ENDS.
  - REGRADE EXISTING PRIVATE SIDEWALKS AS REQUIRED.
  - ISOLATE ALL POLES, BASES AND PILES WITHIN SIDEWALK (SD-228C).
  - AVOID DAMAGE TO EXISTING TREES WITHIN THE LIMITS OF CONSTRUCTION.
  - ALL PAVEMENT MEASUREMENTS ARE TO BACK OF CURB.
  - CONTACT TERASpan TO LOWER FIBRE OPTIC CABLE WHERE REQUIRED.
  - CONSTRUCT MANHOLE AND CATCH BASIN ISOLATIONS IN ACCORDANCE WITH SD-228C.
  - INSTALL DETECTABLE WARNING SURFACE TILES IN ACCORDANCE WITH SPECIFICATION.
  - CAUTION: THE TERASpan CABLE IS LOCATED ALONG THE ENTIRE LENGTH OF THE PROJECT AND WITHIN 300mm OF THE GROUND/PAVEMENT SURFACE.
  - INSTALL 100mm THICK APPROVED INSULATION BETWEEN NEW CATCH BASINS AND EXISTING 400 AC WATERMAIN. INSTALL INSULATION ACCORDING TO SPECIFICATION.
  - INSTALL 100mm THICK INSULATION ACCORDING TO THE ROAD CROSS SECTION FROM STA. 1+00 TO STA. 4+00. INSTALL 3.0m WIDE INSULATION AS CLOSE TO THE SOUTH WALL OF THE ROADWAY EXCAVATION AS POSSIBLE.

**PROPERTY LIMITS DELINEATION**

DELINEATION OF PROPERTY LIMITS AS SHOWN ON THIS DWG DOES NOT REPRESENT A "LEGAL SURVEY". KGS GROUP MAKES NO REPRESENTATION OR WARRANTY AS TO THE ACCURACY OF PROPERTY LIMITS DELINEATED ON THIS DWG, NOR ON THE DIMENSIONAL ACCURACY OF DWG FEATURES RELATIVE TO THOSE PROPERTY LIMITS.

**WARNING**

- NOTIFY THE GAS COMPANY OF THE PROPOSED LOCATION OF EXCAVATION.
- TAKE PRECAUTION TO AVOID DAMAGE TO GAS COMPANY INSTALLATIONS.
- SEE PROVINCIAL REGULATION 210/72 FOR DETAILS.



**METRIC**

WHOLE NUMBERS INDICATE MILLIMETRES  
DECIMALIZED NUMBERS INDICATE METRES

**APEGM**  
Certificate of Authorization  
KGS Group  
No. 245

EXISTING	LEGEND-PLAN	PROPOSED	EXISTING	LEGEND-PLAN	PROPOSED	EXISTING	LEGEND-PROFILE	PROPOSED
300 LDS	LAND DRAINAGE SEWER	300 LDS	---	BACK OF CURB	---	---	---	---
250 WWS	WASTE WATER SEWER	250 WWS	---	CONCRETE	---	---	---	---
---	GAS	---	---	ASPHALT	---	---	---	---
---	HYDRO	---	---	SIDEWALK	---	---	---	---
---	M.T.S.	---	---	CURB RAMP	---	---	---	---
150 WM	WATERMAIN	150 WM	---	PROPERTY LINE	---	---	---	---
+	HYDRANT	+	+	DETECTABLE WARNING TILES	+	+	BLVD PROFILE	---
+	VALVE	+	+	TEST HOLE	+	+	S PROPERTY PROFILE	---
+	MANHOLE	+	+	GUY WIRE	+	+	C PROFILE	---
+	CATCH BASIN	+	+	SURVEY BAR	+	+	N GUTTER PROFILE	---
+	CURB INLET	+	+	GEODETIC BENCHMARK	+	+	S GUTTER PROFILE	---
+	LIGHT STANDARD	+	+	ELEVATION	+	+	S PARK GUTTER PROFILE	---
+	POLES	+	+	(32.231)	+	+		

**LOCATION APPROVED UNDERGROUND STRUCTURES**

SUPV. U/G STRUCTURES COMMITTEE DATE

NOTE: LOCATION OF UNDERGROUND STRUCTURES AS SHOWN ARE BASED ON THE BEST INFORMATION AVAILABLE BUT NO GUARANTEE IS GIVEN THAT ALL EXISTING UTILITIES ARE SHOWN OR THAT THE GIVEN LOCATIONS ARE EXACT. CONFIRMATION OF EXISTENCE AND EXACT LOCATION OF ALL SERVICES MUST BE OBTAINED FROM THE INDIVIDUAL UTILITIES BEFORE PROCEEDING WITH CONSTRUCTION.

NO.	REVISIONS	DATE	BY
0	ISSUED FOR TENDER	11/07/04	[Signature]

**KGS GROUP CONSULTING ENGINEERS**

DESIGNED BY: JDF  
DRAWN BY: DMW

CHECKED BY: MCR  
APPROVED BY: RJH

HOR. SCALE: 1:250  
VERTICAL: 1:50

RELEASED FOR CONSTRUCTION: [Signature]

DATE: 2011/03/09

ENGINEER'S SEAL

**J.D. PRIESEN**  
Member 23875  
Professional Engineer

CONSULTANT DRAWING NO. 11-0107-08\_01

**THE CITY OF WINNIPEG PUBLIC WORKS DEPARTMENT TRANSPORTATION ENGINEERING DIVISION**

PROJECT TITLE: CORYDON AVENUE EASTBOUND PAVEMENT RECONSTRUCTION

LANARK STREET TO BOREBANK STREET STA 1+00 TO STA 1+75

SHEET 01 OF 13  
COMPUTER FILE NAME: CORYDON-PLOT  
CITY DRAWING NUMBER: P-3328-01

P:\Projects\2011\11-0107-08\DocControl\Released\DWG\VP-3328-01-Rev.0.dwg - Tab: 01 Plotted By: Dberoch 07/04/2011 Mon 1:39pm