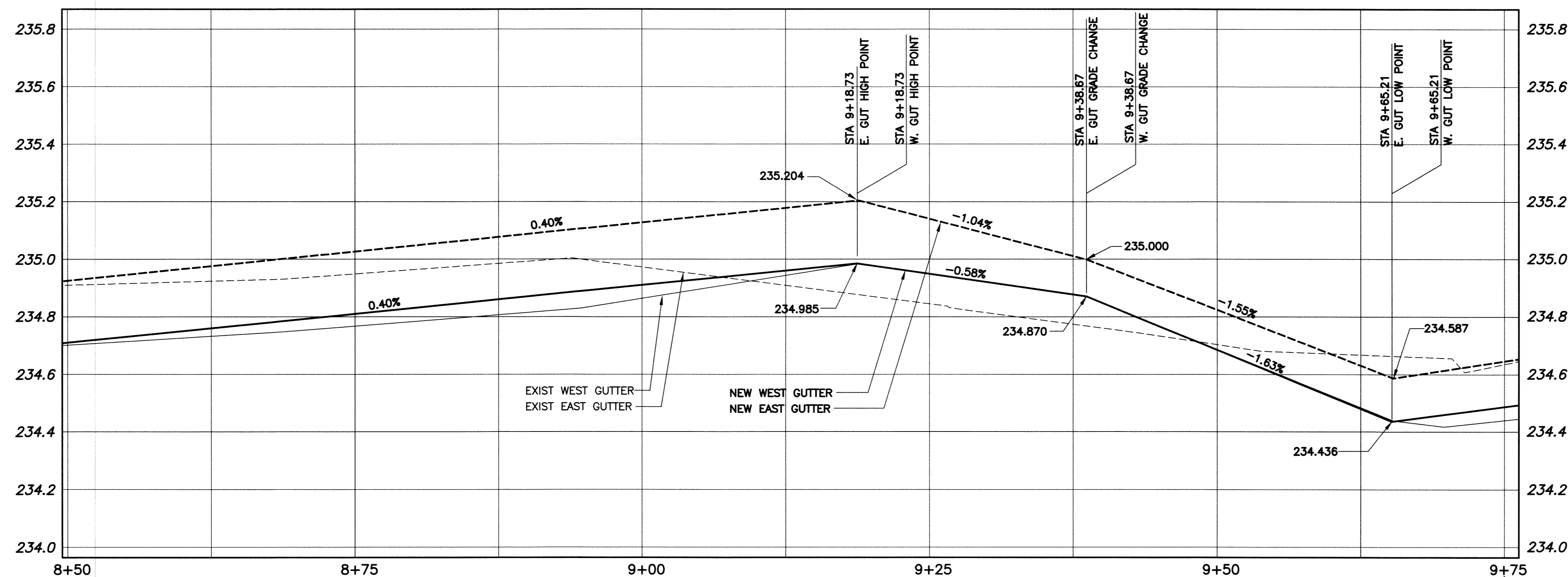
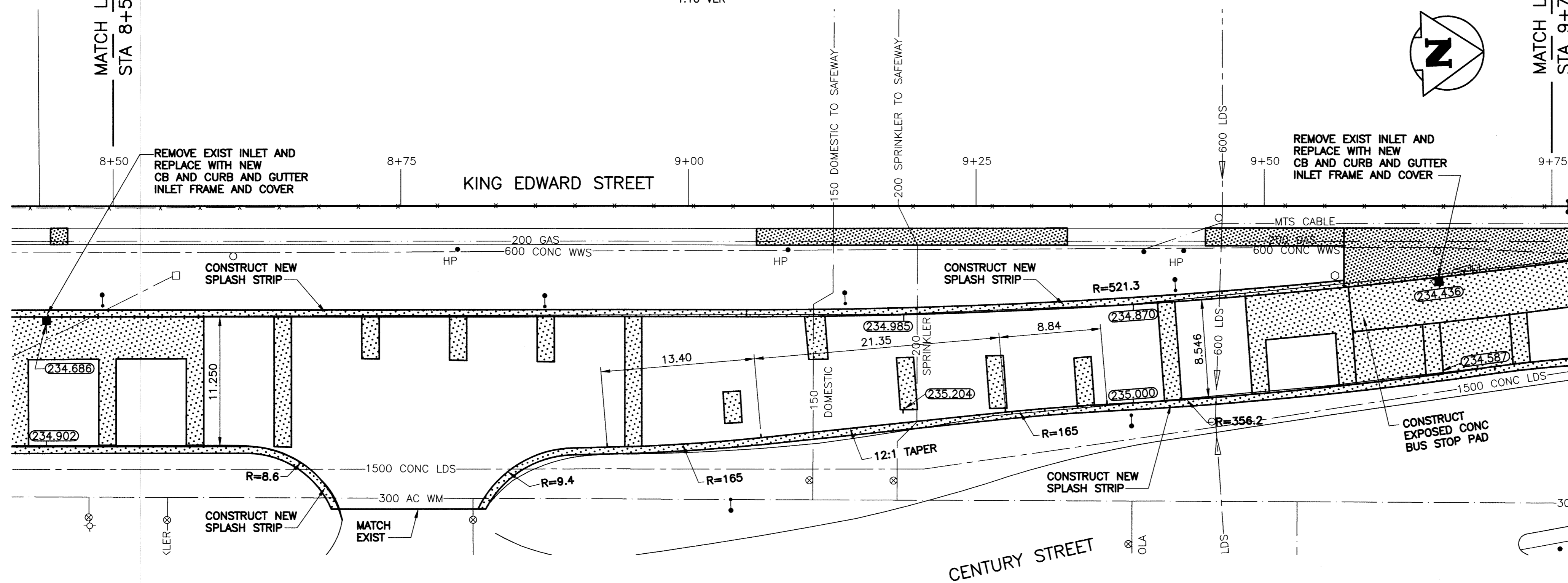
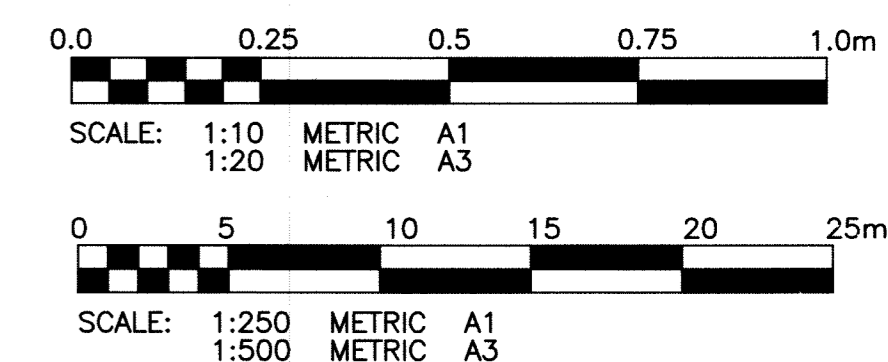


- GENERAL NOTES:**
1. STATION CHAINAGE IS BASED ON CENTRELINE OF KING EDWARD STREET
 2. ADJUST MH AND CB RIMS TO NEW GRADES
 3. DESIGN GRADES TO BE CONFIRMED BY KGS GROUP AFTER ASPHALT PLANING OF EACH LANE.
 4. AVOID DAMAGE TO EXISTING TREES WITHIN THE LIMITS OF CONSTRUCTION.
 5. ISOLATE ALL POLES, BASES AND PILES WITHIN BUS STOP SIDEWALK (SD-228C).
 6. ALL PAVEMENT MEASUREMENTS ARE TO BACK OF CURB.



PAVEMENT PROFILE
SCALE: 1:250 HOR
1:10 VER

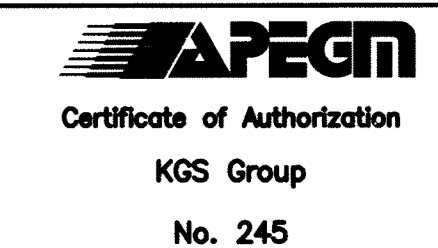


PAVEMENT PLAN
SCALE: 1:250 HOR

- NOTE:**
1. STATION CHAINAGE IS BASED ON CENTRELINE OF STREET RIGHT OF WAY.
 2. ADJUST MH AND CB RIMS TO NEW GRADES.
 3. PLUG SUBDRAINS AT TERMINAL ENDS.
 4. REGRADE EXISTING SIDEWALKS AS REQUIRED.
 5. ISOLATE ALL POLES, BASES AND PILES WITHIN RIGHT OF WAY

PROPERTY LIMITS DELINEATION
DELINEATION OF PROPERTY LIMITS AS SHOWN ON THIS DWG DOES NOT REPRESENT A "LEGAL SURVEY". KGS GROUP MAKES NO REPRESENTATION OR WARRANTY AS TO THE ACCURACY OF PROPERTY LIMITS DELINEATED ON THIS DWG, NOR ON THE DIMENSIONAL ACCURACY OF DWG FEATURES RELATIVE TO THOSE PROPERTY LIMITS.

METRIC
WHOLE NUMBERS INDICATE MILLIMETRES
DECIMALIZED NUMBERS INDICATE METRES



P:\Projects\2011\11-0107-08\DocControl\ToBeIssued\DWG\11-0107-08-11-Rev 0.dwg - Tab: 11 Plotted By: DDeroche 07/04/2011 (Mon 1:36pm)

EXISTING	LEGEND-PLAN	PROPOSED	EXISTING	LEGEND-PLAN	PROPOSED	EXISTING	LEGEND-PROFILE	PROPOSED
300 LDS	LAND DRAINAGE SEWER	300 LDS	+	TEST HOLE				
250 WWS	WASTE WATER SEWER	250 WWS	-	GUY WIRE				
	GAS		••	LIGHT STANDARD				
	HYDRO		---	BACK OF CURB				
	M.T.S.		---	CONCRETE	▨	▨	DETECTABLE TILE	▨
150 WM	WATERMAIN	150 WM	---	ASPHALT	▨	▨	LEGEND-PLAN	PROPOSED
⊕	HYDRANT	+	---	SIDEWALK	▨	▨		
⊙	VALVE	•	---	RAMP CURB	▨	▨		
○	MANHOLE	•	---	PROPERTY LINE	---	---		
□	CATCH BASIN	⊕	---	SURVEY BAR	+	+	DECELERATION LANE	---
▽	CURB INLET	⊕	---	GEODETIC BENCHMARK	•	•	WEST GUTTER	---
•	POLES	⊕	---	ELEVATION	(32.231)	(32.231)	EAST GUTTER	---

LOCATION APPROVED UNDERGROUND STRUCTURES
SUPV. U/G STRUCTURES COMMITTEE DATE
NOTE: LOCATION OF UNDERGROUND STRUCTURES AS SHOWN ARE BASED ON THE BEST INFORMATION AVAILABLE BUT NO GUARANTEE IS GIVEN THAT ALL EXISTING UTILITIES ARE SHOWN OR THAT THE GIVEN LOCATIONS ARE EXACT. CONFIRMATION OF EXISTENCE AND EXACT LOCATION OF ALL SERVICES MUST BE OBTAINED FROM THE INDIVIDUAL UTILITIES BEFORE PROCEEDING WITH CONSTRUCTION.

B.M. ELEV.	
DESIGNED BY	JDF
CHECKED BY	RJH
DRAWN BY	DMW
APPROVED BY	
HOR. SCALE:	1:250
VERTICAL:	1:50
ISSUED FOR TENDER	11/07/04
NO. REVISIONS	DATE BY

KGS GROUP CONSULTING ENGINEERS

DESIGNED BY: JDF
CHECKED BY: RJH
DRAWN BY: DMW
APPROVED BY: [Signature]
HOR. SCALE: 1:250
VERTICAL: 1:50
ISSUED FOR TENDER: 11/07/04
NO. REVISIONS: [Blank]
DATE BY: 2011/03/09

ENGINEER'S SEAL
Member 23875
2011

THE CITY OF WINNIPEG PUBLIC WORKS DEPARTMENT TRANSPORTATION ENGINEERING DIVISION

PROJECT TITLE: KING EDWARD STREET SOUTHBOUND PAVEMENT REHABILITATION
SASKATCHEWAN AVE TO DUBLIN AVE STA 8+50 TO STA. 9+75

SHEET 11 OF 13
COMPUTER FILE NAME: KING EDWARD-11PLOT
CITY DRAWING NUMBER: P-3328-11

CONSULTANT DRAWING NO. 11-0107-08_11