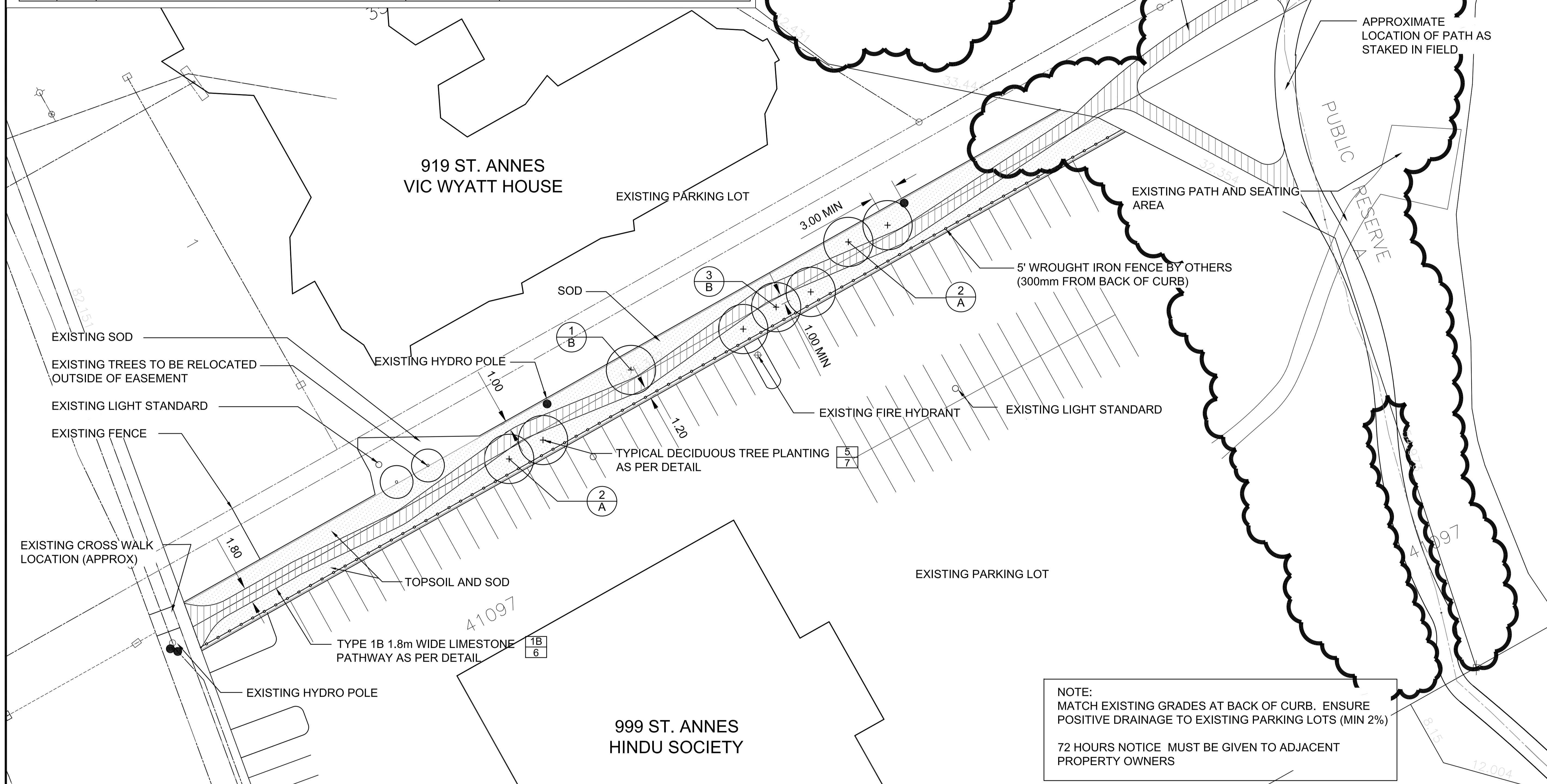


**PLANT LIST**

KEY	QTY.	COMMON NAME/BOTANICAL NAME	SIZE	REMARKS
<b>DECIDUOUS TREES</b>				
A	4	NORTHERN BLAZE WHITE ASH/ FRAXINUS AMERICANA 'JEFNOR'	60mm cal.	SPECIMEN, B&B, MACHINE DUG WITH MIN. 10 BRANCHES IN WELL BRANCHED HEAD, STRAIGHT TRUNK, MIN. HT. 4500mm, BRANCHING HT. 1800mm.
B	4	AMERICAN ELM/ ULMUS AMERICANA	60mm cal.	SPECIMEN, B&B, MACHINE DUG WITH MIN. 10 BRANCHES IN WELL BRANCHED HEAD, STRAIGHT TRUNK, MIN. HT. 4500mm, BRANCHING HT. 1800mm.



**NOTE:**  
MATCH EXISTING GRADES AT BACK OF CURB. ENSURE POSITIVE DRAINAGE TO EXISTING PARKING LOTS (MIN 2%)  
  
72 HOURS NOTICE MUST BE GIVEN TO ADJACENT PROPERTY OWNERS

EXISTING	LEGEND-PLAN	PROPOSED	EXISTING	LEGEND-PLAN	PROPOSED
---	CONTOUR LINE	---	---	LIMIT OF FLOOD AREAS (PROVIDED BY CITY OF WINNIPEG)	---
---	PATHWAY - TYPE 1	---	---	DISTANCE ALONG PATH	REF: 1487m +
---	SOD	---	---		
---	MULCH	---	---		
---	PROPERTY LINE	---	---		
---	SURVEY BAR	---	---		
---	ELEVATION	---	---		

  
**McGOWAN RUSSELL**

**LOCATION APPROVED UNDERGROUND STRUCTURES**

SUPV. U/G STRUCTURES COMMITTEE DATE

**NOTE:**  
LOCATION OF UNDERGROUND STRUCTURES AS SHOWN ARE BASED ON THE BEST INFORMATION AVAILABLE BUT NO GUARANTEE IS GIVEN THAT ALL EXISTING UTILITIES ARE SHOWN OR THAT THE GIVEN LOCATIONS ARE EXACT. CONFIRMATION OF EXISTENCE AND EXACT LOCATION OF ALL SERVICES MUST BE OBTAINED FROM THE INDIVIDUAL UTILITIES BEFORE PROCEEDING WITH CONSTRUCTION.

NO.	REVISIONS	DATE	BY
1	ISSUE FOR TENDER	11.06.28	MRG

**Stantec Consulting Ltd.**  
905 Waverley Street, Winnipeg, Manitoba  
Tel 204-489-5900 Fax 204-453-9012

DESIGNED BY: P.B.	CHECKED BY: J.W.
DRAWN BY: P.B.	APPROVED BY: S.R.
HOR. SCALE: 1:500	RELEASED FOR CONSTRUCTION: DATE
VERTICAL: N/A	DATE: 28.02.11

ENGINEER  
PROVINCE OF MANITOBA  
**R.P. KURLKO**  
MEMBER 6159  
REGISTERED PROFESSIONAL ENGINEER  
CONSULTANT DRAWING NO. C-120

**THE CITY OF WINNIPEG**  
PUBLIC WORKS DEPARTMENT  
ENGINEERING DIVISION

**SEINE RIVER PATHWAY**  
1201 ST. ANNES ROAD TO SHOREHILL DRIVE  
CONNECTION TO ST. ANNES ROAD  
2010 ACTIVE TRANSPORTATION  
INFRASTRUCTURE STIMULUS PROGRAM

SHEET 7 OF 7  
CAD FILE DRAWING NUMBER 05260c-120-741.dwg  
CITY DRAWING NUMBER W-381-7