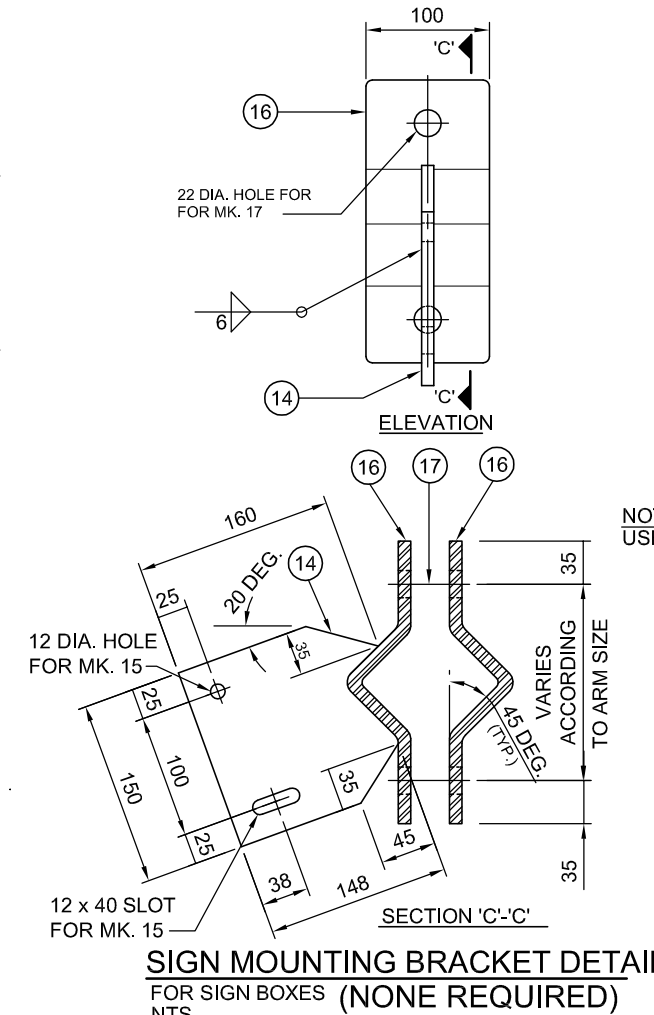
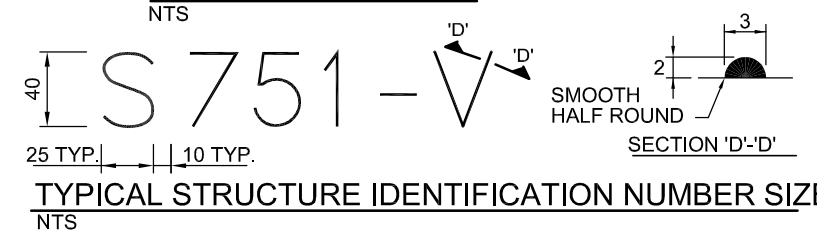


- NOTES**
1. PROVIDE "RAISED" IDENTIFICATION NO. WITH WELDING ELECTRODE FOR THE SIGN STRUCTURE.
 2. GRIND ALL SHARP POINTS AND EDGES.



- GENERAL NOTES**
1. **DESIGN DATA**
AASHTO STANDARD SPECIFICATIONS FOR STRUCTURAL SUPPORTS FOR HIGHWAY SIGNS, LUMINAIRES, AND TRAFFIC SIGNALS, 5TH EDITION, 2009.
DESIGN WIND LOAD = 1.44 kPa (30 PSF)
DESIGN ICE LOAD = 0.15 kPa (3 PSF)
 2. ALL MATERIALS SHALL BE CSA G40.21 - 350W STRUCTURAL STEEL UNLESS OTHERWISE NOTED.
 3. ALL MATERIALS EXCEPT STAINLESS STEEL AND ALUMINUM SHALL BE HOT-DIP GALVANIZED IN ACCORDANCE WITH CSA G164 TO A MIN. NET RETENSION OF 610 g/m²
 4. ALL AREAS OF DAMAGED GALVANIZING SHALL BE REPAIRED WITH SELF-FLUXING LOW TEMPERATURE, ZINC BASED ALLOY ROD OR SPRAY-ON COATING CALLED "ZINGA".
 5. NEW STRUCTURE TO BE INSTALLED ON NEW CONCRETE PILE FOUNDATION AND ANCHOR BOLTS.
 6. NEW 50 mm. MAX. GROUT PAD TO BE PROVIDED AFTER INSTALLING THE STRUCTURE.
 7. **SIGNS**
TWO SIGNS (PLATES)
MAXIMUM SIZE 915 x 915 mm. SUPPLIED AND INSTALLED (C/W BRACKETS) BY THE CITY OF WINNIPEG TRAFFIC SERVICES BRANCH.
 8. THE CONTRACTOR SHALL FIELD MEASURE THE EXISTING ANCHOR BOLTS LAYOUT AND VERIFY THAT THE NEW BASE PLATE WILL FIT OVER THE ANCHOR BOLTS

BILL OF MATERIALS		
MK	QTY	DESCRIPTION
1	1	OCTAGONAL SHAFT 240 A/F TO 200 A/F x 6.35
2	1	OCTAGONAL ARM 200 A/F TO 130 A/F x 6.35
3	1	BASE PLATE 40 THICK
4		
5	1	BACKUP STRIP 40 x 6
6	1	END PLATE 130 A/F OCTAGONAL 6 THICK
7	8	19 DIA. A325 BOLTS GALVANIZED
8	2	FLANGE PLATE 400 x 400 x 32
9	2	SIDE GUSSET PLATE 20 x 400 x 135
10	1	TOP GUSSET PLATE 10 THICK
11	1	BOTTOM GUSSET PLATE 10 THICK
12	1	COVER PLATE 210 DIA x 10 THICK
13	2	OCTAGONAL INTERIOR GUSSET PLATE 8 THICK
		SIGN MOUNTING BRACKETS (NONE REQ'D.)
14	4	BRACKET PLATE 10 THICK
15	8	10 DIA. BOLTS S/S (TYPE 316)
16	8	CLAMP PLATE 10 THICK
17	8	20 DIA. BOLT S/S (TYPE 316)
		HANDHOLE MARK H1
18	1	COVER PLATE 11 GA. x 160x 340 (A569)
19	1	REINFORCING RING 8 x 65 x 830
20	2	CLAMP BAR 6 x 40 x 180
21	2	10 DIA. x 140 BOLT S/S (TYPE 316)
22	1	GROUND STUD ASSEMBLY 10 DIA. x 40
		HANDHOLE MARK H2
23	1	COVER PLATE 11 GA. x 130 x 220 (A569)
24	1	REINFORCING RING 8 x 65 x 555
25	1	CLAMP BAR 6 x 40 x 150
21	1	10 DIA. x 140 BOLT S/S (TYPE 316)
22	1	GROUND STUD ASSEMBLY 10 DIA. x 40

*NOTES:

1. MARK NO. 15 & 17 C/W NUT AND WASHER.
2. MARK NO. 20 & 25 C/W 8-DIA. PUNCHED 10 N.C. TAPPED AT THE CENTER OF PLATE.
3. MARK NO. 21 C/W CUP WASHER.
4. MARK NO. 22 C/W 2-10 DIA. HEX NUT, 2-TERMINAL WASHER. & 1-LOCKWASHER

B.M. ELEV.	DESIGNED BY CDW			
	DRAWN BY APH			
	CHECKED BY SSR		STEEL OVERHEAD SIGN SUPPORT STRUCTURES - 2011 MAINTENANCE WORKS	
	APPROVED BY		CITY DRAWING NUMBER OHSS-11-08 SHEET 8 OF 12	
	HOR. SCALE AS SHOWN	CONSULTANT PROJECT NO. 11-4597		STRUCTURE NO. S751 DETAILS
	VERTICAL AS SHOWN			CONSULTANT DRAWING NUMBER
1	ISSUED FOR TENDER	07/08/11	CDW	
NO.	REVISIONS	DATE	BY	