

SCALE: 1:250 HOR  
1:50 VER

**CONSTRUCTION NOTES:**

1. ALL WORKS TO BE IN ACCORDANCE WITH THE LATEST REVISION OF THE CITY OF WINNIPEG STANDARD CONSTRUCTION SPECIFICATIONS.
2. RESTORE ALL DISTURBED GRASS AREAS WITH IMPORTED TOP SOIL IN ACCORDANCE WITH CW 3510.
3. LEAVE SLUICE GATE IN OPEN POSITION AT ALL TIMES EXCEPT WHEN ON-SITE WORKING ON GATE.
4. PROVIDE TEMPORARY PUMPING OF FLOW IN LAND DRAINAGE SEWER AS REQUIRED DURING CONSTRUCTION.
5. PREVENT EXCAVATED MATERIAL, BACKFILL MATERIAL AND SOIL/WATER SLURRY FROM ENTERING LDS OUTFALL TO THE RIVER.
6. ALL EXISTING UTILITIES USED FOR CONNECTIONS TO HAVE INVERTS VERIFIED PRIOR TO CONSTRUCTION.
7. ALL PIPE UNDER PROPOSED OR EXISTING PAVEMENT TO BE INSTALLED USING TRENCHLESS METHODS OR HAVE GRANULAR BACKFILL.
8. CONTRACTOR TO VERIFY LOCATION OF ALL EXISTING UNDERGROUND UTILITIES.
9. CONTRACTOR TO VERIFY LOCATION OF ALL EXISTING BUILDING SERVICES.
10. CONTRACTOR TO ENSURE TREES ARE NOT DAMAGED DURING CONSTRUCTION.

**PROPERTY LIMITS DELINEATION**

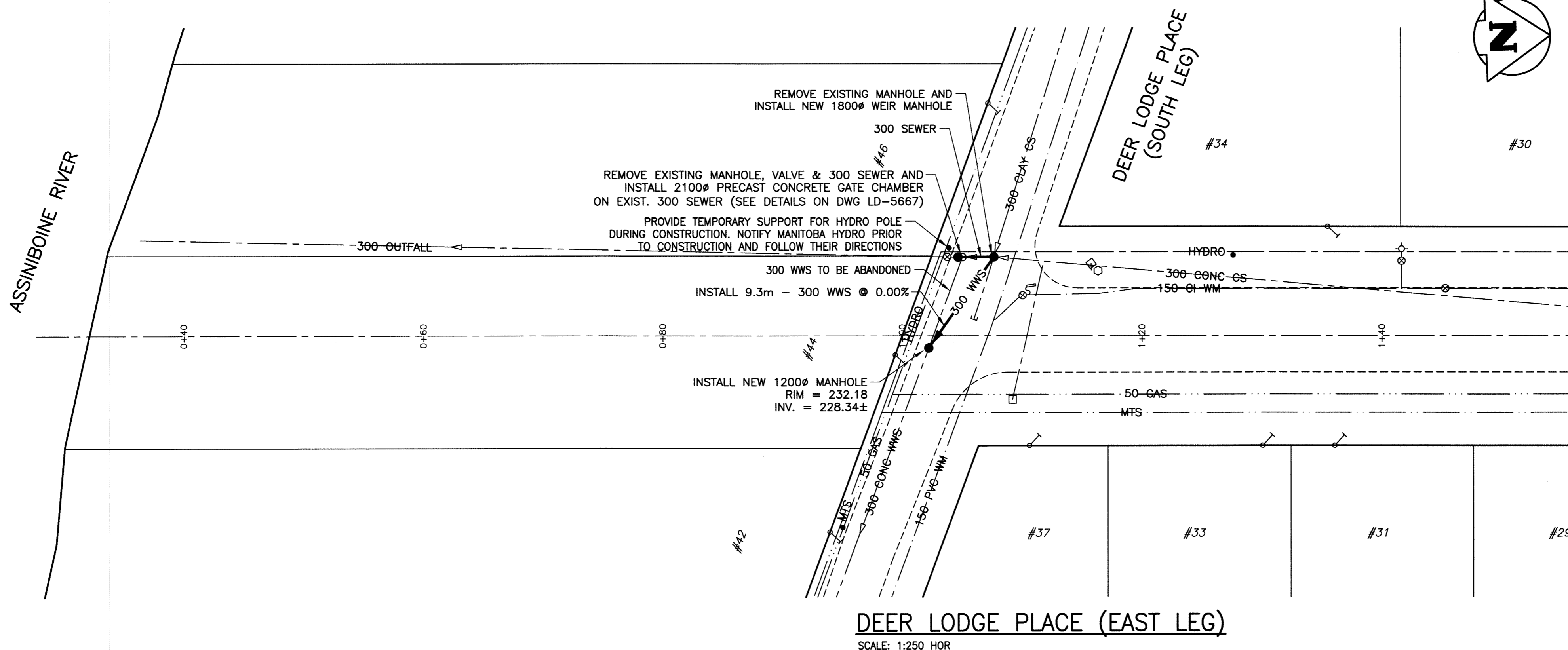
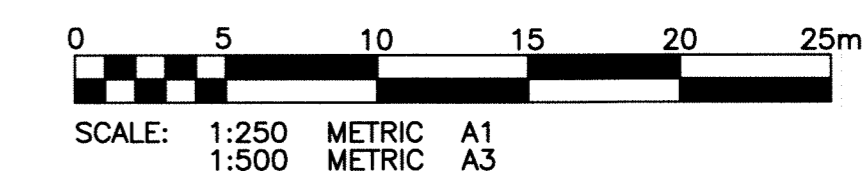
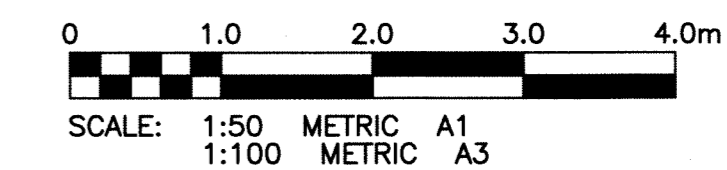
DELINEATION OF PROPERTY LIMITS AS SHOWN ON THIS DWG DOES NOT REPRESENT A "LEGAL SURVEY". KGS GROUP MAKES NO REPRESENTATION OR WARRANTY AS TO THE ACCURACY OF PROPERTY LIMITS DELINEATED ON THIS DWG, NOR ON THE DIMENSIONAL ACCURACY OF DWG FEATURES RELATIVE TO THOSE PROPERTY LIMITS.

**WARNING**

1. NOTIFY THE GAS COMPANY OF THE PROPOSED LOCATION OF EXCAVATION.
2. TAKE PRECAUTION TO AVOID DAMAGE TO GAS COMPANY INSTALLATIONS.
3. SEE PROVINCIAL REGULATION 210/72 FOR DETAILS.

**METRIC**

WHOLE NUMBERS INDICATE MILLIMETRES  
DECIMALIZED NUMBERS INDICATE METRES



**DEER LODGE PLACE (EAST LEG)**

SCALE: 1:250 HOR

**ISSUED FOR TENDER**  
NOT TO BE USED FOR CONSTRUCTION

**APEGM**  
Certificate of Authorization  
KGS Group  
No. 245

**THE CITY OF WINNIPEG**  
WATER AND WASTE DEPARTMENT

PROJECT TITLE  
**2011 OUTFALL GATE CHAMBER UPGRADES**  
CONTRACT No. 24  
**DEER LODGE PLACE (EAST LEG)**  
OUTFALL GATE CHAMBER PLAN/PROFILE

SHEET OF  
**01** OF **08**  
COMPUTER FILE NAME  
**10-0107-17\_CALL**  
CITY DRAWING NUMBER  
**LD-5666**

P:\Projects\2010\10-0107-17\Drawings\10-0107-17\_CALL.dwg - Tab: 001 Plotted By: G. Grewen 08/02/2011 [True 1:24pm]

EXISTING	LEGEND-PLAN	PROPOSED	EXISTING	LEGEND-PLAN	PROPOSED	EXISTING	LEGEND-PROFILE	PROPOSED
300 LDS	LAND DRAINAGE SEWER	300 LDS	BACK OF CURB	CONCRETE				
250 WWS	WASTE WATER SEWER	250 WWS	ASPHALT					
	GAS		SIDEWALK					
	HYDRO		CURB RAMP					
	M.T.S.		PROPERTY LINE					
150 WM	WATERMAIN	150 WM	DETECTABLE WARNING TILES					
	HYDRANT		TEST HOLE					
	VALVE		GUY WIRE					
	MANHOLE		TREE					
	CATCH BASIN		SURVEY BAR					
	CURB INLET		GEODETTIC BENCHMARK					
	LIGHT STANDARD		ELEVATION					
	POLES							

**LOCATION APPROVED UNDERGROUND STRUCTURES**

SUPV. U/G STRUCTURES COMMITTEE DATE

NOTE:  
LOCATION OF UNDERGROUND STRUCTURES AS SHOWN ARE BASED ON THE BEST INFORMATION AVAILABLE BUT NO GUARANTEE IS GIVEN THAT ALL EXISTING UTILITIES ARE SHOWN OR THAT THE GIVEN LOCATIONS ARE EXACT. CONFIRMATION OF EXISTENCE AND EXACT LOCATION OF ALL SERVICES MUST BE OBTAINED FROM THE INDIVIDUAL UTILITIES BEFORE PROCEEDING WITH CONSTRUCTION.

B.M. KGS BASE ELEV. -

DWGS BASED ON C.S.R.S. NAD 83 SYSTEM, UTM GRID

DESIGNED BY SH

CHECKED BY P/14

DRAWN BY GEL

APPROVED BY

HOR. SCALE: 1:250

VERTICAL: 1:50

RELEASED FOR CONSTRUCTION:

11/08/02

11/07/13

**KGS GROUP**  
CONSULTING ENGINEERS

ENGINEER'S SEAL

HARMISH

CONSULTANT DRAWING NO. 10-0107-17\_C01