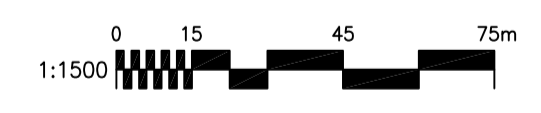


**WARNING**  
 IF POWER EQUIPMENT OR EXPLOSIVES ARE TO BE USED FOR EXCAVATION ON THIS PROJECT THE CONTRACTOR MUST:  
 1) NOTIFY THE GAS COMPANY OF THE PROPOSED LOCATION OF EXCAVATION.  
 2) TAKE PRECAUTION TO AVOID DAMAGE TO GAS COMPANY INSTALLATIONS.  
 SEE PROVINCIAL REGULATION 140/92 FOR DETAILS

**METRIC**  
 WHOLE NUMBERS INDICATE MILLIMETRES  
 DECIMALIZED NUMBERS INDICATE METRES



**APEGM**  
 Certificate of Authorization  
 Stantec Consulting Ltd.  
 No. 1301 Date: \_\_\_\_\_

84R635 - Lake Crest Rd. & Waverley St.,  
 Bolt on top of 0.05m dia. x 2.4m iron  
 pipe, 14.2m N. of S.L. of Lake Crest Rd.  
 & 0.6m E. of E.L. of Waverley St.

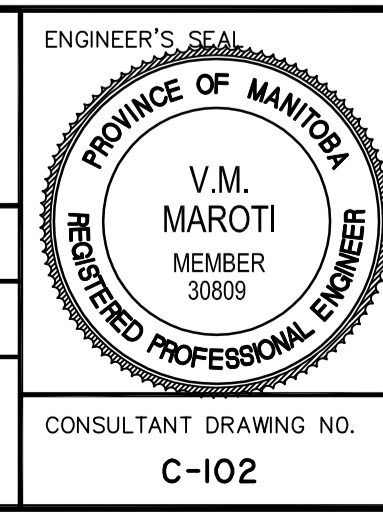
150 WM		300 LDS		250 WWS		150 WM		300 LDS		250 WWS	
WATERMAIN	HYDRANT	VALVE	LAND DRAINAGE SEWER	WASTE WATER SEWER	MANHOLE	CATCH BASIN	CURB INLET	JUNCTIONS	CULVERT	LEGEND-PLAN	PROPOSED
HYDRO M.T.S.	CONCRETE	ASPHALT	SIDEWALK	PROPERTY LINE	SURVEY BAR	GEODETIC BENCHMARK	DITCH	ELEVATION	SIDEWALK RAMP	LEGEND-PLAN	PROPOSED
WATERMAIN	HYDRANT, VALVE	LAND DRAINAGE SEWER	WASTE WATER SEWER	PROFILE	NORTH OR WEST GUTTER	SOUTH OR EAST GUTTER	NORTH OR WEST DITCH	SOUTH OR EAST DITCH	LEGEND-PROFILE	PROPOSED	EXISTING

**LOCATION APPROVED UNDERGROUND STRUCTURES**  
 SUPV. U/G STRUCTURES COMMITTEE DATE  
 NOTE:  
 LOCATION OF UNDERGROUND STRUCTURES AS SHOWN ARE BASED ON THE BEST INFORMATION AVAILABLE BUT NO GUARANTEE IS GIVEN THAT ALL EXISTING UTILITIES ARE SHOWN OR THAT THE GIVEN LOCATIONS ARE EXACT. CONFIRMATION OF EXISTENCE AND EXACT LOCATION OF ALL SERVICES MUST BE OBTAINED FROM THE INDIVIDUAL UTILITIES BEFORE PROCEEDING WITH CONSTRUCTION.

NO.	REVISIONS	DATE	BY
0	ISSUED FOR TENDER	11.07.15	V.M.M.

**Stantec Consulting Ltd.**  
 905 Waverley Street, Winnipeg, Manitoba  
 Tel 204-489-5900 Fax 204-453-9012

DESIGNED BY	V.M.M.	CHECKED BY	S.B.C.
DRAWN BY	T.G.	APPROVED BY	V.M.M.
HOR. SCALE:	1:1500	RELEASED FOR CONSTRUCTION:	
VERTICAL:		DATE	09.06.17



**THE CITY OF WINNIPEG**  
 PUBLIC WORKS DEPARTMENT  
 ENGINEERING DIVISION

**WWARP PART I**  
 KENASTON BOULEVARD EXTENSION - N.B. LANES  
 NORTH TOWN ROAD TO BISHOP GRANDIN BOULEVARD  
 SITE PLAN  
 EARTH WORKS/ROAD WORKS

SHEET 2 OF 65  
 CAD FILE DRAWING NUMBER 04840c-102-XXX.dwg  
 CITY DRAWING NUMBER P-3316-02

CONSULTANT DRAWING NO. C-102

V:\137\warp\113704840\warp\102\_design\warp\_102.dwg (04840c-102-xxx.dwg) 2010-03-15 09:54AM Dr: gpl