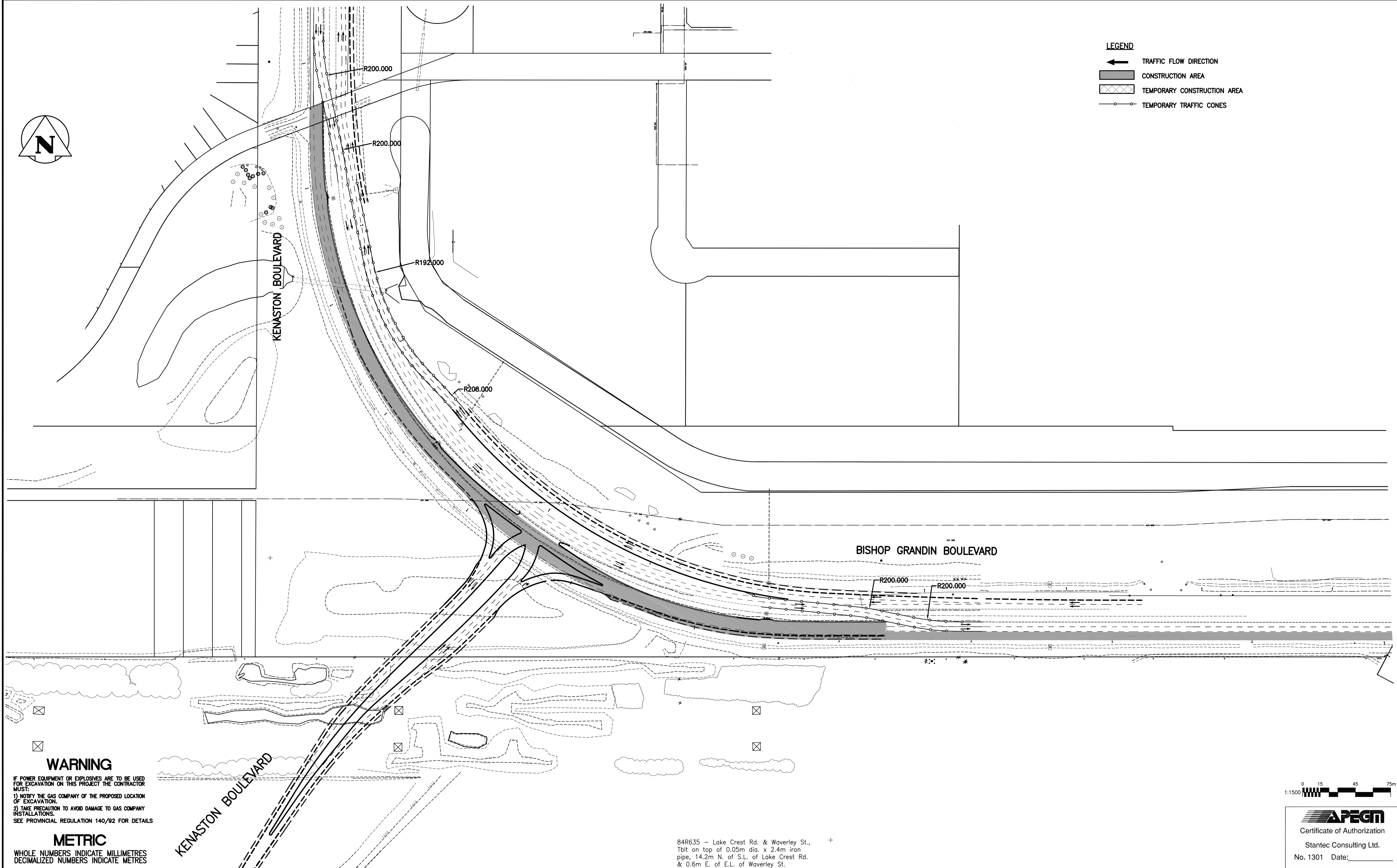


- LEGEND**
- ← TRAFFIC FLOW DIRECTION
 - ▨ CONSTRUCTION AREA
 - ▤ TEMPORARY CONSTRUCTION AREA
 - TEMPORARY TRAFFIC CONES

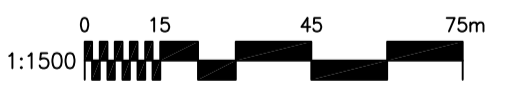


WARNING

IF POWER EQUIPMENT OR EXPLOSIVES ARE TO BE USED FOR EXCAVATION ON THIS PROJECT THE CONTRACTOR MUST:
 1) NOTIFY THE GAS COMPANY OF THE PROPOSED LOCATION OF EXCAVATION.
 2) TAKE PRECAUTION TO AVOID DAMAGE TO GAS COMPANY INSTALLATIONS.
 SEE PROVINCIAL REGULATION 140/92 FOR DETAILS

METRIC

WHOLE NUMBERS INDICATE MILLIMETRES
 DECIMALIZED NUMBERS INDICATE METRES



Certificate of Authorization
 Stantec Consulting Ltd.
 No. 1301 Date: _____

84R635 - Lake Crest Rd. & Waverley St.,
 Tblt on top of 0.05m dia. x 2.4m iron pipe, 14.2m N. of S.L. of Lake Crest Rd. & 0.6m E. of E.L. of Waverley St.

150 WM	WATERMAIN	150 WM	HYDRO	150 WM	WATERMAIN	150 WM
○	HYDRANT	+	M.T.S.	+	HYDRANT, VALVE	+
○	VALVE	○	CONCRETE	▨	LAND DRAINAGE SEWER	300 LDS
300 LDS	LAND DRAINAGE SEWER	300 LDS	ASPHALT	▨	WASTE WATER SEWER	250 WWS
250 WWS	WASTE WATER SEWER	250 WWS	SIDEWALK	▨	PROFILE	○
○	MANHOLE	○	PROPERTY LINE	○	NORTH OR WEST GUTTER	○
□	CATCH BASIN	+	SURVEY BAR	○	SOUTH OR EAST GUTTER	○
▽	CURB INLET	+	GEODETIC BENCHMARK	○	NORTH OR WEST DITCH	○
+	JUNCTIONS	→	DITCH	○	SOUTH OR EAST DITCH	○
▨	CULVERT	(31.334)	ELEVATION	(32.233)	NORTH OR WEST DITCH	△
▨	GAS	▨	SIDEWALK RAMP	▨	SOUTH OR EAST DITCH	▽
▨	EXISTING	▨	LEGEND-PLAN	▨	LEGEND-PROFILE	▨
▨	LEGEND-PLAN	▨	PROPOSED	▨	PROPOSED	▨

LOCATION APPROVED UNDERGROUND STRUCTURES

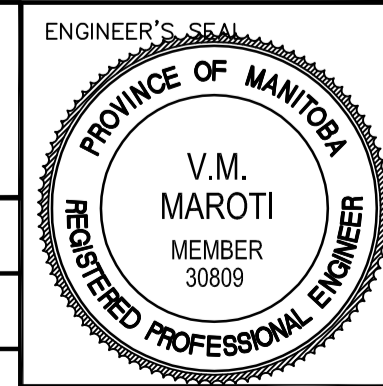
SUPV. U/G STRUCTURES COMMITTEE DATE

NOTE:
 LOCATION OF UNDERGROUND STRUCTURES AS SHOWN ARE BASED ON THE BEST INFORMATION AVAILABLE BUT NO GUARANTEE IS GIVEN THAT ALL EXISTING UTILITIES ARE SHOWN OR THAT THE GIVEN LOCATIONS ARE EXACT. CONFIRMATION OF EXISTENCE AND EXACT LOCATION OF ALL SERVICES MUST BE OBTAINED FROM THE INDIVIDUAL UTILITIES BEFORE PROCEEDING WITH CONSTRUCTION.

B.M. 84R635	ELEV. 232.457m		
0	ISSUED FOR TENDER	11.07.15	V.M.M.
NO.	REVISIONS	DATE	BY

Stantec Consulting Ltd.
 905 Waverley Street, Winnipeg, Manitoba
 Tel 204-489-5900 Fax 204-453-9012

DESIGNED BY	R.P.K., S.R.S.	CHECKED BY	V.M.M.
DRAWN BY	T.G.	APPROVED BY	
HOR. SCALE:	1:1500	RELEASED FOR CONSTRUCTION:	
VERTICAL:		DATE	



THE CITY OF WINNIPEG
 PUBLIC WORKS DEPARTMENT
 ENGINEERING DIVISION

WWARP PART I
 KENASTON BOULEVARD EXTENSION - N.B. LANES
 NORTH TOWN ROAD TO BISHOP GRANDIN BOULEVARD
 SITE PLAN
 CONSTRUCTION PHASING - PHASE 3

SHEET	10	OF	65
CAD FILE DRAWING NUMBER	04840c-132-XXX.dwg		
CITY DRAWING NUMBER	P-3316-10		