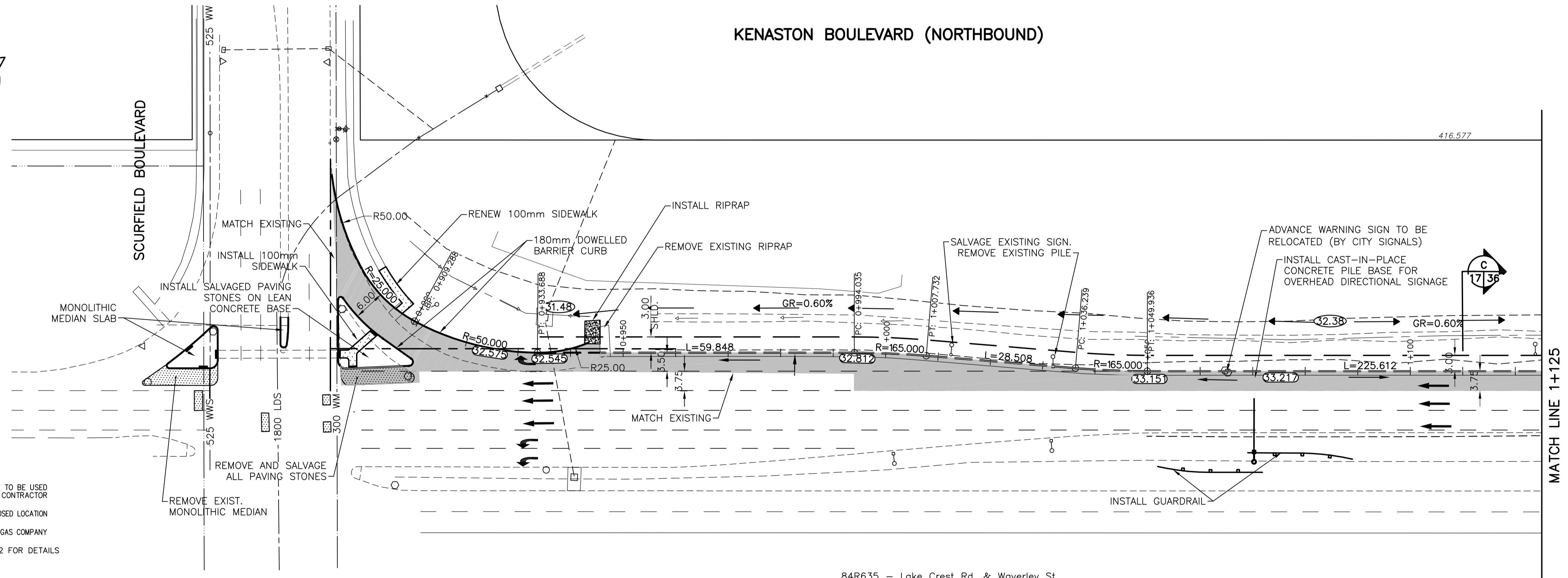


KENASTON BOULEVARD (NORTHBOUND)



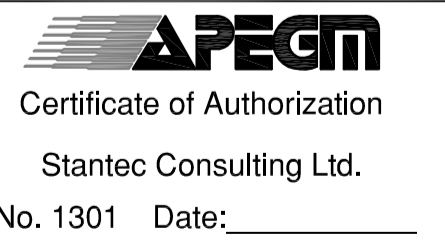
WARNING

IF POWER EQUIPMENT OR EXPLOSIVES ARE TO BE USED FOR EXCAVATION ON THIS PROJECT THE CONTRACTOR MUST:
 1) NOTIFY THE GAS COMPANY OF THE PROPOSED LOCATION OF EXCAVATION.
 2) TAKE PRECAUTION TO AVOID DAMAGE TO GAS COMPANY INSTALLATIONS.
 SEE PROVINCIAL REGULATION 140/92 FOR DETAILS

METRIC

WHOLE NUMBERS INDICATE MILLIMETRES
 DECIMALIZED NUMBERS INDICATE METRES

B.M. 84R635
 ELEV. 232.457m
 84R635 - Lake Crest Rd. & Waverley St.,
 Tilt on top of 0.05m dia. x 2.4m iron
 pipe, 14.2m N. of S.L. of Lake Crest Rd.
 & 0.6m E. of E.L. of Waverley St.



150 WM	WATERMAIN	150 WM	HYDRO	150 WM	WATERMAIN	150 WM
HYDRANT	HYDRANT	M.T.S.	CONCRETE	300 LDS	LAND DRAINAGE SEWER	300 LDS
VALVE	VALVE	CONCRETE	ASPHALT	250 WWS	WASTE WATER SEWER	250 WWS
300 LDS	LAND DRAINAGE SEWER	300 LDS	SIDEWALK	PROPERTY LINE	NORTH OR WEST GUTTER	
250 WWS	WASTE WATER SEWER	250 WWS	MANHOLE	SURVEY BAR	SOUTH OR EAST GUTTER	
CATCH BASIN			CURB INLET	GEODETIC BENCHMARK	NORTH OR WEST P	
JUNCTIONS			CULVERT	DITCH	SOUTH OR EAST P	
GAS				ELEVATION	NORTH OR WEST DITCH	
				SIDEWALK RAMP	SOUTH OR EAST DITCH	
EXISTING	LEGEND-PLAN	PROPOSED	EXISTING	LEGEND-PLAN	PROPOSED	EXISTING

LOCATION APPROVED UNDERGROUND STRUCTURES

SUPV. U/G STRUCTURES COMMITTEE DATE

NOTE:
 LOCATION OF UNDERGROUND STRUCTURES AS SHOWN ARE BASED ON THE BEST INFORMATION AVAILABLE BUT NO GUARANTEE IS GIVEN THAT ALL EXISTING UTILITIES ARE SHOWN OR THAT THE GIVEN LOCATIONS ARE EXACT. CONFIRMATION OF EXISTENCE AND EXACT LOCATION OF ALL SERVICES MUST BE OBTAINED FROM THE INDIVIDUAL UTILITIES BEFORE PROCEEDING WITH CONSTRUCTION.

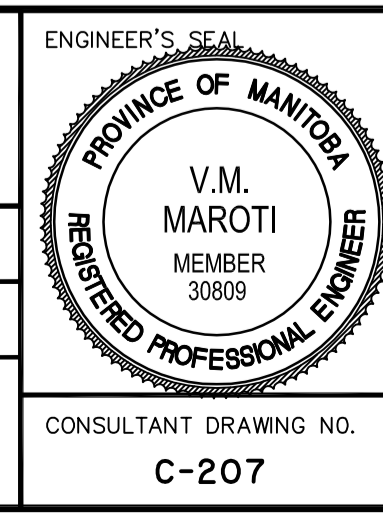
0	ISSUED FOR TENDER	11.07.15	V.M.M.
NO.	REVISIONS	DATE	BY
		09.09.10	

Stantec Consulting Ltd.
 905 Waverley Street, Winnipeg, Manitoba
 Tel 204-489-5900 Fax 204-453-9012

DESIGNED BY: V.M.M. CHECKED BY: S.B.C.
 DRAWN BY: T.G. APPROVED BY: V.M.M.

HOR. SCALE: 1:500
 VERTICAL: 1:20

RELEASED FOR CONSTRUCTION: DATE



THE CITY OF WINNIPEG
 PUBLIC WORKS DEPARTMENT
 ENGINEERING DIVISION

WWARP PART I
 KENASTON BOULEVARD EXTENSION - N.B. LANES
 NORTH TOWN ROAD TO BISHOP GRANDIN BOULEVARD
 HORIZONTAL & VERTICAL ALIGNMENT - A2
 KENASTON BLVD. NB - STA 0+875 TO STA 1+125

SHEET 17 OF 65
 CAD FILE DRAWING NUMBER 04840c-207-a2.dwg
 CITY DRAWING NUMBER P-3316-17