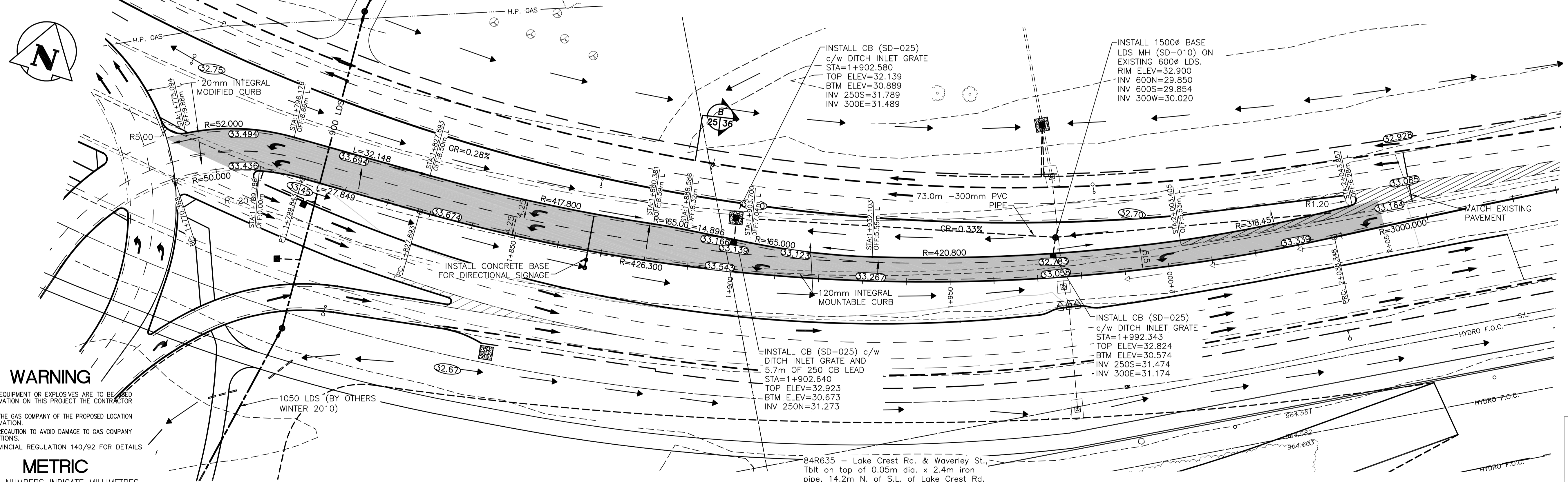


BISHOP GRANDIN BOULEVARD TO KENASTON BOULEVARD (SOUTHBOUND)



WARNING
 IF POWER EQUIPMENT OR EXPLOSIVES ARE TO BE USED FOR EXCAVATION ON THIS PROJECT THE CONTRACTOR MUST:
 1) NOTIFY THE GAS COMPANY OF THE PROPOSED LOCATION OF EXCAVATION.
 2) TAKE PRECAUTION TO AVOID DAMAGE TO GAS COMPANY INSTALLATIONS.
 SEE PROVINCIAL REGULATION 140/92 FOR DETAILS

METRIC
 WHOLE NUMBERS INDICATE MILLIMETRES
 DECIMALIZED NUMBERS INDICATE METRES

LOCATION APPROVED UNDERGROUND STRUCTURES

150 WWS	150 WM	150 W	150 WWS	150 WM	150 W
HYDRANT	HYDRANT VALVE	CONCRETE	LAND DRAINAGE SEWER	LAND DRAINAGE SEWER	LAND DRAINAGE SEWER
VALVE	CONCRETE	ASPHALT	WASTE WATER SEWER	WASTE WATER SEWER	WASTE WATER SEWER
LAND DRAINAGE SEWER	ASPHALT	SIDEWALK	PROPERTY LINE	NORTH OR WEST GUTTER	NORTH OR WEST GUTTER
WASTE WATER SEWER	SIDEWALK	MANHOLE	SURVEY BAR	SOUTH OR EAST GUTTER	SOUTH OR EAST GUTTER
CATCH BASIN	MANHOLE	CATCH BASIN	GEODETIC BENCHMARK	NORTH OR WEST DITCH	NORTH OR WEST DITCH
CURB INLET	CATCH BASIN	CURB INLET	DITCH	SOUTH OR WEST DITCH	SOUTH OR WEST DITCH
JUNCTIONS	CULVERT	JUNCTIONS	ELEVATION	SOUTH OR EAST DITCH	SOUTH OR EAST DITCH
CULVERT	GAS	CULVERT	SIDEWALK RAMP		
GAS	LEGEND-PLAN	PROPOSED	LEGEND-PLAN	PROPOSED	EXISTING
EXISTING	LEGEND-PLAN	PROPOSED	LEGEND-PROFILE	PROPOSED	EXISTING

84R635 - Lake Crest Rd. & Waverley St.
 Tbt on top of 0.05m dia. x 2.4m iron pipe, 14.2m N. of S.L. of Lake Crest Rd. & 0.6m E. of E.L. of Waverley St.

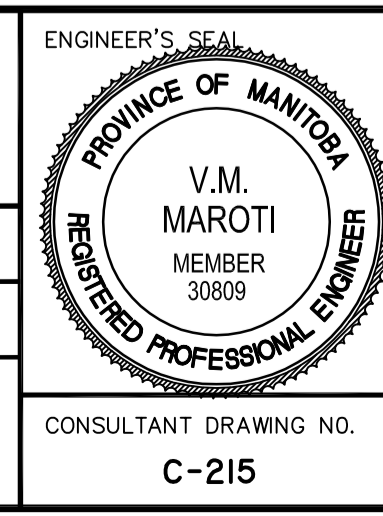
84R635
 ELEV. 232.457m

Stantec Consulting Ltd.
 905 Waverley Street, Winnipeg, Manitoba
 Tel 204-489-5900 Fax 204-453-9012

DESIGNED BY: V.M.M. CHECKED BY: S.B.C.
 DRAWN BY: T.G. APPROVED BY: V.M.M.

HOR. SCALE: 1:500
 VERTICAL: 1:20

ISSUED FOR TENDER: 11.07.15
 REVISIONS: 0



THE CITY OF WINNIPEG
 PUBLIC WORKS DEPARTMENT
 ENGINEERING DIVISION

WWARP PART I
 KENASTON BOULEVARD EXTENSION - N.B. LANES
 NORTH TOWN ROAD TO BISHOP GRANDIN BOULEVARD
 HORIZONTAL & VERTICAL ALIGNMENT - A6
 BISHOP GRANDIN/KENASTON BLVD. STA 1+779 TO STA 2+059

SHEET 25 OF 65
 CAD FILE DRAWING NUMBER 04840c-221-a6.dwg
 CITY DRAWING NUMBER P-3316-25

V:\137\warp\13704840\warp\02_design\warp_02.dwg
 2010-03-15 10:20:44 AM
 13704840-221-a6.dwg