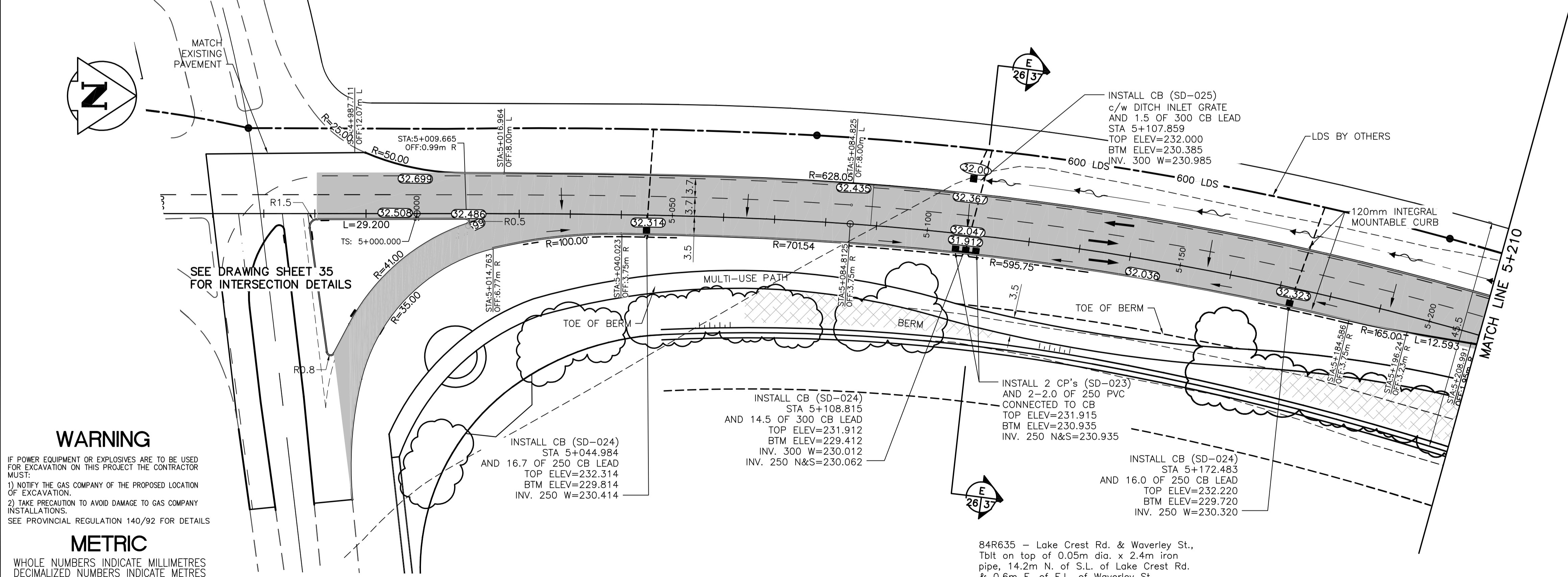


SOUTH KENASTON BOULEVARD – (NORTHBOUND & SOUTHBOUND)



- CONSTRUCTION NOTES:**
1. EACH CATCH BASIN (CB) AND CATCH PIT (CP) INSTALLED IN PAVEMENT TO HAVE AP-004 FRAME AND AP-005 COVER.
 2. EACH DITCH INLET CATCH BASIN TO HAVE A DITCH INLET GRATE AS PER DWG. XXX.
 3. CONTRACTOR TO EXPOSE AND VERIFY INVERTS OF ALL JUNCTIONS OR CONNECTIONS TO RISERS AT MAINLINE LDS (BY OTHERS) PRIOR TO INSTALLATION OF CATCH BASINS.
 4. CLASS 3 BACKFILL TO BE USED WITHIN 1.0m OF PAVEMENT FOR ALL UNDERGROUND INSTALLATIONS.

WARNING
 IF POWER EQUIPMENT OR EXPLOSIVES ARE TO BE USED FOR EXCAVATION ON THIS PROJECT THE CONTRACTOR MUST:
 1) NOTIFY THE GAS COMPANY OF THE PROPOSED LOCATION OF EXCAVATION.
 2) TAKE PRECAUTION TO AVOID DAMAGE TO GAS COMPANY INSTALLATIONS.
 SEE PROVINCIAL REGULATION 140/92 FOR DETAILS

METRIC
 WHOLE NUMBERS INDICATE MILLIMETRES
 DECIMALIZED NUMBERS INDICATE METRES

EXISTING	LEGEND-PLAN	PROPOSED	EXISTING	LEGEND-PLAN	PROPOSED	EXISTING	LEGEND-PROFILE	PROPOSED
150 WM	WATERMAIN	150 WM	HYDRO	M.T.S.	150 WM	WATERMAIN	150 WM	HYDRANT, VALVE
300 LDS	LAND DRAINAGE SEWER	300 LDS	CONCRETE	ASPHALT	250 WWS	WASTE WATER SEWER	250 WWS	LAND DRAINAGE SEWER
250 WWS	WASTE WATER SEWER	250 WWS	SIDEWALK	PROPERTY LINE	300 LDS	WASTE WATER SEWER	250 WWS	WASTE WATER SEWER
MANHOLE	MANHOLE	MANHOLE	PROPERTY LINE	SURVEY BAR	300 LDS	WASTE WATER SEWER	250 WWS	LAND DRAINAGE SEWER
CATCH BASIN	CATCH BASIN	CATCH BASIN	GEODETIC BENCHMARK	DITCH	300 LDS	WASTE WATER SEWER	250 WWS	LAND DRAINAGE SEWER
CURB INLET	CURB INLET	CURB INLET	ELEVATION	SIDEWALK RAMP	300 LDS	WASTE WATER SEWER	250 WWS	LAND DRAINAGE SEWER
JUNCTIONS	JUNCTIONS	JUNCTIONS	SIDEWALK RAMP	LEGEND-PLAN	300 LDS	WASTE WATER SEWER	250 WWS	LAND DRAINAGE SEWER
CULVERT	CULVERT	CULVERT	LEGEND-PROFILE	PROPOSED	300 LDS	WASTE WATER SEWER	250 WWS	LAND DRAINAGE SEWER
GAS	GAS	GAS	PROPOSED	EXISTING	300 LDS	WASTE WATER SEWER	250 WWS	LAND DRAINAGE SEWER

LOCATION APPROVED UNDERGROUND STRUCTURES
 SUPV. U/G STRUCTURES COMMITTEE DATE
 NOTE:
 LOCATION OF UNDERGROUND STRUCTURES AS SHOWN ARE BASED ON THE BEST INFORMATION AVAILABLE BUT NO GUARANTEE IS GIVEN THAT ALL EXISTING UTILITIES ARE SHOWN OR THAT THE GIVEN LOCATIONS ARE EXACT. CONFIRMATION OF EXISTENCE AND EXACT LOCATION OF ALL SERVICES MUST BE OBTAINED FROM THE INDIVIDUAL UTILITIES BEFORE PROCEEDING WITH CONSTRUCTION.

NO.	REVISIONS	DATE	BY
0	ISSUED FOR TENDER	11.07.15	V.M.M.

Stantec Consulting Ltd.
 905 Waverley Street, Winnipeg, Manitoba
 Tel 204-489-5900 Fax 204-453-9012

DESIGNED BY: S.R.S. CHECKED BY: S.B.C.
 DRAWN BY: T.G. APPROVED BY: V.M.M.

HOR. SCALE: 1:500
 VERTICAL: 1:20

RELEASED FOR CONSTRUCTION: DATE

ENGINEER'S SEAL
 PROVINCE OF MANITOBA
 REGISTERED PROFESSIONAL ENGINEER
 V.M. MAROTI
 MEMBER 30809

THE CITY OF WINNIPEG
 PUBLIC WORKS DEPARTMENT
 ENGINEERING DIVISION

WWARP PART I
 KENASTON BOULEVARD EXTENSION - N.B. LANES
 NORTH TOWN ROAD TO BISHOP GRANDIN BOULEVARD
 HORIZONTAL & VERTICAL ALIGNMENT - A4
 KENASTON BLVD. NB/SB STA 4+975 TO STA 5+210

SHEET 26 OF 65
 CAD FILE DRAWING NUMBER 04840c-222-a4.dwg
 CITY DRAWING NUMBER P-3316-26

APEGM
 Certificate of Authorization
 Stantec Consulting Ltd.
 No. 1301 Date: _____

V:\1\1301\2022\13012022.dwg (Drawing) 10/22/2022 10:00:00 AM By: [redacted]