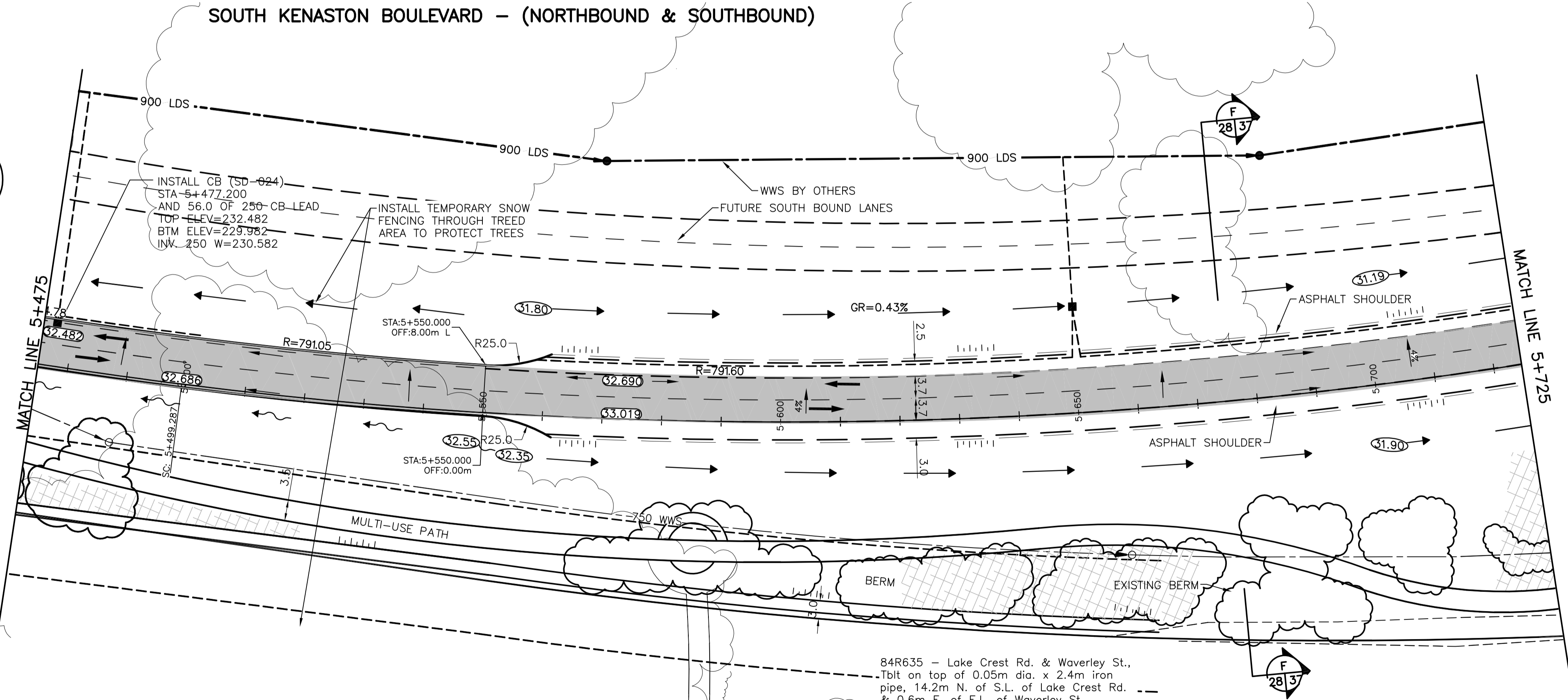
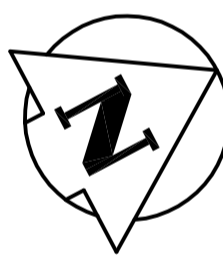


**SOUTH KENASTON BOULEVARD - (NORTHBOUND & SOUTHBOUND)**



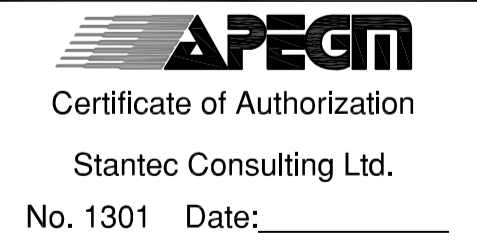
**WARNING**

IF POWER EQUIPMENT OR EXPLOSIVES ARE TO BE USED FOR EXCAVATION ON THIS PROJECT THE CONTRACTOR MUST:  
 1) NOTIFY THE GAS COMPANY OF THE PROPOSED LOCATION OF EXCAVATION.  
 2) TAKE PRECAUTION TO AVOID DAMAGE TO GAS COMPANY INSTALLATIONS.  
 SEE PROVINCIAL REGULATION 140/92 FOR DETAILS

**METRIC**

WHOLE NUMBERS INDICATE MILLIMETRES  
 DECIMALIZED NUMBERS INDICATE METRES

84R635 - Lake Crest Rd. & Waverley St.,  
 -Tilt on top of 0.05m dia. x 2.4m iron pipe, 14.2m N. of S.L. of Lake Crest Rd. -- & 0.6m E. of E.L. of Waverley St.



150 WM	WATERMAIN	150 WM	HYDRO	150 WM	WATERMAIN	150 WM
+	HYDRANT	+	M.T.S.	+	HYDRANT, VALVE	+
+	VALVE	+	CONCRETE	+	LAND DRAINAGE SEWER	+
300 LDS	LAND DRAINAGE SEWER	300 LDS	ASPHALT	250 WWS	WASTE WATER SEWER	250 WWS
250 WWS	WASTE WATER SEWER	250 WWS	SIDEWALK	X	C PROFILE	
○	MANHOLE	●	PROPERTY LINE	□	NORTH OR WEST GUTTER	
□	CATCH BASIN	⊕	SURVEY BAR	○	SOUTH OR EAST GUTTER	
▽	CURB INLET	⊙	GEODETIC BENCHMARK	◇	NORTH OR WEST DITCH	
+	JUNCTIONS	+	DITCH	◇	SOUTH OR EAST DITCH	
+	CULVERT	(31.334)	ELEVATION	△	NORTH OR WEST DITCH	
+	GAS		SIDEWALK RAMP	▽	SOUTH OR EAST DITCH	
---	EXISTING	---	LEGEND-PLAN	---	LEGEND-PROFILE	---
---	PROPOSED	---	EXISTING	---	PROPOSED	---

**LOCATION APPROVED UNDERGROUND STRUCTURES**

SUPV. U/G STRUCTURES COMMITTEE DATE

NOTE:  
 LOCATION OF UNDERGROUND STRUCTURES AS SHOWN ARE BASED ON THE BEST INFORMATION AVAILABLE BUT NO GUARANTEE IS GIVEN THAT ALL EXISTING UTILITIES ARE SHOWN OR THAT THE GIVEN LOCATIONS ARE EXACT. CONFIRMATION OF EXISTENCE AND EXACT LOCATION OF ALL SERVICES MUST BE OBTAINED FROM THE INDIVIDUAL UTILITIES BEFORE PROCEEDING WITH CONSTRUCTION.

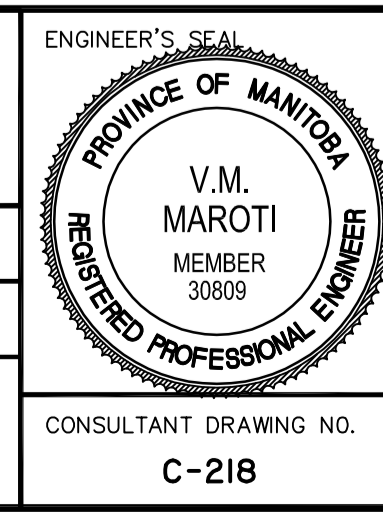
B.M. 84R635	ELEV. 232.457m		
0	ISSUED FOR TENDER	11.07.15	V.M.M.
NO. REVISIONS	DATE	BY	DATE

**Stantec Consulting Ltd.**  
 905 Waverley Street, Winnipeg, Manitoba  
 Tel 204-489-5900 Fax 204-453-9012

DESIGNED BY: V.M.M. CHECKED BY: S.B.C.  
 DRAWN BY: T.G. APPROVED BY: V.M.M.

HOR. SCALE: 1:500  
 VERTICAL: 1:20

RELEASED FOR CONSTRUCTION: DATE



**THE CITY OF WINNIPEG**

**WWARP PART I**  
 KENASTON BOULEVARD EXTENSION - N.B. LANES  
 NORTH TOWN ROAD TO BISHOP GRANDIN BOULEVARD  
 HORIZONTAL & VERTICAL ALIGNMENT - A4  
 KENASTON BLVD. S - STA 5+475 TO STA 5+725

SHEET 28 OF 65  
 CAD FILE DRAWING NUMBER 04840c-222-a4.dwg  
 CITY DRAWING NUMBER P-3316-28

CONSULTANT DRAWING NO. C-218

X:\137\office\13704840\wwarp\02\_design\sheet\_dwg\04840c-222-a4.dwg 2010-03-15 11:33AM By: jst