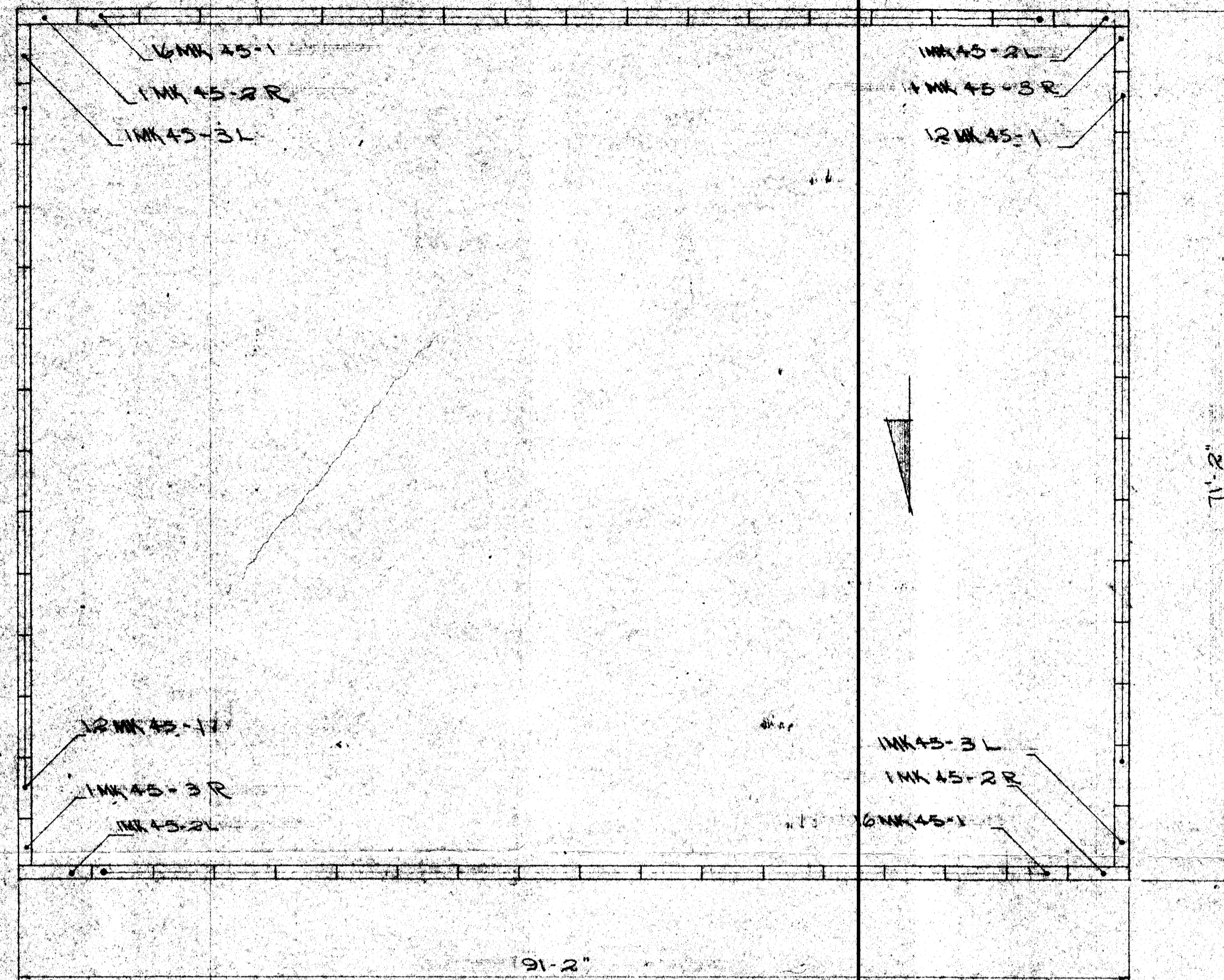
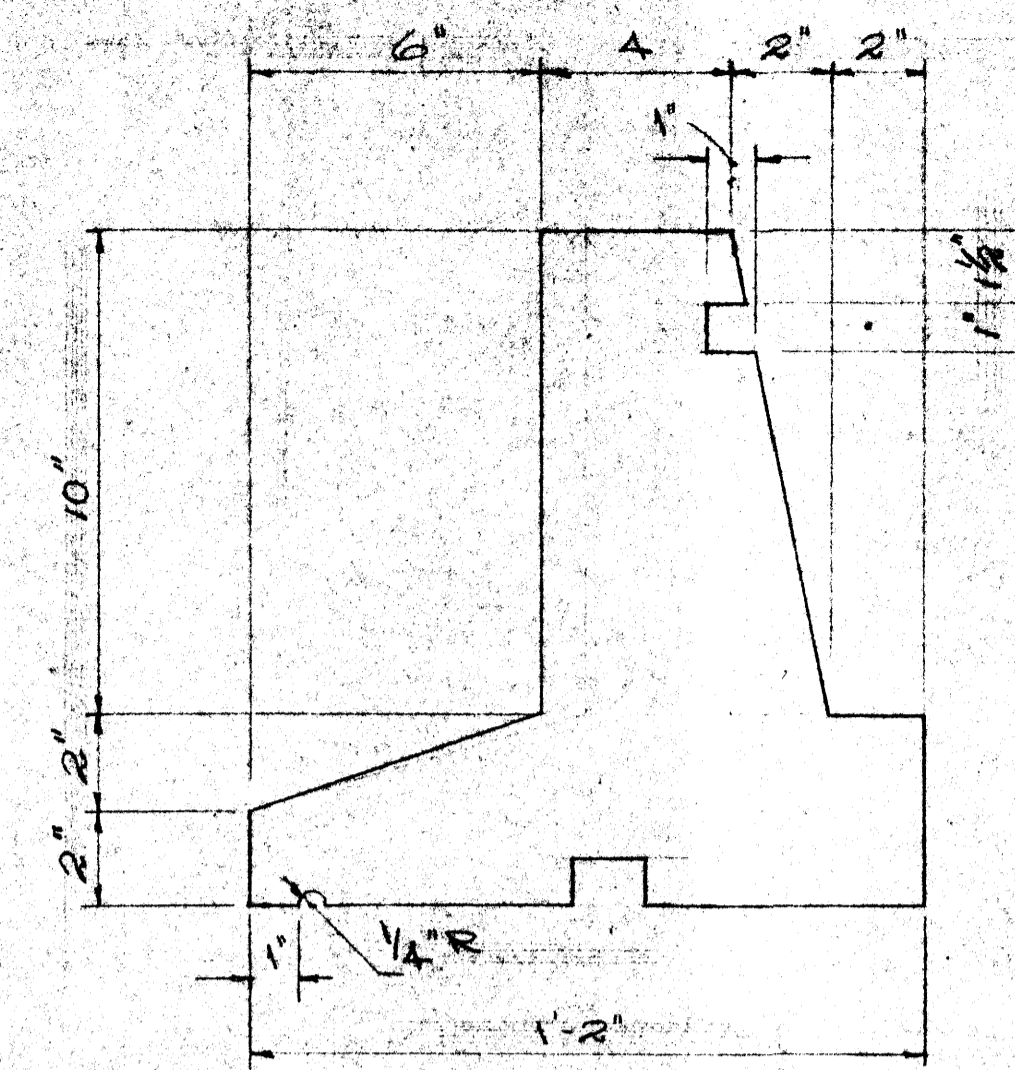


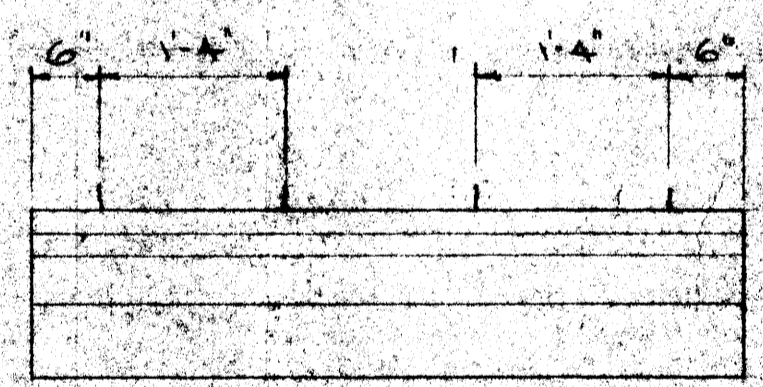
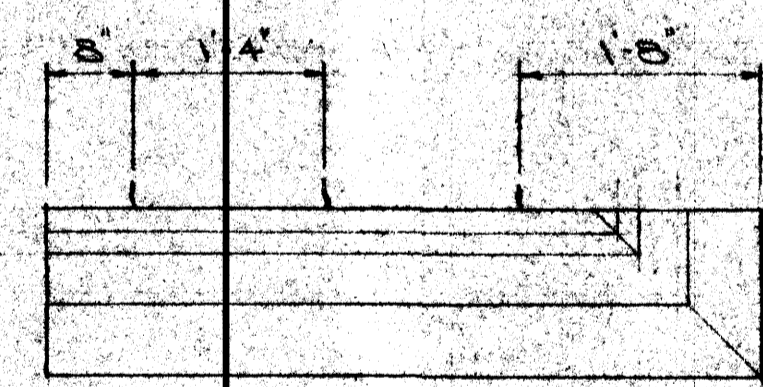
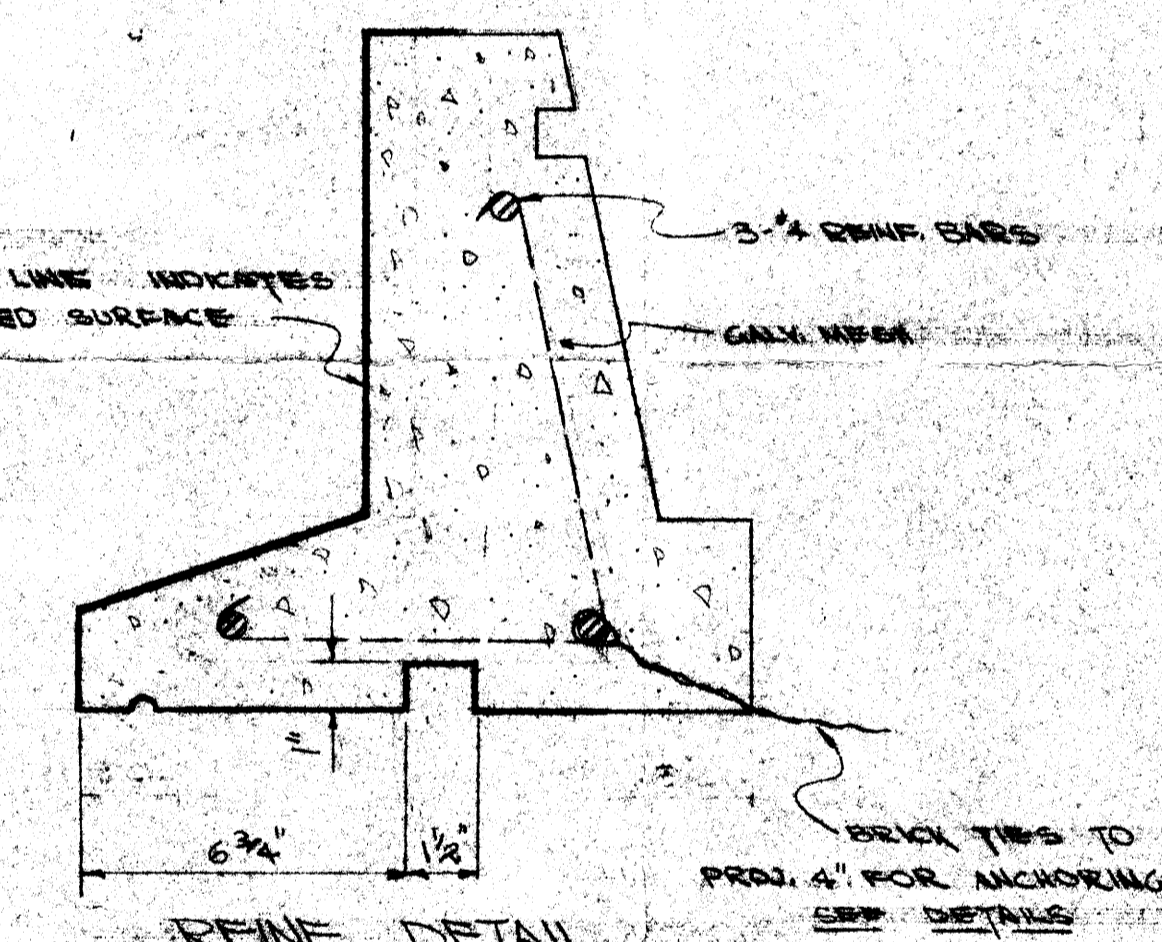
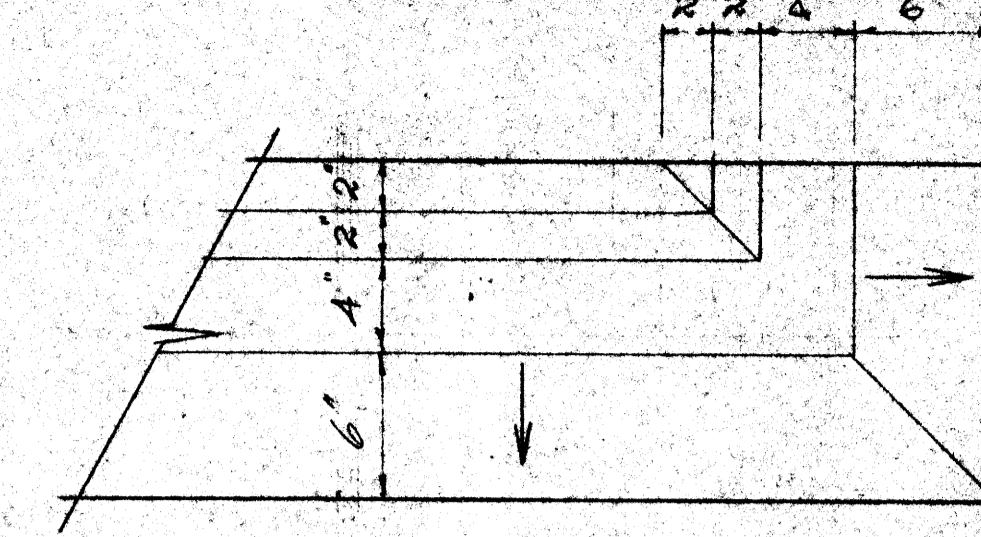
DATE Mar 22/60  
Approval of this drawing covers only the design and arrangement of material and equipment and does not in any way relieve the Contractor of any liability or responsibility.



COPING LAYOUT  
SCALE 1/8" = 1'-0"



COPING DETAIL  
SCALE 3/4" = 1'-0"



MISC. MATERIALS:			
REIN. STEEL	STOCK		
	ORD'D		
		WHITE LIME STONE AGGREGATE	
		WITH 100% WHITE MEDUSA # 40	
		GREY PORTLAND CEMENT	
FINISH:		SMOOTH	
LT. WT. CONCRETE			
STD. CONCRETE		3155 P.C.I. 0.25 DAYS	
PRODUCTION NOTES (READ UP)		REMARKS	

1	INSPECTION	14	8	60
1	PROV. ENG.	14	8	60
2	ERECTION DEPT.	14	8	60
1	SHIPPING DEPT.	14	8	60
X	FINAL APPR. DWGS.			
	PRELIMINARY DWGS. TO BE USED FOR PLANNING AND MOLD PREP. ONLY			
4	PRODUCTION DEPT.	14	8	60
3	ARCH. & CONT. RECORD			
3	ARCHITECTS APPROVAL			
No.	ISSUED FOR			

BLUE PRINT RECORD (READ UP)			

RECEIVED  
MAR 22 1960  
CLAYDON LIMITED

MARK	NO.	LENGTH	CONC. VOL.	WT./PC	TOTAL WT.	REMARKS
45-1	2	4'-11 3/4"	3.45	517.5	28980	
45-2R	2	6'-0 3/4"	4.2	630	1260	
45-2R	2	5'-0 3/4"	3.5	525	1050	
45-3L	2	4'-10 3/4"	3.4	510	1020	
45-3R	2	3'-10 3/4"	2.7	405	810	

9/15/60	AS PER ARCH. APPROVAL		
DATE	NO.	REMARKS	BY
1 REVISIONS (READ UP)			
SUPERCRETE LTD.			
700 ST. JOSEPH ST.		ST. BONIFACE, MANITOBA	
PREPARED BY: CLAYDON LIMITED			
LAYOUT, DETAILING & ESTIMATING			
VALUES, INC. PUMPING STATION			
MANITOBA			
ARCHITECT: GERRIT, CARTER, GERRIT & GERRIT			
CONTRACTOR: CLAYDON LIMITED			
SCALE: 1/8" = 1'-0"			
DATE: MAR 22 1960			
DRAWN BY: J. W. D. S.			
CHECKED BY: J. W. D. S.			
APPROVED BY: J. W. D. S.			