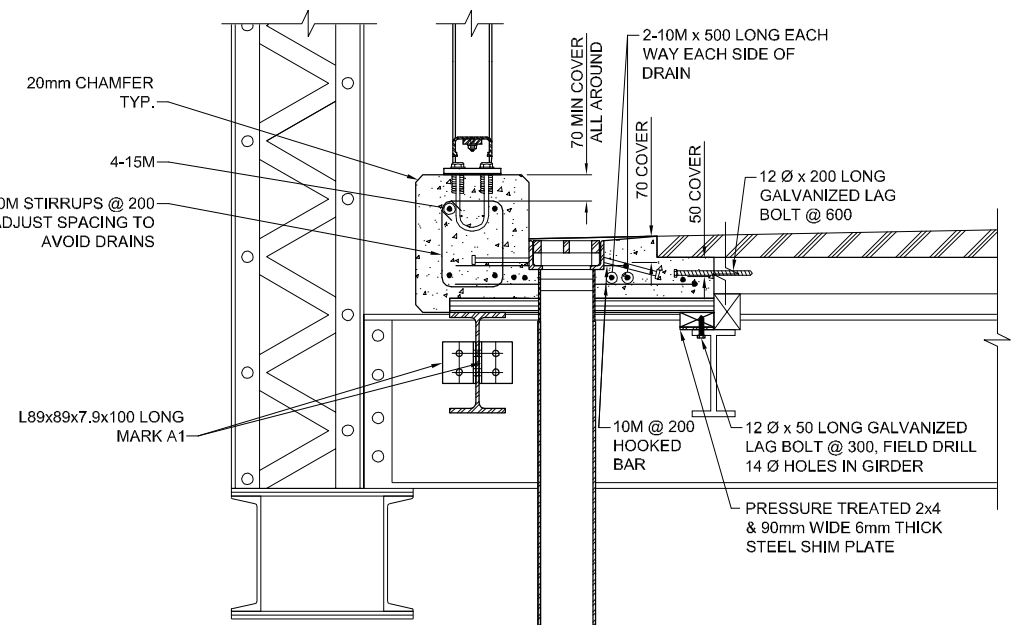
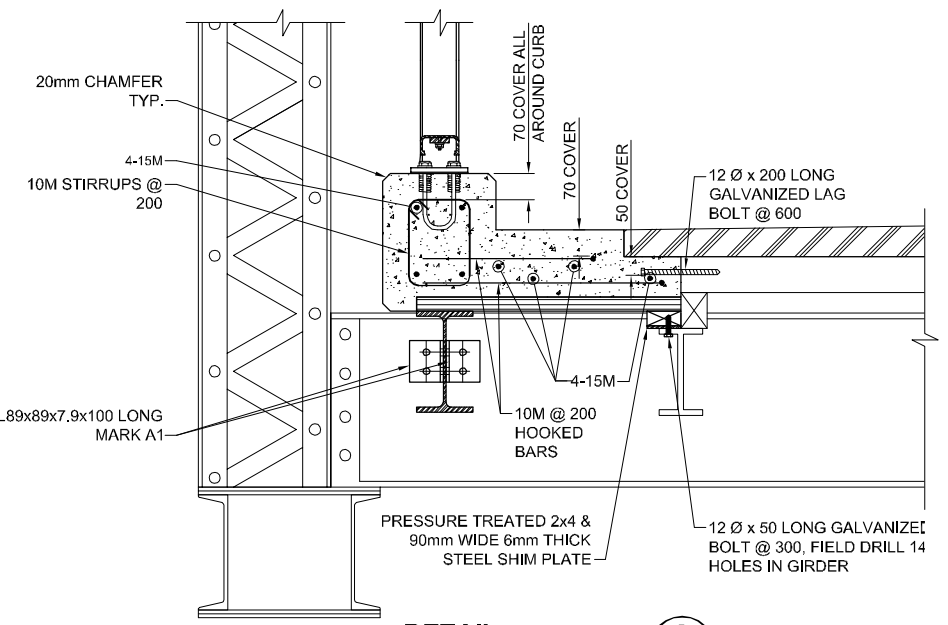


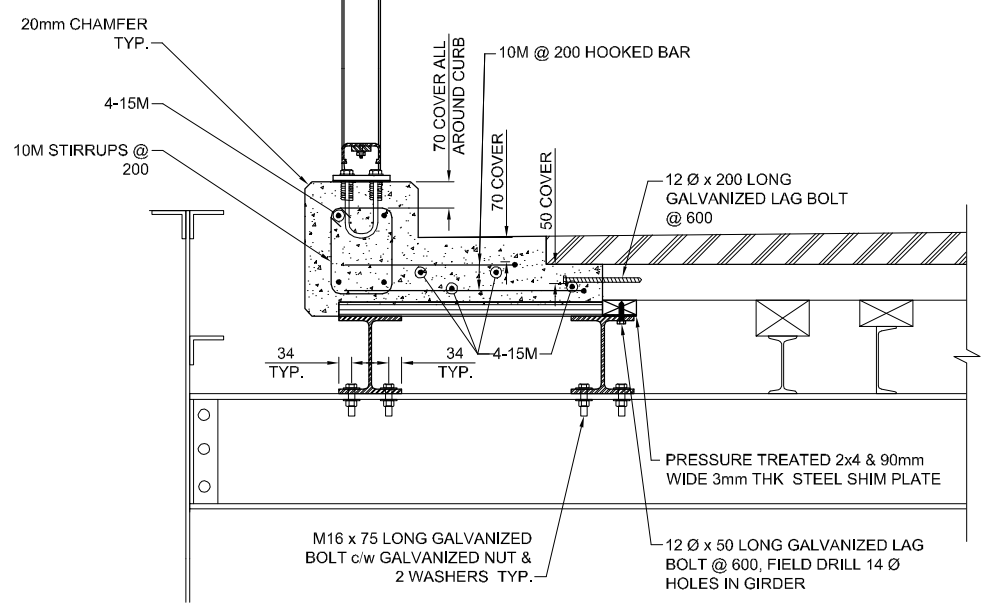
DETAIL 1
SCALE 1:10



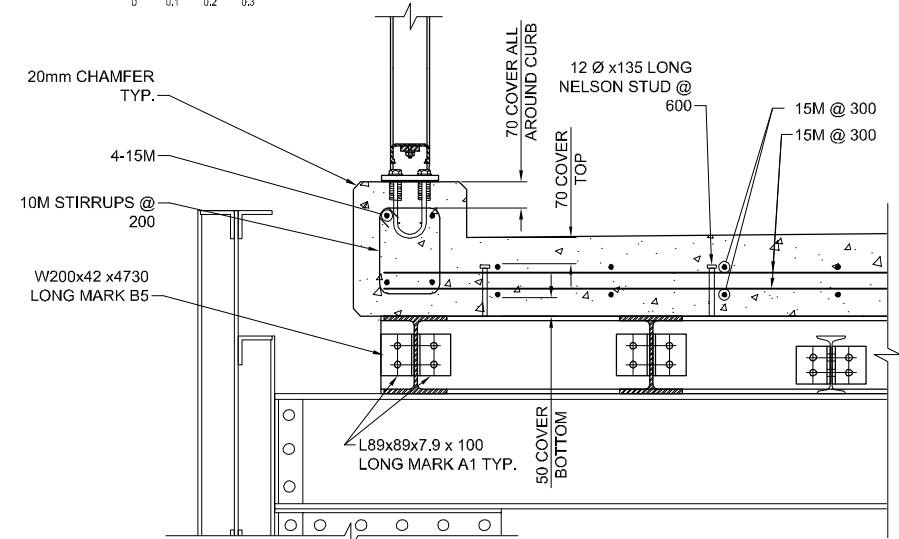
DETAIL 2
SCALE 1:10



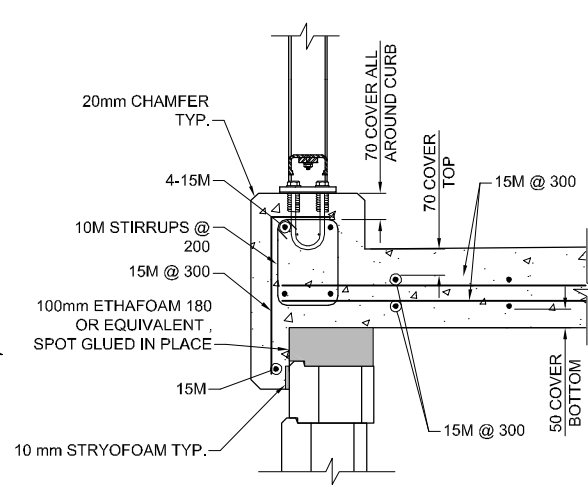
DETAIL 3
SCALE 1:10



DETAIL 4
SCALE 1:10

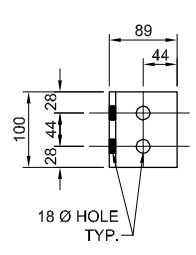


DETAIL 5
SCALE 1:10

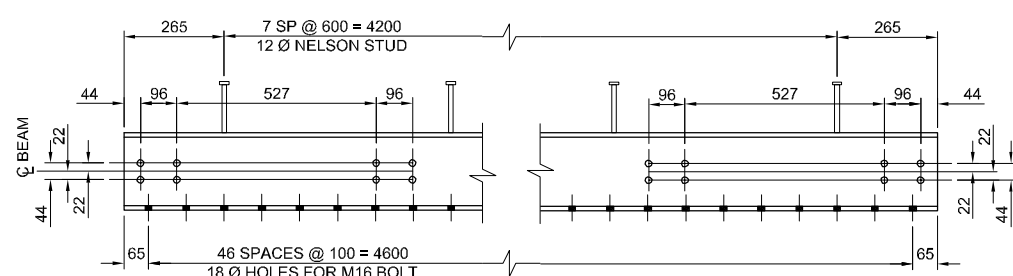


DETAIL 6
SCALE 1:10

- NOTES:**
- CONTRACT ADMINISTRATION TO INSPECT CONDITION OF EXISTING U-BOLT ANCHORS AFTER EXISTING CURB REMOVAL AND PRIOR TO NEW CONCRETE CURB CONSTRUCTION.
 - VOID FORM SHALL BE COMPRESSIBLE EXPANDED POLYSTYRENE PRODUCT WITH A MAXIMUM COMPRESSIVE STRENGTH OF 50 kPa AT 25% DEFORMATION SUCH AS ETHAFOAM 180 OR APPROVED EQUIVALENT.
 - DECK PAN SHALL BE FASTENED TO STEEL STRINGERS WITH HILTI X-ENP19 L15 FASTENERS OR APPROVED EQUIVALENT. INSTALL ACCORDING TO MANUFACTURERS INSTRUCTIONS. PROVIDE TWO ROWS OF FASTENERS AT 300 mm ON CENTER OVER EACH STRINGER.



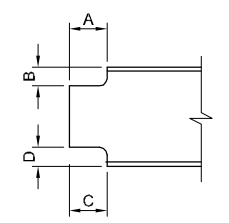
ANGLE MK A1
SCALE 1:5



BEAM B7
SCALE 1:10

BEAM TABLE									
BEAM MARK	QTY	SIZE	LENGTH	COPING				END	LOCATION
				A	B	C	D		
B1	20	W250x45	6885	100	40	0	0	BOTH	SPAN 2 & 3 OTHER THAN PIERS
B2	4	W250x45	7100**	100	40	0	0	ONE	SPAN 2 & 3 AT PIERS
B3	16	W250x45	6685	100	40	0	0	BOTH	SPAN 4 OTHER THAN PIERS
B4	4	W250x45	6900**	100	40	0	0	ONE	SPAN 4 AT PIERS
B5	8	W200x42	3900	0	0	0	0	BOTH	BETWEEN PIER 4 AND THE NORTH BENT
B6	4	W200x42	3815	100	30	100	30	ONE	BETWEEN NORTH AND SOUTH BENTS
B7	1	W200x42	4730	0	0	0	0	BOTH	ON EXIST. FLOOR BEAM BTWN SOUTH BENTS
B8	4	W200x42	4100**	0	0	0	0	BOTH	SPAN 5 AT PIER 4

** TRIM TO SUIT LENGTH ON SITE



LOCATION APPROVED UNDERGROUND STRUCTURES

SUPR. U/G STRUCTURES DATE COMMITTEE

NOTE: LOCATION OF UNDERGROUND STRUCTURES AS SHOWN ARE BASED ON THE BEST INFORMATION AVAILABLE. BUT NO GUARANTEE IS GIVEN THAT ALL EXISTING UTILITIES ARE SHOWN OR THAT THE GIVEN LOCATIONS ARE EXACT. CONFIRMATION OF EXISTENCE AND EXACT LOCATION OF ALL SERVICES MUST BE OBTAINED FROM THE INDIVIDUAL UTILITIES BEFORE PROCEEDING WITH CONSTRUCTION.



AECOM		This drawing has been prepared for the use of AECOM's client and may not be used, reproduced or relied upon by third parties, except as agreed by AECOM and its client, as required by law or for use by governmental reviewing agencies. AECOM accepts no responsibility, and denies any liability whatsoever, to any party that modifies this drawing without AECOM's express written consent. Do not scale this document. All measurements must be obtained from stated dimensions.	
DESIGNED BY	MK	CHECKED BY	EBL/ARB
DRAWN BY	KC	APPROVED BY	EBL
HOR. SCALE	AS NOTED	RELEASED FOR CONSTRUCTION	
VERT. SCALE	AS NOTED	DATE	

PROFESSIONAL'S SEAL

ORIGINAL SIGNED BY
ANDREW BROMLEY
2011.07.28

CONSULTANT DRAWING NO.
60216082-S-203_RX.dwg

THE CITY OF WINNIPEG PUBLIC WORKS DEPARTMENT

ELM PARK PEDESTRIAN BRIDGE REHABILITATION

DECK DETAILS

CITY DRAWING NUMBER: B131-11-10

SHEET: 06 OF 13

REV: 06

BID OPPORTUNITY NO. 632-2011