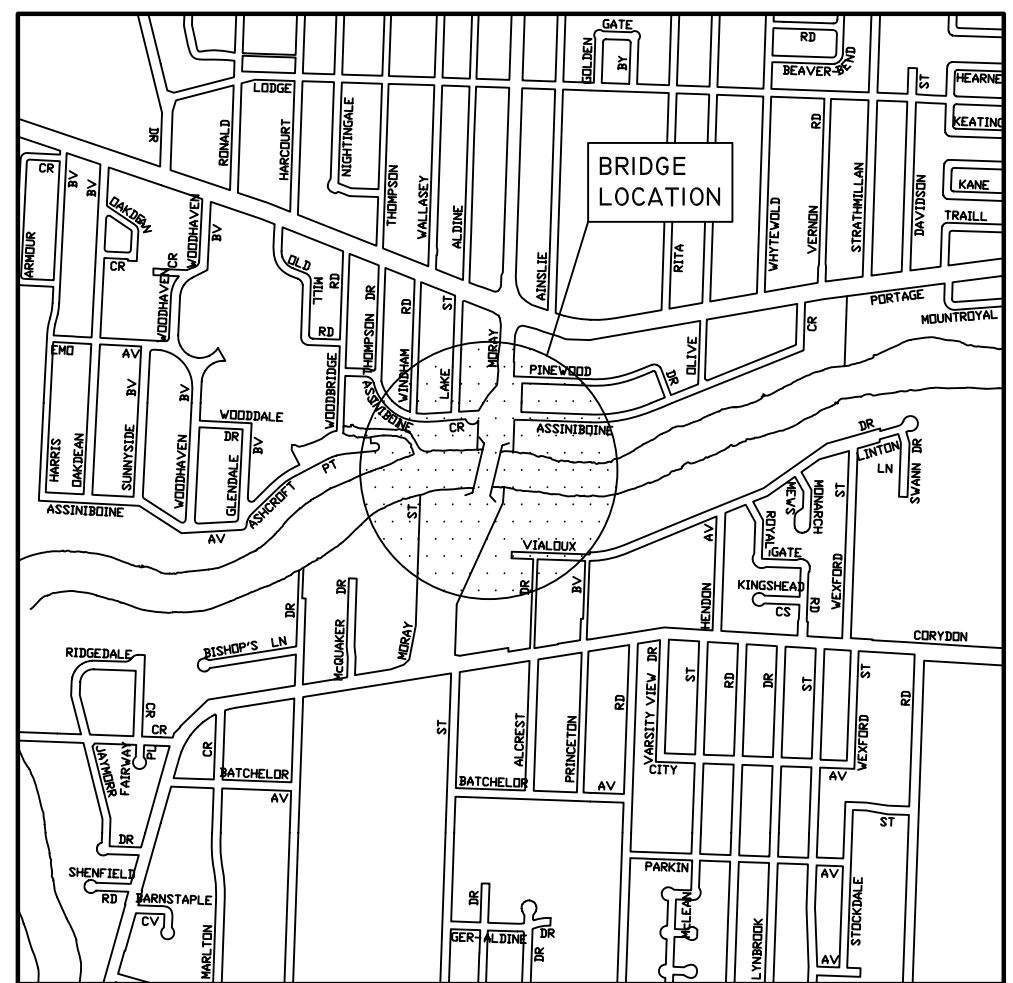
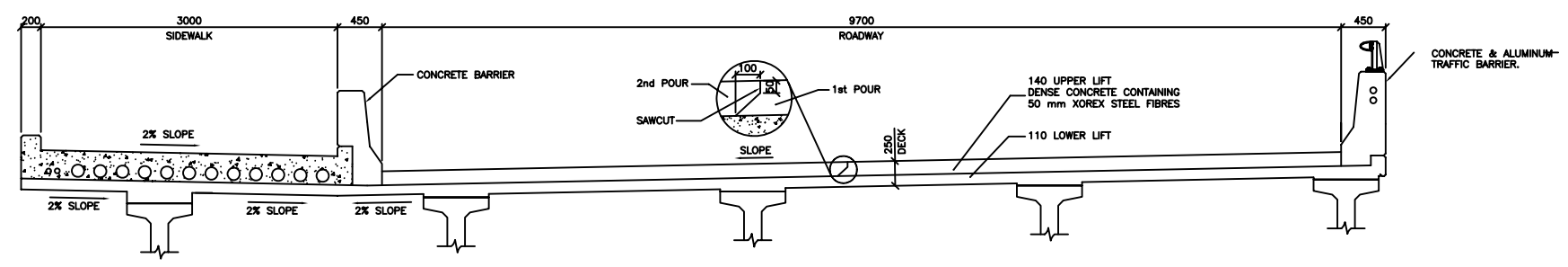


AREA TO APPLY NON-SKID POLYMER WEARING SURFACE ON BRIDGE DECK

DECK LAYOUT
N.T.S.



LOCATION PLAN



TYPICAL CROSS SECTION AT SUPPORT
N.T.S.

- NOTES:**
- APPROXIMATE QUANTITY TO REPLACE = 9 m²
 - ALL MEASUREMENTS TO BE FIELD VERIFIED.

NO.	REVISION	DATE	BY
0	ISSUED FOR TENDER	11/08/02	MRT

DESIGNED BY:	B.A.N.
DRAWN BY:	M.R.T.
CHECKED BY:	B.A.N.
APPROVED BY:	B.A.N.
AUTHORIZED BY:	
ORIGINAL SIGNED BY:	B.A. NEIRINCK
	B.A. NEIRINCK BRIDGE PLANNING & OPERATIONS ENGINEER

ENGINEER'S SEAL

BID OPPORTUNITY NO.:
651-2011

METRIC
WHOLE NUMBERS INDICATE MILLIMETRES
DECIMALIZED NUMBERS INDICATE METRES

CITY OF WINNIPEG
PUBLIC WORKS DEPARTMENT
ENGINEERING DIVISION

MISCELLANEOUS DECK SEALING & CONCRETE REPAIRS

CHARLESWOOD BRIDGE
PLAN & SECTION

SHEET 1 OF 1
HORIZONTAL: N.T.S.
VERTICAL: N.T.S.
CITY DRAWING NUMBER:
B225-11-01